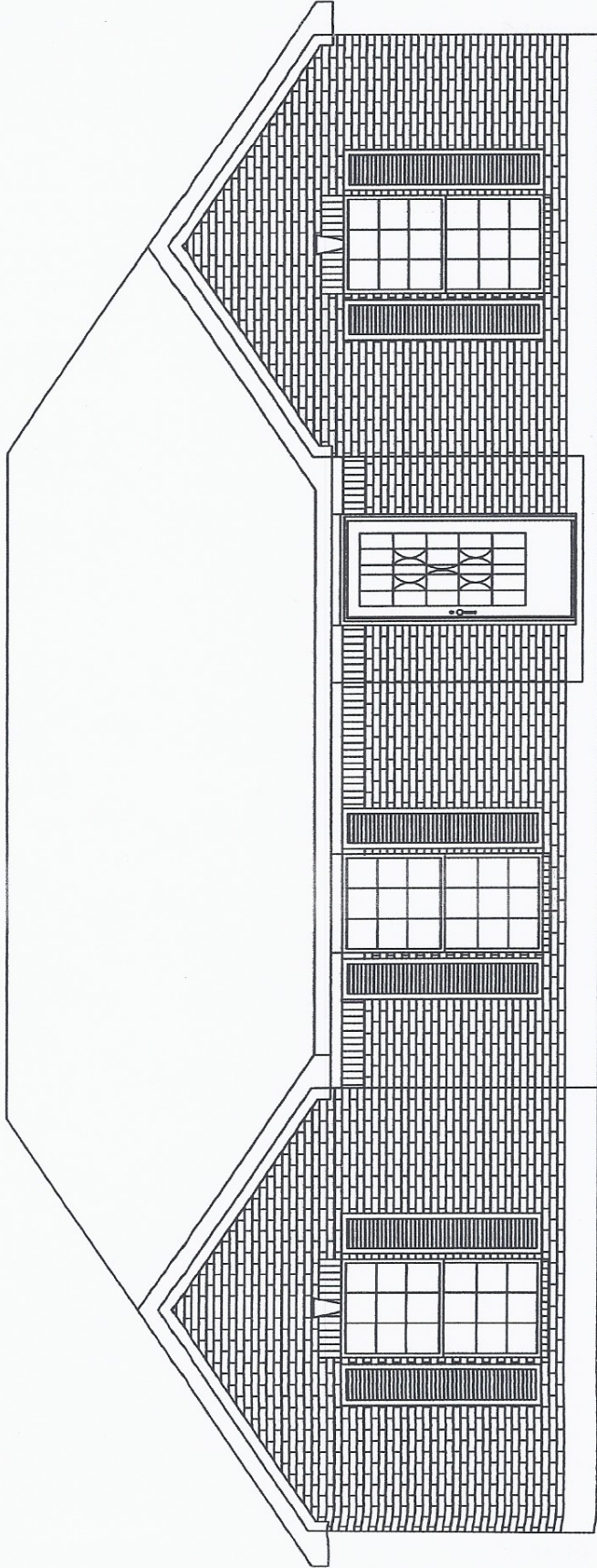
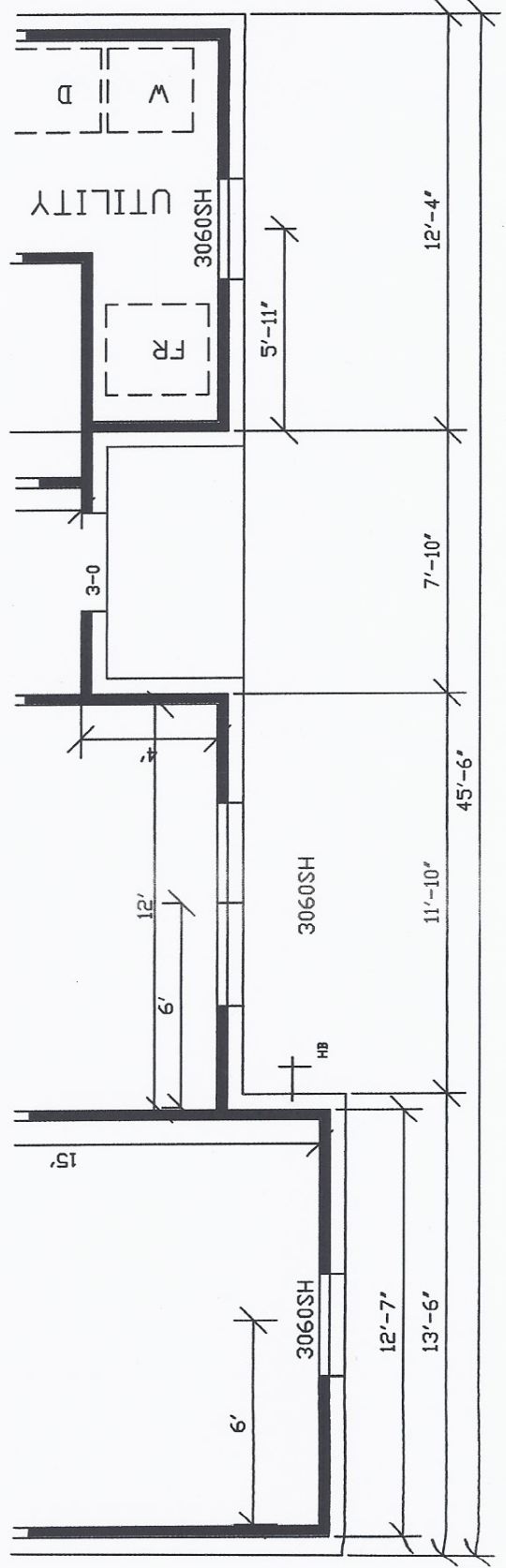


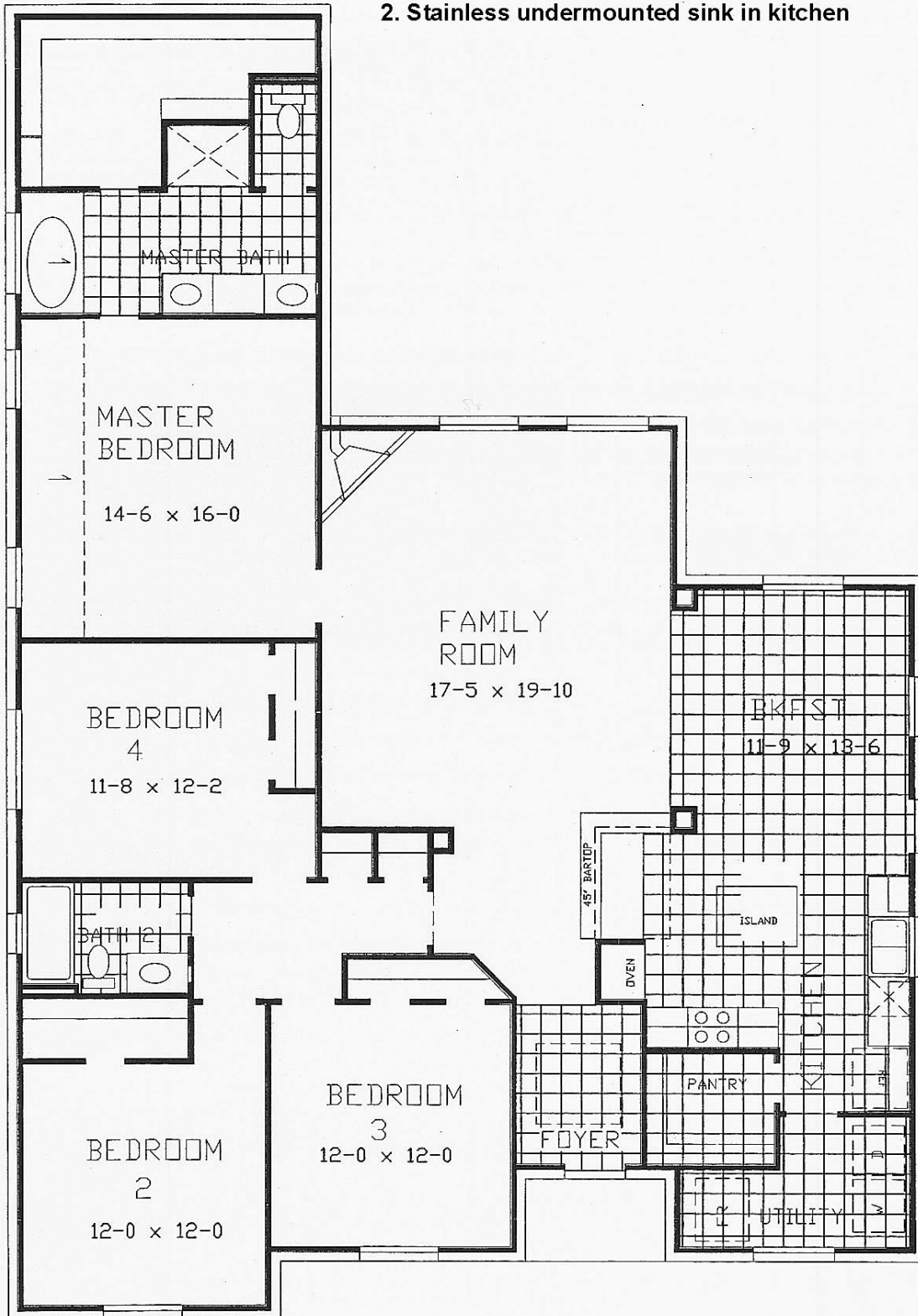
Diagram 1 - 7127 Limestone Circle Manvel, TX 77578



317 PLAN "J"



1. 42" Radisson Pecan cabinets in kitchen
2. Stainless undermounted sink in kitchen

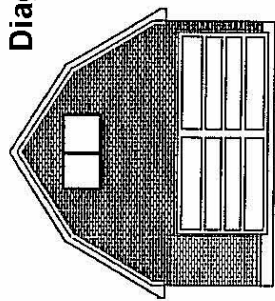


417 PLAN
2170 SQ. FT.

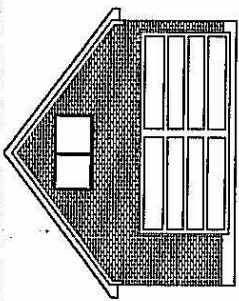
Garage Examples

GDEMO 12-1-16

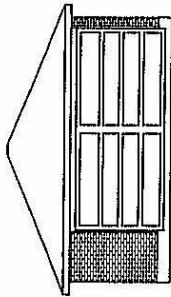
Diagram 3 - 7127 Limestone Circle Manvel, TX 77578 - 4BSFPC w/rear 8'x7' o/h door PLUMBING: Add sewer, hot & cold water stubouts



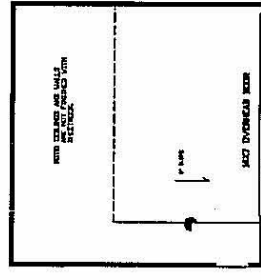
FRONT VIEW- 2 1/2 L AND 4 CAR GARAGE WITH BARN STORAGE BRICKED GABLE



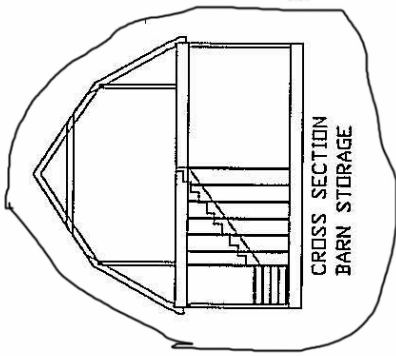
FRONT VIEW- 2 1/2 L AND 4 CAR GARAGE WITH STORAGE LOFT BRICKED GABLE



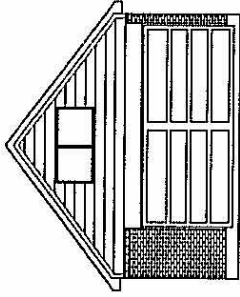
FRONT VIEW- 2 CAR GARAGE



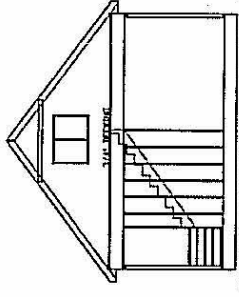
STORAGE LOFT N/A
FIXED STAIRS N/A
BRICKED GABLE FRONT N/A
8X7 REAR GARAGE DOOR \$500
BARN STORAGE LOFT N/A
-20'X20' PORTE CUSHIER \$5000
STORAGE OVER PORTE CUSHIER N/A



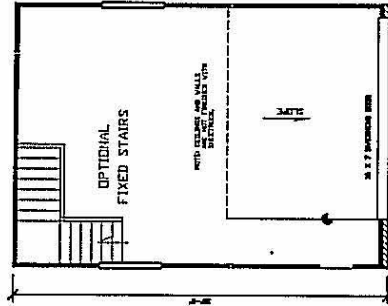
CROSS SECTION BARN STORAGE



FRONT VIEW- 2 1/2 L AND 4 CAR WITH STORAGE LOFT



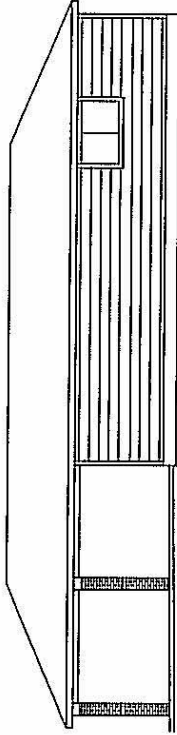
CROSS SECTION- STORAGE LOFT



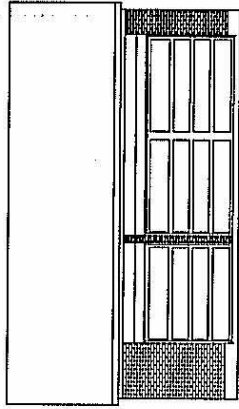
2 1/2 CAR "L" GARAGE (2530)

\$4500

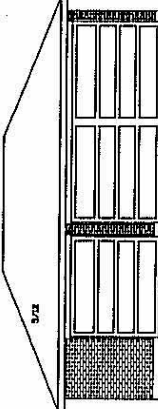
STORAGE LOFT \$3500
FIXED STAIRS \$500
BRICKED GABLE FRONT \$800
8X7 REAR GARAGE DOOR \$500
BARN STORAGE LOFT \$5500
-20'X20' PORTE CUSHIER \$5000
STORAGE OVER PORTE CUSHIER \$3500



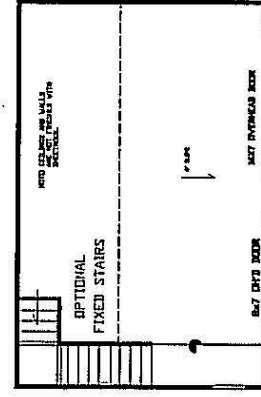
RIGHT SIDE VIEW OF 4 CAR GARAGE WITH PORTE CUSHIER



FRONT VIEW- 3 CAR GARAGE WITH STORAGE LOFT



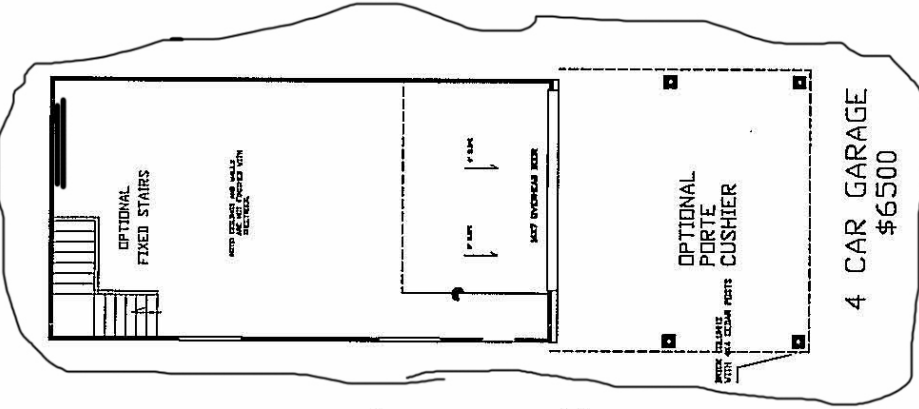
FRONT VIEW- 3 CAR GARAGE



3 CAR GARAGE

\$4500

STORAGE LOFT \$4000
FIXED STAIRS \$500
BRICKED GABLE FRONT \$500
8X7 REAR GARAGE DOOR \$500
BARN STORAGE LOFT \$5500
-20'X20' PORTE CUSHIER \$5000
-30'X20' PORTE CUSHIER \$6500



4 CAR GARAGE

\$6500

STORAGE LOFT \$5000
FIXED STAIRS \$500
BRICKED GABLE FRONT \$800
8X7 REAR GARAGE DOOR \$500
BARN STORAGE LOFT \$7000
-20'X20' PORTE CUSHIER \$5000
STORAGE OVER PORTE CUSHIER \$3500

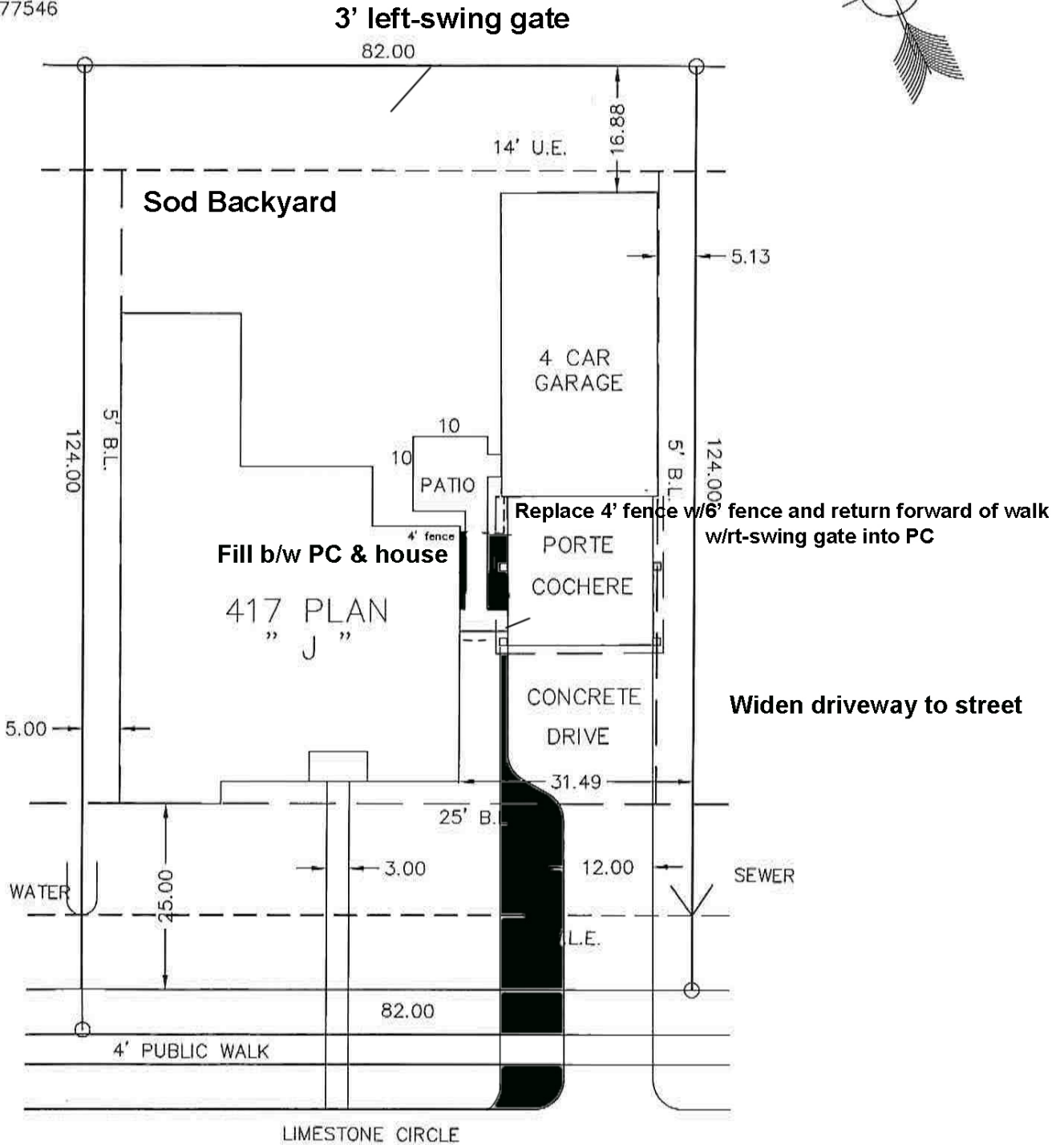
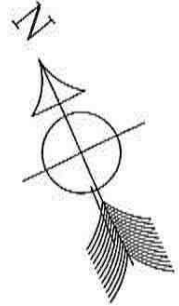
Diagram 4

MODIFIED 12-3-19

CERVELLE GH HOMES

207 E. EDGEWOOD
FRIENDSWOOD, TEXAS
77546

LOT AREA = 10,168 SQ.FT.
SCALE: 1" = 20'



7127 LIMESTONE CIRCLE
LOT 37 BLOCK 5 SECTION 5
LAKELAND