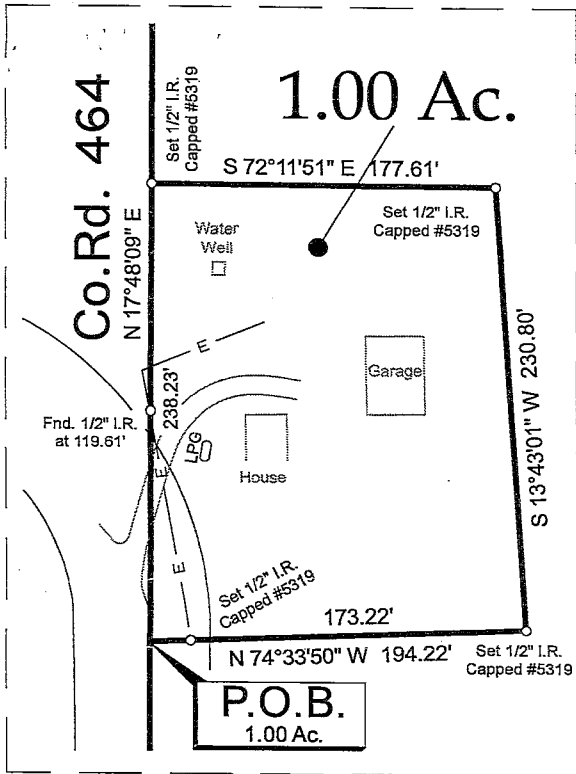


copy
call 242.69 Ac.
W. D. McMillan
226/69; O.R.



Detail
Scale: 1" = 100'

70 Ft. R.O.W. Esmt.
Wharton Co.
535/380; D.R.

See Detail

Scale: 1" = 100'

Co. Rd. No. 464

Fnd. 1/2" I.R.
at 2.91'

P.O.B.
58.48 Ac.

call 77 Ac.
A.F. Wuthrich
211/424; D.R.

58.55 Ac.

call 59.46 Ac.
(Fred Wuthrich)
(64/313; D.R.)

N 17°48'09" E 2814.35'

1171.41'

Set 1/2" I.R.
Capped #5319
at 884.48'

N 72°28'04" W 921.85'

Private Rd.

call 20 Ac.
Nancy Denton
573/99; O.R.

Fnd. 5/8" I.R.
Capped #5319

call 19.9768 Ac. Tract No. 2
Paul J. Taylor, etux
728/490; D.R.

call 8.1767 Ac. Tract No. 1
C.E. Balthrop, etux
728/490; D.R.

call 90.0 Ac.
Russell H. Talty, etux
539/260; D.R.

call 58.78 Ac.
C.E. Balthrop, etal
769/665; D.R.
C.E. Balthrop, etal
840/350; D.R.

FIRST TRACT
call 4.217 Ac.
Russell H. Talty, etux
539/267; D.R.

SECOND TRACT
call 33.783 Ac.
Russell H. Talty, etux
539/267; D.R.

call 33.584 Ac.
C.E. Balthrop
824/718; D.R.
C.E. Balthrop
396/241; O.R.
Alex John Wied III
665/810; O.R.

call 16.257 Ac.
C.E. Balthrop, etal
266/168; O.R.

20 Ft. Roadway
67/64; D.R.

Fnd. 1/2" I.R.
at 825.63'

"30 Ft. wide strip reserved for roadway"
769/665; D.R.

Corner Post

S 72°23'36" E 922.00'

1404.70'

N 17°48'09" E 2814.35'

1171.41'

Set 1/2" I.R.
Capped #5319
at 884.48'

Set 1/2" I.R.
Capped #5319

1404.70'

N 17°48'09" E 2814.35'

1171.41'

Set 1/2" I.R.
Capped #5319
at 884.48'

Set 1/2" I.R.
Capped #5319

1404.70'

N 17°48'09" E 2814.35'

1171.41'

Set 1/2" I.R.
Capped #5319
at 884.48'

Set 1/2" I.R.
Capped #5319

1404.70'

N 17°48'09" E 2814.35'

1171.41'

Set 1/2" I.R.
Capped #5319
at 884.48'

Set 1/2" I.R.
Capped #5319

1404.70'

N 17°48'09" E 2814.35'

1171.41'

Set 1/2" I.R.
Capped #5319
at 884.48'

Set 1/2" I.R.
Capped #5319

1404.70'

N 17°48'09" E 2814.35'

1171.41'

Set 1/2" I.R.
Capped #5319
at 884.48'

Set 1/2" I.R.
Capped #5319

1404.70'

N 17°48'09" E 2814.35'

1171.41'

Set 1/2" I.R.
Capped #5319
at 884.48'

Set 1/2" I.R.
Capped #5319

1404.70'

N 17°48'09" E 2814.35'

1171.41'

Set 1/2" I.R.
Capped #5319
at 884.48'

Set 1/2" I.R.
Capped #5319

1404.70'

N 17°48'09" E 2814.35'

1171.41'

Set 1/2" I.R.
Capped #5319
at 884.48'

Set 1/2" I.R.
Capped #5319

1404.70'

N 17°48'09" E 2814.35'

1171.41'

Set 1/2" I.R.
Capped #5319
at 884.48'

Set 1/2" I.R.
Capped #5319

1404.70'

N 17°48'09" E 2814.35'

1171.41'

Set 1/2" I.R.
Capped #5319
at 884.48'

Set 1/2" I.R.
Capped #5319

1404.70'

N 17°48'09" E 2814.35'

1171.41'

Set 1/2" I.R.
Capped #5319
at 884.48'

Set 1/2" I.R.
Capped #5319

1404.70'

N 17°48'09" E 2814.35'

1171.41'

Set 1/2" I.R.
Capped #5319
at 884.48'

Set 1/2" I.R.
Capped #5319

1404.70'

N 17°48'09" E 2814.35'

1171.41'

Set 1/2" I.R.
Capped #5319
at 884.48'

Set 1/2" I.R.
Capped #5319

1404.70'

N 17°48'09" E 2814.35'

1171.41'

Set 1/2" I.R.
Capped #5319
at 884.48'

Set 1/2" I.R.
Capped #5319

1404.70'

N 17°48'09" E 2814.35'

1171.41'

Set 1/2" I.R.
Capped #5319
at 884.48'

Set 1/2" I.R.
Capped #5319

1404.70'

N 17°48'09" E 2814.35'

1171.41'

Set 1/2" I.R.
Capped #5319
at 884.48'

Set 1/2" I.R.
Capped #5319

1404.70'

N 17°48'09" E 2814.35'

1171.41'

Set 1/2" I.R.
Capped #5319
at 884.48'

Set 1/2" I.R.
Capped #5319

1404.70'

N 17°48'09" E 2814.35'

1171.41'

Set 1/2" I.R.
Capped #5319
at 884.48'

Set 1/2" I.R.
Capped #5319

1404.70'

N 17°48'09" E 2814.35'

1171.41'

Set 1/2" I.R.
Capped #5319
at 884.48'

Set 1/2" I.R.
Capped #5319

1404.70'

N 17°48'09" E 2814.35'

1171.41'

Set 1/2" I.R.
Capped #5319
at 884.48'

Set 1/2" I.R.
Capped #5319

1404.70'

N 17°48'09" E 2814.35'

1171.41'

Set 1/2" I.R.
Capped #5319
at 884.48'

Set 1/2" I.R.
Capped #5319

1404.70'

N 17°48'09" E 2814.35'

1171.41'

Set 1/2" I.R.
Capped #5319
at 884.48'

Set 1/2" I.R.
Capped #5319

1404.70'

N 17°48'09" E 2814.35'

1171.41'

Set 1/2" I.R.
Capped #5319
at 884.48'

Set 1/2" I.R.
Capped #5319

1404.70'

N 17°48'09" E 2814.35'

1171.41'

Set 1/2" I.R.
Capped #5319
at 884.48'

Set 1/2" I.R.
Capped #5319

1404.70'

N 17°48'09" E 2814.35'

1171.41'

Set 1/2" I.R.
Capped #5319
at 884.48'

Set 1/2" I.R.
Capped #5319

1404.70'

N 17°48'09" E 2814.35'

1171.41'

Set 1/2" I.R.
Capped #5319
at 884.48'

Set 1/2" I.R.
Capped #5319

1404.70'

N 17°48'09" E 2814.35'

1171.41'

Set 1/2" I.R.
Capped #5319
at 884.48'

Set 1/2" I.R.
Capped #5319

1404.70'

N 17°48'09" E 2814.35'

1171.41'

Set 1/2" I.R.
Capped #5319
at 884.48'

Set 1/2" I.R.
Capped #5319

1404.70'

N 17°48'09" E 2814.35'

1171.41'

Set 1/2" I.R.
Capped #5319
at 884.48'

Set 1/2" I.R.
Capped #5319

1404.70'

N 17°48'09" E 2814.35'

1171.41'

Set 1/2" I.R.
Capped #5319
at 884.48'

Set 1/2" I.R.
Capped #5319

1404.70'

N 17°48'09" E 2814.35'

1171.41'

Set 1/2" I.R.
Capped #5319
at 884.48'

Set 1/2" I.R.
Capped #5319

1404.70'

N 17°48'09" E 2814.35'

1171.41'

Set 1/2" I.R.
Capped #5319
at 884.48'

Set 1/2" I.R.
Capped #5319

1404.70'

N 17°48'09" E 2814.35'

1171.41'

Set 1/2" I.R.
Capped #5319
at 884.48'

Set 1/2" I.R.
Capped #5319

1404.70'

N 17°48'09" E 2814.35'

1171.41'

Set 1/2" I.R.
Capped #5319
at 884.48'

Set 1/2" I.R.
Capped #5319

1404.70'

N 17°48'09" E 2814.35'

1171.41'

Set 1/2" I.R.
Capped #5319
at 884.48'

Set 1/2" I.R.
Capped #5319

1404.70'

N 17°48'09" E 2814.35'

1171.41'

Set 1/2" I.R.
Capped #5319
at 884.48'

Set 1/2" I.R.
Capped #5319

1404.70'

N 17°48'09" E 2814.35'

1171.41'

Set 1/2" I.R.
Capped #5319
at 884.48'

Set 1/2" I.R.
Capped #5319

1404.70'

N 17°48'09" E 2814.35'

1171.41'

Set 1/2" I.R.
Capped #5319
at 884.48'

Set 1/2" I.R.
Capped #5319

1404.70'

N 17°48'09" E 2814.35'

1171.41'

Set 1/2" I.R.
Capped #5319
at 884.48'

Set 1/2" I.R.
Capped #5319

1404.70'

N 17°48'09" E 2814.35'

1171.41'

Set 1/2" I.R.
Capped #5319
at 884.48'

Set 1/2" I.R.
Capped #5319

1404.70'

N 17°48'09" E 2814.35'

1171.41'

Set 1/2" I.R.
Capped #5319
at 884.48'

Set 1/2" I.R.
Capped #5319

1404.70'

N 17°48'09" E 2814.35'