

GAS METER POWER POLE POWER LINE 5% SLOPE
 SANITARY MANHOLE TREE WITH SIZE CONCRETE COVERED POSITIVE FLOW

BL = BUILDING LINE HBD = HIGH BANK DITCH PP = POWER POLE
 CLD = CENTER LINE DITCH R = RADIUS SAN MH = SANITARY SEWER MANHOLE
 FL = FLOW LINE R.C.P. = REINFORCED CONCRETE PIPE UE = UTILITY EASEMENT

LEGEND

COMMON ABBREVIATIONS

CALLED LOT 5
 TO QUEENS DRIVE INC.
 C.F. NO. RP-2018-526174



SCALE: 1"=20'

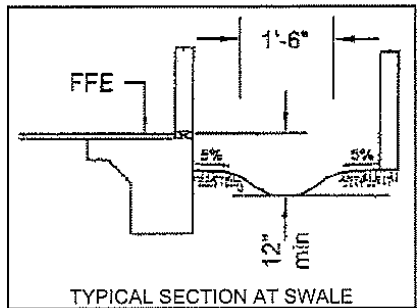


LOT COVERAGE

| | |
|----------------|-------------|
| SLAB= | 2003 SQ.FT. |
| COVERED PORCH= | 30 SQ.FT. |
| COVERED PATIO= | 65 SQ.FT. |
| PRIVATE WALK= | 24 SQ.FT. |
| DRIVEWAY= | 367 SQ.FT. |
| TOTAL= | 2489 SQ.FT. |
| LOT= | 5512 SQ.FT. |
| COVERAGE= | 45 % |

FINISH FLOOR CALCULATIONS

- $12" + 45.07 + (36.4' \times 0.02) = 46.80$
- 12" ABOVE RIM ELEVATION OF NEAREST SANITARY MANHOLE = 45.30
- 4" ABOVE CROWN OF STREET = 45.88



ELEVATION INFORMATION

ALL ELEVATIONS SHOWN HEREON ARE BASED ON N.A.V.D. 1988, 2001 ADJUSTMENT

BM:
H.C.F.C.D. RM # 44.55
ELEV=50.45' N.A.V.D. 1988, 2001 ADJUSTMENT

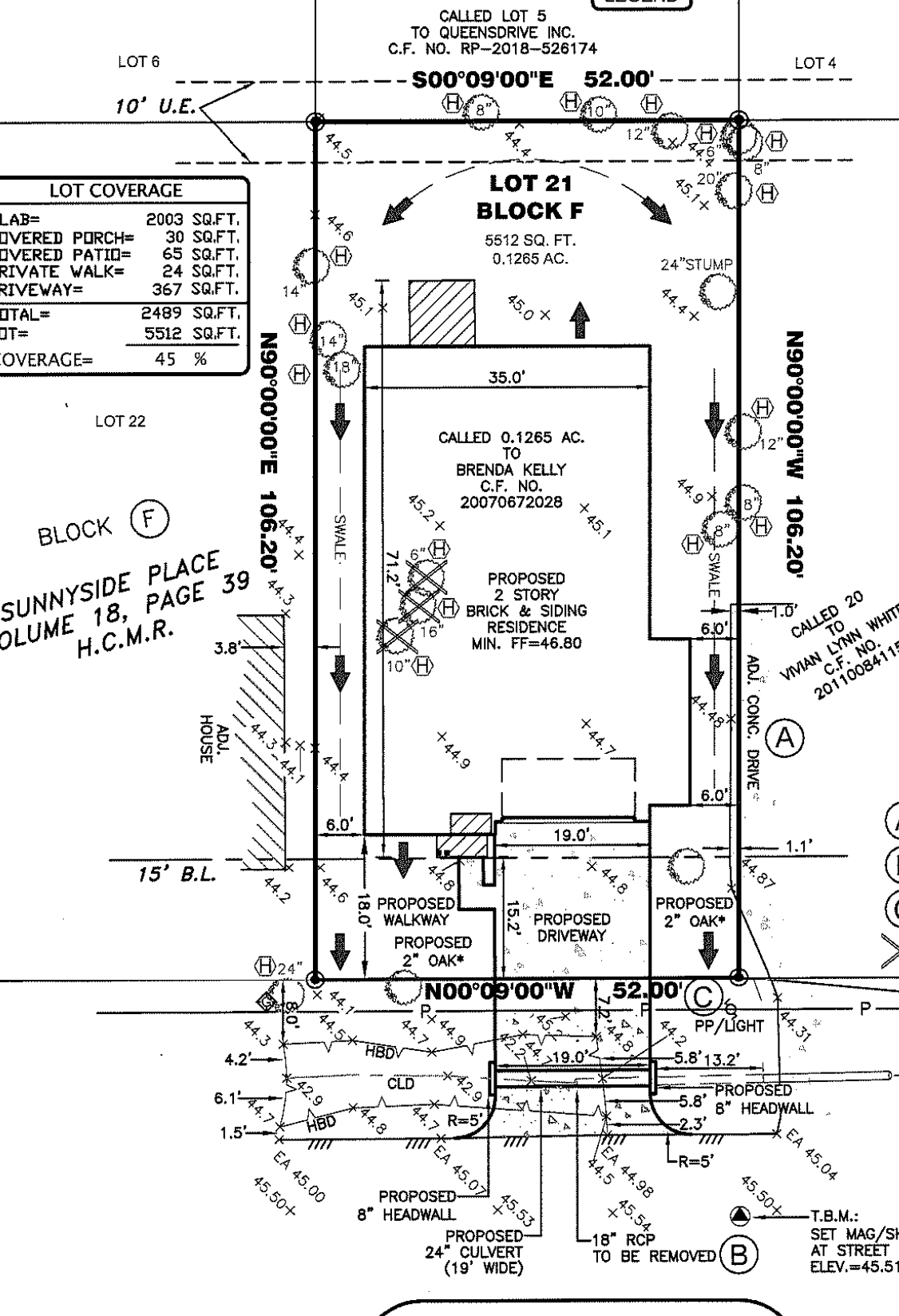
TBM:
SET MAG/SHINER ON STREET AT EAST SIDE OF SUBJECT PROPERTY ALONG GRANDVIEW STREET
ELEV=45.51' N.A.V.D. 1988, 2001 ADJUSTMENT

- (A) ADJ. CONC. DRIVE PROTRUDES OVER P.L. AS SHOWN.
- (B) 23± OF EXISTING 18" R.C.P. TO BE REMOVED (SEE NOTE 14)
- (C) NO EXISTING DRIVEWAY AT TIME OF SURVEY
- X = 3 TREES TO BE REMOVED

TREE SURVEY KEY:

| | |
|-----|----------|
| (H) | HARDWOOD |
| (S) | SOFTWOOD |

TREES SPECIES (IF SHOWN) WERE IDENTIFIED BY A SURVEY CREW AT THE TIME OF SURVEY TO THE BEST OF OUR ABILITIES. A CERTIFIED ARBORIST SHOULD BE CONSULTED FOR FINAL DETERMINATION AND VERIFICATION OF SPECIES.
* SPECIMEN TREE AS SPECIFIED



8218 GRANDVIEW STREET