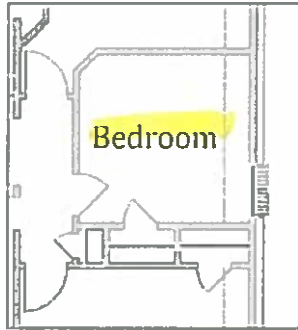
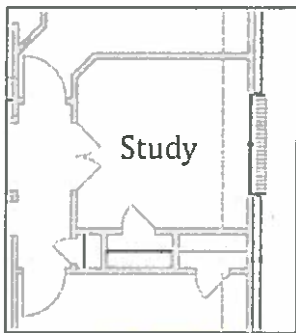




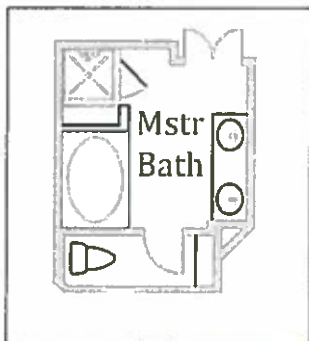
The Nolan • Plan # 507 • 2,004 Sq Ft.



Optional Bedroom

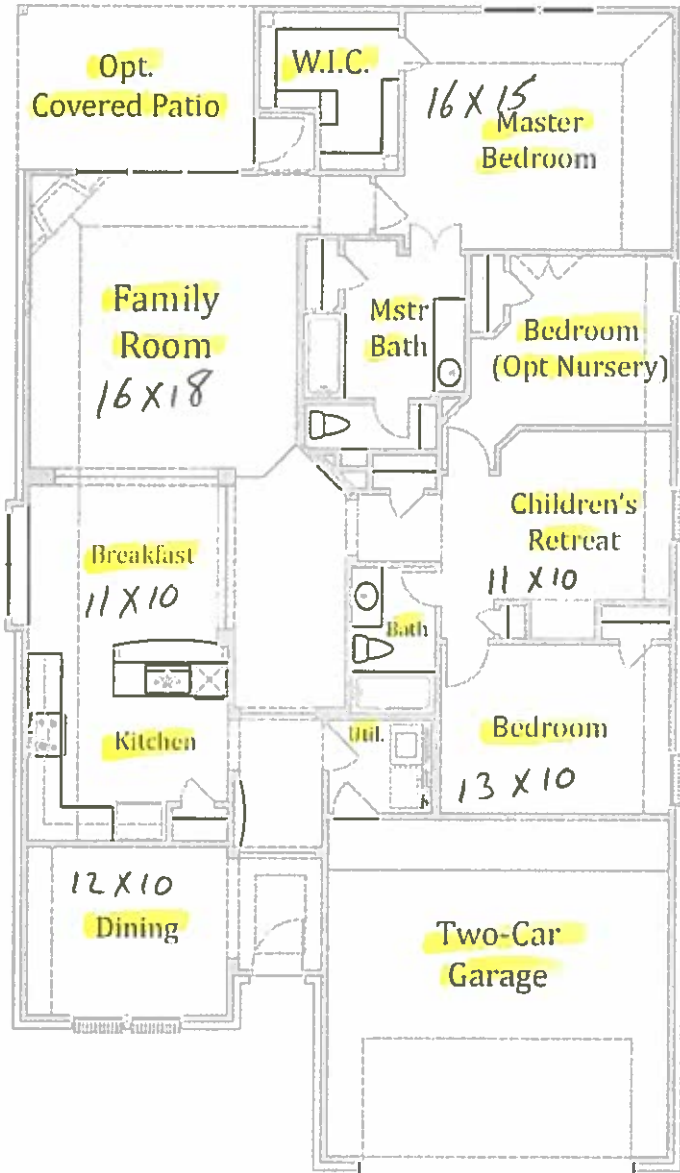


Optional Study



Optional Master Bath

Floor Plan



All square footage is approximate. WG Homes reserves the right to change specifications and designs without notice. Prices, plans, and availability are subject to change without notice.

package Brushed Nickel
Standard

DESIGN FEATURES

Exterior Construction Features

- ❖ Kiln Fired, Hand-Laid Clay Brick
- ❖ High Quality 20 year Composition Shingles
- ❖ Fiber-Cementious Lap Siding
- ❖ Energy Efficient, Divided Light Front Windows
- ❖ Coach Light Installed Near Garage Door
- ❖ Landscape Design Package with Fully Sodded Front Lawn
- ❖ Oak Tree with 1 1/2" Caliper Trunk
- ❖ Inlaid Cast Stone Address Plaque
- ❖ Alterna 6-Panel Insulated Front Door
- ❖ Alterna 1/2-Lite, Insulated Rear Door
- ❖ Stainless Steel Finish Door Hardware, Including Deadbolts on All Exterior Doors
- ❖ Durable Steel Garage Doors
- ❖ 3-Exterior Faucets with Anti-Siphoning Devices
- ❖ 6 ft. Fence with 3 ft. Access Gate
- ❖ Screens on All Operable Windows
- ❖ Two-Tone Exterior Paint

PM ✓

Distinct Kitchen Features

- ❖ Oak Finished Cabinetry
- ❖ GE White Appliance Package Including: Energy Efficient Gas Range, Dishwasher, & Vent Hood
- ❖ Moen Chrome Finish Faucet with Vegetable Sprayer
- ❖ Wilsonart Countertops & Backsplash
- ❖ Durable Stainless Steel Sink
- ❖ Heavy Duty Garbage Disposal
- ❖ Ice Maker Connection
- ❖ Ceramic Tile Flooring in Kitchen, Breakfast Area, & Utility Room

Notable Owner's Suite Features

- ❖ Privacy Door Lock
- ❖ Vaulted Ceilings (per design)
- ❖ Ceiling Fan
- ❖ Cultured Marble Vanity Top
- ❖ Separate Tub and Shower with Dramatic 12" Ceramic Tile Surround
- ❖ Moen Chrome Finish Faucets
- ❖ Chrome Finish Towel Bar & Paper Holder
- ❖ Ceramic Tile Flooring in Master Bath Areas (per design)

Secondary Baths Features

- ❖ Porcelain Coated Steel Tub with Dramatic 12" Ceramic Tile Surround
- ❖ Pedestal Sink with a Designer Mirror in Half Bath (per design)
- ❖ Cultured Marble Vanity Top
- ❖ Moen Chrome Finish Faucets
- ❖ Chrome Finish Towel Bar & Paper Holder
- ❖ Ceramic Tile Flooring

Interior Design Features

- ❖ Integral Smoke Detectors Throughout Home Including All Bedrooms
- ❖ Rounded Sheetrock Corners (per design)
- ❖ Choice of Plush Carpet with 3/8" Quality Pad
- ❖ Ceramic Tile Entry Floor
- ❖ Raised 6-Panel Interior Doors
- ❖ Ceiling Fan in Family Room
- ❖ Secondary Bedrooms Blocked & Wired for Ceiling Fan
- ❖ 2-Pre-Wired Telephone Jacks
- ❖ 2-Pre-Wired Cable Outlets
- ❖ Electric Dryer Connection in Utility Room
- ❖ Sheetrock Finished Garage

Green Environments® Energy Efficiency Standards

- ❖ Efficient 14 SEER Air Conditioning System
- ❖ Energy Efficient Double Pane, Insulated Windows
- ❖ Digital Thermostat
- ❖ R-30 Blown Insulation in Flat Ceiling Areas
- ❖ R-13 Insulation in Walls
- ❖ Poly-foam Sealant Around All Air Infiltration Points
- ❖ Ridge Ventilated Attic with Continuous Perforated Soffit
- ❖ High Efficiency Gas Water Heater & Furnace
- ❖ Taexx Built-In Pest Control System
- ❖ TechShield Radiant Barrier Decking

Outstanding Construction Standards

- ❖ Termite Pretreatment
- ❖ Third-Party Inspections at Three Different Stages
- ❖ Individually Inspected & Engineered Post Tension Foundation
- ❖ Glued, Nailed & Screwed-Down Tongue & Groove Sub-Flooring (per design)
- ❖ Pex Plumbing System
- ❖ Insulated Plumbing on Exterior Walls
- ❖ Copper Electrical Interior Wiring
- ❖ Customer Focused Pre-Construction Walk, Pre-Cover Walk, & New Home Orientation

Quality Customer Care and Warranty Program

- ❖ 10-Year Limited Structural Homebuyer's Protection Warranty
- ❖ 2-Year Limited Plumbing, Electrical, & HVAC Warranty
- ❖ 1-Year Workmanship/Material Defects Warranty
- ❖ Manufacturer's Limited Warranties: Lifetime on Moen Plumbing Fixtures, 50-Year Fiber Cement Siding, 25-Year Soffits, 20-Year Shingles, 15-Year Flowguard System, 10-Year Trim & Fascia