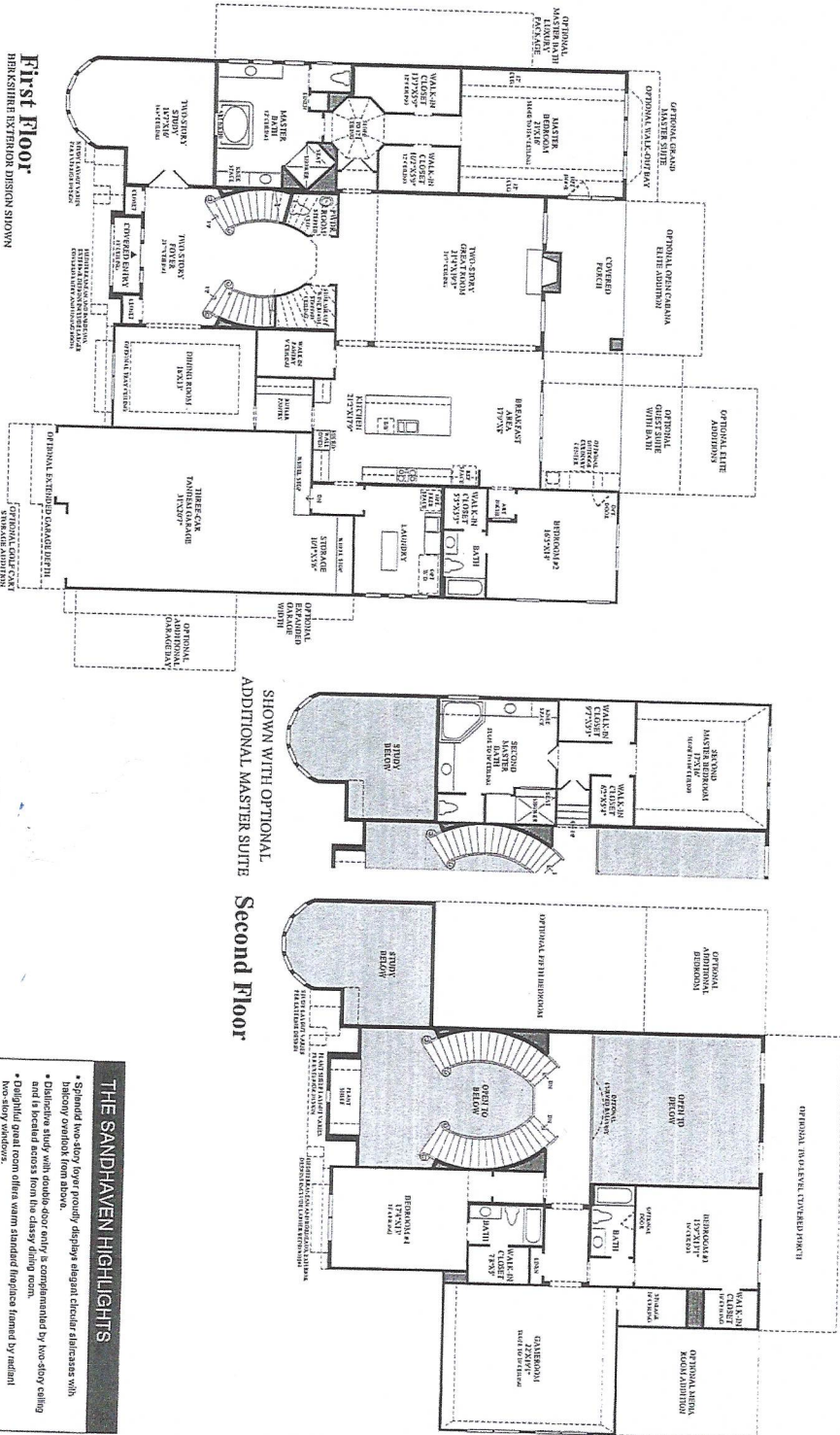


THE SANDHAVEN | Floor Plan

4 to 6 Bedrooms | 4 1/2 to 6 1/4 Baths | 3- to 4-Car Garage

Toll Brothers
America's Luxury Home Builder
tollbrothers.com



THE SANDHAVEN HIGHLIGHTS

- Spacious two-story foyer proudly displays elegant circular staircase with balcony overlook from above.
- Distinctive study with double-door entry is complemented by two-story ceiling and a beamed recess from the classy dining room.
- Delightful great room offers warm standard fireplace framed by radiant two-story windows.
- Kitchen is complete with large center island, enormous walk-in pantry, opening butter pantry, and easy access to sunlit breakfast area.
- Generous master bedroom is enriched with a unique sloped ceiling, shower, and dual vanities.
- Also includes a luxurious second-floor bedroom and oversized three-car tandem garage.

© 2014 Toll Brothers Inc. All rights reserved. This floor plan is a conceptual drawing and does not represent an actual building. Dimensions and room names are approximate. Actual dimensions and room names may vary. See actual floor plan for details. All other trademarks and registered trademarks are the property of their respective owners.