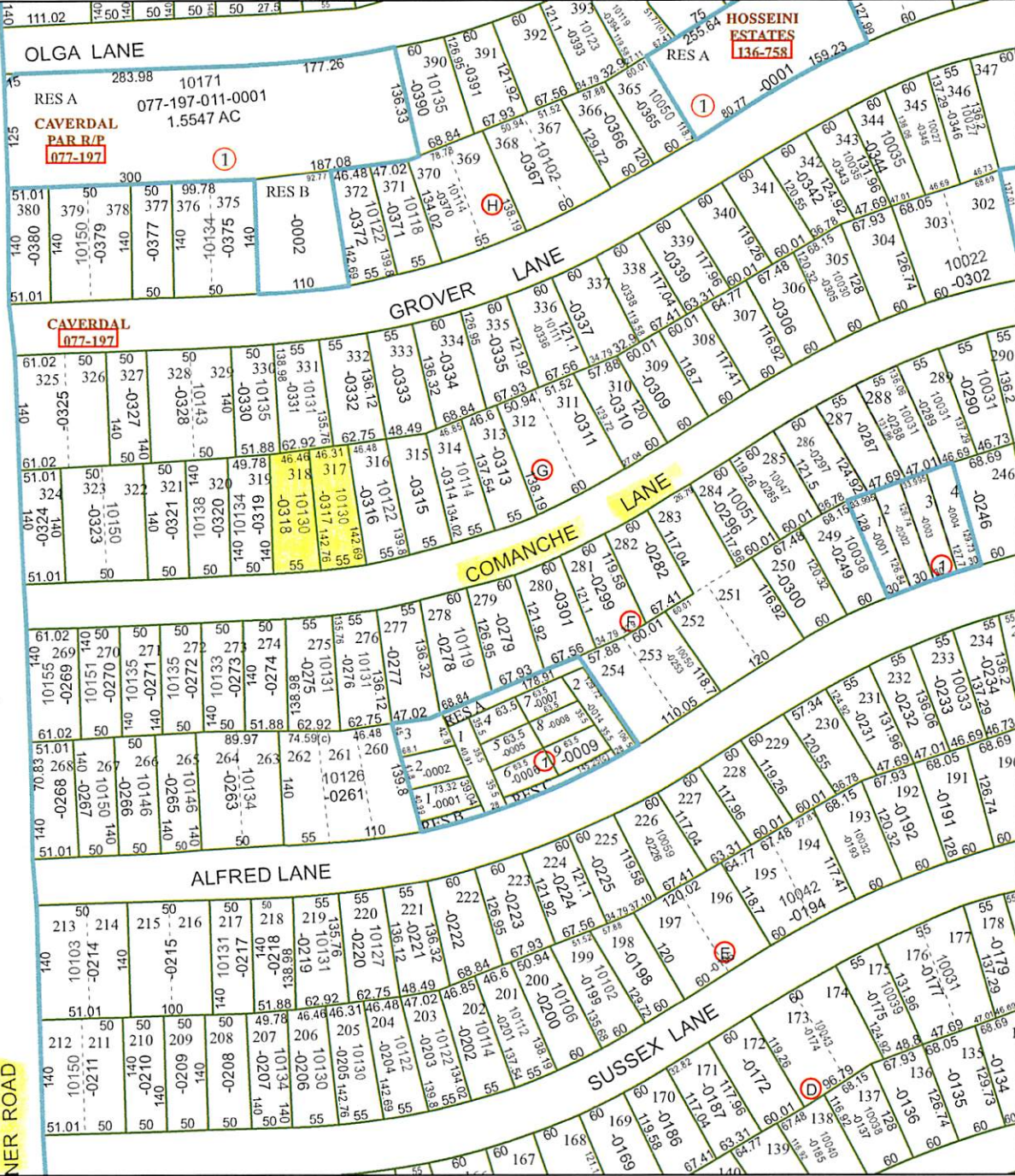


4961B10



4961D6

# Harris County Appraisal District



0 50 100 200 Feet

PUBLICATION DATE:  
3/10/2020

Geospatial or map data maintained by the Harris County Appraisal District is for informational purposes and may not have been prepared for or be suitable for legal, engineering, or surveying purposes. It does not represent an on-the-ground survey and only represents the approximate location of property boundaries.

MAP LOCATION



## FACET 4961D2

12	9	10	11	12
4	1	2	3	4
8	5	6	7	8

4961D1

GESSNER PARK PLAZA  
118-593

RES A

26298.7

4961D3

