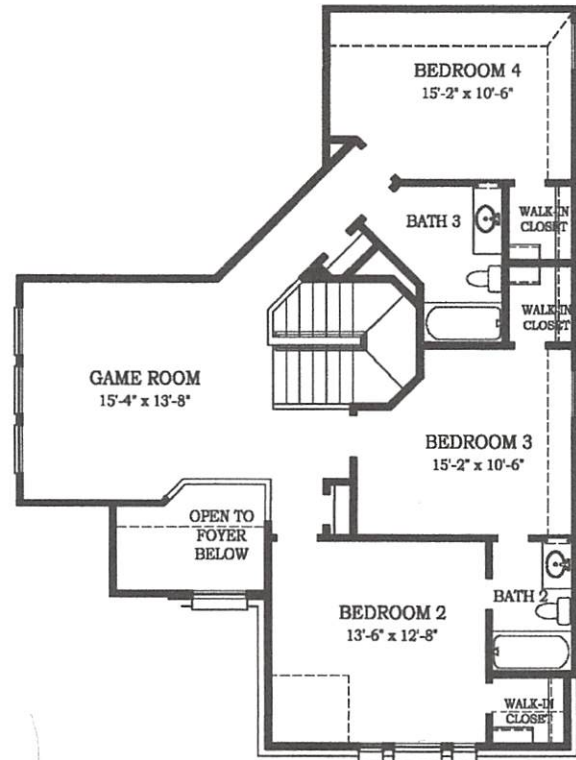
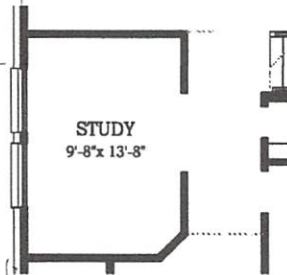


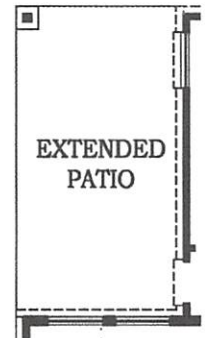
1st Floor Plan



2nd Floor Plan



OPTIONAL STUDY AT DINING ROOM.



OPTIONAL EXTENDED REAR PATIO

Square footage and room dimensions are approximate and may vary per elevation. Window placement, roof line and porches may also vary by elevation. Plans, features, prices and availability are subject to change without notice.

Print date: 11/13/14





STANDARD FEATURES

The Fortunata Collection

ENERGY SAVINGS AND COMFORT

- EFL Heating and Cooling Energy Use Guarantee (limited)
- EFL Heating and Cooling Energy & Comfort Guarantee (limited)
- High Efficiency 16 SEER HVAC system with Trane condenser and 80% AFUE Trane furnace
- 100% Compact Fluorescent Lamps and meets/exceeds current Energy Star standards
- R-13 wall insulation, living areas (R-15 in windstorm compliance areas)
- R-38 blown-in attic insulation, living areas
- R-22 insulation on sloped ceilings, at top plates per Energy Star specs, living areas
- Foil-backed R-8 A/C ductwork
- Polycel® insulation around windows, doors, bottom plate and other openings
- Double-pane LoE³ beige insulated vinyl windows that tilt-in for easy clean
- Energy efficient Tech Shield® or equivalent radiant barrier roof decking
- 1/2" Dow® R-3 insulated sheathing, except windstorm areas
- Honeywell® programmable thermostat
- High-efficiency gas water heater
- Natural gas cooking

EXTERIOR DETAILS

- 1/2 Lite rear door with integral blind
- Concrete driveways and walks
- Engineered post tension slab
- Fiber Cement exterior siding with 25-year manufacturers limited warranty
- Fiber Cement exterior trim materials with 15-year manufacturers limited warranty
- Full sod in front and back yard, fenced rear yard
- Landscaped front yard to developer requirement
- Large covered front porches and rear patios on most plans
- Mahogany beveled glass front door
- Two exterior faucets
- Wayne-Dalton Sonoma insulated garage doors, with garage door opener and two remote controls
- Weatherproof exterior electrical outlets near front and rear doors

INTERIOR DETAILS

- 1/2"- 5# Rebond carpet pad with standard carpet. Carpeting with a five-year wear limited warranty.
- 2" faux-wood blinds in all windows

- Arched sheetrock openings, per plan
- Camden raised panel interior passage doors
- Delaney distinctive door hardware with satin nickel finish
- Energy Star rated multi-speed ceiling fan with light kit in master bedroom, family room and game room. Blocked and wired for ceiling fans in secondary bedrooms and rear patios, per plan
- Folding stair or door access to attic, per plan
- Interior electrical breaker service panel
- Pre-wired for cable television outlets in family room, game room, study and all bedrooms
- Pre-wired for telephones in kitchen, game room, study and all bedrooms
- Raised ceilings and rounded sheetrock corners
- Satin nickel designer light fixtures
- Security System with motion detector and two key pads
- Smoke and carbon monoxide detectors
- Suspended light fixture in dining room, per plan
- Two-tone decorator color scheme, featuring Moth Gray walls with Shell White trim

KITCHEN DETAILS

- Brandom Cabinetry with 42" high uppers, maple drawers with dove-tail construction, and full extension guides
- Complete GE® black or white appliance package including:
 - Extra-large GE® standard-clean energy efficient gas range
 - Energy Star rated built-in GE® dishwasher
 - Built-in GE® microwave
 - Energy Star top mount 21 cubic foot GE® refrigerator with icemaker
- Delta® Leland chrome faucet
- Granite countertops (choice of two colors standard) with polished square edge. Kitchen countertop overhangs for informal dining, per plan.
- Recessed can lighting
- Stainless steel 50/50 under-mount sink with garbage disposal and tile backsplash
- Tile flooring in kitchen and breakfast area

MASTER BATH DETAILS

- Air conditioned, walk-in closets with fluorescent lighting
- Brandom Cabinetry with 36" high vanity cabinets and matching wooden medicine cabinet
- Broan® quiet ventilation fan
- Delta® chrome faucets and Delta® Kinley bath accessories

CHESMAR.COM

sign Karen K.

date 2-26-17

sign Michael

CHESMAR HOMES
Setting a Higher Standard
date 2/26/17