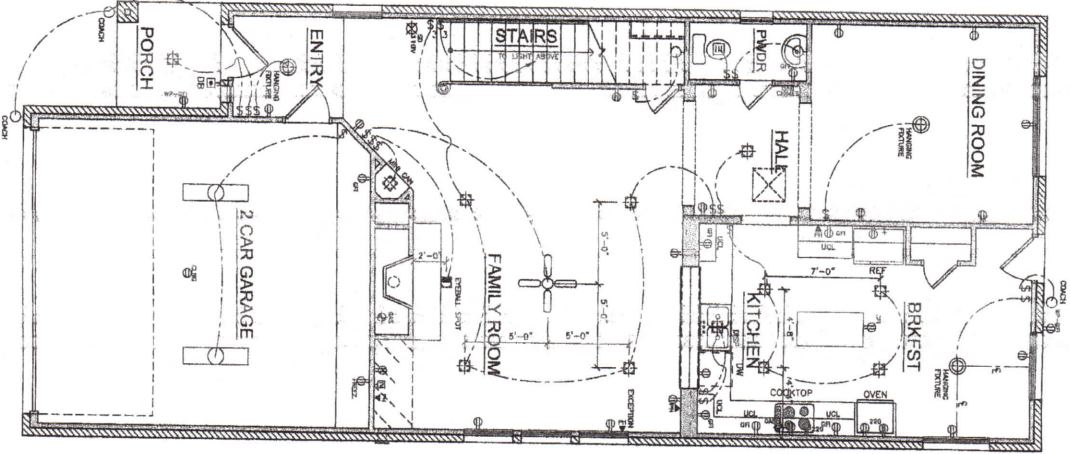
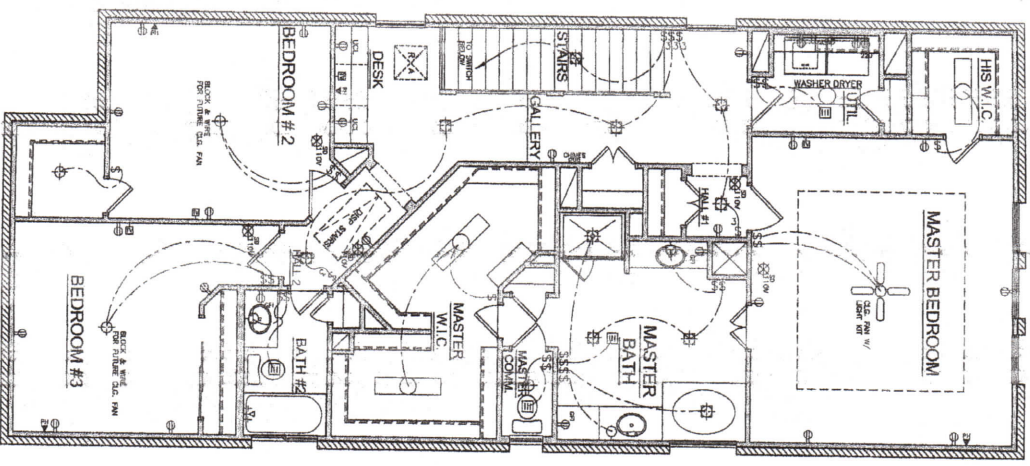


ELECTRICAL LEGEND	
⊞	SWITCH
⊞	THREE-WAY SWITCH
⊞	FOUR-WAY SWITCH
⊞	RE-INSTANT
⊞	DUPLEX
⊞	GFI DUPLEX
⊞	COUNTERTOP DUPLEX
⊞	SPLIT WIRE DUPLEX
⊞	220 VOLT OUTLET
⊞	QUADRUPLEX
⊞	CEILING DUPLEX
⊞	FLOOR DUPLEX
⊞	JUNCTION
⊞	DOOR BELL
⊞	GARAGE DOOR
⊞	PHONE OUTLET
⊞	TV OUTLET
⊞	SPEAKER
⊞	THERMOSTAT
⊞	SMOKE DETECTOR
⊞	CARBON MONOXIDE DETECTOR
⊞	RECESSED CEILING LIGHT
⊞	RECESSED ETERNAL LIGHT
⊞	WALL HANG LIGHT
⊞	ETERNAL LIGHT
⊞	LANDSCAPING LIGHT
⊞	FLOORLIGHT
⊞	VENT
⊞	VENT AND LIGHT
⊞	HEAT AND LIGHT
⊞	HEAT, VENT AND LIGHT
⊞	HEAT, VENT AND LIGHT
⊞	FLUORESCENT LIGHT

1 FIRST FLOOR ELECTRICAL PLAN



2 2ND FLOOR ELECTRICAL PLAN



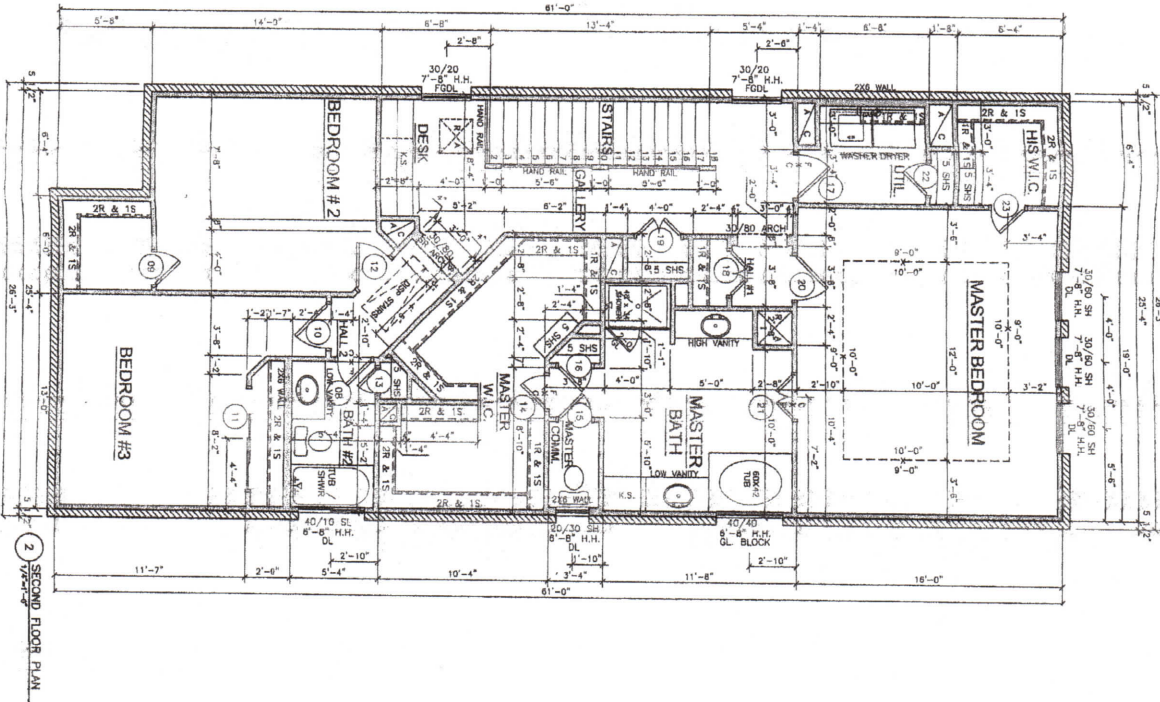
SW. REL. AUTOMATIC REV. 2/10/06
 ISSUED R-11-03
 SHEET NO. FLOOR ELECTRICAL
 PLAN NO. N-2536



01/28/04	REV. RE. MEND
03/15/04	REV. RE. MEND
04/22/04	REV. RE. MEND
11/12/07	REV. RE. MEND
06/05/08	REV. RE. MEND

Number	DOOR SIZE	SWING	Direction	Remarks
09	2'-0" x 6'-8"	INT	Right	
10	2'-0" x 6'-8"	INT	Right	
11	2'-0" x 6'-8"	INT	Right	
12	2'-0" x 6'-8"	INT	Right	
13	2'-0" x 6'-8"	INT	Right	
14	2'-0" x 6'-8"	INT	Right	
15	2'-0" x 6'-8"	INT	Right	
16	2'-0" x 6'-8"	INT	Right	
17	2'-0" x 6'-8"	INT	Right	
18	2'-0" x 6'-8"	INT	Right	
19	2'-0" x 6'-8"	INT	Right	
20	2'-0" x 6'-8"	INT	Right	
21	2'-0" x 6'-8"	INT	Right	
22	2'-0" x 6'-8"	INT	Right	
23	2'-0" x 6'-8"	INT	Right	

Room No.	Room Name	Finish	Notes
101	HALL	1/2" Gypsum Board	
102	CL. #1	1/2" Gypsum Board	
103	CL. #2	1/2" Gypsum Board	
104	CL. #3	1/2" Gypsum Board	
105	CL. #4	1/2" Gypsum Board	
106	CL. #5	1/2" Gypsum Board	
107	CL. #6	1/2" Gypsum Board	
108	CL. #7	1/2" Gypsum Board	
109	CL. #8	1/2" Gypsum Board	
110	CL. #9	1/2" Gypsum Board	
111	CL. #10	1/2" Gypsum Board	
112	CL. #11	1/2" Gypsum Board	
113	CL. #12	1/2" Gypsum Board	
114	CL. #13	1/2" Gypsum Board	
115	CL. #14	1/2" Gypsum Board	
116	CL. #15	1/2" Gypsum Board	
117	CL. #16	1/2" Gypsum Board	
118	CL. #17	1/2" Gypsum Board	
119	CL. #18	1/2" Gypsum Board	
120	CL. #19	1/2" Gypsum Board	
121	CL. #20	1/2" Gypsum Board	
122	CL. #21	1/2" Gypsum Board	
123	CL. #22	1/2" Gypsum Board	
124	CL. #23	1/2" Gypsum Board	
125	CL. #24	1/2" Gypsum Board	
126	CL. #25	1/2" Gypsum Board	
127	CL. #26	1/2" Gypsum Board	
128	CL. #27	1/2" Gypsum Board	
129	CL. #28	1/2" Gypsum Board	
130	CL. #29	1/2" Gypsum Board	
131	CL. #30	1/2" Gypsum Board	
132	CL. #31	1/2" Gypsum Board	
133	CL. #32	1/2" Gypsum Board	
134	CL. #33	1/2" Gypsum Board	
135	CL. #34	1/2" Gypsum Board	
136	CL. #35	1/2" Gypsum Board	
137	CL. #36	1/2" Gypsum Board	
138	CL. #37	1/2" Gypsum Board	
139	CL. #38	1/2" Gypsum Board	
140	CL. #39	1/2" Gypsum Board	
141	CL. #40	1/2" Gypsum Board	
142	CL. #41	1/2" Gypsum Board	
143	CL. #42	1/2" Gypsum Board	
144	CL. #43	1/2" Gypsum Board	
145	CL. #44	1/2" Gypsum Board	
146	CL. #45	1/2" Gypsum Board	
147	CL. #46	1/2" Gypsum Board	
148	CL. #47	1/2" Gypsum Board	
149	CL. #48	1/2" Gypsum Board	
150	CL. #49	1/2" Gypsum Board	
151	CL. #50	1/2" Gypsum Board	



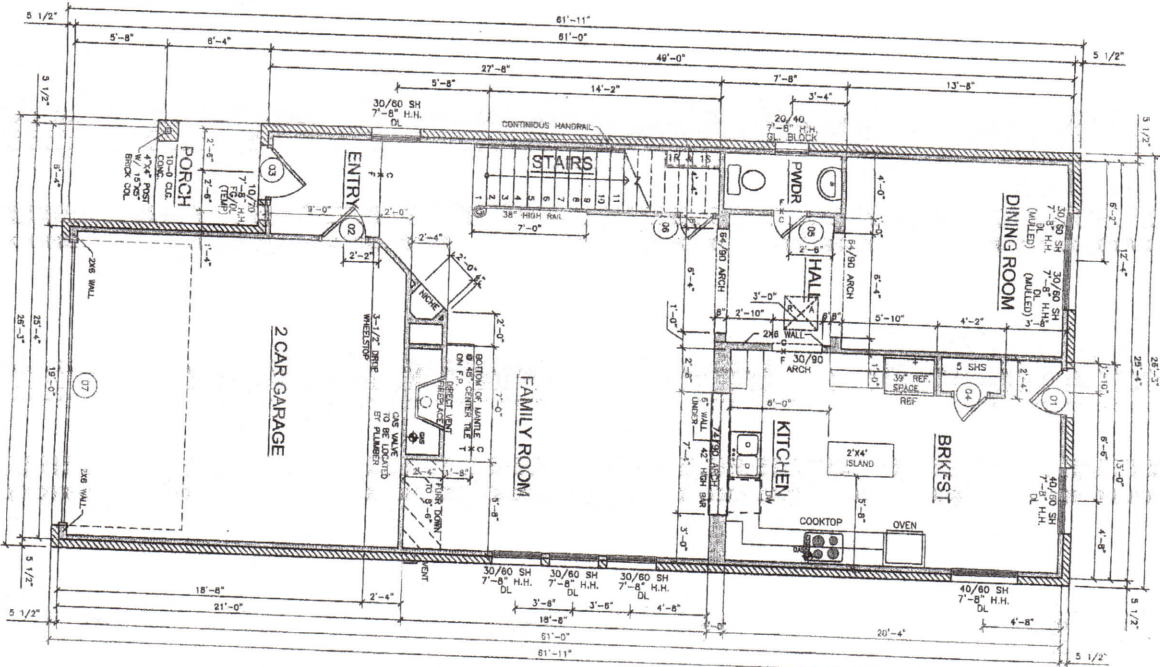
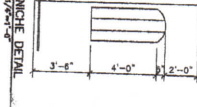
Partwood Builders 2140... PLAN NO. N-2536

Partwood Builders
 2140...
 ...
 ...
PLAN NO. N-2536

01/28/04 REV. RE. MEND
03/15/04 REV. RE. MEND
04/22/04 REV. RE. MEND
05/06/08 REV. RE. MEND
07/17/12 REV. RE. MEND

Room Number	Floor Area	Length	Width	Partitions	Usage	Partitions	Usage
01	2'-8" x 8'-0"	8'-0"	2'-8"
02	2'-8" x 8'-0"	8'-0"	2'-8"
03	2'-8" x 8'-0"	8'-0"	2'-8"
04	2'-8" x 8'-0"	8'-0"	2'-8"
05	2'-8" x 8'-0"	8'-0"	2'-8"
06	2'-8" x 8'-0"	8'-0"	2'-8"
07	17'-0" x 7'-0"	7'-0"	17'-0"

Number	Door Size	Wall	Type	Open Direction	Remarks
01	2'-8" x 8'-0"	...	EXTENSOR	RIGHT	S.S. W/ GLASS
02	2'-8" x 8'-0"	...	EXTENSOR	LEFT	6 PANEL
03	2'-8" x 8'-0"	...	EXTENSOR	LEFT	
04	2'-8" x 8'-0"	...	EXTENSOR	LEFT	
05	2'-8" x 8'-0"	...	INTERSIC	LEFT	
06	2'-8" x 8'-0"	...	INTERSIC	LEFT	
07	17'-0" x 7'-0"	...	INTERSEAL	NA	



2139-
2125

2139
2125

Area	Square Footage
FIRST FLOOR	1084
SECOND FLOOR	1451
TOTAL DWG	2535
GARAGE	396
PORCH	49



01/28/04	REV. RE. MEMO
03/15/04	REV. RE. MEMO
04/22/04	REV. RE. MEMO
11/12/07	REV. RE. MEMO
06/06/08	REV. RE. MEMO
01/17/12	REV. RE. MEMO

1 FIRST FLOOR PLAN