

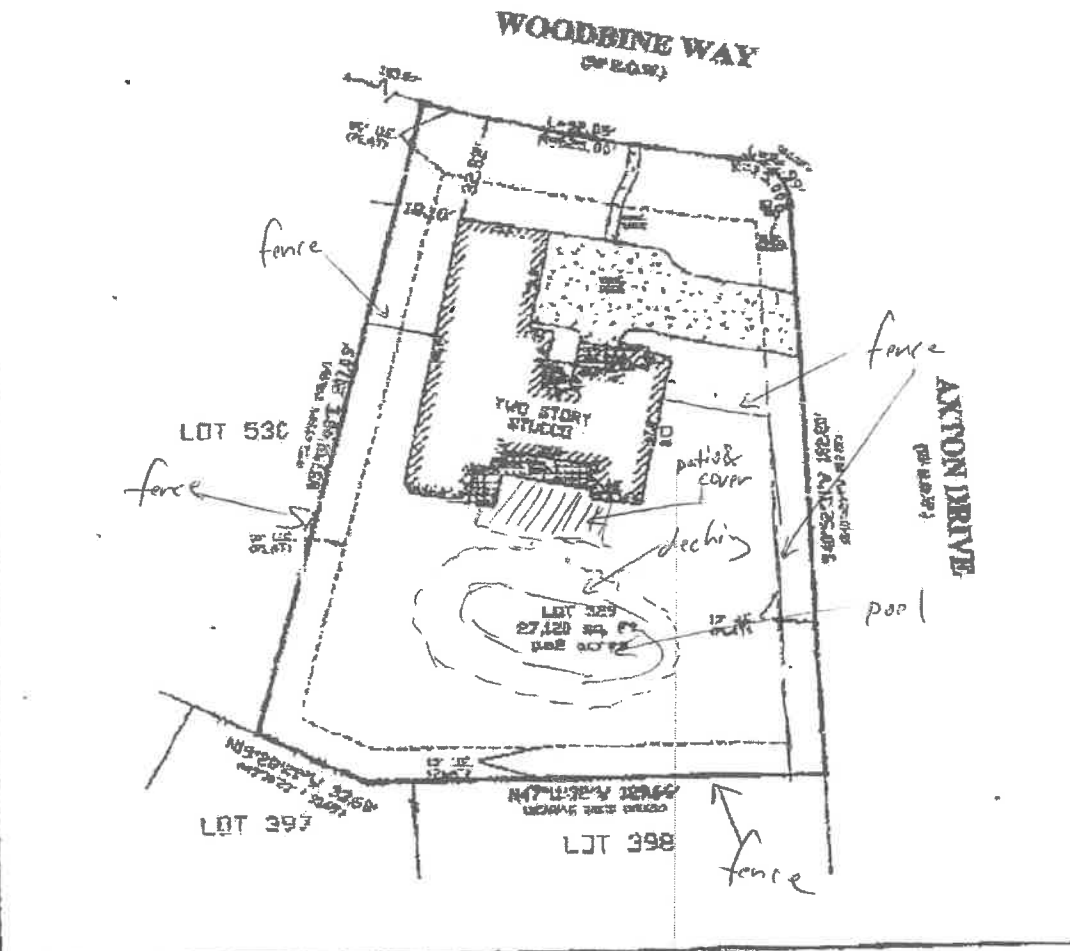
PAR-22-2106 01:20PM TO-143030400H

FROM-

T-270 P.601/002 P-001

NOT TO SCALE TO PROPERTY BOUNDARIES. DIMENSIONS, AREA, PERCENTAGE, AND OTHER DATA GIVEN ON THIS PLAN ARE FOR INFORMATION ONLY AND SHOULD BE VERIFIED BY THE CLIENT.

<ul style="list-style-type: none"> <li>1 - 1" = 100' SCALE</li> <li>2 - 1" = 50' SCALE</li> <li>3 - 1" = 25' SCALE</li> <li>4 - 1" = 12.5' SCALE</li> <li>5 - 1" = 6.25' SCALE</li> <li>6 - 1" = 3.125' SCALE</li> <li>7 - 1" = 1.5625' SCALE</li> <li>8 - 1" = 0.78125' SCALE</li> <li>9 - 1" = 0.390625' SCALE</li> <li>10 - 1" = 0.1953125' SCALE</li> <li>11 - 1" = 0.09765625' SCALE</li> <li>12 - 1" = 0.048828125' SCALE</li> <li>13 - 1" = 0.0244140625' SCALE</li> <li>14 - 1" = 0.01220703125' SCALE</li> <li>15 - 1" = 0.006103515625' SCALE</li> <li>16 - 1" = 0.0030517578125' SCALE</li> <li>17 - 1" = 0.00152587890625' SCALE</li> <li>18 - 1" = 0.000762939453125' SCALE</li> <li>19 - 1" = 0.0003814697265625' SCALE</li> <li>20 - 1" = 0.00019073486328125' SCALE</li> </ul>	<ul style="list-style-type: none"> <li>1 - 1" = 100' SCALE</li> <li>2 - 1" = 50' SCALE</li> <li>3 - 1" = 25' SCALE</li> <li>4 - 1" = 12.5' SCALE</li> <li>5 - 1" = 6.25' SCALE</li> <li>6 - 1" = 3.125' SCALE</li> <li>7 - 1" = 1.5625' SCALE</li> <li>8 - 1" = 0.78125' SCALE</li> <li>9 - 1" = 0.390625' SCALE</li> <li>10 - 1" = 0.1953125' SCALE</li> <li>11 - 1" = 0.09765625' SCALE</li> <li>12 - 1" = 0.048828125' SCALE</li> <li>13 - 1" = 0.0244140625' SCALE</li> <li>14 - 1" = 0.01220703125' SCALE</li> <li>15 - 1" = 0.006103515625' SCALE</li> <li>16 - 1" = 0.0030517578125' SCALE</li> <li>17 - 1" = 0.00152587890625' SCALE</li> <li>18 - 1" = 0.000762939453125' SCALE</li> <li>19 - 1" = 0.0003814697265625' SCALE</li> <li>20 - 1" = 0.00019073486328125' SCALE</li> </ul>	<ul style="list-style-type: none"> <li>B.E. = BUILDING ELEVATION</li> <li>C.E. = CURB ELEVATION</li> <li>F.E. = FINISH FLOOR ELEVATION</li> <li>G.E. = GROUND ELEVATION</li> <li>H.E. = HATCH ELEVATION</li> <li>I.E. = INTERIOR FINISH ELEVATION</li> <li>J.E. = JOIST ELEVATION</li> <li>K.E. = KITCHEN ELEVATION</li> <li>L.E. = LIVING ELEVATION</li> <li>M.E. = MOUNTAIN ELEVATION</li> <li>N.E. = NORTH ELEVATION</li> <li>O.E. = OFFICE ELEVATION</li> <li>P.E. = PORCH ELEVATION</li> <li>Q.E. = QUARTERS ELEVATION</li> <li>R.E. = RESTROOM ELEVATION</li> <li>S.E. = SERVICE ELEVATION</li> <li>T.E. = TERRACE ELEVATION</li> <li>U.E. = UTILITY ELEVATION</li> <li>V.E. = VERANDA ELEVATION</li> <li>W.E. = WALL ELEVATION</li> <li>X.E. = WINDOW ELEVATION</li> <li>Y.E. = YARD ELEVATION</li> <li>Z.E. = ZONE ELEVATION</li> </ul>
--	--	---



**PROPERTY ADDRESS:** 3290 WOODBINE WAY  
**PROPERTY LOCATION:** 3290 WOODBINE WAY, KERRVILLE, TEXAS 78021  
 Lot 329, Part of the LAND, KERRVILLE COUNTY UNIT #1, QUINCE MEADOWS SURVEY, in the City of Fort Davis Ranch, Kerrville County, Texas (Reference to map of plat thereof recorded in Volume 4, Page 188-189, Map Records of Kerrville County, Texas)

**Westar Alamo**  
LAND SURVEYORS, INC.  
710 ONE 18TH STREET, SUITE 1000  
KERRVILLE, TEXAS 78021 FAX 337-370-0000

DATE: 04/27/05  
 TIME: 12:28  
 BY: J.A.

WESTAR ALAMO  
 LAND SURVEYORS, INC.  
 710 ONE 18TH STREET, SUITE 1000  
 KERRVILLE, TEXAS 78021  
 FAX 337-370-0000

Fax Copy Not To Scale