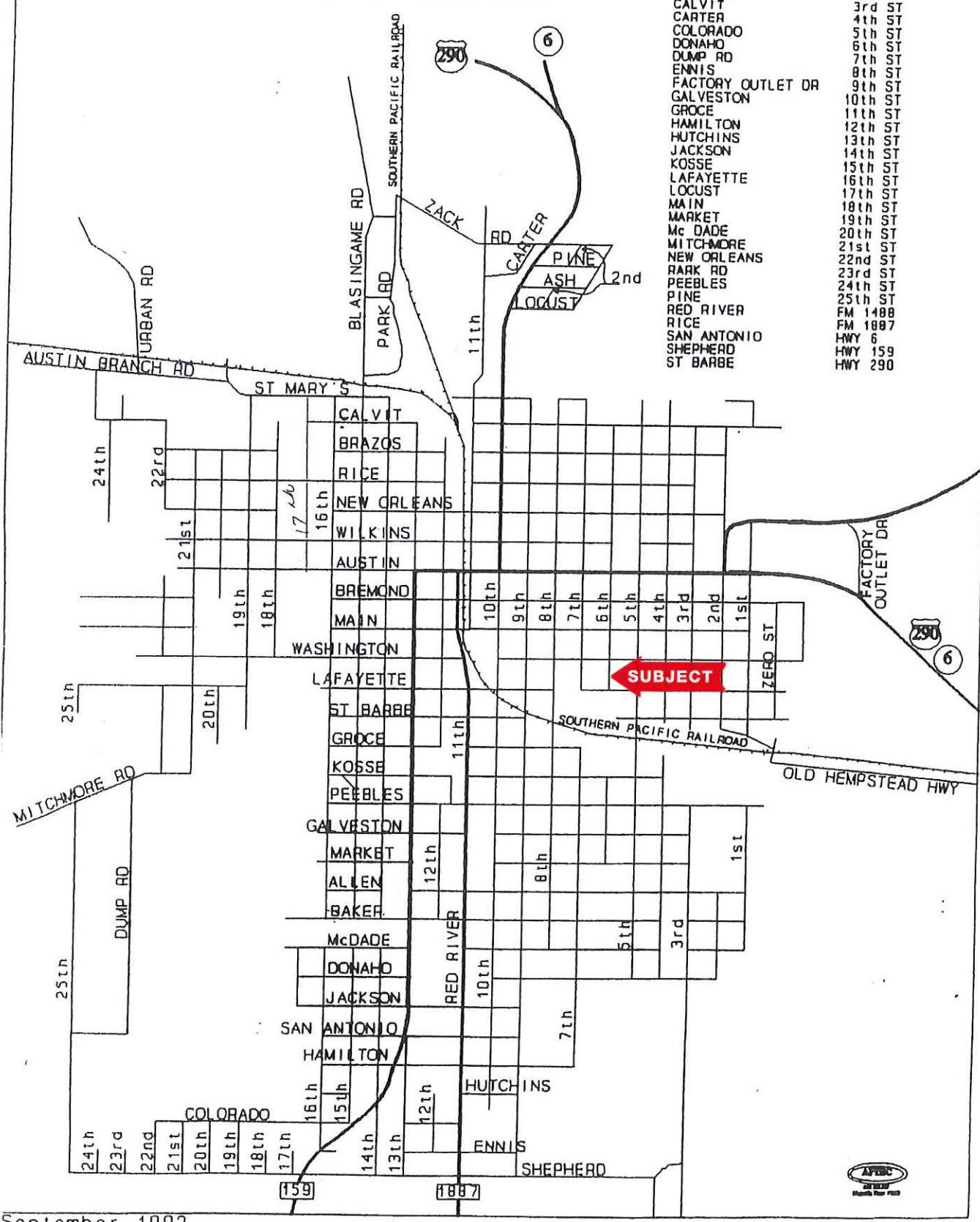


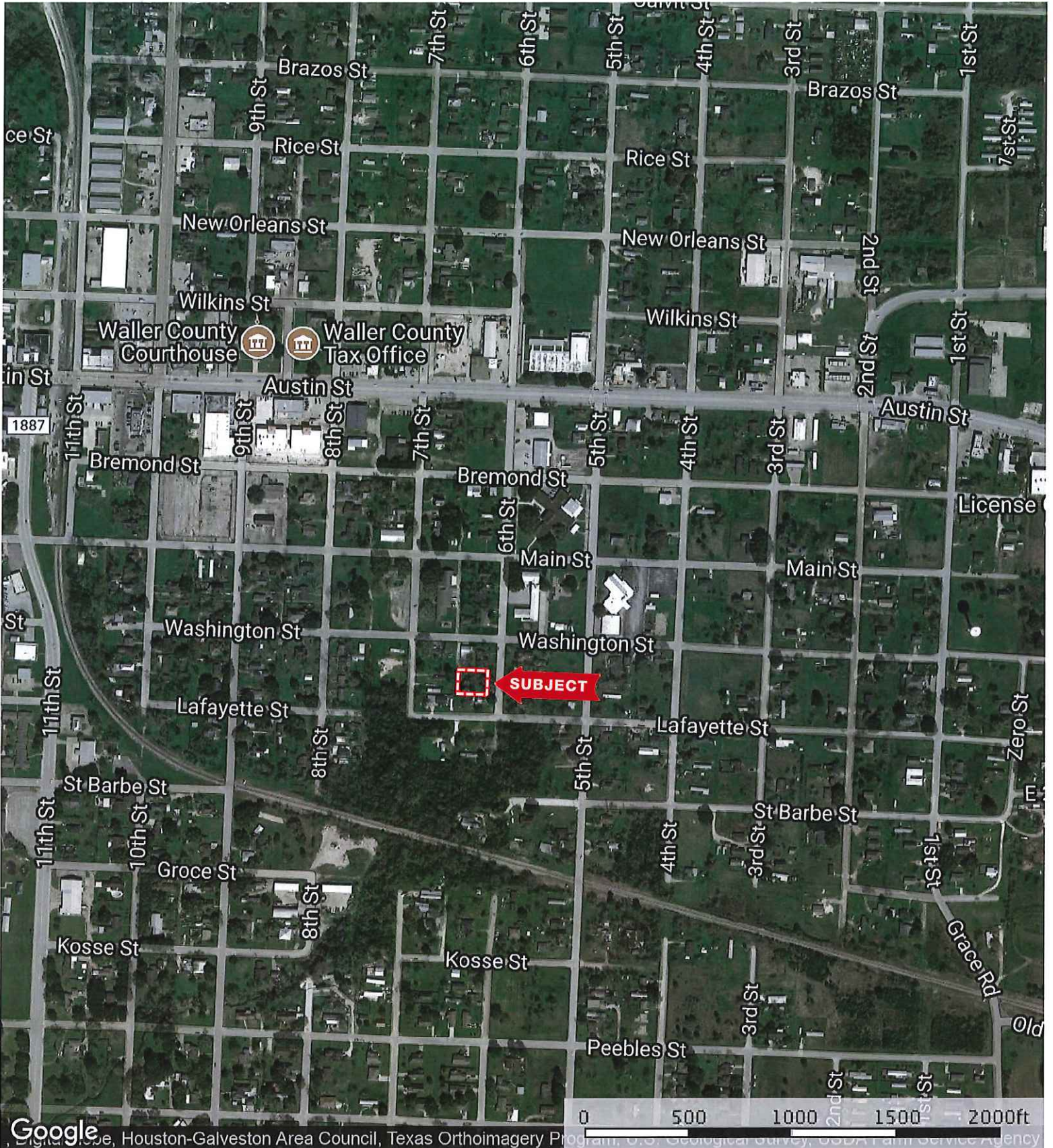
HEMPSTEAD

- ALLEN
 - ASH
 - AUSTIN
 - AUSTIN BRANCH
 - BAKER
 - BLASINGAME
 - BRAZOS
 - BREMOND
 - CALVIT
 - CARTER
 - COLORADO
 - DONAH
 - DUMP RD
 - ENNIS
 - FACTORY OUTLET DR
 - GALVESTON
 - GROCE
 - HAMILTON
 - HUTCHINS
 - JACKSON
 - KOSSE
 - LAFAYETTE
 - LOCUST
 - MAIN
 - MARKET
 - Mc DADE
 - MITCHMORE
 - NEW ORLEANS
 - RARK RD
 - PEEBLES
 - PINE
 - RED RIVER
 - RICE
 - SAN ANTONIO
 - SHEPHERD
 - ST BARBE
- ST MARY'S
 - URBAN
 - WASHINGTON
 - WILKINS
 - ZACK RD
 - ZERO ST
 - 1st ST
 - 2nd ST
 - 3rd ST
 - 4th ST
 - 5th ST
 - 6th ST
 - 7th ST
 - 8th ST
 - 9th ST
 - 10th ST
 - 11th ST
 - 12th ST
 - 13th ST
 - 14th ST
 - 15th ST
 - 16th ST
 - 17th ST
 - 18th ST
 - 19th ST
 - 20th ST
 - 21st ST
 - 22nd ST
 - 23rd ST
 - 24th ST
 - 25th ST
 - FM 1488
 - FM 1887
 - HWY 6
 - HWY 159
 - HWY 290



1131 Sixth St.

Waller County, Texas, AC +/-



Google, Houston-Galveston Area Council, Texas Orthimagery Program, U.S. Geological Survey, USDA Farm Service Agency


 Boundary

1131 Sixth St.
Waller County, Texas, AC +/-



Google Imagery ©2018, DigitalGlobe, Houston-Galveston Area Council, Texas Center for Geospatial Information, U.S. Geological Survey

 Boundary

 The information contained herein was obtained from sources deemed to be reliable. MapRight Services makes no warranties or guarantees as to the completeness or accuracy thereof. 844.932.6277 - mapright.com