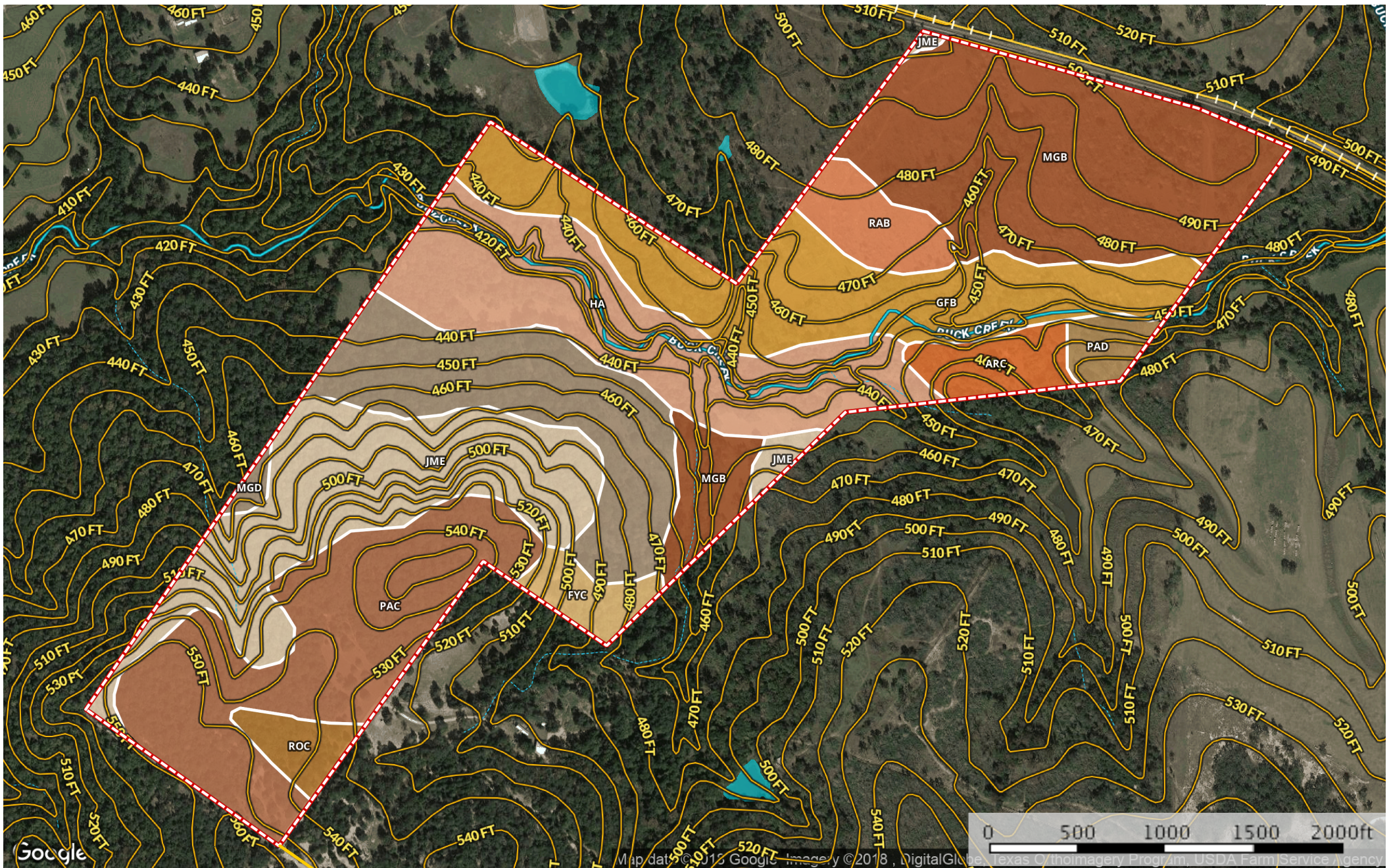


Boykin

Leon County, Texas, 196.32 AC +/-



- Primary Road
- Boundary
- Stream, Intermittent
- River/Creek
- Water Body

Boundary 200.2 ac

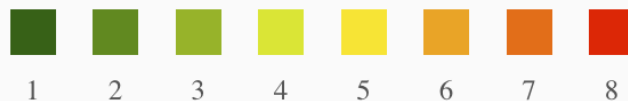
SOIL CODE	SOIL DESCRIPTION	ACRES	%	CAP
PaD	Padina loamy fine sand, 8 to 15 percent slopes	2.7	1.34	6e
ArC	Arenosa fine sand, 1 to 8 percent slopes	4.9	2.47	4s
JmE	Jedd-Margie complex, 5 to 25 percent slopes	29.5	14.71	6e
GfB	Gasil fine sandy loam, 1 to 5 percent slopes	28.4	14.16	3e
MgB	Margie fine sandy loam, 1 to 5 percent slopes	41.4	20.69	3e
MgD	Margie fine sandy loam, 5 to 8 percent slopes	22.6	11.29	4e
Ha	Hatliff fine sandy loam, frequently flooded	27.7	13.84	5w
RaB	Rader fine sandy loam, 1 to 3 percent slopes	5.6	2.81	3e
FyC	Flynn fine sandy loam, 3 to 8 percent slopes	3.6	1.81	4e
RoC	Robco loamy fine sand, 1 to 8 percent slopes	3.2	1.62	3e
PaC	Padina loamy fine sand, 1 to 8 percent slopes	30.6	15.26	3e
TOTALS		200.2	100%	3.91

Capability Legend

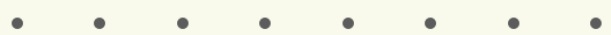
Increased Limitations and Hazards

Decreased Adaptability and Freedom of Choice Users

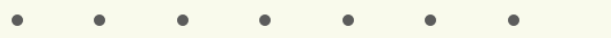
Land, Capability Class(non-irrigated)



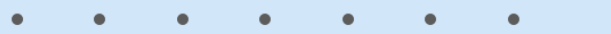
'Wild Life'



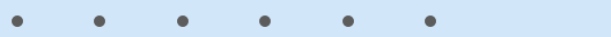
Forestry



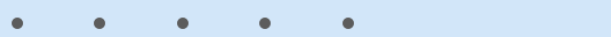
Limited



Moderate



Intense



Limited



Moderate



Intense



Very Intense



Grazing Cultivation

(c) climatic limitations (e) susceptibility to erosion

(s) soil limitations within the rooting zone (w) excess of water