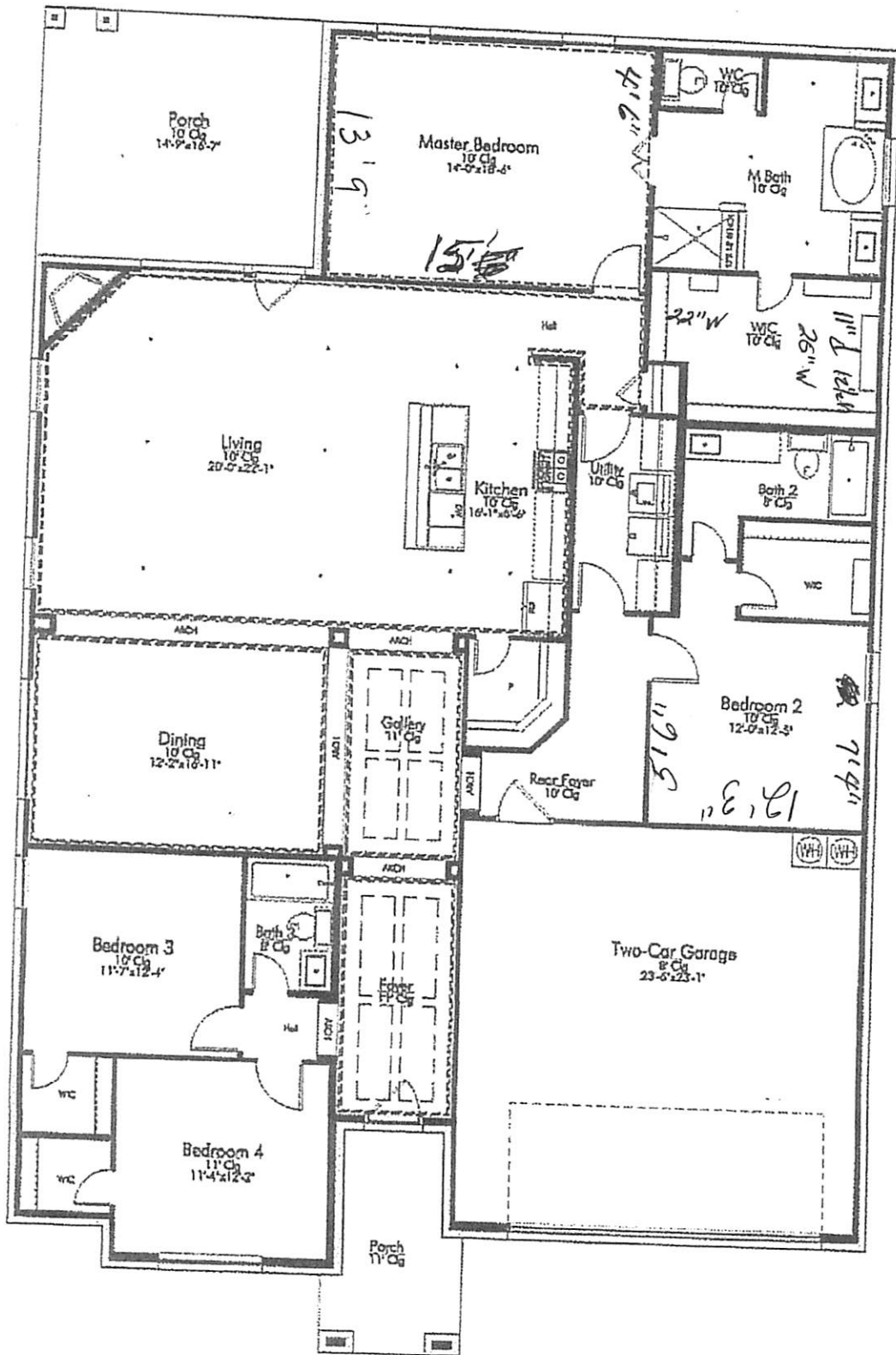


E26

FLOOR



Building Footprint



Lake Creek –Elite Collection

Included Features

Stylecraft Package

Energy Efficiency

- Vinyl, double pane insulated windows w/half screens and double locks
- Divided light windows on front
- Central 14 SEER air conditioner
- Turbine vent system
- Polyseal foam in all wall penetrations
- Radiant barrier decking
- Sheathing behind brick/stone (per plan)
- Programmable thermostat

Security

- Deadbolt locks on exterior doors
- Smoke/carbon monoxide detectors (per code)
- Flood lights at front and back of house

Exterior

- Cement fiberboard siding (per plan) w/ 25 year limited warranty
- Stone and/or brick (per plan)

General

- Granite countertops with straight edge throughout
- Interior walls painted flat latex, standard color
- Baseboards and casings painted white enamel
- Ceilings painted color of walls
- Two-panel, Roman round top, interior doors
- TV cable in all bedrooms & living spaces (per plan)
- Pre-wired for garage door opener

- Engineered post-tension foundation
- Sidewalk from front door to driveway (approx. 42" wide, per plan)
- Copper wiring
- 16" on-center studs, all load-bearing walls

Builder Quality Programs

- Pre-construction meeting with superintendent and sales representative
- Two homeowner walkthroughs before closing (first walk and customer sign off)
- Home builder one year warranty program with full-time, professional Warranty Department
- Independent, third-party, private inspector at slab, pre-sheetrock, and move-in stage

Series Package: Elite

Bath

- Towel bars, paper holders, and faucets (color chosen w/pkg)
- Elongated toilet in all baths (color chosen w/pkg)
- Synthetic marble garden tub in master bath w/tile surround (most plans; color chosen w/pkg)
- Shower w/tile walls, floor and 80" frameless clear glass in master bath (per plan)
- Steel tub/shower combo w/ tile surround in secondary baths
- Gentlemen's height vanity in master bath
- Granite vanity with rectangular under mount sinks in all bathrooms
- Medicine cabinet in bath rooms (minimum of 1, per plan)
- Decorative framed mirrors in master bath
- Linen cabinet above toilet (per plan)

Laundry

- Upper cabinets over washer/dryer (per plan)
- Rod and shelf over base cabinet (per plan)

Kitchen

- Upper cabinets over refrigerator (per plan)
- Under cabinet lights
- 9" deep, under mount double sink (color chosen w/pkg)
- Faucet w/sprayer (color chosen w/pkg)
- Recessed lights, halogen 75 watt (per plan)

General

- 5-1/4" baseboards
- Windowsills painted to match baseboards and casings

- 2-1/4" door casings
- Metal stair balusters (if applicable)
- Garage painted to match interior of house
- Crown molding (per plan)
- Pre-wired for one Cat 5 Telephone
- Elite light fixtures (color chosen w/pkg)
- Ceiling fan w/light kit in all bedrooms and living spaces
- Level 3 wood or Level 2 tile in first floor living spaces, halls, foyer, kitchen, breakfast, and dining
- Level 2 tile in utility and all baths
- Level 2 carpet in all bedrooms, closets, and upstairs living spaces
- Entry lockset (color chosen w/pkg)
- Front entry door w/etched glass insert
- Two-car garage with Carriage style steel door

Subdivision Package

Energy Efficiency

- Central 80% AFUE gas furnace
- 40 gal. high recovery gas water heater
- 36" metal fireplace w/gas lighter, stone raised hearth or cast stone surround (per plan)
- R-38 blown insulation in ceiling
- R-13 batt insulation in walls
- R-19 batt insulation in sloped ceiling

Kitchen

- 42" raised panel wood cabinets
- Level 3 tile kitchen backsplash

Appliances

- Stainless appliances
- Level 3: Gas Appliances
 - Gas cooktop (per plan)
 - Separate oven (per plan)
 - Range (per plan)
 - Dishwasher
 - Micro-hood –OR– separate vent hood and built in microwave (per plan)

Exterior

- Level 3 builder's landscape package
- Full yard, St. Augustine sod
- Two trees (type per builder)

- Full yard irrigation system
- 10' x 12' rear concrete patio (unless covered porch included)
- 6' full cedar fence w/gate
- Community mailbox system
- Masonry address block
- 30-year dimensional shingles
- Brick to eave, per plan

General

- 1 lite fiberglass rear door w/ mini blind insert
- Garage door opener w/ 2 remotes
- Prewired for security

HOA Dues: \$300 quarterly, includes all lawn maintenance and \$350 transfer fee
Subject to change

*The above standard features are included in most plans. Some plans, however, may not have all features (e.g., fireplace, separate shower, garden tubs, etc.). Builder reserves the right to change specifications and features without notice. See Sales Executive for details.

Updated 2/3/2016

1-866-977-0998