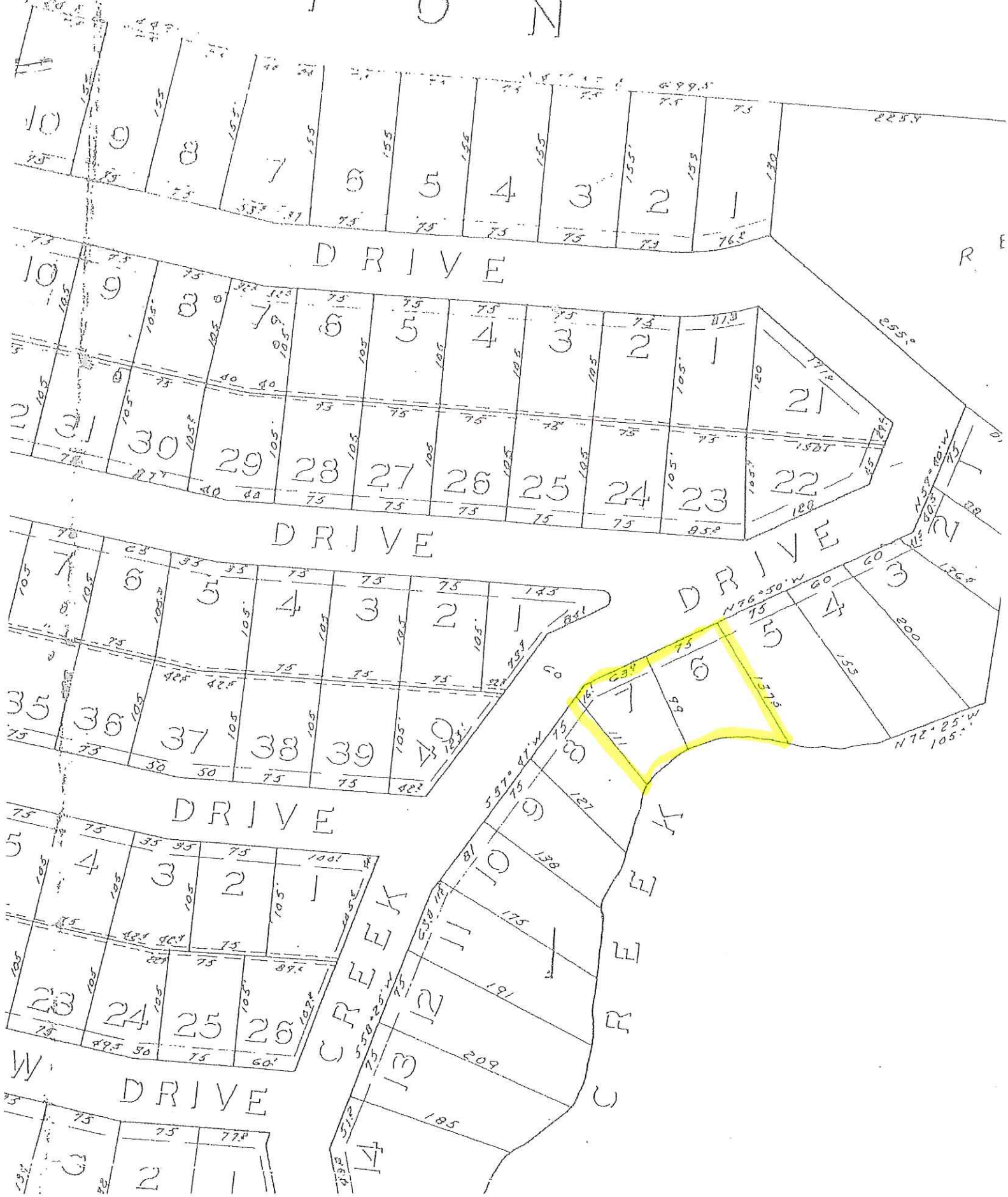
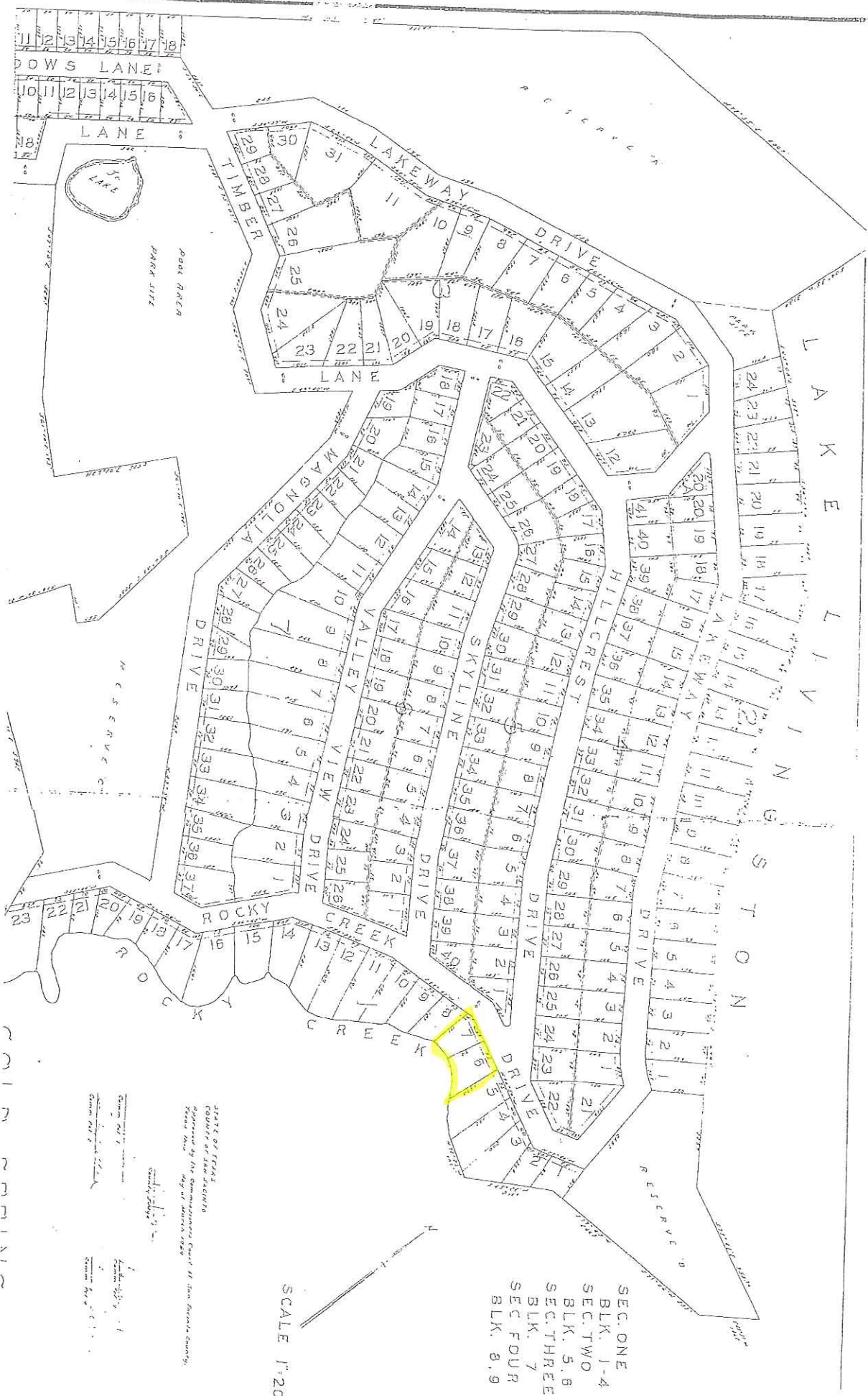


# G O T O N





SEC. ONE  
 BLK. 1-4  
 SEC. TWO  
 BLK. 5, 6  
 SEC. THREE  
 BLK. 7  
 SEC. FOUR  
 BLK. 8, 9

SCALE 1"=200'

JAMES P. TRAY  
 COUNTY CLERK  
 COUNTY OF SAN JUAN  
 STATE OF NEW MEXICO  
 Approved by the Commissioners Court of San Juan County,  
 New Mexico, this 14th day of January, 1928.

COUNTY OF SAN JUAN  
 STATE OF NEW MEXICO  
 JAMES P. TRAY  
 COUNTY CLERK  
 COUNTY OF SAN JUAN  
 STATE OF NEW MEXICO