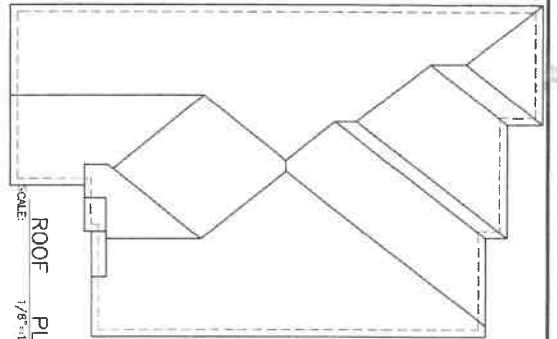
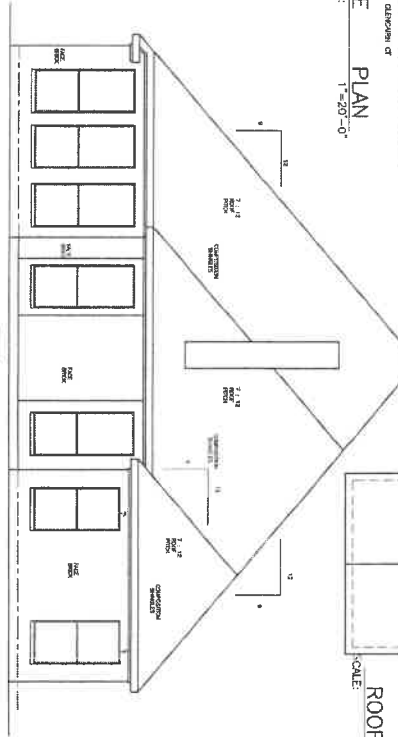


SITE PLAN  
SCALE: 1"=20'-0"



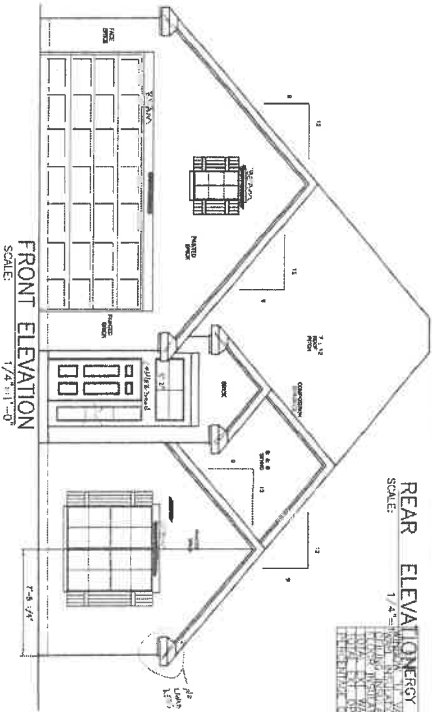
ROOF PLAN  
SCALE: 1/8"=1'-0"



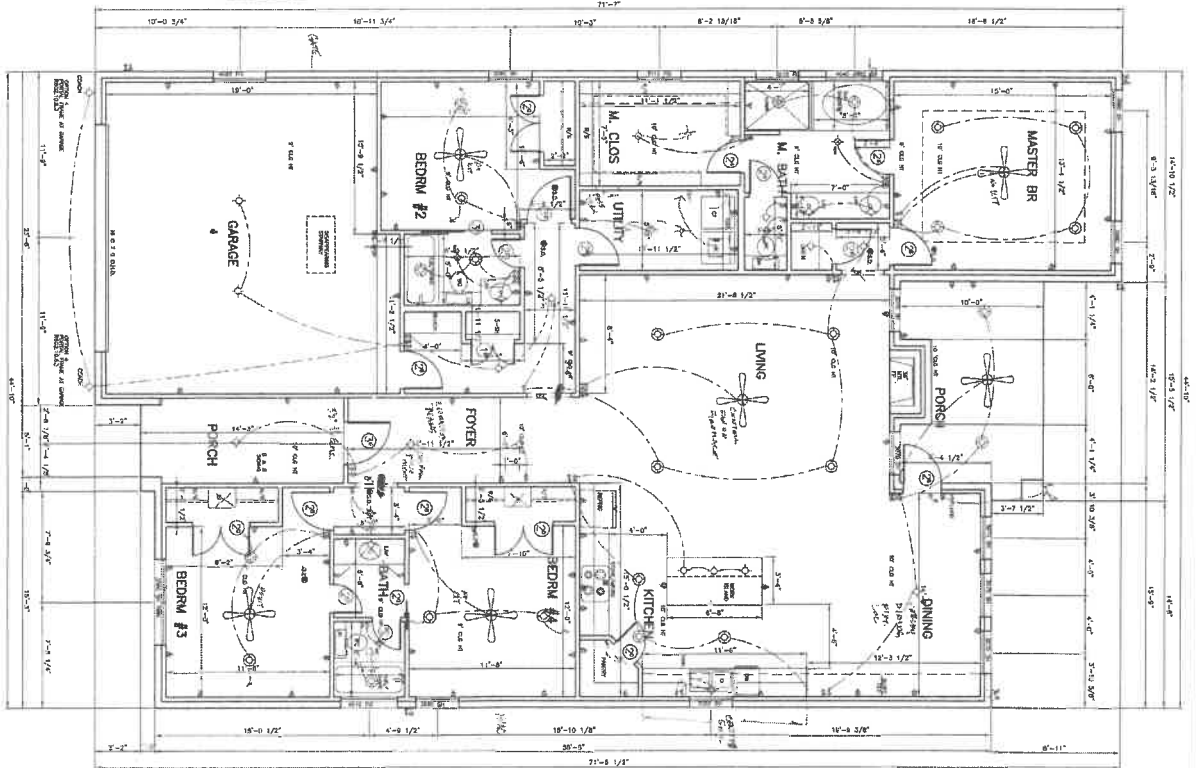
REAR ELEVATION  
SCALE: 1/4"=1'-0"

ENERGY CODE ITEMS

1	ROOF	MINIMUM R-19
2	WALLS	MINIMUM R-13
3	FLOORS	MINIMUM R-10
4	CEILING	MINIMUM R-10
5	GLAZING	MINIMUM U-0.30
6	DOORS	MINIMUM U-0.35
7	WINDOWS	MINIMUM U-0.35
8	SCREEN DOORS	MINIMUM U-0.35
9	SCREEN WINDOWS	MINIMUM U-0.35
10	SCREEN DOORS	MINIMUM U-0.35
11	SCREEN WINDOWS	MINIMUM U-0.35
12	SCREEN DOORS	MINIMUM U-0.35
13	SCREEN WINDOWS	MINIMUM U-0.35
14	SCREEN DOORS	MINIMUM U-0.35
15	SCREEN WINDOWS	MINIMUM U-0.35
16	SCREEN DOORS	MINIMUM U-0.35
17	SCREEN WINDOWS	MINIMUM U-0.35
18	SCREEN DOORS	MINIMUM U-0.35
19	SCREEN WINDOWS	MINIMUM U-0.35
20	SCREEN DOORS	MINIMUM U-0.35
21	SCREEN WINDOWS	MINIMUM U-0.35
22	SCREEN DOORS	MINIMUM U-0.35
23	SCREEN WINDOWS	MINIMUM U-0.35
24	SCREEN DOORS	MINIMUM U-0.35
25	SCREEN WINDOWS	MINIMUM U-0.35
26	SCREEN DOORS	MINIMUM U-0.35
27	SCREEN WINDOWS	MINIMUM U-0.35
28	SCREEN DOORS	MINIMUM U-0.35
29	SCREEN WINDOWS	MINIMUM U-0.35
30	SCREEN DOORS	MINIMUM U-0.35
31	SCREEN WINDOWS	MINIMUM U-0.35
32	SCREEN DOORS	MINIMUM U-0.35
33	SCREEN WINDOWS	MINIMUM U-0.35
34	SCREEN DOORS	MINIMUM U-0.35
35	SCREEN WINDOWS	MINIMUM U-0.35
36	SCREEN DOORS	MINIMUM U-0.35
37	SCREEN WINDOWS	MINIMUM U-0.35
38	SCREEN DOORS	MINIMUM U-0.35
39	SCREEN WINDOWS	MINIMUM U-0.35
40	SCREEN DOORS	MINIMUM U-0.35
41	SCREEN WINDOWS	MINIMUM U-0.35
42	SCREEN DOORS	MINIMUM U-0.35
43	SCREEN WINDOWS	MINIMUM U-0.35
44	SCREEN DOORS	MINIMUM U-0.35
45	SCREEN WINDOWS	MINIMUM U-0.35
46	SCREEN DOORS	MINIMUM U-0.35
47	SCREEN WINDOWS	MINIMUM U-0.35
48	SCREEN DOORS	MINIMUM U-0.35
49	SCREEN WINDOWS	MINIMUM U-0.35
50	SCREEN DOORS	MINIMUM U-0.35
51	SCREEN WINDOWS	MINIMUM U-0.35
52	SCREEN DOORS	MINIMUM U-0.35
53	SCREEN WINDOWS	MINIMUM U-0.35
54	SCREEN DOORS	MINIMUM U-0.35
55	SCREEN WINDOWS	MINIMUM U-0.35
56	SCREEN DOORS	MINIMUM U-0.35
57	SCREEN WINDOWS	MINIMUM U-0.35
58	SCREEN DOORS	MINIMUM U-0.35
59	SCREEN WINDOWS	MINIMUM U-0.35
60	SCREEN DOORS	MINIMUM U-0.35
61	SCREEN WINDOWS	MINIMUM U-0.35
62	SCREEN DOORS	MINIMUM U-0.35
63	SCREEN WINDOWS	MINIMUM U-0.35
64	SCREEN DOORS	MINIMUM U-0.35
65	SCREEN WINDOWS	MINIMUM U-0.35
66	SCREEN DOORS	MINIMUM U-0.35
67	SCREEN WINDOWS	MINIMUM U-0.35
68	SCREEN DOORS	MINIMUM U-0.35
69	SCREEN WINDOWS	MINIMUM U-0.35
70	SCREEN DOORS	MINIMUM U-0.35
71	SCREEN WINDOWS	MINIMUM U-0.35
72	SCREEN DOORS	MINIMUM U-0.35
73	SCREEN WINDOWS	MINIMUM U-0.35
74	SCREEN DOORS	MINIMUM U-0.35
75	SCREEN WINDOWS	MINIMUM U-0.35
76	SCREEN DOORS	MINIMUM U-0.35
77	SCREEN WINDOWS	MINIMUM U-0.35
78	SCREEN DOORS	MINIMUM U-0.35
79	SCREEN WINDOWS	MINIMUM U-0.35
80	SCREEN DOORS	MINIMUM U-0.35
81	SCREEN WINDOWS	MINIMUM U-0.35
82	SCREEN DOORS	MINIMUM U-0.35
83	SCREEN WINDOWS	MINIMUM U-0.35
84	SCREEN DOORS	MINIMUM U-0.35
85	SCREEN WINDOWS	MINIMUM U-0.35
86	SCREEN DOORS	MINIMUM U-0.35
87	SCREEN WINDOWS	MINIMUM U-0.35
88	SCREEN DOORS	MINIMUM U-0.35
89	SCREEN WINDOWS	MINIMUM U-0.35
90	SCREEN DOORS	MINIMUM U-0.35
91	SCREEN WINDOWS	MINIMUM U-0.35
92	SCREEN DOORS	MINIMUM U-0.35
93	SCREEN WINDOWS	MINIMUM U-0.35
94	SCREEN DOORS	MINIMUM U-0.35
95	SCREEN WINDOWS	MINIMUM U-0.35
96	SCREEN DOORS	MINIMUM U-0.35
97	SCREEN WINDOWS	MINIMUM U-0.35
98	SCREEN DOORS	MINIMUM U-0.35
99	SCREEN WINDOWS	MINIMUM U-0.35
100	SCREEN DOORS	MINIMUM U-0.35



FRONT ELEVATION  
SCALE: 1/4"=1'-0"



FLOOR PLAN  
SCALE: 1/8"=1'-0"  
WRAP ENTIRE HOUSE OSB & HOUSEWRAP  
9' PLT HT

HEATED AREA = 2206 S.F.  
COVERED AREA = 261 S.F.  
GARAGE AREA = 474 S.F.

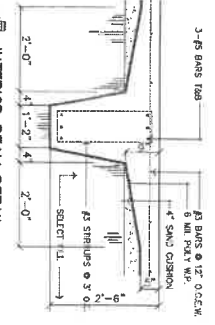
PLAN #2206 3204 GLENCAIRN CT  
A NEW SPEC HOME BY  
MAGRUDER HOMES

DATE: JAN. 2020

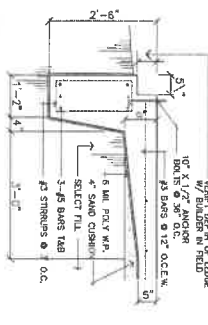
SHEET  
**A1**  
OF 2

\*KISSINGER DRAFTING & DESIGN\*  
1313 EAST VILLA MARCA DR.  
BRYAN, TEXAS 77803 (979) 888-3848

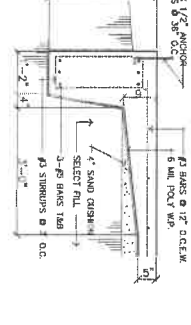
2-11-20 + 2-29-20 - 6



**INTERIOR BEAM DETAIL**  
SCALE: 3/4" = 1'-0"



**EXTERIOR BEAM DETAIL**  
SCALE: 3/4" = 1'-0"

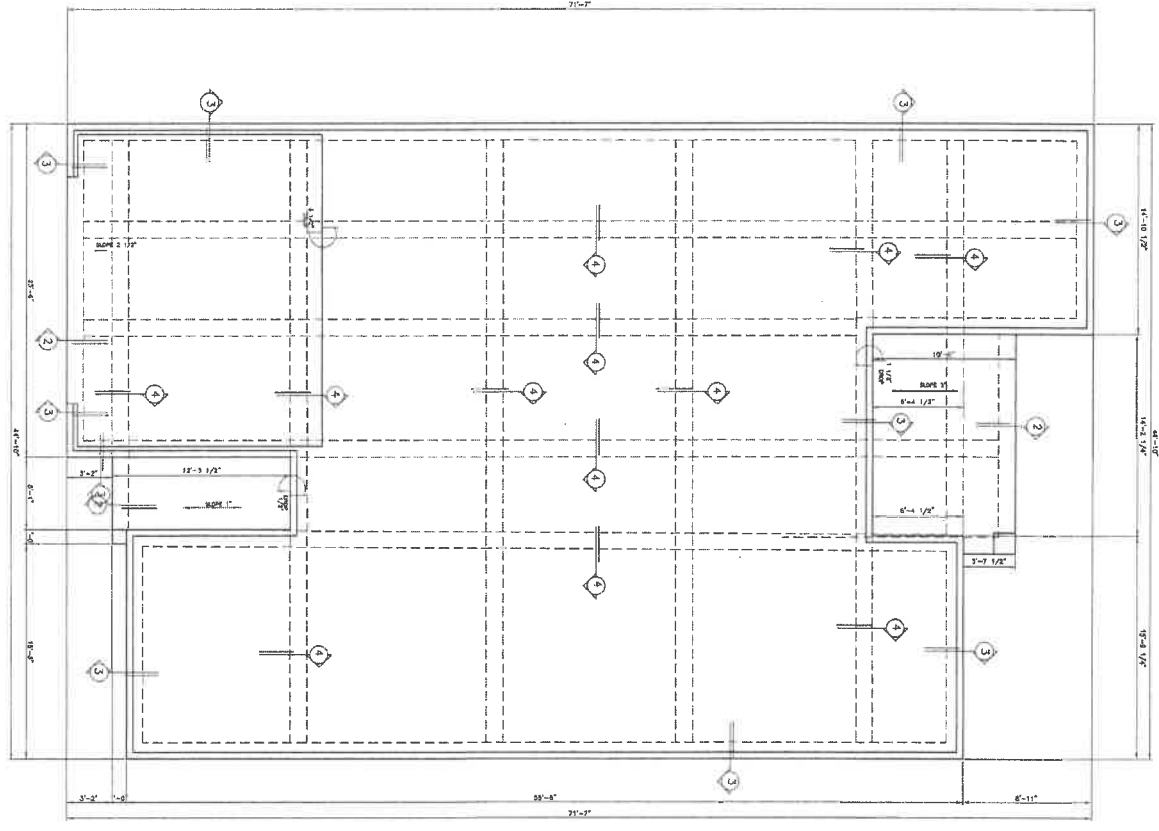


**EXTERIOR BEAM DETAIL**  
SCALE: 3/4" = 1'-0"

- GENERAL**
1. EXTERIOR ALL GRADE BEAMS TO BE UNREINFORCED CONCRETE.
  2. ALL REINFORCING STEEL SHALL BE DEFORMED BARS WITH HOOKS AND EARS AT ALL ANGLES. ALL REINFORCING STEEL SHALL BE FREE FROM RUST OR OTHER DEFECTS.
  3. ALL REINFORCING STEEL SHALL BE SET IN ACCORDANCE WITH THE REINFORCING SCHEDULE.
  4. ALL REINFORCING STEEL SHALL BE SET IN ACCORDANCE WITH THE REINFORCING SCHEDULE.

- CONCRETE**
1. ALL CONCRETE SHALL BE 3000 PSI MIN. COMPRESSIVE STRENGTH @ 28 DAYS.
  2. ALL CONCRETE SHALL BE PLACED AND FINISHED IN ACCORDANCE WITH THE REINFORCING SCHEDULE.
  3. ALL CONCRETE SHALL BE PLACED AND FINISHED IN ACCORDANCE WITH THE REINFORCING SCHEDULE.

- REINFORCING SCHEDULE**
1. ALL REINFORCING STEEL SHALL BE DEFORMED BARS WITH HOOKS AND EARS AT ALL ANGLES. ALL REINFORCING STEEL SHALL BE FREE FROM RUST OR OTHER DEFECTS.
  2. ALL REINFORCING STEEL SHALL BE SET IN ACCORDANCE WITH THE REINFORCING SCHEDULE.
  3. ALL REINFORCING STEEL SHALL BE SET IN ACCORDANCE WITH THE REINFORCING SCHEDULE.
  4. ALL REINFORCING STEEL SHALL BE SET IN ACCORDANCE WITH THE REINFORCING SCHEDULE.
  5. ALL REINFORCING STEEL SHALL BE SET IN ACCORDANCE WITH THE REINFORCING SCHEDULE.
  6. ALL REINFORCING STEEL SHALL BE SET IN ACCORDANCE WITH THE REINFORCING SCHEDULE.



**FOUNDATION PLAN**  
SCALE: 1/4" = 1'-0"

HEATED AREA = 2206 S.F.  
COVERED AREA = 261 S.F.  
GARAGE AREA = 474 S.F.



PLAN #2206 3204 GLENCAIRN CT  
A NEW SPEC HOME BY  
MAGRUDER HOMES  
DATE: JAN.2020  
SHEET  
**A2**  
OF 2  
\*KISSINGER DRAFTING & DESIGN\*  
3010 EAST VILLA MARIA RD.  
BRYAN, TEXAS 77803 (979) 868-3846

