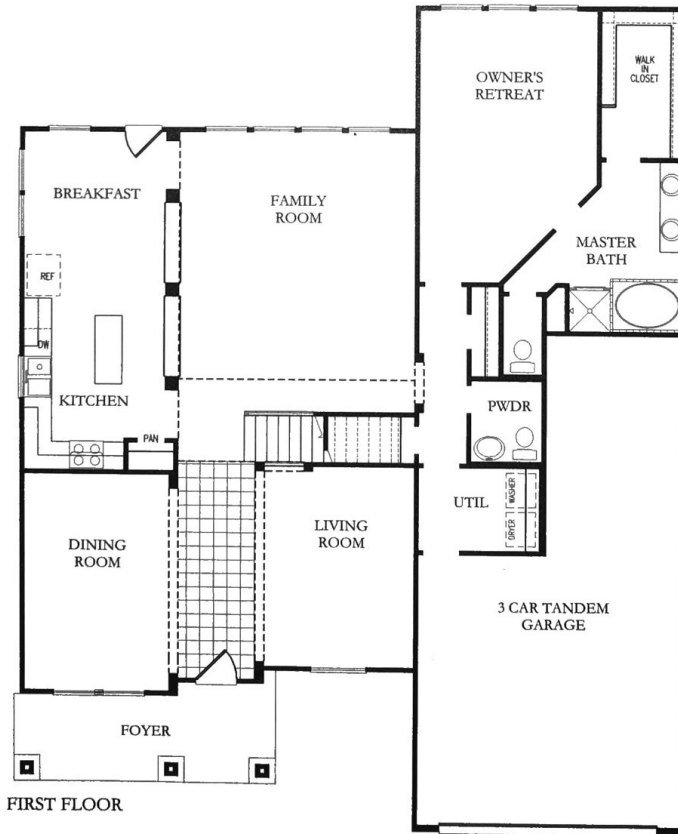
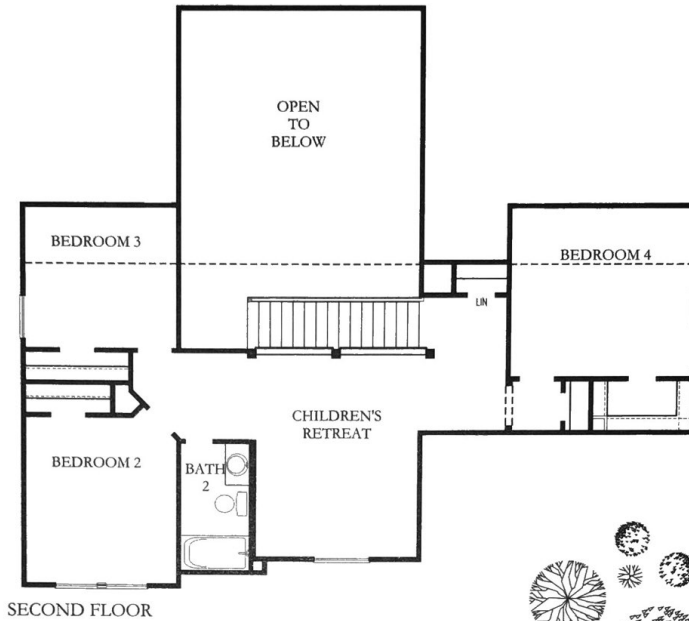




# FLOORPLAN

## THE MOLLY



10/03/08  
2576h1\_Opt1

# DavidWeekleyHomes.com



# FACTS & FEATURES

# PEACE OF MIND

## EXTERIOR SPECIALTIES

### Facade (per elevation)

- Custom exterior color program and PPG custom paint program
- American made brick from Acme, Boral, or Hanson
- Stone from Acme or Boral
- James Hardie Color Plus siding and trim
- GAF Timberline Natural Shadow lifetime shingles

### Front Amenities

- Mahogany front door (solid or with glass insert)
- Kwikset Dakota front door handleset
- Kwikset Signature Series exterior deadbolts with Smart Key technology
- Teiber LED doorbell
- Wayne Dalton 5140 series insulated garage door
  - decorative handles
  - pinch resistant
  - multiple styles to choose from
- Genie ReliaG 800 series 1/2hp garage door opener (per door)
- Genie wireless garage door exterior keypad
- Progress Lighting coach lights with CFL Bulbs
- Seamless, aluminum front gutters with 3' corner wraps
- Custom plant and tree program (per developer)
- Sprayed on polymer front porch coating

## INTERIOR SPECIALTIES

### Trim, Doors, & Hardware

- Crown moulding at entry, dining, formal living, and owner's retreat
- Oversized 4 1/4" baseboards and 3 1/4" casing throughout home
- Seasonal pull down rods at Master Closet
- Raised panel smooth doors
- Kwikset Cove knobs
- Privacy locks on owner's retreat and all baths

### Wiring and Electrical

- Structured wiring homerun panel
- Custom structured wiring package (per community)
- Combination smoke and carbon monoxide detectors
- Eaton/Cutler Hammer whole home surge protector
- Eaton/Cutler Hammer electrical load center
- 1/2 hot outlet at family and owner's retreat (for lamps)
- Dimmer switch at dining fixture
- Childproof electrical outlets
- Arc-Fault outlets
- Blocked and wired for ceiling fan in family and all bedrooms

### Lighting & Ceiling Fans

- Progress Lighting Designer Series light package
- Progress Lighting vanity light fixtures with CFL bulbs
- Progress Lighting recess cans with CFL bulbs
- Progress Lighting ceiling mount fixtures with CFL bulbs
- Progress Lighting Energy Star rated fluorescent lighting (per plan)
- Energy Star rated ceiling fan in family and owner's retreat

### Flooring

- Scotchguard protection (100% 6,6 Nylon) carpet
- Carpenter 3/8" EnviroStep pad (5 lb)
- Tiled entry, kitchen/breakfast, utility and all baths
  - up to 20"x20" ceramic tile

## KITCHEN

- Timberlake Tahoe maple cabinets
  - 42" tall uppers with crown moulding
  - concealed hinges and live corners
- GE clean steel appliance package
  - self-cleaning gas range with extra large oven and TrueTemp system
  - tall tub, built-in dishwasher with electronic controls, Energy Star rated
  - Spacemaker 1.5 cu.ft. over-the-range microwave oven
- 3cm granite countertops
- Tiled backsplash (up to 20"x20" ceramic tile)
- Stainless steel drop-in sink
- Moen Camerist faucet with side sprayer
- Water filtration faucet
- Air gap (per municipality)

### Additional Connections

- Gas line to kitchen and utility
- Whirlaway 1/3 hp disposal
- Water line to refrigerator (refrigerator not included)
- Pantera reverse osmosis drinking water filtration system

## BATHS

### Owner's Bath

- Timberlake Tahoe maple cabinets
  - 34 1/2" tall base cabinets
  - medicine and head knockers (per plan)
- Cultured marble vanity tops with oversized built-in sinks
  - multiple colors to choose from
- Moen Eva centerset faucets and tub/shower fixtures
- Moen Mason 24" towel bar and paper holder
- Framed mirror
- Tiled tub and shower surround (up to 20" x 20" ceramic tile)
- Tiled shower floor (per plan)
- 80" tall, fully framed shower enclosure (includes grout guard)
- Royal soaker tub
- Gerber Viper elongated commode

### Powder Bath (per plan)

- Gerber Logan Square pedestal vanity sink
- Moen Eva centerset faucet
- Moen Mason 24" towel bar and paper holder
- Framed mirror
- Gerber Viper elongated commode

### Secondary Bath(s)

- Timberlake Tahoe maple cabinets
  - 31 1/2" tall base cabinets
  - medicine and head knockers (per plan)
- Cultured marble vanity top(s) with oversized built-in sink(s)
  - multiple colors to choose from
- Moen Eva centerset faucet(s) and shower fixture
- Moen Mason 24" towel bar and paper holder
- 42" tall mirror with polished edges
- Tiled shower surround (up to 20" x 20" ceramic tile)
- Sterling Performa tub
- Gerber Viper elongated commode

# David Weekley Homes

David Weekley Homes. Features subject to change without notice. Advanced Framing, Level B. Expires 12/31/2012.  
Valid in: Imperial Oaks 60, Grand Mission 50/55, Pine Forest Green, Bridgeland 50, Pine Forest Landing, Lakeland Heights Bridgeland 42/50, Fieldstone  
Prices, plans, dimensions, features, specifications, materials, and availability of homes or communities are subject to change without notice or obligation.  
Illustrations are artist's depictions only and may differ from completed improvements. Copyright © 2012 David Weekley Homes - All Rights Reserved. Revised 06/29/2012.



## FACTS & FEATURES CONT.

### HOME BUYING EXPERIENCE

- Tour the "Behind Our Walls" display to see valued construction techniques first-hand
- Attend Preview Night to learn about our Design Center experience, before your home purchase
- Homeowner Portfolio defines David Weekley processes
- Personal Builder Program with scheduled meetings and weekly updates
- Personalized design appointments with professional, degreed Designers
- Hundreds of pre-priced selections to choose from
- Care and Maintenance guide given after closing

### YOUR ENERGY EFFICIENT HOME

#### Nationally Recognized Programs

- Energy Triple Crown Builder: *Environments for Living*, the Department of Energy's *Builders Challenge*, and *Build America*
- All homes Platinum level *Environments for Living* with energy usage GUARANTEE
- Home Energy Rating System (HERS), as used by the Department of Energy, conducted on every home by *Energy Sense*
- Envergy Saver Lighting Package with a minimum 80% CFL bulbs

### Innovative Construction Practices

- Advanced framing with 2x6 exterior walls to allow for thicker insulation, creating a quieter, more energy efficient home
- Vinyl framed, low E2 double pane, high performance windows that reject 70% of heat

### Heating and Cooling

- Air conditioning ducts are tested to exceed 2010 *Energy Star* and Department of Energy *Builders Challenge* standards
- Lennox 15 SEER Air Conditioning System
- Honeywell programmable thermostat
- 95% Efficient furnaces with variable speed motors that help with humidity control
- Jump ducts in secondary bedrooms to balance hot and cold temperatures
- Radiant barrier decking for a cooler attic

### Air Tight

- Walls are tested for air leakage to exceed 2010 *Energy Star* and Department of Energy *Builders Challenge* standards
- DOW Super TUFF-R sheathing to resist water and air penetration
- DOW Sill Seal between slab and exterior plate acts as a gasket to minimize air and water infiltration from under outside walls

### Insulation

- R-21 insulated exterior wall systems
- R-19 paperless batt insulation on sloped ceilings
- R-38 paperless blown insulation in ceilings

### INSPECTIONS & TESTING ON EVERY HOME

- 14 inspections in addition to those required by the city/county
- Engineered foundations per community and foundations are inspected three times: prior to pour, at pour, and after cable stress
- Burgess Construction Consultants perform detailed, independent code inspections prior to sheetrock and prior to closing
- Infrared scan to identify hidden moisture or energy efficiency issues affecting your home
- Final plumbing inspection with sewer video to check for blockages, and a 100 PSI pressure test and 39-point visual inspection to check for leaks or other water intrusion issues

### LIVING IN YOUR HEALTHY GREEN HOME

- Water barrier for tubs and showers
  - HardieBacker in all water contact areas
  - Anti-fracture membrane used at all seams and nails
- Water resistant barrier at window sills
- Taexx in-wall pest defense system
- Borate treatment on frame (up to 2' from slab) to help prevent termites and other wood boring insects
- Specially designed rot resistant exterior door jambs
- Pleated media air filters to catch pollen and mold spores (MERV 11)
- Fresh air system and microwave vented to outside for improved indoor air quality
- Formaldehyde free fiberglass batt insulation
- Pittsburgh Paint Low VOC (Volatile Organic Compound) wall paint
- Exterior paint with mildicides designed specifically for the Houston climate
- Moen temperature regulating shower valves
- Water Sense commodes, shower heads, and vanity faucets
- Bradford White natural gas water heater (.62 Energy Star)
- Flowguard Gold corrosion resistant plumbing

### YOUR LOW COST OF OWNERSHIP

#### David Weekley Home Warranty

- Centralized in-house warranty with a personal Warranty Service Representative
- 10-year structural warranty; 2-year warranty on portions of your home's major mechanicals, 1-year limited warranty on defects and workmanship

#### Builder Partner Warranties

- James Hardie products come with a 30-year limited, non-prorated manufacturer's warranty on siding and 15-year manufacturer's warranty on trim, fascia, and soffit
- Matched Lennox heating and air conditioning products come with a 5-year manufacturer's warranty on all parts, 20-year manufacturer's warranty on heat exchanger
- All Moen faucets come with a lifetime, manufacturer's warranty
- Lifetime mechanical and finish manufacturer's warranty on all *Kwikset* products
- Eaton/Cutler Hammer whole home surge protector comes with \$75,000 connected equipment manufacturer's warranty

## David Weekley Homes

David Weekley Homes. Features subject to change without notice. Advanced Framing, Level B. Expires 12/31/2012.

Valid in: Imperial Oaks 60, Grand Mission 50/55, Pine Forest Green, Bridgeland 50, Pine Forest Landing, Lakeland Heights Bridgeland 42/50, Silver Ranch, Fieldstone, Waterhaven, Grand Cay Harbour. Prices, plans, dimensions, features, specifications, materials, and availability of homes or communities are subject to change without notice or obligation. Illustrations are artist's depictions only and may differ from completed improvements. Copyright © 2012 David Weekley Homes - All Rights Reserved. Revised 12/29/2011.

