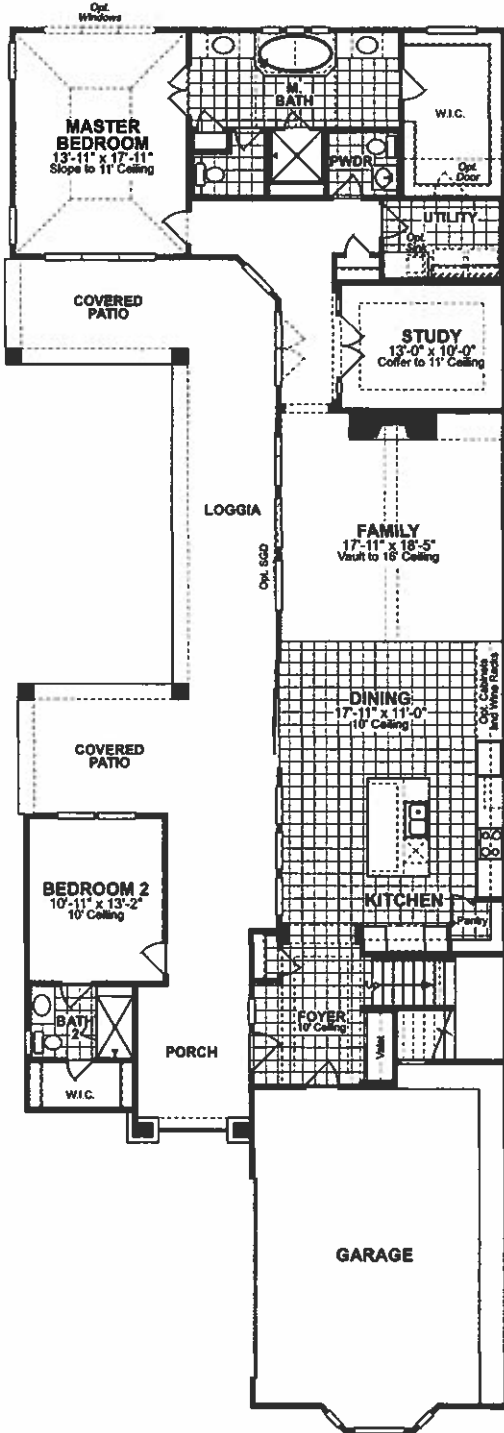
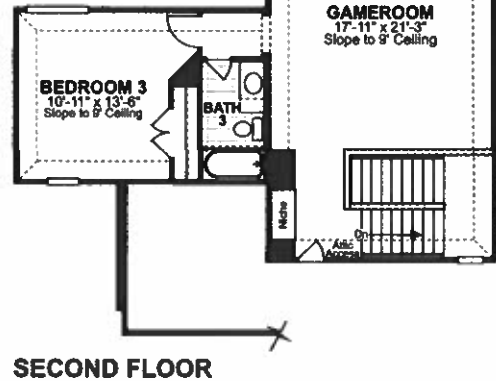
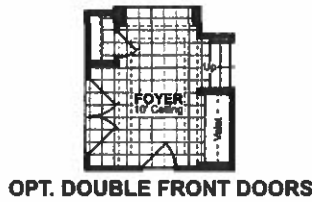
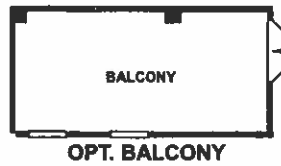
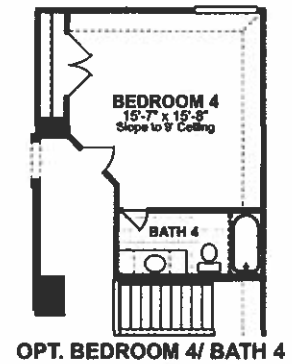
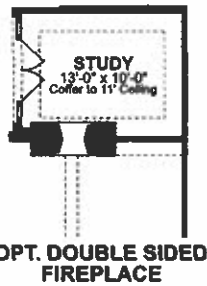


## Verdi



FIRST FLOOR


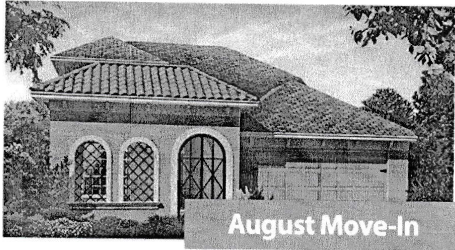


**RYLAND HOMES®**  
ryland.com



THE WOODLANDS - TIMARRON PATIO

# Move-In Ready Homes

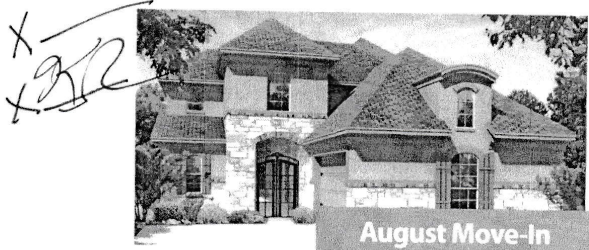



### Falla C

26 Sundown Ridge Place • 3 w/study/3.5/2 • 2,993 sq. ft.

Stunning Falla home. Large outdoor living is the jewel of this plan. Enter via portico to the covered patio which leads to the foyer. Private study just off the front foyer. Master suite has been enhanced by a truly luxurious bath along with an elongated walk in closet. The entertainers kitchen has an adjoining dining area as well as an expansive walk in pantry and other gourmet appointments. A trip upstairs reveals a central loft and two secondary bedrooms.

Was ~~\$551,442~~ Now \$ \_\_\_\_\_



### Verdi B

22 Sundown Ridge • 3 w/study/3.5/2 • 3,159 sq. ft.

Patio home in the gated community of Timarron Lakes in The Woodlands at Creekside Park. 2 story luxury patio home with master, study & guest suite downstairs. Gameroom & guest room upstairs. This home features a guest suite detached from the home with full bath. Super open kitchen to interact with guests in dining & family room. Rich kitchen with stainless steel appliances & granite countertops Full sod & sprinkler system. Nice side courtyard for an outdoor pool or rose garden.

Was ~~\$561,230~~ Now \$ \_\_\_\_\_

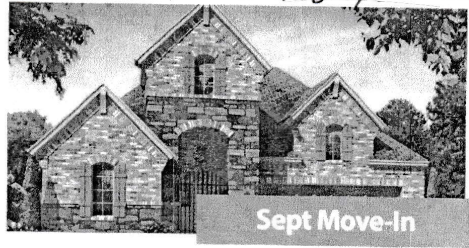


### Bellini A

30 Sundown Ridge • 3 w/study/3.5/2 • 2,905 sq. ft.

Popular Bellini plan. Immense architectural design which features barrel vault ceiling at master, coffer ceiling at study and vaults throughout. Rotunda at foyer to greet you. Casita detached from home and a second guest side inside. Wood flooring, granite countertops, stainless steel appliances, full sod and sprinkler, Extended lanai to hug the home. Side courtyard for your pool or that rose garden with fountains.

Was ~~\$530,026~~ Now \$ \_\_\_\_\_



### Puccini A

18 Sundown Ridge Place • 3/3.5/2 • 2,617 sq. ft.

Gorgeous Patio home in the beautiful gated community of Timarron Lakes in The Woodlands at Creekside Park. This home features a guest suite detached from the home with full bath. Super open kitchen to interact with guests in dining and family room. Rich kitchen with stainless steel appliances, granite countertops and wood floors. Full sod and sprinkler system. Nice side courtyard for an outdoor pool or a nice rose garden.

Was ~~\$482,215~~ Now \$ \_\_\_\_\_

For more information contact **Alejandra Torres** at 281-658-0975.



In the Houston division, prices, plans, elevations and specifications are subject to change without notice. Photographs are for illustrative purposes only. Quick Move-In home special pricing cannot be combined with any other Ryland Homes paid incentive. "Was Price" is the sum of the current base price, options, upgrades and lot premium. Quick Move-In homes are subject to prior sale. Square footage shown is approximate. Ryland Homes is an ENERGY STAR® partner. ENERGY STAR® certified new homes must meet strict energy efficient guidelines set by the United States Environmental Protection Agency (EPA). For more information visit [www.energystar.gov](http://www.energystar.gov). "Houston's Best" awards are selected from entries submitted by members of the Greater Houston Builders Association, and are judged anonymously by a panel of industry professionals from around the nation. BUILDER magazine named Ryland Homes the 2012 "Fastest-Growing Public Homebuilder" in the May 2013 issue of Builder 100. See sales Counselor for details on available promotions, restrictions and for a complete list of HouseWORKS® features. © 2013 The Ryland Group, Inc.