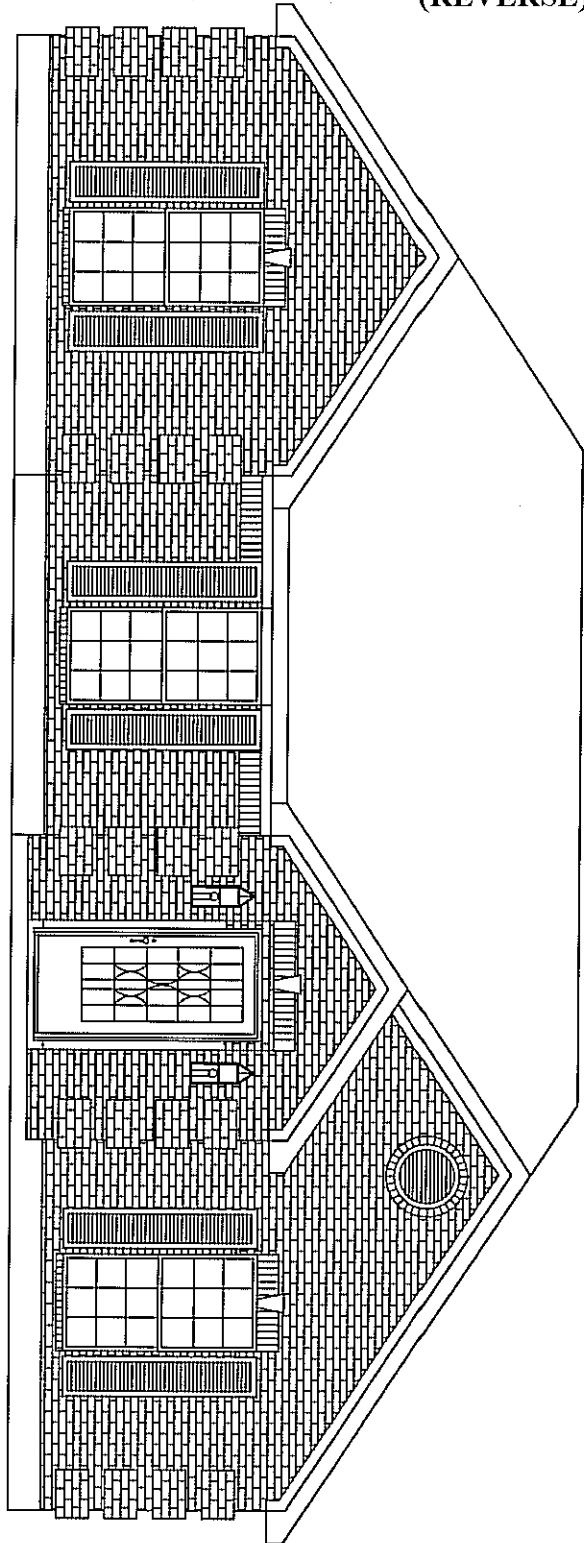


317/417 PLAN "K"

\$2000 PREMIUM



1. Add 2'8" RH, 1/2 Lite to Breakfast
2. Reverse Swing of Hall Door
- ~~3. 2 Elongated Commodes~~
4. 42" wide tub in master bath

Electric:

110 above Fireplace

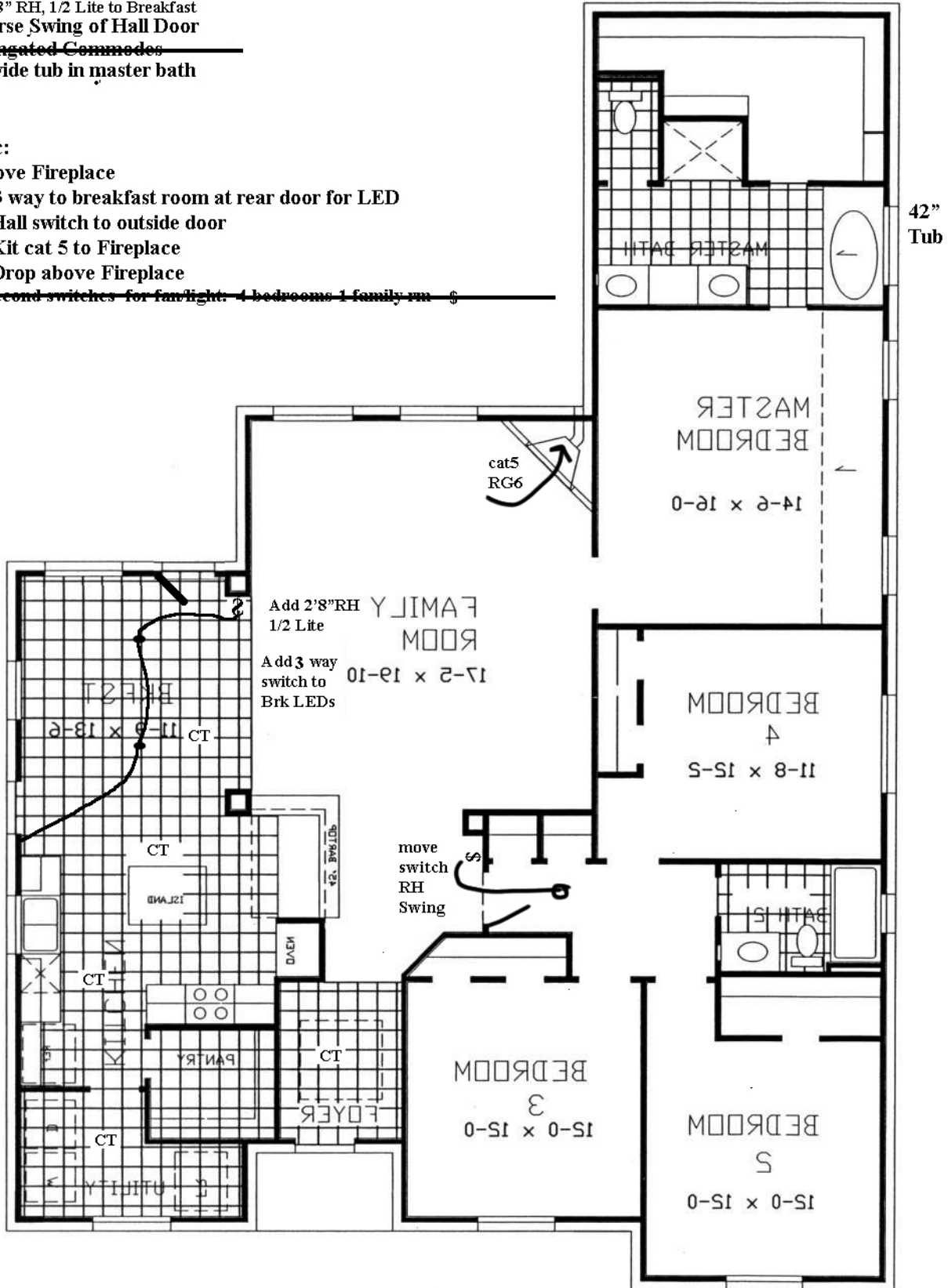
Add a 3 way to breakfast room at rear door for LED

Move Hall switch to outside door

Move Kit cat 5 to Fireplace

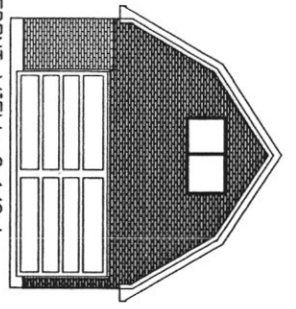
Cable Drop above Fireplace

~~Add 5 second switches for fan light. 4 bedrooms 1 family rm~~

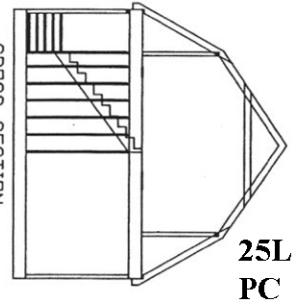


CT Ceramic Tile Kit/Brk, Utility, Foyer

417 PLAN
2170 SQ. FT.

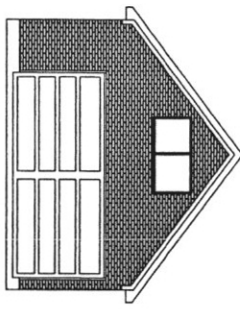


FRONT VIEW- 2 1/2 L AND 4 CAR GARAGE WITH BARN STORAGE BRICKED GABLE

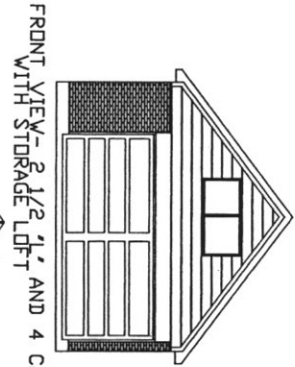


CROSS SECTION BARN STORAGE

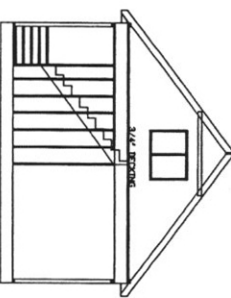
25L
PC



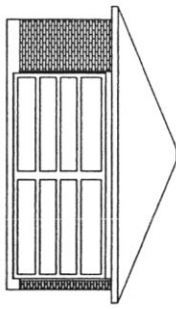
FRONT VIEW- 2 1/2 L AND 4 CAR GARAGE WITH STORAGE LOFT BRICKED GABLE



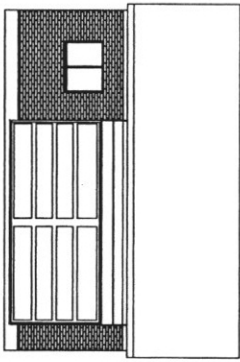
FRONT VIEW- 2 1/2 L AND 4 CAR WITH STORAGE LOFT



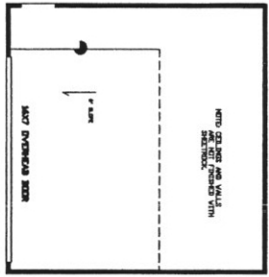
CROSS SECTION- STORAGE LOFT



FRONT VIEW- 2 CAR GARAGE

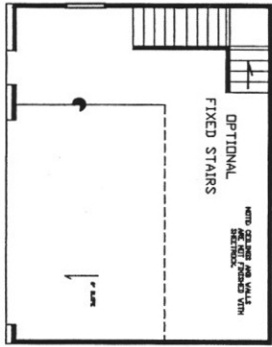


FRONT VIEW- 2 1/2 CAR GARAGE WITH STORAGE LOFT



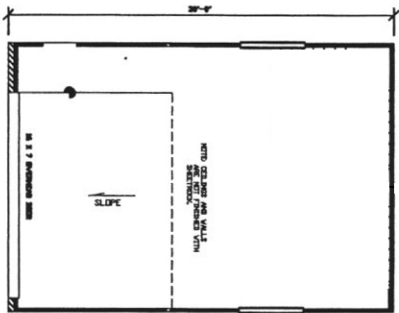
2 CAR GARAGE STANDARD

- STORAGE LOFT _____ N/A
- FIXED STAIRS _____ N/A
- BRICKED GABLE FRONT N/A
- 8X7 REAR GARAGE DOOR \$500
- BARN STORAGE LOFT _____ N/A
- ~20'X20' PORTE CUSHIER \$5000
- STORAGE OVER PORTE CUSHIER N/A



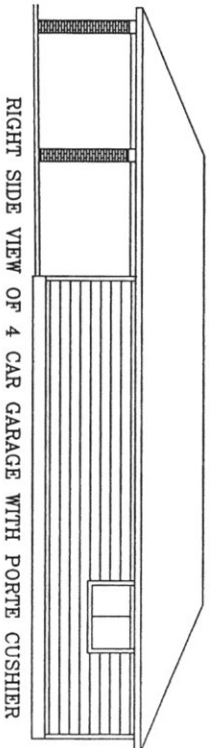
2 1/2 CAR GARAGE \$3000

- STORAGE LOFT \$3500
- FIXED STAIRS \$500
- BRICKED GABLE FRONT N/A
- 8X7 REAR GARAGE DOOR \$500
- BARN STORAGE LOFT \$5000
- ~20'X20' PORTE CUSHIER \$5000

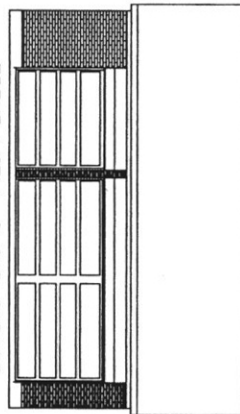


2 1/2 CAR "L" GARAGE (2530) \$4500

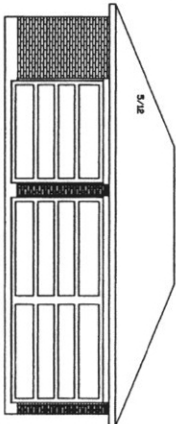
- STORAGE LOFT \$3500
- FIXED STAIRS \$500
- BRICKED GABLE FRONT \$800
- 8X7 REAR GARAGE DOOR \$500
- BARN STORAGE LOFT \$5500
- ~20'X20' PORTE CUSHIER \$5500
- STORAGE OVER PORTE CUSHIER \$3500



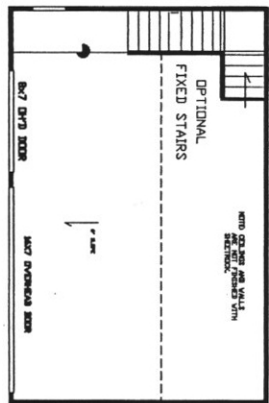
RIGHT SIDE VIEW OF 4 CAR GARAGE WITH PORTE CUSHIER



FRONT VIEW- 3 CAR GARAGE WITH STORAGE LOFT

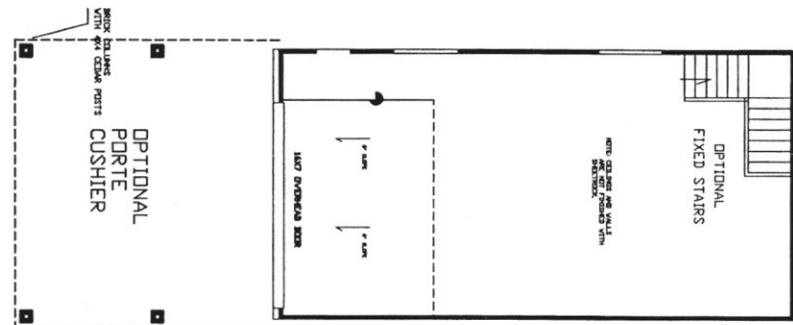


FRONT VIEW- 3 CAR GARAGE



3 CAR GARAGE \$4500

- STORAGE LOFT \$4000
- FIXED STAIRS \$500
- BRICKED GABLE FRONT _____
- 8X7 REAR GARAGE DOOR \$500
- BARN STORAGE LOFT \$5500
- ~20'X20' PORTE CUSHIER \$5000
- ~30'X20' PORTE CUSHIER \$6500



4 CAR GARAGE \$6500

- STORAGE LOFT \$5000
- FIXED STAIRS \$500
- BRICKED GABLE FRONT \$800
- 8X7 REAR GARAGE DOOR \$500
- BARN STORAGE LOFT \$7000
- ~20'X20' PORTE CUSHIER \$5000
- STORAGE OVER PORTE CUSHIER \$3500

CERVELLE



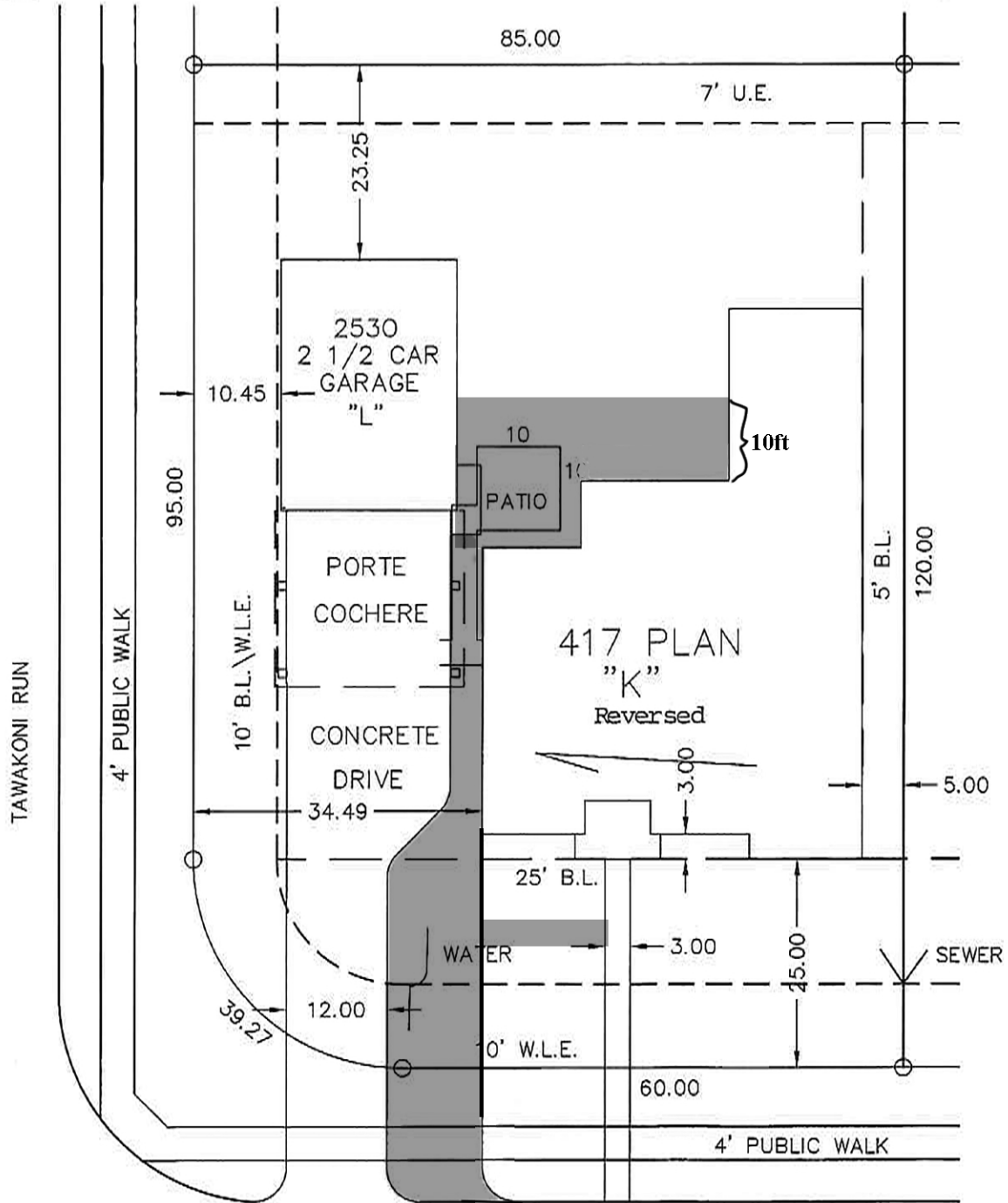
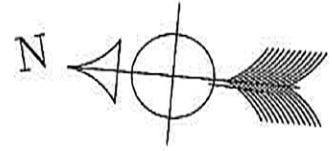
HOMES

207 E. EDGEWOOD
FRIENDSWOOD, TEXAS
77546

LOT AREA = 10,066 SQ.FT.

SCALE: 1" = 20'

Diagram 4



GRAPEVINE BEND

6603 GRAPEVINE BEND
LOT 1 BLOCK 4 SECTION 5
LAKELAND