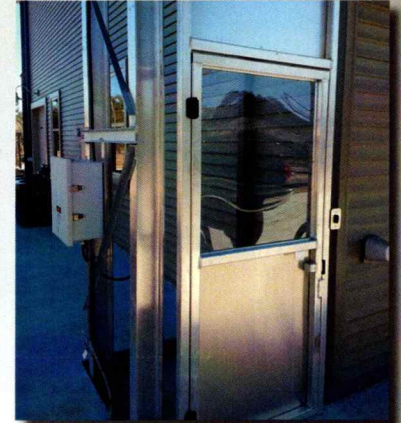
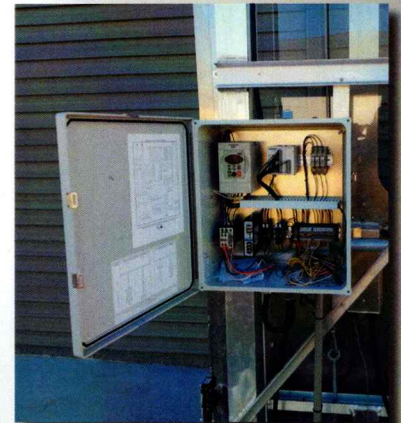


SPECIFICATIONS

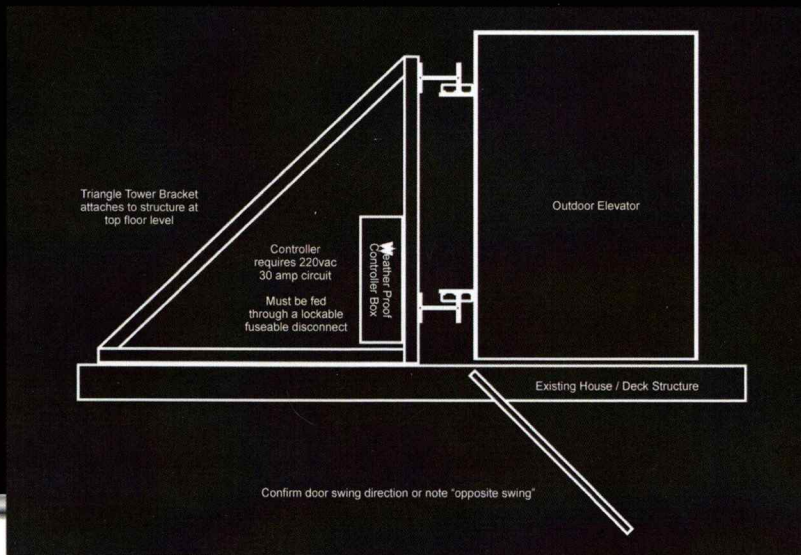
- 95% aluminum construction
- Standard platform 32" w x 48" d
- 500 lb capacity
- 24 fpm travel speed
- Soft start/stop PLC controller
- Constant pressure operation
- Industrial duty gearmotor
- Winding drum drivetrain
- Type "A" instant safeties
- Safety underpan stops lift if there is an obstruction below
- Meets ASME A18.1 code
- Plug N' Play wiring makes installation quick and easy
- Standard finish: mill finish aluminum
- Optional finish: industrial marine paint coating with choice of over 10 colors



Self-closing doors and gates are equipped with safety interlocks to keep doors locked when the lift is away from the floor level.



PLC industrial grade controller ensures a smooth ride and reliable operation.



Trademark and Patent Pending

DARE TO COMPARE:

	SAFETY COMPLIANCE	SPEED	DURABILITY	COST
THE OUTDOOR ELEVATOR	ASME A18.1 Elevator Code for Wheelchair & Platform Lifts	24 FPM*	Marine Grade Aluminum Carriage & Tower, Industrial Gearmotor & Controls	Very competitive when travel is over 7 feet. High quality parts & construction.
TYPICAL WHEELCHAIR LIFT	ASME A18.1 Elevator Code for Wheelchair & Platform Lifts	8-20 FPM* (depending on model)	Painted steel construction, lite duty drivetrains, vulnerable to floods	Equal to or more expensive than The Outdoor Elevator.
CARGO/ BEACH LIFT	Not safe for passengers.	6-12 FPM* (depending on model)	Aluminum Carriage & Tower. Virtually no safety features.	Not safe for passengers, virtually no safety features.

*Feet Per Minute



3605 N Davis Highway
 Pensacola, FL 32503
 ph: 877-770-5862
 www.PrecisionLiftIndustries.com