

STATE OF TEXAS
COUNTY OF FORT BEND

ME, ANN ARUNDEL FARMS, LTD., A TEXAS LIMITED PARTNERSHIP, ACTING BY AND THROUGH LENNAR HOMES OF TEXAS LAND AND CONSTRUCTION, L.P., A TEXAS LIMITED PARTNERSHIP (OWNER), ATTORNEY-IN-FACT FOR LENNAR TEXAS HOLDING COMPANY, A TEXAS CORPORATION, ITS GENERAL PARTNER, BEING THE OWNER OF THE FOLLOWING DESCRIBED PROPERTY IN FORT BEND COUNTY, TEXAS:

LAKEMONT SHORES SEC 2 AMENDING PLAT NO 1 CONTAINS 15.316 ACRES WHICH IS LOCATED IN THE WILLIAM STANLEY SURVEY, ABSTRACT 599, AND THE I. & G.N.R. CO. SURVEY, ABSTRACT 363, IN FORT BEND COUNTY, TEXAS AND BEING ALL OF LAKEMONT SHORES SEC 2 RECORDED IN PLAT NO. 20090103 OF THE FORT BEND COUNTY PLAT RECORDS, FORT BEND COUNTY, TEXAS.

FURTHER, OWNERS HEREBY CERTIFY THAT THIS AMENDING PLAT DOES NOT ATTEMPT TO ALTER, AMEND OR REMOVE ANY COVENANTS OR RESTRICTIONS. HE FURTHER CERTIFY THAT NO PORTION OF THE PRECEDING PLAT WAS LIMITED BY DEED RESTRICTION TO RESIDENTIAL USE FOR MORE THAN TWO (2) RESIDENTIAL UNITS PER LOT.

IN TESTIMONY WHEREOF, ANN ARUNDEL FARMS, LTD., ACTING BY AND THROUGH LENNAR HOMES OF TEXAS LAND AND CONSTRUCTION, L.P., HAS CAUSED THESE PRESENTS TO BE SIGNED BY JOHN W. HAMMOND, VICE PRESIDENT, OR MARILENE L. GAFARICO, SECRETARY, AUTHORIZED AGENT OF LENNAR TEXAS HOLDING COMPANY, ITS GENERAL PARTNER, THEREAFTER AUTHORIZED THIS 23RD DAY OF FEBRUARY 2010.

ANN ARUNDEL FARMS, LTD.
A TEXAS LIMITED PARTNERSHIP
BY: LENNAR HOMES OF TEXAS LAND AND CONSTRUCTION, L.P.
A TEXAS LIMITED PARTNERSHIP
D/B/A FRIENDSWOOD DEVELOPMENT COMPANY
AN ATTORNEY-IN-FACT
BY: LENNAR TEXAS HOLDING COMPANY
A TEXAS CORPORATION, ITS GENERAL PARTNER
BY: JOHN W. HAMMOND, VICE PRESIDENT, OR
MARILENE L. GAFARICO, SECRETARY, AUTHORIZED AGENT

STATE OF TEXAS
COUNTY OF FORT BEND

BEFORE ME, THE UNDERSIGNED AUTHORITY, ON THIS DAY PERSONALLY APPEARED Monica D. Vebra (Signature) of LENNAR TEXAS HOLDING COMPANY, AND TO ME, THE SAID AUTHORITY HAVE SUBSCRIBED TO THE FOREGOING INSTRUMENT AND ACKNOWLEDGED TO ME THAT HE EXECUTED THE SAME FOR THE PURPOSES AND CONDUCTIONS THEREIN EXPRESSED, AND IN THE CAPACITY THEREIN AND HEREIN SET OUT, AND AS THE ACT AND DEED OF SAID CORPORATION.

GIVEN UNDER MY HAND AND SEAL OF OFFICE, THIS 23RD DAY OF FEBRUARY, 2010.

Monica D. Vebra (Signature)
NOTARY PUBLIC IN AND FOR THE STATE OF TEXAS
MY COMMISSION EXPIRES 02-23-2012

I, KEITH W. MONROE, A REGISTERED PROFESSIONAL LAND SURVEYOR, HEREBY CERTIFY THAT THE FOLLOWING CHANGES WERE NECESSARY TO ELIMINATE ERRORS WHICH APPEAR ON THE PLAT OF LAKEMONT SHORES SEC 2 RECORDED IN PLAT NO. 20090103 IN FORT BEND COUNTY, TEXAS.

THE REASON FOR THIS AMENDING PLAT IS TO CHANGE BLOCK 4 NORTH OF TRANQUIL SHORES DRIVE TO BLOCK 4 TO AVOID BLOCK DUPLICATION.

Keith W. Monroe (Signature)
KEITH W. MONROE, R.S.P.S., L.S.
REGISTERED PROFESSIONAL LAND SURVEYOR
TEXAS REGISTRATION NO. 4797

I, MARILENE L. GAFARICO, A PROFESSIONAL ENGINEER, LICENSED IN THE STATE OF TEXAS DO HEREBY CERTIFY THIS PLAT MEETS ALL REQUIREMENTS OF FORT BEND COUNTY, TO THE BEST OF MY KNOWLEDGE.

Marlene L. Gafarico (Signature)
MARILENE L. GAFARICO, P.E.
LICENSED PROFESSIONAL ENGINEER
TEXAS LICENSE NO. 90316

THIS IS TO CERTIFY THAT THE HOUSTON PLANNING COMMISSION OF THE CITY OF HOUSTON, TEXAS HAS APPROVED THIS PLAT AND SUBDIVISION OF LAKEMONT SHORES SEC 2 AMENDING PLAT NO 1 IN CONFORMANCE WITH THE LAWS OF THE STATE OF TEXAS AND THE ORDINANCES OF THE CITY OF HOUSTON AS SHOWN HEREON AND AUTHORIZED THE RECORDING OF THIS PLAT, THIS 15TH DAY OF FEBRUARY, 2010.

BY: Carol Auld Lewis (Signature)
CAROL A. LEWIS, PH.D., CHAIR OR
MARK A. KILPATRICK, VICE CHAIRMAN

I, D. JESSE HEGGERER, FORT BEND COUNTY ENGINEER, DO HEREBY CERTIFY THAT THE PLAT OF THIS SUBDIVISION COMPLIES WITH ALL OF THE EXISTING RULES AND REGULATIONS OF THIS OFFICE AS ADOPTED BY THE FORT BEND COUNTY COMMISSIONER'S COURT, HOWEVER, CERTIFICATION IS HEREBY GIVEN AS TO THE EFFECT OF CHANGES FROM THIS SUBDIVISION FROM THE INTERFERING DRAINAGE ARTERY OR PARENT STREAM OR ON ANY OTHER AREA OR SUBDIVISION WITHIN THE WATERSHED.

D. Jesse Heggerer (Signature)
D. JESSE HEGGERER
FORT BEND COUNTY ENGINEER

APPROVED BY THE COMMISSIONERS' COURT OF FORT BEND COUNTY, TEXAS, THIS 23RD DAY OF FEBRUARY, 2010.

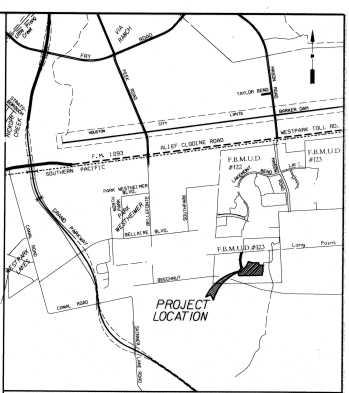
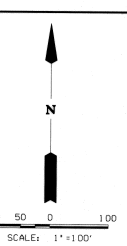
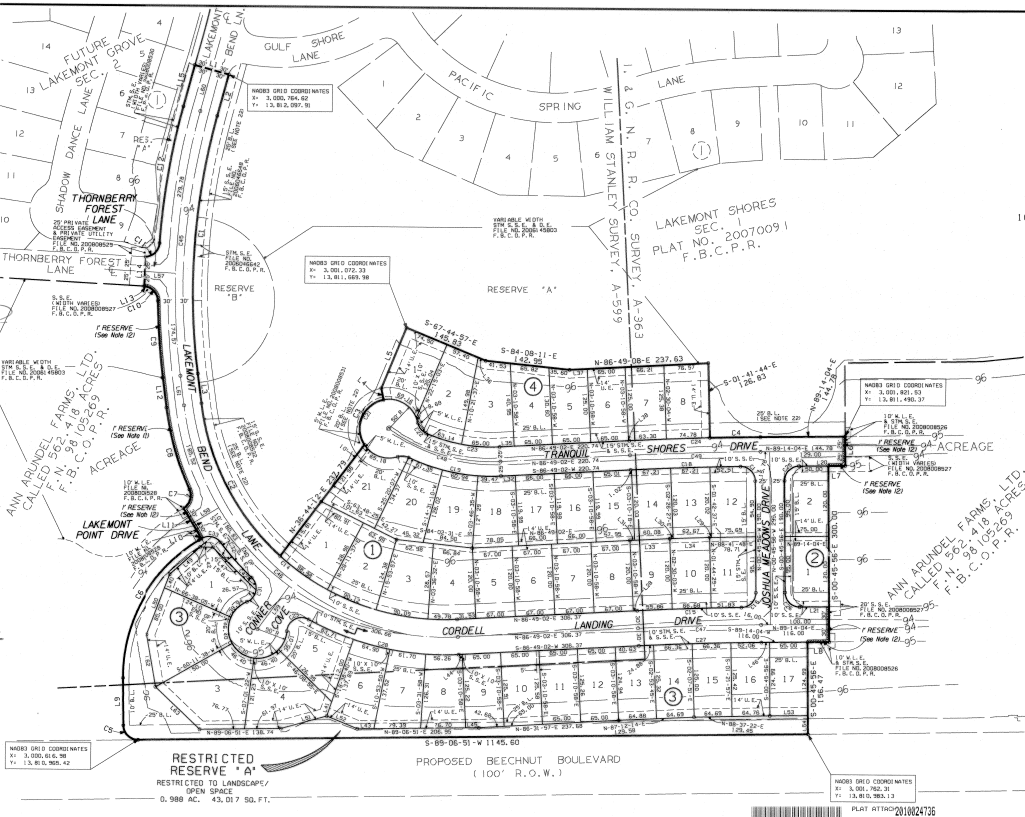
Robert E. Hebert (Signature)
ROBERT E. HERBERT
COUNTY JUDGE

Jan Patth (Signature)
JAN PATTH
COMMISSIONER, PRECINCT 4

I, DRANK WILSON, COUNTY CLERK IN AND FOR FORT BEND COUNTY, HEREBY CERTIFY THAT THE FOREGOING INSTRUMENT WITH ITS COMPLETE SET OF AUTHENTICATION WAS FILED FOR RECORDATION IN MY OFFICE ON March 11th 2010, AT 10:57 O'CLOCK, AM IN PLAT NUMBER 20100203 OF THE PLAT RECORDS OF FORT BEND COUNTY, TEXAS.

WITNESS MY HAND AND SEAL OF OFFICE, AT RICHMOND, TEXAS, THE DAY AND DATE LAST ABOVE WRITTEN.

Drank Wilson (Signature)
DRANK WILSON, COUNTY CLERK,
FORT BEND COUNTY, TEXAS



LINE TABLE

LINE	BEGINNING	ENDPOINT	BEARING	DISTANCE
1	12.811, 986.53	12.811, 986.53		0.00
2	12.811, 986.53	12.811, 986.53		0.00
3	12.811, 986.53	12.811, 986.53		0.00
4	12.811, 986.53	12.811, 986.53		0.00
5	12.811, 986.53	12.811, 986.53		0.00
6	12.811, 986.53	12.811, 986.53		0.00
7	12.811, 986.53	12.811, 986.53		0.00
8	12.811, 986.53	12.811, 986.53		0.00
9	12.811, 986.53	12.811, 986.53		0.00
10	12.811, 986.53	12.811, 986.53		0.00
11	12.811, 986.53	12.811, 986.53		0.00
12	12.811, 986.53	12.811, 986.53		0.00
13	12.811, 986.53	12.811, 986.53		0.00
14	12.811, 986.53	12.811, 986.53		0.00
15	12.811, 986.53	12.811, 986.53		0.00
16	12.811, 986.53	12.811, 986.53		0.00
17	12.811, 986.53	12.811, 986.53		0.00
18	12.811, 986.53	12.811, 986.53		0.00
19	12.811, 986.53	12.811, 986.53		0.00
20	12.811, 986.53	12.811, 986.53		0.00
21	12.811, 986.53	12.811, 986.53		0.00
22	12.811, 986.53	12.811, 986.53		0.00
23	12.811, 986.53	12.811, 986.53		0.00
24	12.811, 986.53	12.811, 986.53		0.00
25	12.811, 986.53	12.811, 986.53		0.00
26	12.811, 986.53	12.811, 986.53		0.00
27	12.811, 986.53	12.811, 986.53		0.00
28	12.811, 986.53	12.811, 986.53		0.00
29	12.811, 986.53	12.811, 986.53		0.00
30	12.811, 986.53	12.811, 986.53		0.00
31	12.811, 986.53	12.811, 986.53		0.00
32	12.811, 986.53	12.811, 986.53		0.00
33	12.811, 986.53	12.811, 986.53		0.00
34	12.811, 986.53	12.811, 986.53		0.00
35	12.811, 986.53	12.811, 986.53		0.00
36	12.811, 986.53	12.811, 986.53		0.00
37	12.811, 986.53	12.811, 986.53		0.00
38	12.811, 986.53	12.811, 986.53		0.00
39	12.811, 986.53	12.811, 986.53		0.00
40	12.811, 986.53	12.811, 986.53		0.00
41	12.811, 986.53	12.811, 986.53		0.00
42	12.811, 986.53	12.811, 986.53		0.00
43	12.811, 986.53	12.811, 986.53		0.00
44	12.811, 986.53	12.811, 986.53		0.00
45	12.811, 986.53	12.811, 986.53		0.00
46	12.811, 986.53	12.811, 986.53		0.00
47	12.811, 986.53	12.811, 986.53		0.00
48	12.811, 986.53	12.811, 986.53		0.00
49	12.811, 986.53	12.811, 986.53		0.00
50	12.811, 986.53	12.811, 986.53		0.00
51	12.811, 986.53	12.811, 986.53		0.00
52	12.811, 986.53	12.811, 986.53		0.00
53	12.811, 986.53	12.811, 986.53		0.00
54	12.811, 986.53	12.811, 986.53		0.00
55	12.811, 986.53	12.811, 986.53		0.00
56	12.811, 986.53	12.811, 986.53		0.00
57	12.811, 986.53	12.811, 986.53		0.00
58	12.811, 986.53	12.811, 986.53		0.00
59	12.811, 986.53	12.811, 986.53		0.00
60	12.811, 986.53	12.811, 986.53		0.00
61	12.811, 986.53	12.811, 986.53		0.00
62	12.811, 986.53	12.811, 986.53		0.00
63	12.811, 986.53	12.811, 986.53		0.00
64	12.811, 986.53	12.811, 986.53		0.00
65	12.811, 986.53	12.811, 986.53		0.00
66	12.811, 986.53	12.811, 986.53		0.00
67	12.811, 986.53	12.811, 986.53		0.00
68	12.811, 986.53	12.811, 986.53		0.00
69	12.811, 986.53	12.811, 986.53		0.00
70	12.811, 986.53	12.811, 986.53		0.00
71	12.811, 986.53	12.811, 986.53		0.00
72	12.811, 986.53	12.811, 986.53		0.00
73	12.811, 986.53	12.811, 986.53		0.00
74	12.811, 986.53	12.811, 986.53		0.00
75	12.811, 986.53	12.811, 986.53		0.00
76	12.811, 986.53	12.811, 986.53		0.00
77	12.811, 986.53	12.811, 986.53		0.00
78	12.811, 986.53	12.811, 986.53		0.00
79	12.811, 986.53	12.811, 986.53		0.00
80	12.811, 986.53	12.811, 986.53		0.00
81	12.811, 986.53	12.811, 986.53		0.00
82	12.811, 986.53	12.811, 986.53		0.00
83	12.811, 986.53	12.811, 986.53		0.00
84	12.811, 986.53	12.811, 986.53		0.00
85	12.811, 986.53	12.811, 986.53		0.00
86	12.811, 986.53	12.811, 986.53		0.00
87	12.811, 986.53	12.811, 986.53		0.00
88	12.811, 986.53	12.811, 986.53		0.00
89	12.811, 986.53	12.811, 986.53		0.00
90	12.811, 986.53	12.811, 986.53		0.00
91	12.811, 986.53	12.811, 986.53		0.00
92	12.811, 986.53	12.811, 986.53		0.00
93	12.811, 986.53	12.811, 986.53		0.00
94	12.811, 986.53	12.811, 986.53		0.00
95	12.811, 986.53	12.811, 986.53		0.00
96	12.811, 986.53	12.811, 986.53		0.00
97	12.811, 986.53	12.811, 986.53		0.00
98	12.811, 986.53	12.811, 986.53		0.00
99	12.811, 986.53	12.811, 986.53		0.00
100	12.811, 986.53	12.811, 986.53		0.00

CURVE TABLE

CURVE	CHORD	CHORD BEARING	CHORD DISTANCE	CHORD BEARING	CHORD DISTANCE
1	12.811, 986.53	12.811, 986.53	12.811, 986.53	12.811, 986.53	12.811, 986.53
2	12.811, 986.53	12.811, 986.53	12.811, 986.53	12.811, 986.53	12.811, 986.53
3	12.811, 986.53	12.811, 986.53	12.811, 986.53	12.811, 986.53	12.811, 986.53
4	12.811, 986.53	12.811, 986.53	12.811, 986.53	12.811, 986.53	12.811, 986.53
5	12.811, 986.53	12.811, 986.53	12.811, 986.53	12.811, 986.53	12.811, 986.53
6	12.811, 986.53	12.811, 986.53	12.811, 986.53	12.811, 986.53	12.811, 986.53
7	12.811, 986.53	12.811, 986.53	12.811, 986.53	12.811, 986.53	12.811, 986.53
8	12.811, 986.53	12.811, 986.53	12.811, 986.53	12.811, 986.53	12.811, 986.53
9	12.811, 986.53	12.811, 986.53	12.811, 986.53	12.811, 986.53	12.811, 986.53
10	12.811, 986.53	12.811, 986.53	12.811, 986.53	12.811, 986.53	12.811, 986.53
11	12.811, 986.53	12.811, 986.53	12.811, 986.53	12.811, 986.53	12.811, 986.53
12	12.811, 986.53	12.811, 986.53	12.811, 986.53	12.811, 986.53	12.811, 986.53
13	12.811, 986.53	12.811, 986.53	12.811, 986.53	12.811, 986.53	12.811, 986.53
14	12.811, 986.53	12.811, 986.53	12.811, 986.53	12.811, 986.53	12.811, 986.53
15	12.811, 986.53	12.811, 986.53	12.811, 986.53	12.811, 986.53	12.811, 986.53
16	12.811, 986.53	12.811, 986.53	12.811, 986.53	12.811, 986.53	12.811, 986.53
17	12.811, 986.53	12.811, 986.53	12.811, 986.53	12.811, 986.53	12.811, 986.53
18	12.811, 986.53	12.811, 986.53	12.811, 986.53	12.811, 986.53	12.811, 986.53
19	12.811, 986.53	12.811, 986.53	12.811, 986.53	12.811, 986.53	12.811, 986.53
20	12.811, 986.53	12.811, 986.53	12.811, 986.53	12.811, 986.53	12.811, 986.53
21	12.811, 986.53	12.811, 986.53	12.811, 986.53	12.811, 986.53	12.811, 986.53
22	12.811, 986.53	12.811, 986.53	12.811, 986.53	12.811, 986.53	12.811, 986.53
23	12.811, 986.53	12.811, 986.53	12.811, 986.53	12.811, 986.53	12.811, 986.53
24	12.811, 986.53	12.811, 986.53	12.811, 986.53	12.811, 986.53	12.811, 986.53
25	12.811, 986.53	12.811, 986.53	12.811, 986.53	12.811, 986.53	12.811, 986.53
26	12.811, 986.53	12.811, 986.53	12.811, 986.53	12.811, 986.53	12.811, 986.53
27	12.811, 986.53	12.811, 986.53	12.811, 986.53	12.811, 986.53	12.811, 986.53
28	12.811, 986.53	12.811, 986.53	12.811, 986.53	12.811, 986.53	12.811, 986.53
29	12.811, 986.53	12.811, 986.53	12.811, 986.53	12.811, 986.53	12.811, 986.53
30	12.811, 986.53	12.811, 986.53	12.811, 986.53	12.811, 986.53	12.811, 986.53
31	12.811, 986.53	12.811, 986.53	12.811, 986.53	1	