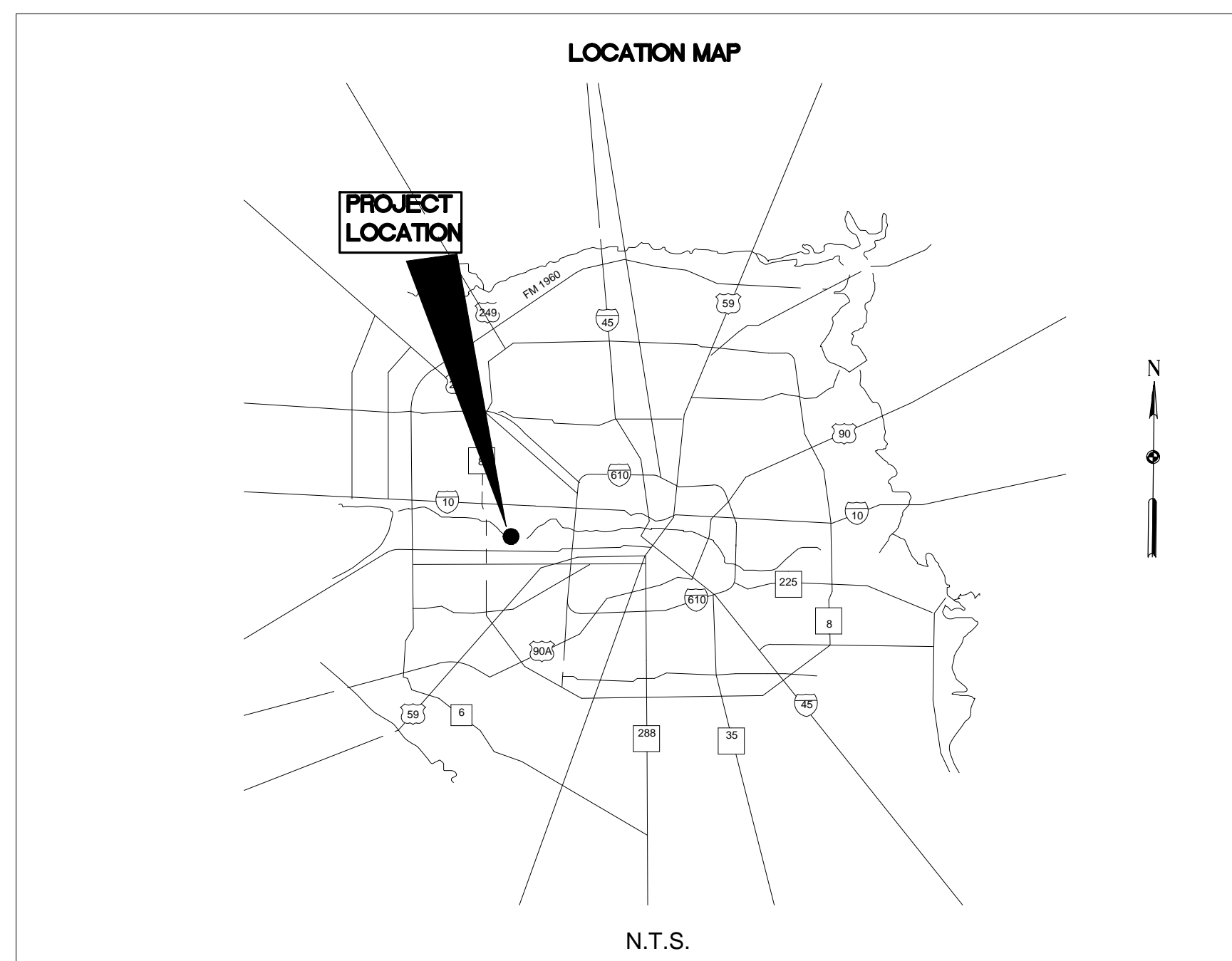


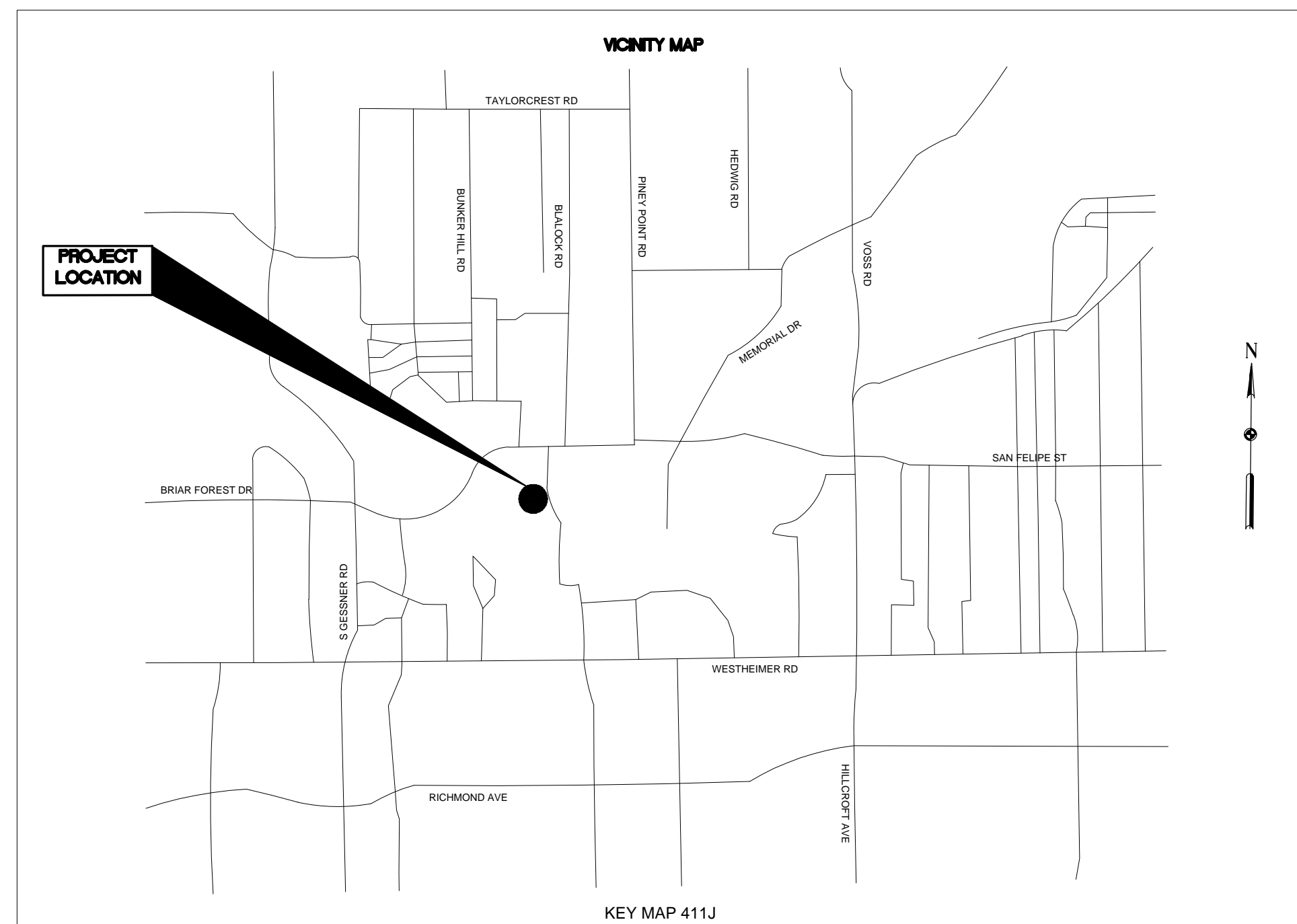
7 MEMORIAL POINT LANE SLOPE STABILIZATION SYSTEM CONSTRUCTION PLANS

SPECIFICATIONS:

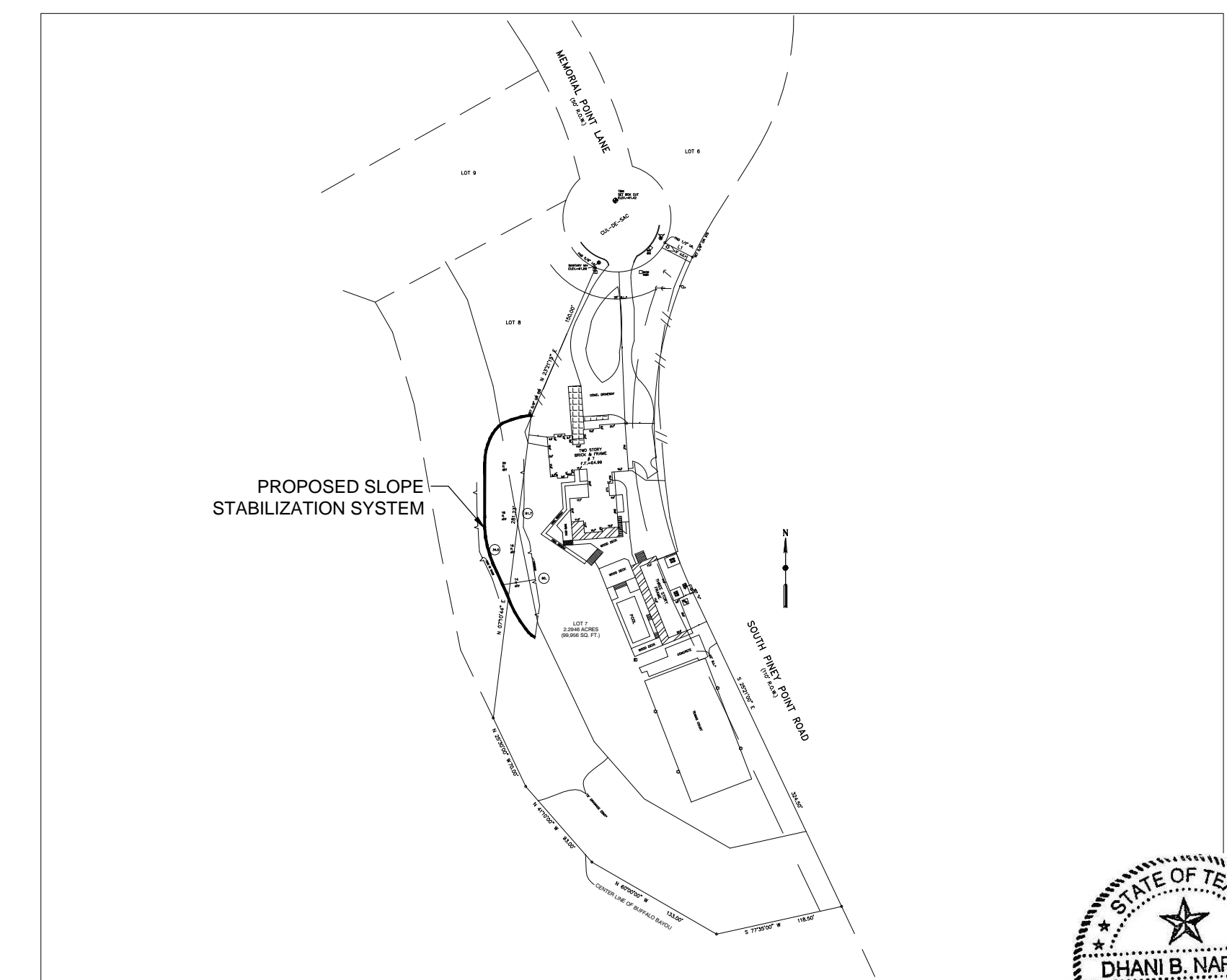
- EXISTING FABRIFORM: Contractor is not to disturb existing fabriform on the toe of the proposed wall.
- RIPRAP: Existing riprap on the slopes is to be removed, saved for future use, and utilized at the toe of the wall to protect it from erosion.
- GABIONS BASKET: Gabions shall be assembled at the site, or factory assembled, from rolled or sheet panels supplied by the manufacturer. The panel or the roll material shall be 3' wide and comprised of 12 gauge galvanized, PVC coated wire with a 3'x3' opening size. The finished dimensions of the gabion baskets shall be 3' height by 3' deep by length of the wall. The gabions shall be assembled at the jobsite as per the instructions from the manufacturer. Alternatively, the gabions can be assembled offsite and shipped to the jobsite.
- 1.5'x3' GABIONS: 1.5' X 3' gabions are required at the bottom and top of the wall.
- REINFORCEMENT: The reinforcement shall be 12 gauge, galvanized, PVC coated steel mesh with 2"x2" opening installed at elevations and lengths as per the wall front elevation. Reinforcement is to be connected with gabions as per the details on the details sheets and per the manufacturers instructions. Triple connection of reinforcement is required to the gabions. The long-term design strength required is 1900 lbs/ft. Steel mesh with 3"x3" openings is acceptable provided the contractor can show that this strength value is satisfied.
- MIRAFIX GEOGRID: A layer of Mirafix geogrid is required at the base. This layer must be completely encased in sand with no contact with the steel reinforcement.
- SPIRALS AND LACING WIRE: Spirals and lacing wire shall be 12 gauge PVC coated steel manufactured to conform to the gabion and the mattress specified herein.
- FILTER GEOTEXTILE: The filter geotextile shall be 12 oz. NW-NP with this geotextile installed as indicated on the drawings.
- STONE INFILL IN GABIONS: Crushed concrete or crushed stone is acceptable as infill in the gabions. The size of the infill stone or concrete shall be between 3 to 5 inches with most sizes being close to 4 inches.
- ENGINEERED BACKFILL: The engineered back or reinforced soil shall be sand compacted to 95% of the standard proctor. The owner shall have a laboratory test the compaction of the sand. A minimum of eight compaction tests are required.
- EROSION CONTROL: Erosion control on the 4:1 slope above the gabions is required. This is to be accomplished with geoweb infilled with topsoil and covered with a TRM. Vegetation must be established on the slopes prior to a flood event.
- TURF REINFORCEMENT MAT: The turf reinforcement mat shall be North American Green C-350 or equal.
- QUALITY CONTROL AND QUALITY ASSURANCE: The contractor and the project owner are jointly responsible for ensuring that quality control is implemented. Quality assurance is recommended but not required. Distortion or deformation of gabion baskets will not be acceptable. Its the responsibility of the wall builder to ensure that no excessive deformation does not occur.
- CONSTRUCTION PERMIT: It is recommended that the owner apply for permit from the Houston Flood Control District. In general, the city does not allow construction in waterways without a permit. Narejo Inc. will be happy to assist should a permit application is to be needed.
- EXCAVATION SUPPORT: Temporary excavation support is the responsibility of the wall builder. The owner or the engineer of record assumes no responsibility related to this.
- MEASUREMENTS: The wall builder must stake the wall using the current survey. The elevation of the base of the wall must be measured to make sure that the wall is at correct elevation.
- MAIN WALL FEATURES: The wall consists of the gabion baskets with minimum one basket (3 ft) embedment and a 4:1 slope at the crest. These main features of the wall shall not be altered. Moreover, the length of the reinforcement shall not be changed.



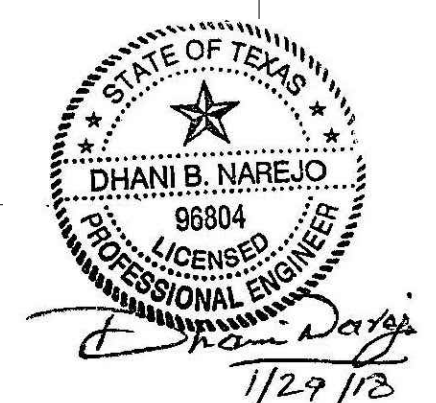
1 LOCATION MAP
SCALE: NTS



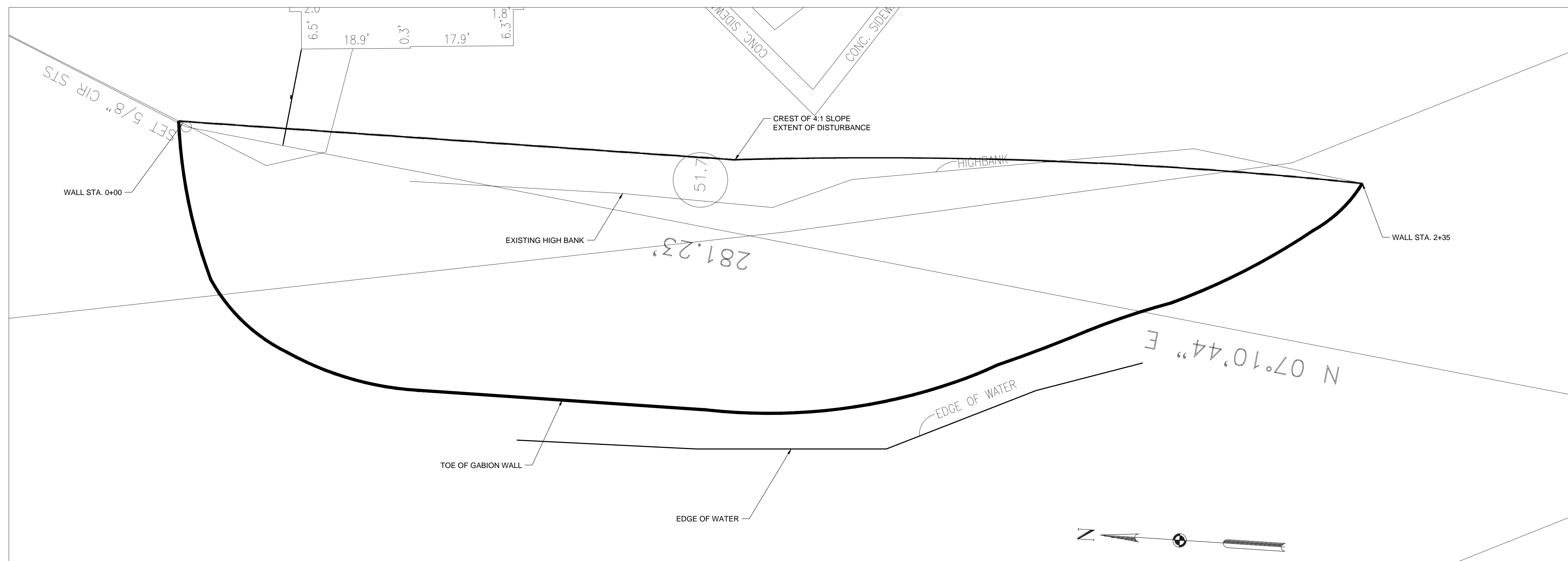
2 VICINITY MAP
SCALE: NTS



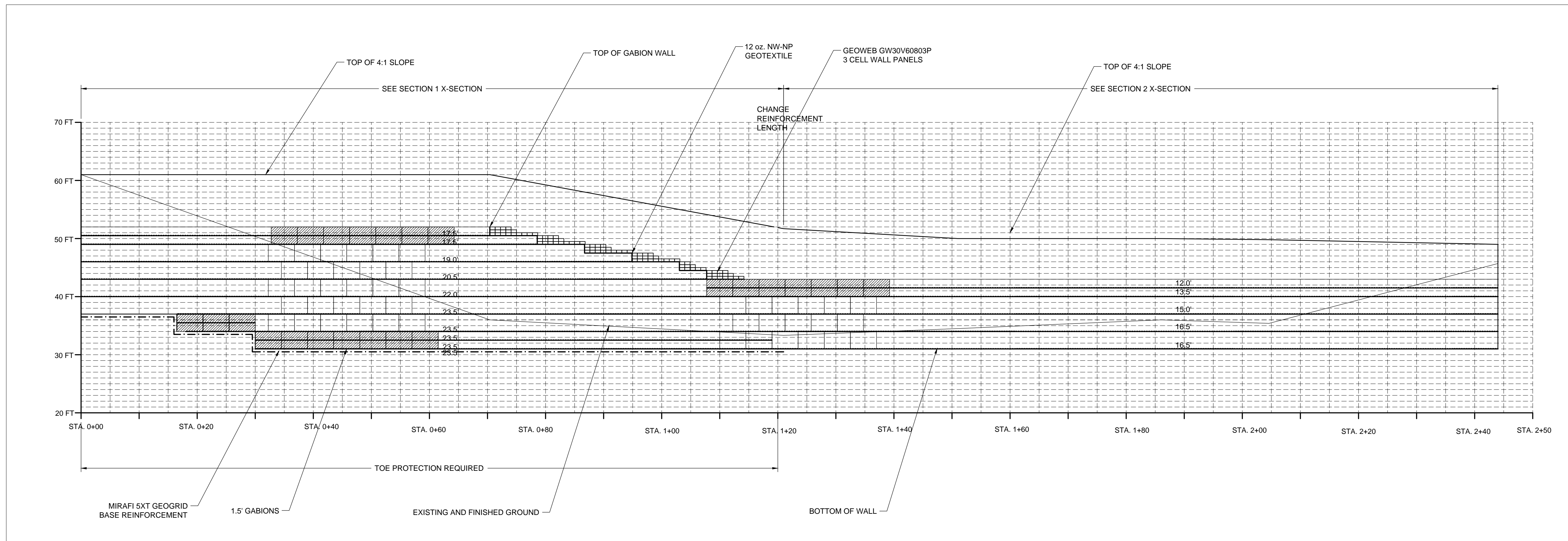
3 SITE OVERVIEW
SCALE: 1"=128'



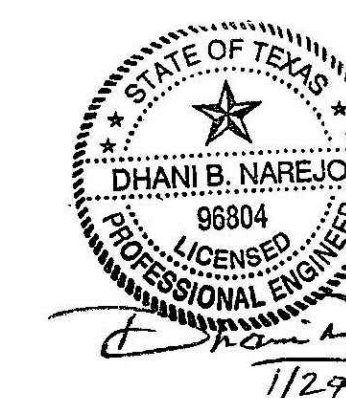
ISSUED FOR CONSTRUCTION	SHEET NO. W1	7 MEMORIAL POINT LANE HOUSTON, TX	PREPARED BY: NAREJO, INC. 5825 W SAM HOUSTON PKWY N., STE. 308 HOUSTON, TX 77041 TEL: 832-449-8882 TX. PERM NO. P-15284, TX. PE NO. 86804	REVISION	DATE	BY
				ISSUED FOR CONSTRUCTION	1/29/2018	DN
				ISSUED FOR REVIEW	1/24/2018	DN



1
2 PLAN VIEW OF THE WALL
SCALE: 1"=10'



2
2 FRONT ELEVATION OF WALL
SCALE: 1"=10'



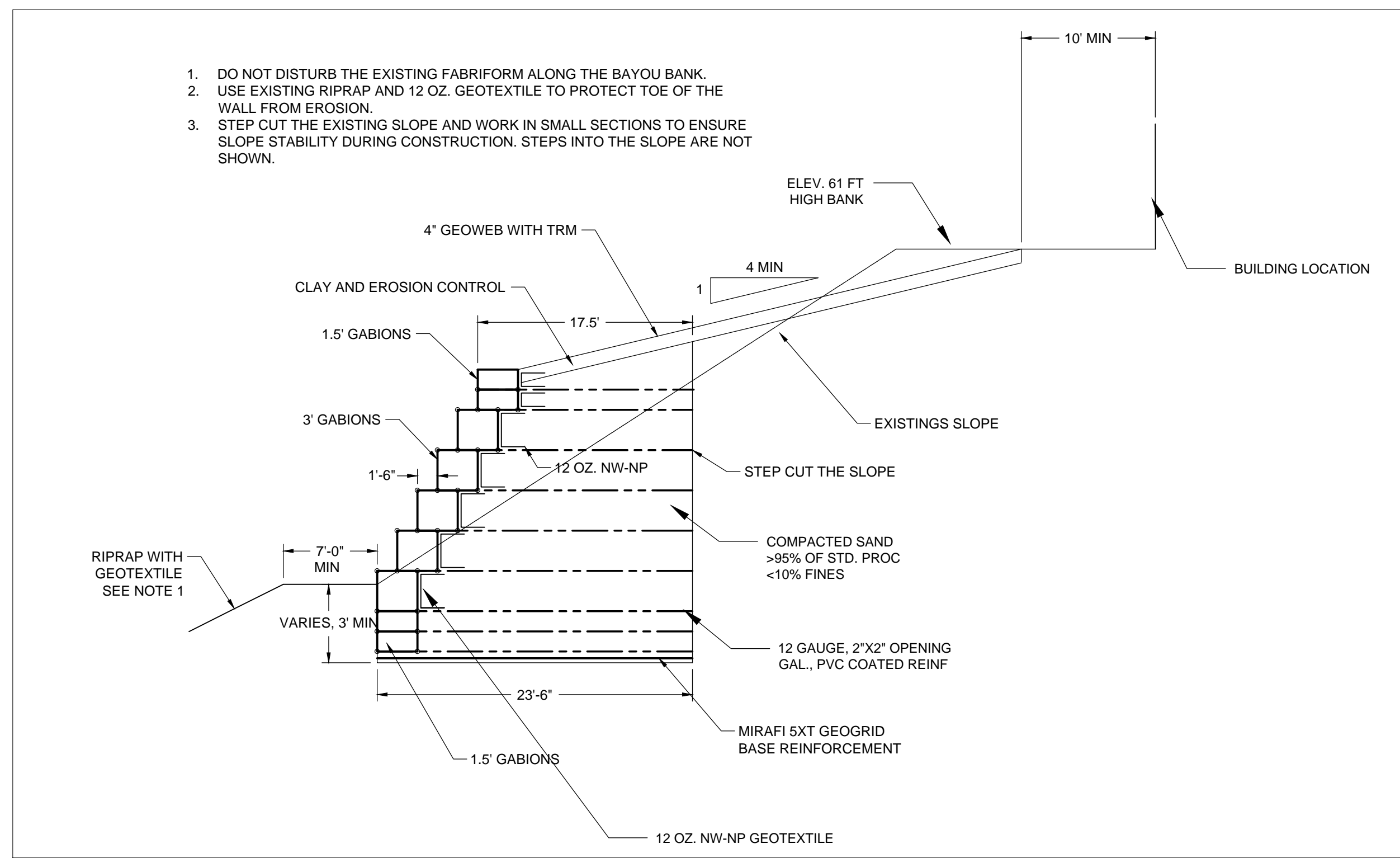
BY	DN	REVISION	DATE
DN	DN	ISSUED FOR REVIEW	1/25/2018
DN	DN	ISSUED FOR CONSTRUCTION	1/29/2018

PREPARED BY: NAREJO, INC.
5829 W SAM HOUSTON PKWY N., UNIT 308
HOUSTON, TX 77041
TEL: 832-449-8882
TX. FIRM NO. F-15284, TX. PE NO. 96804

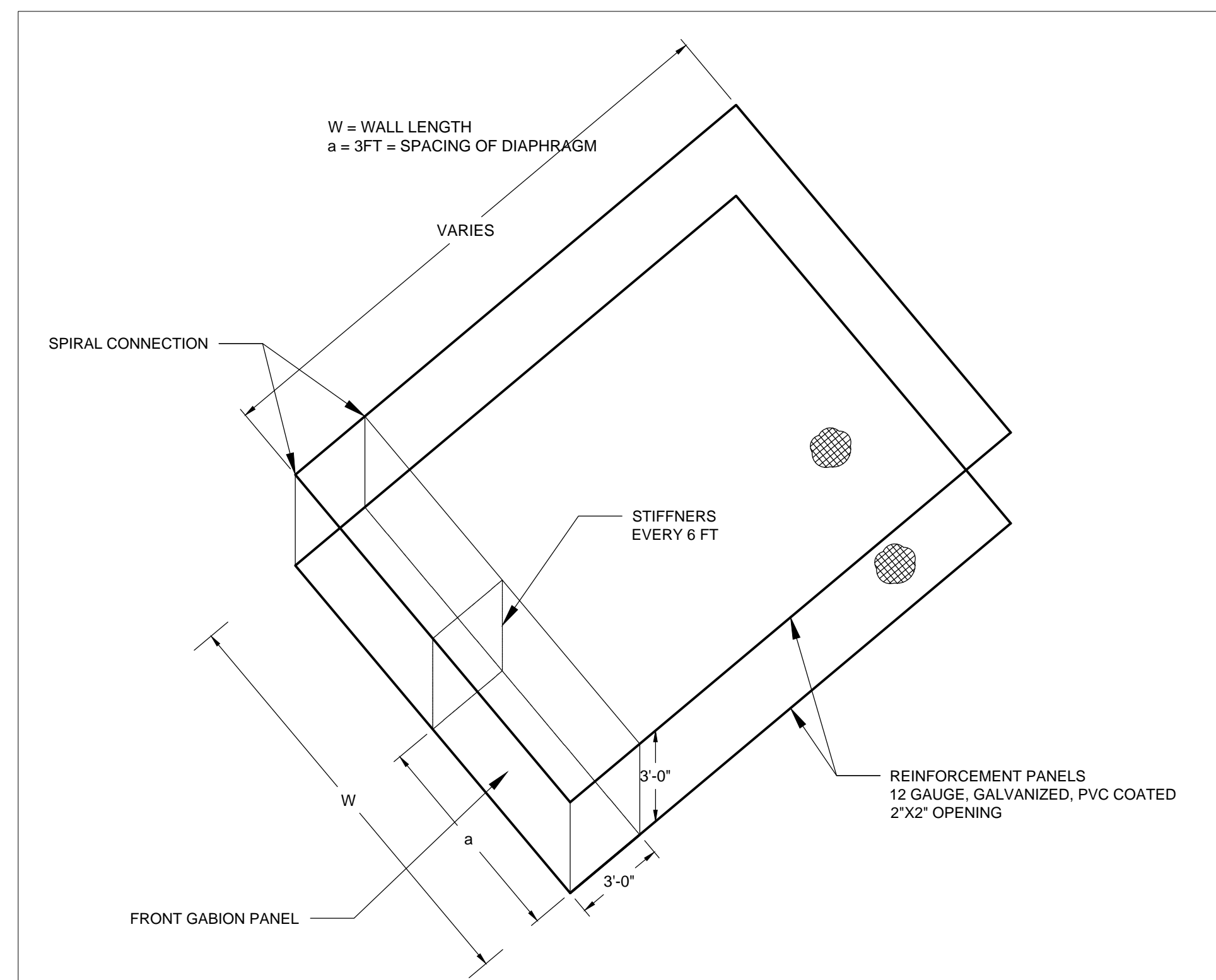
7 MEMORIAL POINT LANE
SLOPE STABILIZATION

SHEET NO. W1

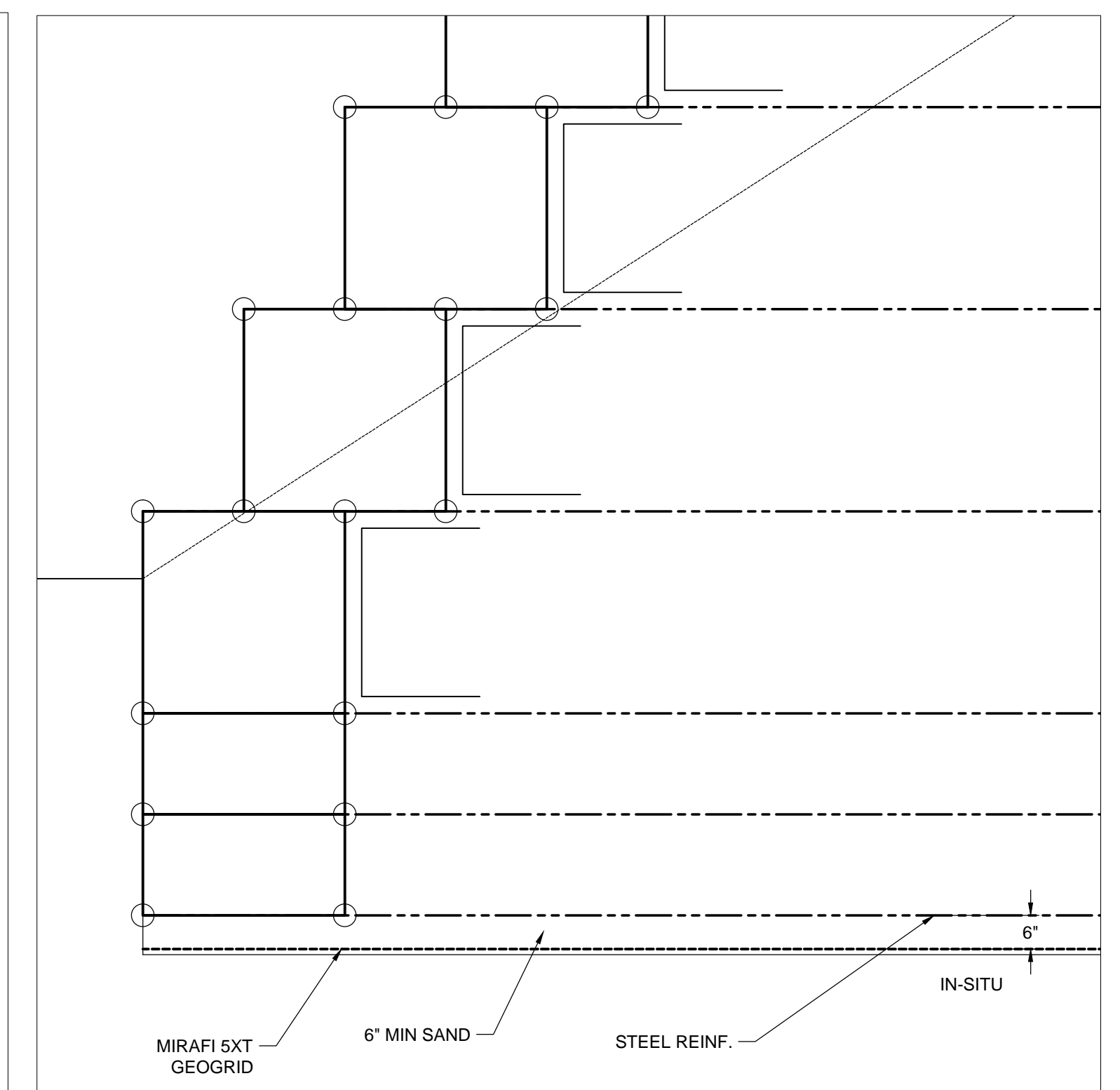
ISSUED FOR CONSTRUCTION



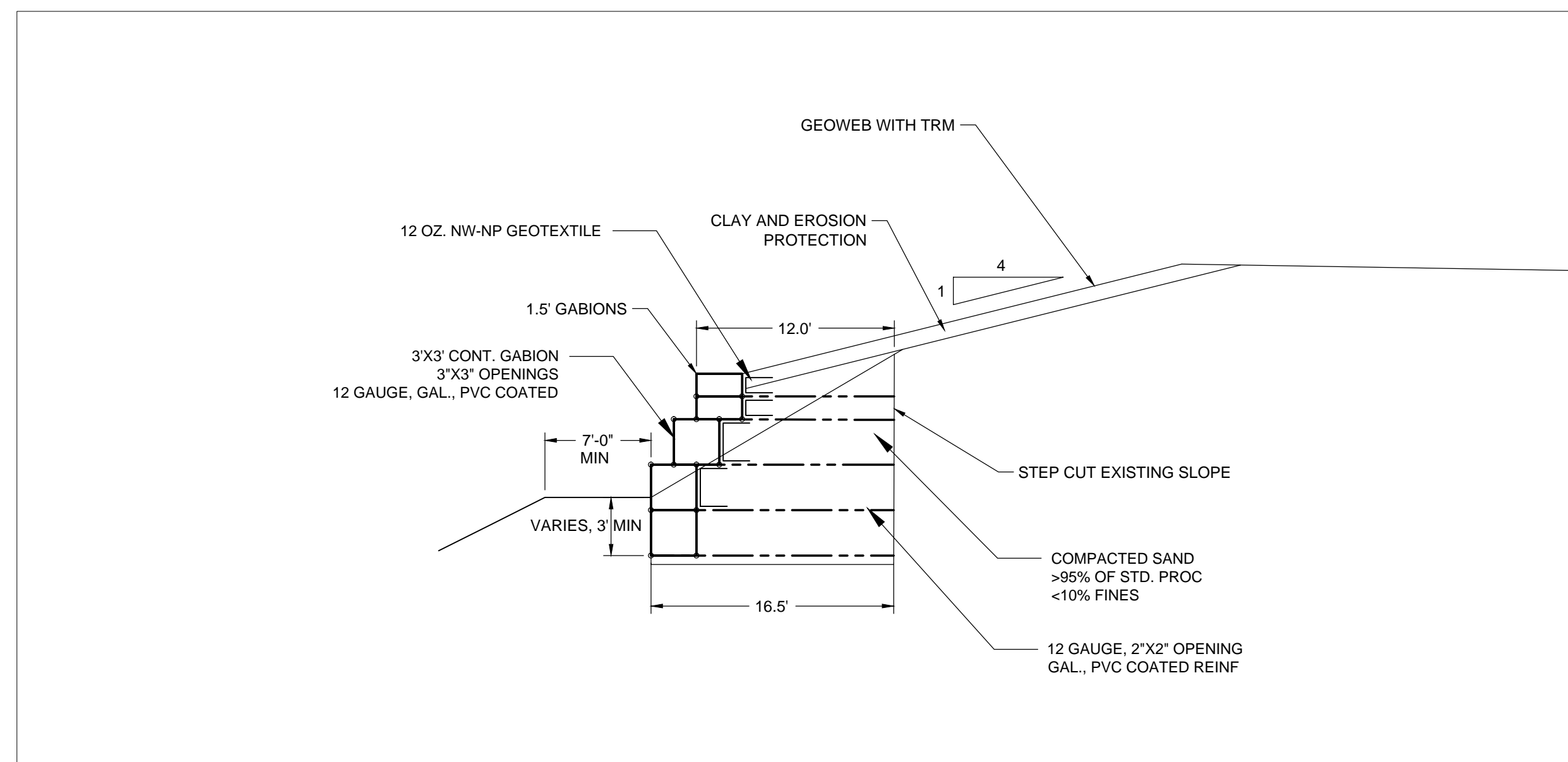
1 SECTION 1, X-SECTION PROPOSED STA. 0+70
SCALE: 1/8"=1'



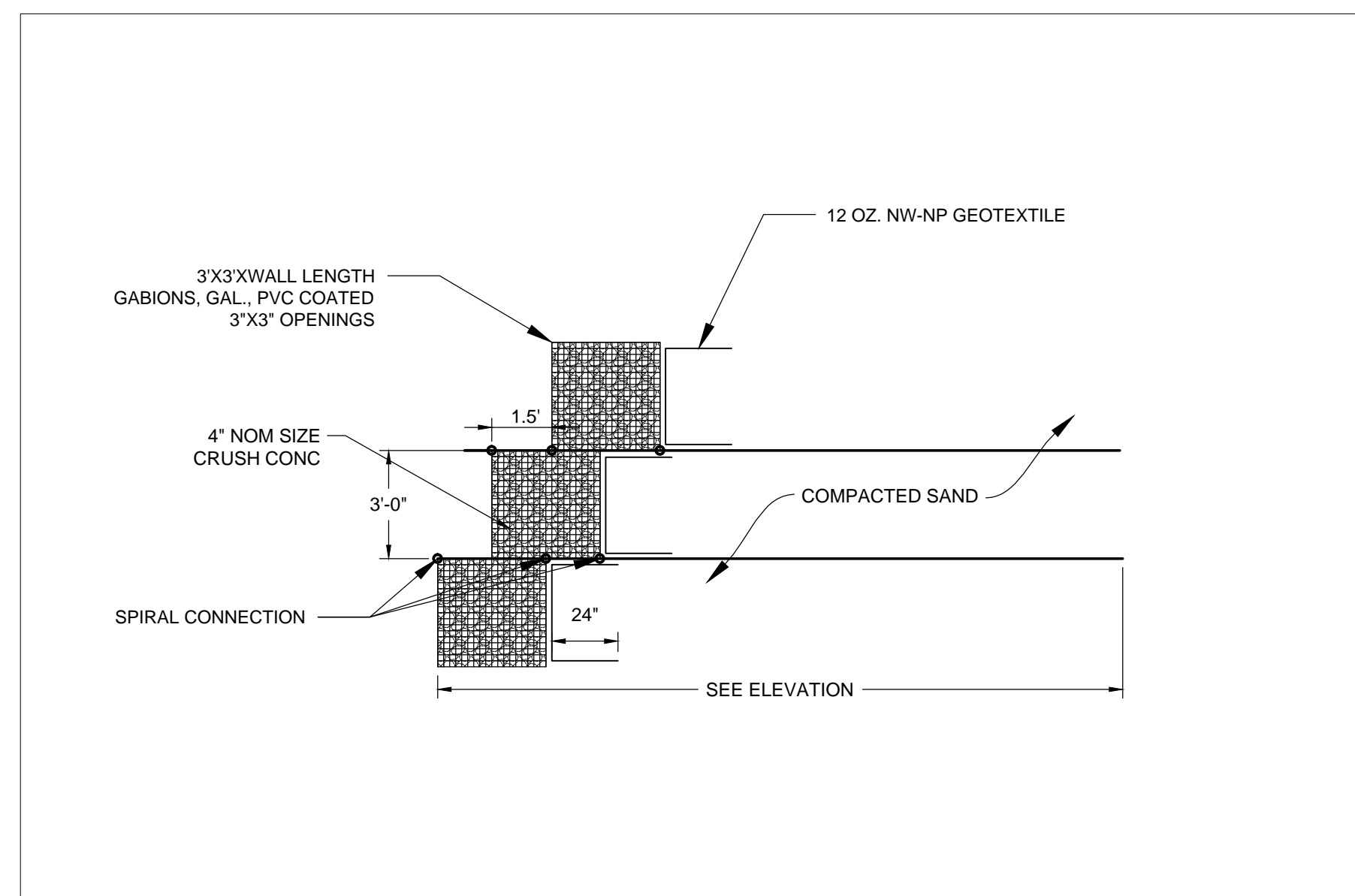
3 3' GABION TYPICAL DETAIL
SCALE: 1/4"=1'



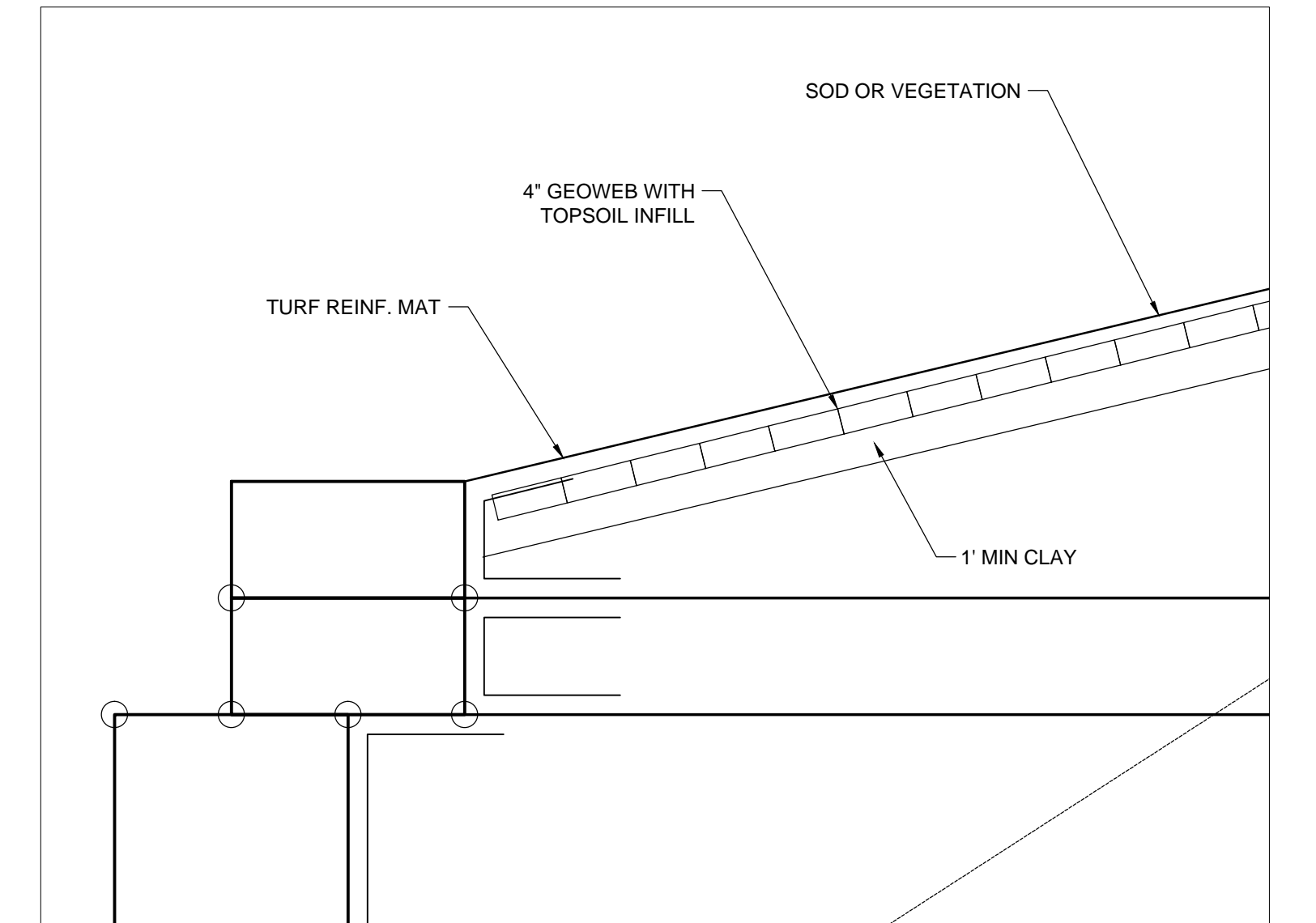
5 WALL BASE DETAIL WITH 5XT
SCALE: 1/2"=1'



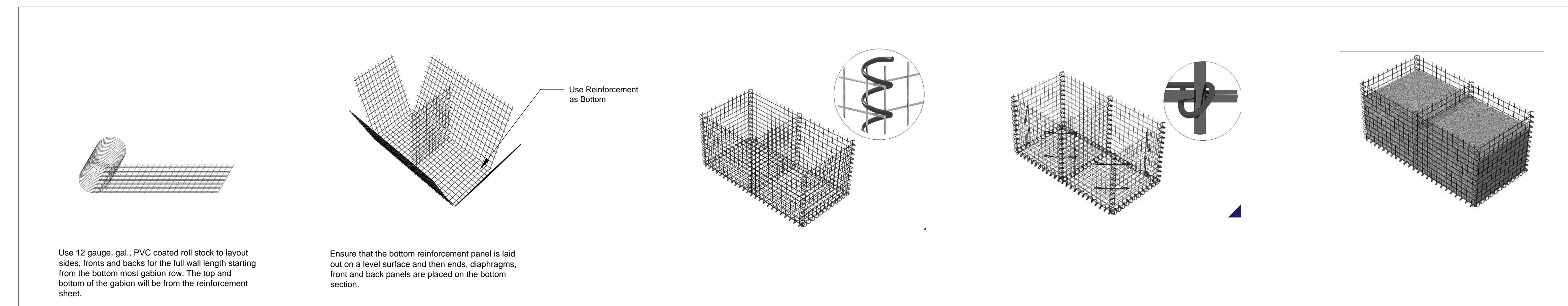
3 SECTION 2, X-SECTION PROPOSED STA. 1+60
SCALE: 1/8"=1'



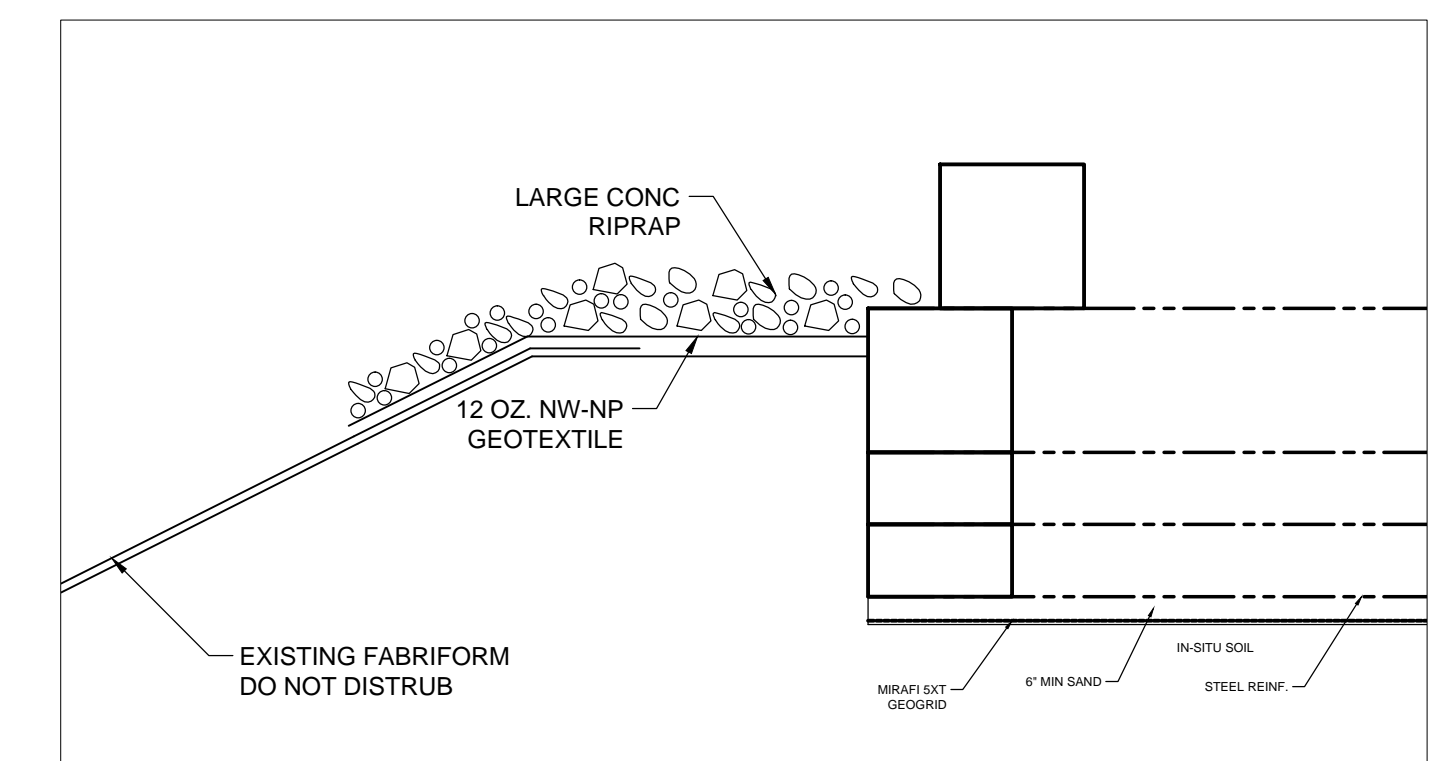
4 GABION-REINF. CONNECTION TYPICAL DETAIL
SCALE: 1/4"=1'



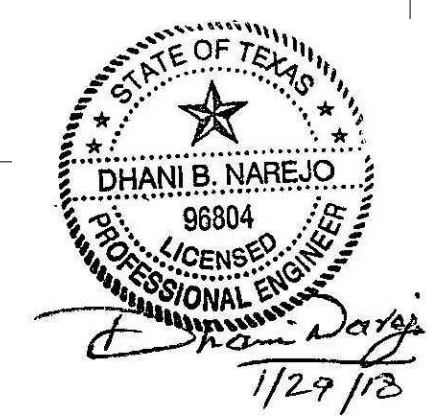
6 GABION-CREST DETAIL
SCALE: 1/4"=1'



7 GABION ASSEMBLY INSTRUCTIONS
SCALE: 3/16" = 1'



8 TOE PROTECTION DETAIL
SCALE: 1/4"=1'



BY	DN	DN	DN
REVISION	ISSUED FOR REVIEW	ISSUED FOR CONSTRUCTION	
DATE	1/25/2018	1/29/2018	
PREPARED BY:	NAREJO, INC. 5829 W SAM HOUSTON PKWY N., UNIT 208 HOUSTON, TX 77041 TEL: 832-649-8882 TX. Firm No. F-15284, TX. PE No. 96804		
7 MEMORIAL POINT LANE SLOPE STABILIZATION			
SHEET NO. W2			
ISSUED FOR CONSTRUCTION			