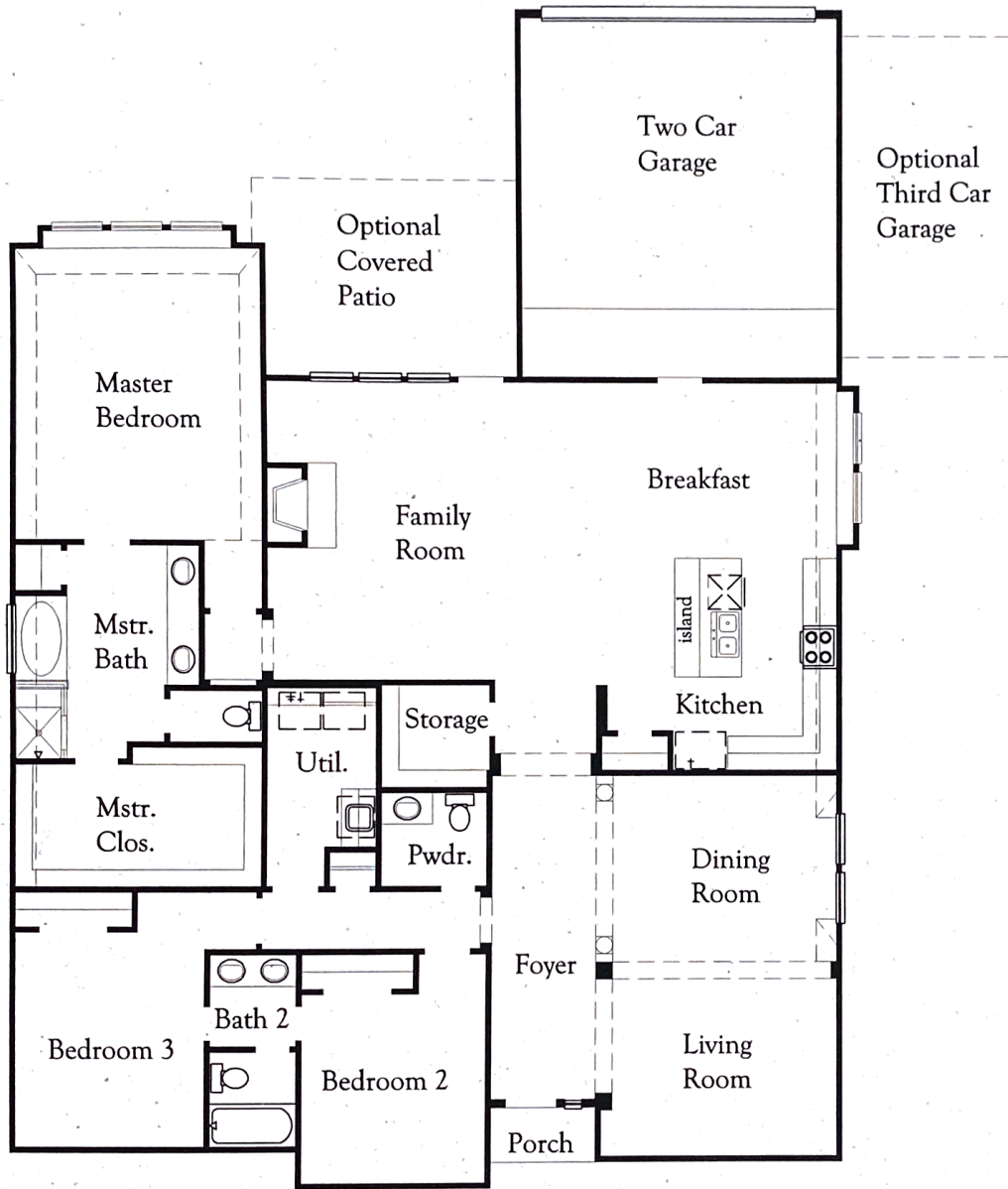
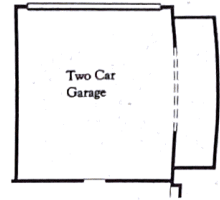
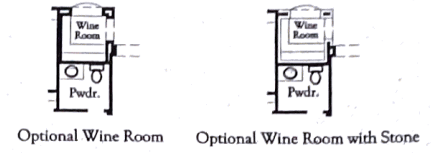


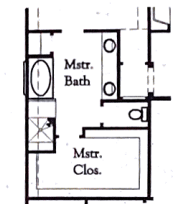
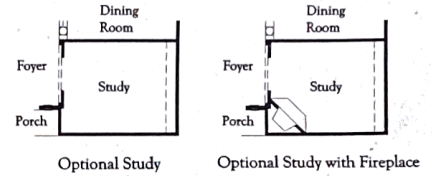
## Design 6454



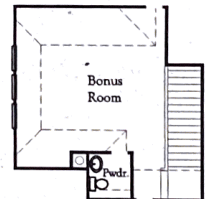
Floor Plan



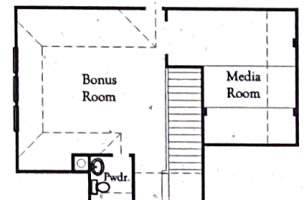
Optional Five Foot Garage Extension



Optional Walk-In Shower



Optional Bonus Room with Powder Room



Optional Bonus Room with Media Room and Powder Room

Available Options not shown

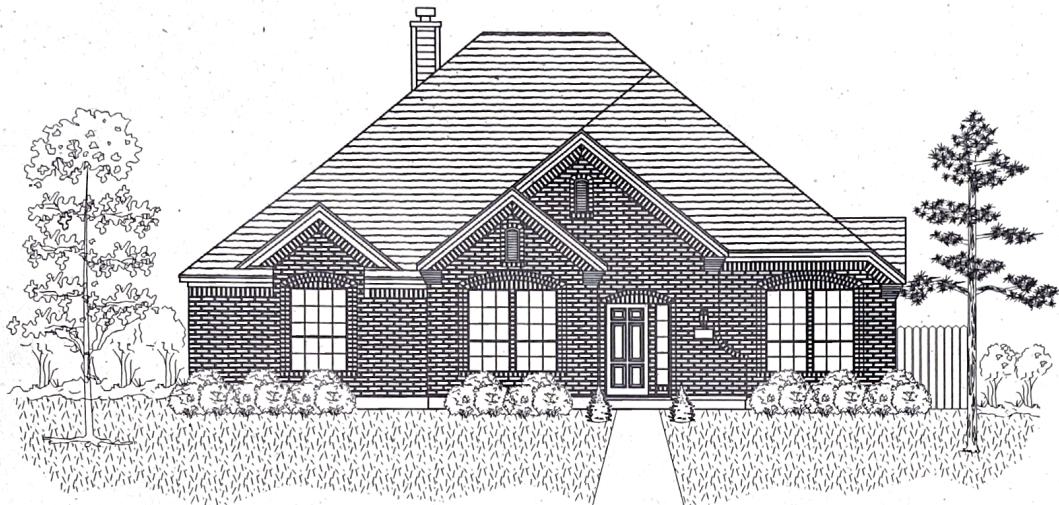
- Beamed Ceiling at Study
- Outdoor Fireplace
- Outdoor Kitchen
- Stone Alcove at Kitchen

This floor plan insert is an illustration of the overall room layout and floor plan design and is subject to change without notice. Some items displayed may or may not be standard in every community. Please review the Standard Feature Sheet in the community where you are purchasing for specific features included in this floor plan design. All options, bonus rooms, flex space and special features may not be represented on this insert and all are subject to availability and pricing by community, which can change without notice. Ask your sales counselor for details.





Live Your *Dreams*



Elevation "A"



Elevation "B"

Elevation renderings shown are artist's interpretations only. Window placement, rooflines, architectural elements and porches may vary. Elevations shown are subject to availability by community and some may or may not be offered as upgraded elevations in this community. Additional elevations may be available. Elevations, availability, and pricing are subject to change without notice. Ask your sales counselor for details. 6454 08/23/12 H



## *IDEAL KITCHENS*

- Moen® faucet with vegetable sprayer
- Optional brick or stone cooking alcove (some plans)
- Durable 8" deep undermount sink with garbage disposal allows for easy clean-up
- Granite countertops, available in a variety of colors, offer a solid and durable surface
- Attractive ceramic tile backsplash adds beauty to function
- Beautiful ceramic tile flooring in kitchen and breakfast area offers durability and low maintenance for quick clean-ups
- A convenient spice rack in the pantry adds function and storage
- Custom quality oak accented cabinetry with adjustable shelves on 42" upper cabinets maximizes use of space
- Elegant crown moulding on kitchen cabinetry
- Recessed can lighting (per plan)
- A drinking water purification system at the kitchen sink and water line to the refrigerator reduces chlorine and sediments and improves the overall taste, clarity and water quality
- Island work centers on many plans
- Exterior vented microwave oven
- GE® stainless steel appliance package for the gourmet chef in the family includes a freestanding self-clean gas range, space saver microwave, and dishwasher

## *DRAMATIC INTERIORS*

- Attractive, 2" window blinds are included on select windows for added privacy
- Rounded sheetrock corners throughout the home (with the exception of the windows) softens the look of the interior
- Choice of plush carpet with a quality pad
- Elegant two-step crown moulding in selected areas lends a classic look to the interior
- Fluted and crowned custom wood casing on front entry door (per plan)
- Picture frame moulding and chair rail in the formal dining room lends an air of elegance
- Attractive wood burning fireplace with decorative mantel and gas log lighter (per plan)
- Choice of ceramic tile on fireplace surround
- Dramatic entries with your choice of ceramic tile
- Environmentally friendly interior paint with contrasting wall, ceiling and trim color in a variety of choices
- Convenient laundry area with cabinet, shelf and rod
- Elegant stairways with oversized stained handrail, painted balusters and waterfall treads (per plan)
- Oversized baseboards throughout first floor
- Custom designer lighting package
- Recessed can lighting (per plan)
- Satin nickel lighting and door hardware
- Wide Décor rocker light switches
- Satin nickel finish door hardware
- Arched, raised panel interior doors
- Award-winning designs with extensive use of raised ceilings, arches, niches, columns and plant shelves complement the flexibility of our homes
- Nine-foot ceiling heights in many areas add spaciousness (per plan)

THE *FLEXIBILITY* TO CUSTOMIZE  
YOUR HOME TO MEET YOUR SPECIAL NEEDS.

# LUXURIOUS BATHS

- Luxurious garden tub with soothing hydro jets in master bath for ultimate relaxation
- Separate glass-enclosed shower with tile surrounds (some plans)
- Elongated commode in all baths
- Moen® brushed nickel plumbing fixtures in master bath and powder room for a timeless look
- Cultured marble window sill and wall caps in master bath for lower maintenance
- Rain glass at master bath window
- Cultured marble vanity tops with integral sinks in secondary baths
- Granite vanity tops with undermount bowls in master bath offer a durable, seamless appearance
- Cultured marble pedestal sink in powder room creates a classic look (per plan)
- Cultured marble seat (some shower enclosures)
- His & Hers Hi-Lo vanities in master bath with stained cabinetry (per plan)
- Ceramic tile flooring in master and secondary baths
- Ceramic tile in powder room
- Ceramic tile shower surrounds in secondary baths
- Ceramic tile surrounds in master bath
- Hardibacker® ceramic tile backing for added strength, durability and moisture protection (designated areas)
- Custom built shoe rack in master closet
- Single medicine cabinet in master bath
- A/C vent(s) in master walk-in closet(s)
- Framed mirror in powder bath for a designer touch
- Fluorescent lighting in master closet(s)
- Magazine rack in master water closet
- Raised ceilings in master closets with seasonal storage (per plan)
- Walk-in closets (in designated areas)

# CLASSIC EXTERIORS

- One live oak in front yard
- One tree planted between sidewalk and curb enhancing the curb appeal of the home
- Elegant stained mahogany front door with leaded glass inserts
- American-made clay brick
- Brick on four sides (designated areas)
- Brick paved front porches (per plan)
- Stone accented elevations (per plan)
- Seamless aluminum gutters (in designated areas)
- Lifetime limited warranty architectural shingles - nailed not stapled
- Choice of award winning exterior elevations including optional front porches
- Garage door openers with two transmitters
- Amazing James Hardie® masonry siding, soffit and fascia. Termite and flame resistant.
- Oversized homesites available
- Fully sodded front yard
- Professionally designed landscape package enhances curb appeal
- Custom cast stone address plaque with logo
- Decorative fireplace chimney shrouds
- Choice of exterior trim color(s) from color palette
- Six-foot cedar fenced back yard for added privacy
- Satin finish exterior hardware

*EXACTLY* AS YOU'VE  
ALWAYS DREAMED IT WOULD BE.

## COMFORT & ENERGY FEATURES

- Anti-scald valves to prevent accidental burning in showers and tubs
- FlowGuard Gold® plumbing system maintains water quality, is more energy efficient and results in reduced maintenance and greater reliability
- High efficiency energy saving gas water heater(s)
- Vinyl framed, double-pane windows with low-e, impact resistant glass for energy efficiency and windborne debris protection
- 16 SEER high efficiency air conditioning system(s)
- 95% efficient furnaces with variable speed motors that help with humidity control
- A carbon monoxide detector is installed for added peace of mind (designated areas)
- Additional A/C return in master bedroom for better comfort
- Balanced air pressure which comes from jump ducts, returns or transfer grills allows the HVAC system to function at peak efficiency
- Soffit vents, ridge vent and/or air hawk ventilation system
- Energy saving gas heating system with electronic ignitor (no pilot)
- Energy Star rated programmable thermostats
- Filtered, fresh air intake ventilator system provides fresh air into the home refreshing old, stale air
- High performance media air filter cleans air more efficiently than standard fiber filters
- Programmable comfort center thermostat with humidistat control maximizes home comfort year round
- R-22 insulation in non-flat ceiling areas
- R-38 insulation in air conditioned flat ceilings
- Radiant barrier roof decking in the attic drastically lowers attic temperature reducing heat being transferred into the home and extending air conditioner life
- Energy Star rated ceiling fans
- Satin nickel finish on ceiling fans
- Superior quality reversible ceiling fan with light kit in family room, master bedroom and game room
- Triple barrier air infiltration system stops air leakage in the home and helps reduce utility bills
- Homes built to meet stringent Environments for Living™ Platinum
- Level energy efficiency program
- Standard connections for both gas and electric clothes dryer
- We performance test every home for air leakage
- R-15 insulation in exterior air conditioned walls

## EXTRA TOUCHES

- Certified, 3/4" engineered wood subfloor with advanced panel construction for strength and durability offers a 50-year transferable warranty
- Freezer plug in garage
- All bedrooms blocked and wired for ceiling fans
- Fully installed alarm system with optional monitoring for peace of mind including one keypad
- Home office connection (two phone lines, one data and one coaxial) in data area/study simplifies home networking abilities
- Master bath pre-wired for a glass break detector
- Prewired for motion detector in family room and prewired keypad in master bedroom
- Prewired for phone in kitchen and master bedroom
- State-of-the-art CAT5 advanced wiring for communications and home entertainment on all phone lines
- State-of-the-art RG 6 Digital ready coaxial cable quad shield for satellite dish and high speed Internet access
- Home office connection (two phone lines and one coaxial) in study simplifies home networking abilities
- Prewired for phone and TV combination in game room
- Prewired for cable TV in kitchen, family room and all bedrooms
- Engineered flooring system drastically reduces floor noise caused by joist shrinkage, building a strong, solid and secure floor
- Exhaust fan in all baths
- Exhaust fan and air-conditioning duct in walk-in utility room
- Breaker box in garage
- Fluorescent light in garage
- Two holiday lighting outlets at soffit with separate switch
- Flexible designs allowing you to customize your home to fit your lifestyle - limited only by building codes, deed restrictions, your budget and your imagination
- On site custom framing
- Optional bonus spaces available on many plans
- Our homes are engineered, inspected and certified to meet the minimum 120 mph wind speed requirements of the International Residential Code. The use of special clips, straps and anchors in the construction of our homes creates added peace of mind and protection for you and your family living on the Gulf Coast
- Personal interview with a Professional Decorator Consultant at the Design Center
- Protect your home against pests with a pest control system that applies materials directly into the walls and minimizes exposure to your family, pets and interior surfaces
- We are so confident in the quality of our homes, we offer a 2-year warranty on materials and workmanship and a 10-year structural warranty providing you with the added assurance and peace of mind that your new home will deliver the value and enjoyment you deserve

LIFE LIVED TO THE FULLEST.

YOUR *DREAMS* ATTAINED.

Coventry Homes will be continually providing you with the best possible home designs and features. In doing so, Coventry Homes reserves the right to make additions, deletions and/or modify the available features without notice. Features displayed in our models may or may not be included as standard features. 9/12 H8Q

[www.CoventryHomes.com](http://www.CoventryHomes.com)