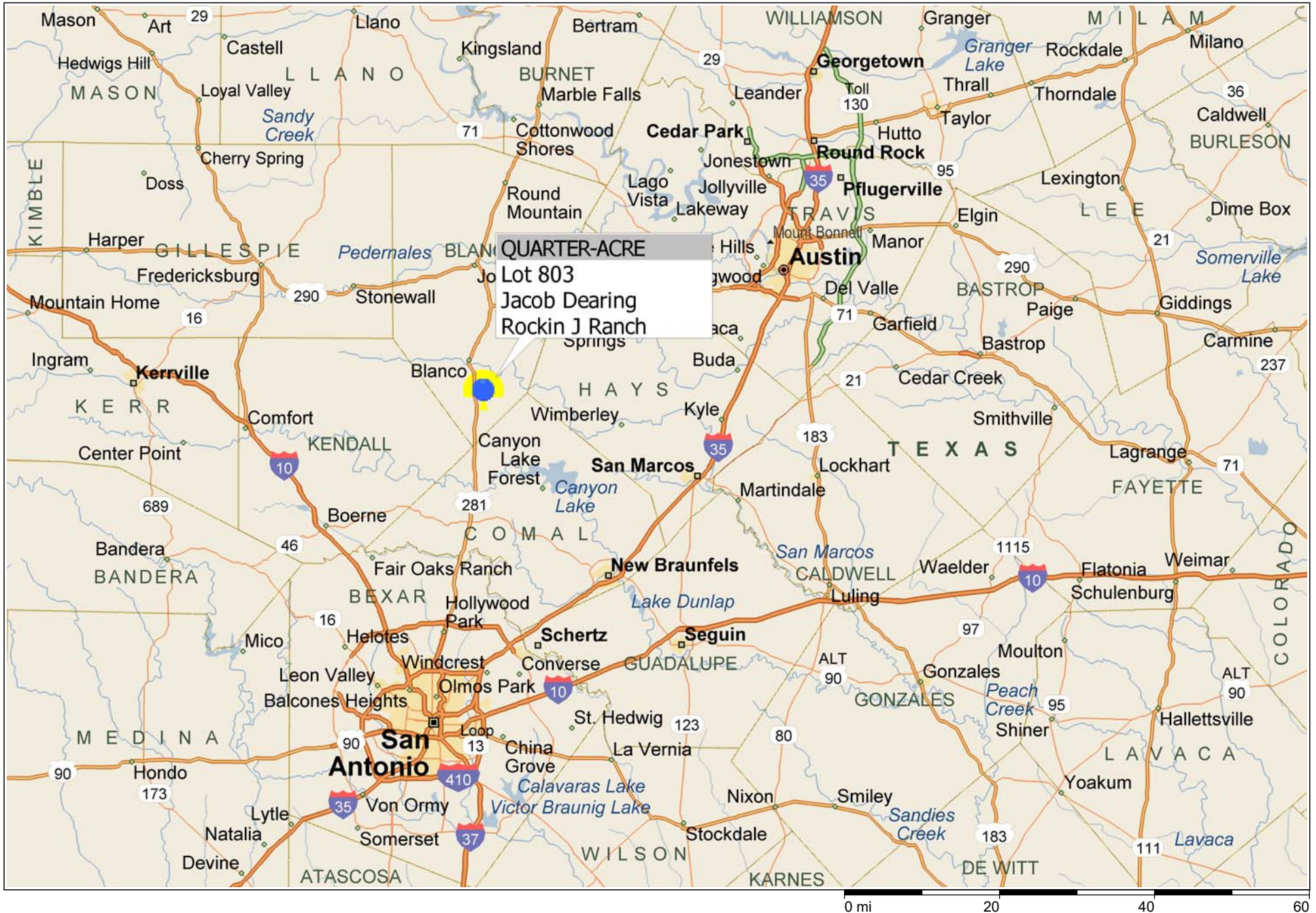


\*\*\* QUARTER-ACRE \*\*\* Lot 803 Jacob Dearing ~ Rockin J Ranch





Un-Platted area  
David Hammond  
Vol. 334, pg. 737-740

Clemente Zapata 60' ROW

Jacob Dearing 60' ROW

Jeff Vaughn 60' ROW

321 0.27 acres  
320 0.27 acres  
319 0.27 acres  
318 0.27 acres  
317 0.27 acres  
316 0.27 acres  
315 0.27 acres  
314 0.27 acres  
313 0.28 acres

803 0.27 acres

288 0.30 acres

285 0.31 acres

284 0.32 acres

802 0.31 acres

801 0.29 acres

800 0.31 acres

851 0.19 acres

852 0.19 acres

853 0.18 acres

854 0.21 acres

855 0.18 acres

856 0.21 acres

857 0.21 acres

858 0.21 acres

859 0.21 acres

860 0.21 acres

850 0.28 acres

849 0.28 acres

848 0.25 acres

847 0.25 acres

846 0.25 acres

845 0.25 acres

844 0.25 acres

843 0.25 acres

842 0.25 acres

841 0.25 acres

840 0.25 acres

839 0.25 acres

838 0.25 acres

837 0.25 acres

836 0.25 acres

835 0.25 acres

834 0.25 acres

833 0.25 acres

832 0.25 acres

831 0.25 acres

830 0.25 acres

829 0.25 acres

828 0.25 acres

827 0.25 acres

826 0.25 acres

825 0.25 acres

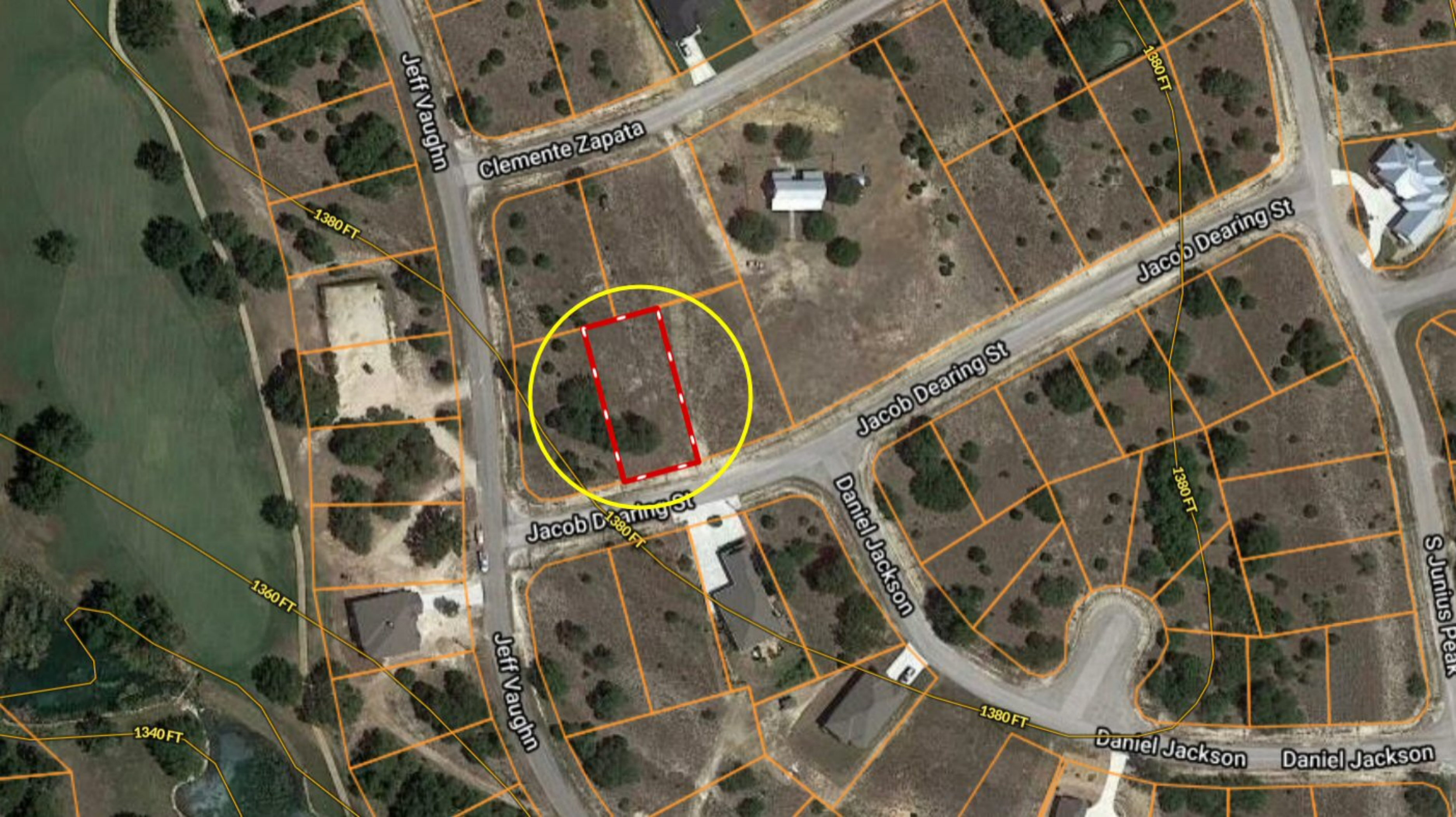
824 0.25 acres

823 0.25 acres

822 0.25 acres

821 0.25 acres

820 0.25 acres



Jeff Vaughn

Clemente Zapata

Jacob Dearing St

Jacob Dearing St

Jacob Dearing St

Daniel Jackson

Jeff Vaughn

Daniel Jackson

Daniel Jackson

S Junius Peak

1380 FT

1380 FT

1380 FT

1360 FT

1380 FT

1340 FT



Clemente Zapata

1380 FT

Jeff Vaughn

1380 FT

Jacob Dearing S

1380 FT

Jacob Dea

Daniel Jackson

1360 FT

1360 FT

1380 FT

Jeff