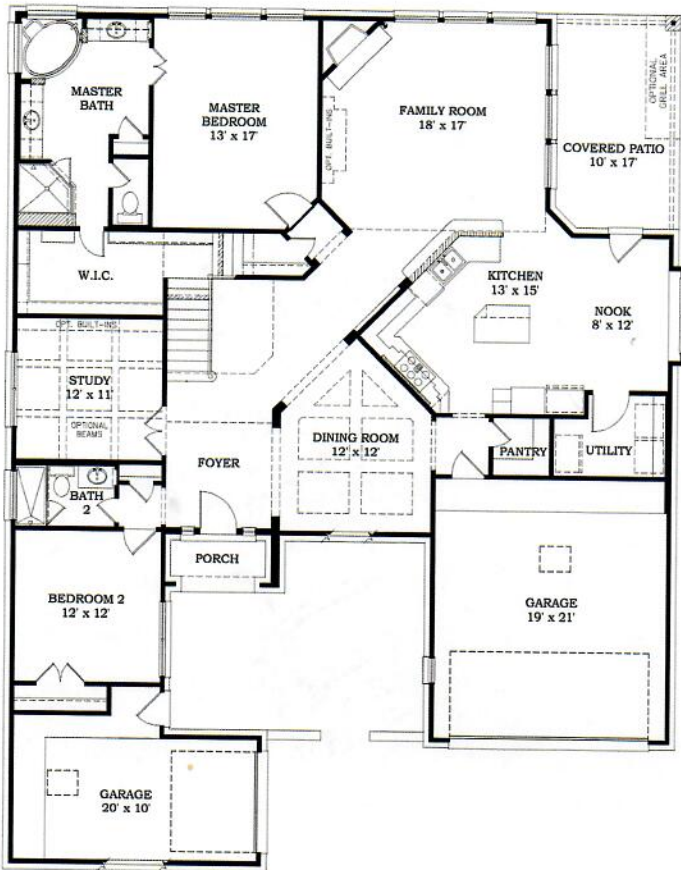
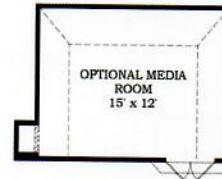


# The Oakmont

5 Bedrooms | 4 Baths | 3-Car Garage | 3,519 Sq. Ft.



FIRST FLOOR PLAN



OPTIONAL MEDIA ROOM



SECOND FLOOR PLAN

Wentworth Collection  
Plan#5461



# VB VILLAGE BUILDERS

*Wentworth Collection Features*

## **ENERGY STAR® RATED BUILDER/ ENERGY EFFICIENCY/CONSTRUCTION:**

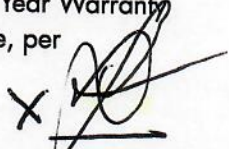
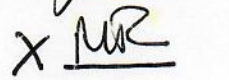
- Energy Star Ratings Performed to Environmental Protection Agency's ENERGY STAR® Guidelines
- Exterior Air Filtration Damper
- Programmable Thermostat
- 16-SEER Air Conditioning System
- Radiant Barrier Roof Decking
- (2) 40-Gallon High Efficiency Water Heaters in Homes with 3 or More Baths, per plan
- R-38 Insulation in Flat Ceilings (where accessible)
- R-22 Insulation on Sloped Ceilings and Attic Walls
- R-13 Insulation and R-3 Sheathing on Exterior Walls (where applicable)
- Poly Seal Insulation Throughout to Minimize Air Infiltration and Ensure Energy Efficiency
- High Performance, Triple Coated Low E Insulated Windows for Added Energy Efficiency
- Tilt Out Sash on All Operable Windows
- Vinyl Window Frames in Tan Color

## **CONSTRUCTION:**

- Garage Door Opener with (2) Remotes
- Structured Wiring System to Meet or Exceed Development Specifications
- Wiring for Telephone Outlets in All Bedrooms, Study, Kitchen, Game Room and Computer Space, per plan
- Wiring for Cable Outlets in all Bedrooms, Study, Game Room and Computer Space, per plan
- Multi-port Branch and Tee Plumbing System
- 3000 PSI Post-Tension Foundation Certified by an Independent Engineer
- Engineered Subfloor Framing System
- 3/4-Inch Tongue and Groove Subflooring Secured with Screws and Adhesive on Two Story Homes
- Thorough Inspection Process Conducted at Critical Stages of Construction
- Quality Assurance Inspection Prior to New Home Orientation

## **OUTSIDE YOUR NEW VILLAGE BUILDERS HOME:**

- Weatherproof Fiber-Cement Siding with 30 Year Warranty
- Fully Fenced Rear Yard with One Walk Gate, per community guidelines
- Full Sod in Front and Rear Yards
- Fully Automatic Irrigation System
- Full Gutters, per community
- 8' Mahogany Front Door with Insulated Leaded Glass Insert
- 8' Full Lite Back Patio Door
- Brick Front Porch
- 30-Year High Quality Dimensional Shingles
- Ridge Vents and Air Hawks with Continuous Soffit Vents
- Designer Coach Light at Entry and Garage, per plan
- Hose Bibbs at Front and Rear of Home
- Genuine Fired Clay Brick
- Masonry Address Block
- Covered Concrete Patio with Ceiling Fan, per plan
- Deadbolt Locks on All Exterior Doors
- Weatherproof Exterior Outlets at Front and Rear of Home
- Design Enhanced Steel Over-Head Garage Door

X   
X 

## **INTERIOR DESIGN CONSULTATION:**

- All customers buying at pre-construction receive a complimentary 2-hour design consultation with a professional designer at the Village Builders Design Studio.

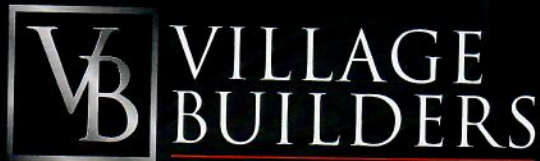
DESIGN  
STUDIO

550 Greens Pkwy, Ste 200, Houston, TX 77067

VILLAGEBUILDERS.COM

The specific features in a home may vary from home to home and from one community to another. We reserve the right to substitute equipment, materials, appliances and brand names with items of equal or higher, in our sole opinion, value. Color and size variations may occur. The prices of our homes, included features, and available locations are subject to change without notice. Please see the actual home purchase agreement for additional information, disclosures, and disclaimers relating to the home and its features. Void where prohibited by law. Copyright © 2012. Lennar Corporation. Village Builders and the Village Builders logo are service marks of Lennar Corporation and/or its subsidiaries. 3/12





*Wentworth Collection Features*

**ENERGY STAR® RATED BUILDER/  
ENERGY EFFICIENCY/CONSTRUCTION:**

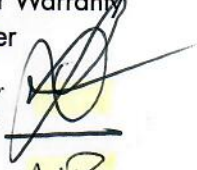

- Energy Star Ratings Performed to Environmental Protection Agency's ENERGY STAR® Guidelines
- Exterior Air Filtration Damper
- Programmable Thermostat
- 16-SEER Air Conditioning System
- Radiant Barrier Roof Decking
- (2) 40-Gallon High Efficiency Water Heaters in Homes with 3 or More Baths, per plan
- R-38 Insulation in Flat Ceilings (where accessible)
- R-22 Insulation on Sloped Ceilings and Attic Walls
- R-13 Insulation and R-3 Sheathing on Exterior Walls (where applicable)
- Poly Seal Insulation Throughout to Minimize Air Infiltration and Ensure Energy Efficiency
- High Performance, Triple Coated Low E Insulated Windows for Added Energy Efficiency
- Tilt Out Sash on All Operable Windows
- Vinyl Window Frames in Tan Color

**CONSTRUCTION:**

- Garage Door Opener with (2) Remotes
- Structured Wiring System to Meet or Exceed Development Specifications
- Wiring for Telephone Outlets in All Bedrooms, Study, Kitchen, Game Room and Computer Space, per plan
- Wiring for Cable Outlets in all Bedrooms, Study, Game Room and Computer Space, per plan
- Multi-port Branch and Tee Plumbing System
- 3000 PSI Post-Tension Foundation Certified by an Independent Engineer
- Engineered Subfloor Framing System
- 3/4-Inch Tongue and Groove Subflooring Secured with Screws and Adhesive on Two Story Homes
- Thorough Inspection Process Conducted at Critical Stages of Construction
- Quality Assurance Inspection Prior to New Home Orientation

**OUTSIDE YOUR NEW VILLAGE BUILDERS HOME:**

- Weatherproof Fiber-Cement Siding with 30 Year Warranty
- Fully Fenced Rear Yard with One Walk Gate, per community guidelines
- Full Sod in Front and Rear Yards
- Fully Automatic Irrigation System
- Full Gutters, per community
- 8' Mahogany Front Door with Insulated Leaded Glass Insert
- 8' Full Lite Back Patio Door
- Brick Front Porch
- 30-Year High Quality Dimensional Shingles
- Ridge Vents and Air Hawks with Continuous Soffit Vents
- Designer Coach Light at Entry and Garage, per plan
- Hose Bibbs at Front and Rear of Home
- Genuine Fired Clay Brick
- Masonry Address Block
- Covered Concrete Patio with Ceiling Fan, per plan
- Deadbolt Locks on All Exterior Doors
- Weatherproof Exterior Outlets at Front and Rear of Home
- Design Enhanced Steel Over-Head Garage Door

X   
X 

**INTERIOR DESIGN CONSULTATION:**

- All customers buying at pre-construction receive a complimentary 2-hour design consultation with a professional designer at the Village Builders Design Studio.

**DESIGN  
STUDIO**

550 Greens Pkwy, Ste 200, Houston, TX 77067

**VILLAGEBUILDERS.COM**

The specific features in a home may vary from home to home and from one community to another. We reserve the right to substitute equipment, materials, appliances and brand names with items of equal or higher, in our sole opinion, value. Color and size variations may occur. The prices of our homes, included features, and available locations are subject to change without notice. Please see the actual home purchase agreement for additional information, disclosures, and disclaimers relating to the home and its features. Void where prohibited by law. Copyright © 2012. Lennar Corporation. Village Builders and the Village Builders logo are service marks of Lennar Corporation and/or its subsidiaries. 3/12

