

UNIT II

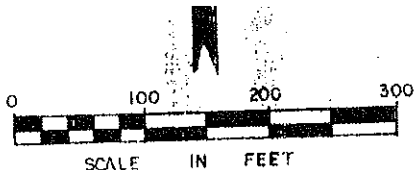
"PARADISE ACRES"

A RESORT SUBDIVISION OF 53343 ACRES OF LAND
 OUT OF THE A.M. DeLAJARZA SURVEY, A - 44,
 AND BEING THE LAND CONVEYED TO J.W. THOMPSON
 & BEN F. MOSS, 49.99 AC. TR. VOL. 230 PG. 156, 2.87 AC.
 TR. VOL. 230 PG. 156, AND 0.483 AC. TR. VOL. PG.
 OF THE DEED RECORDS, POLK. COUNTY, TEXAS.

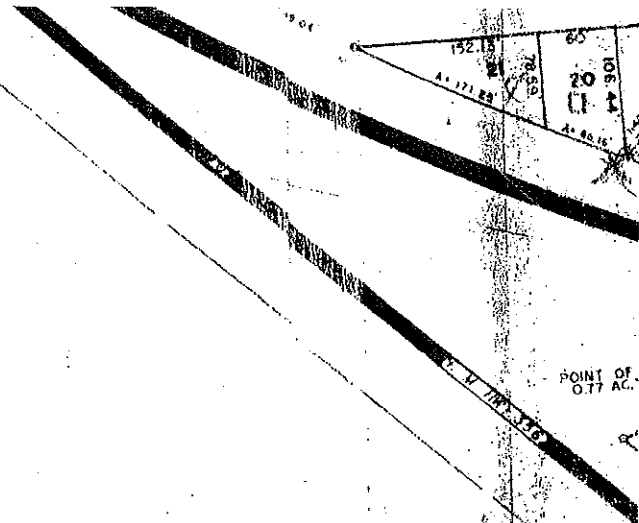
8 BLOCKS ————— 289 LOTS

COMMON AREA & PARK

LAKE LIV



5000 lb STD
~~500~~



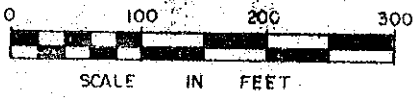
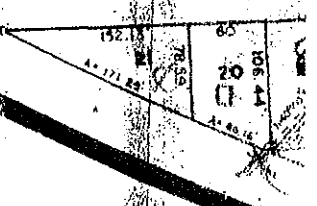
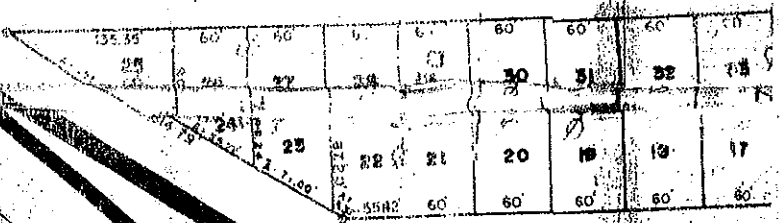
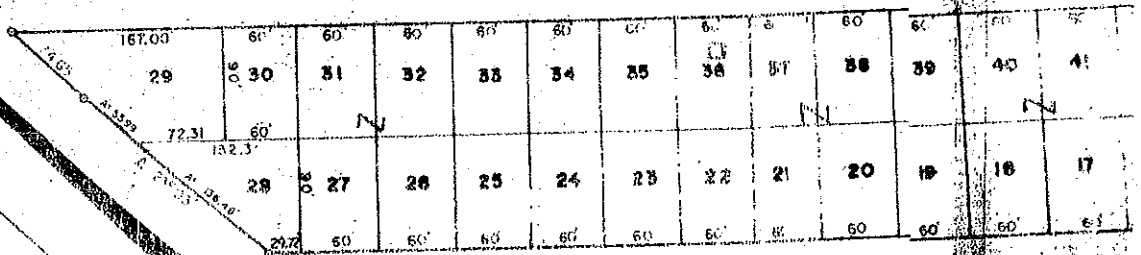
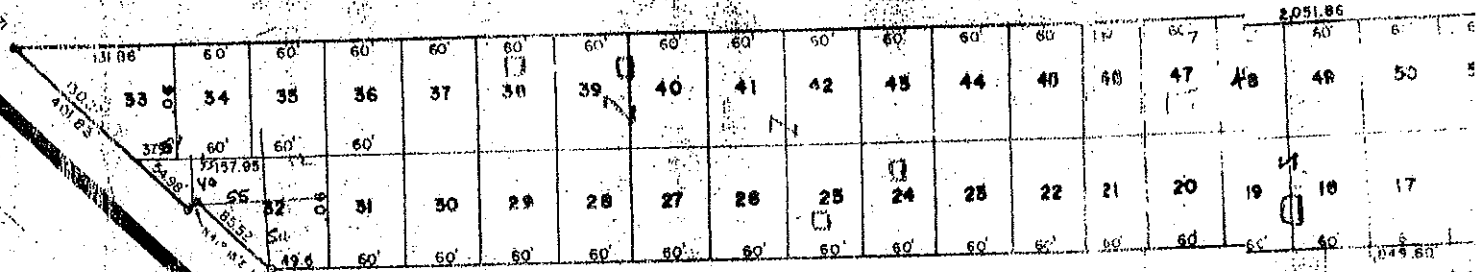
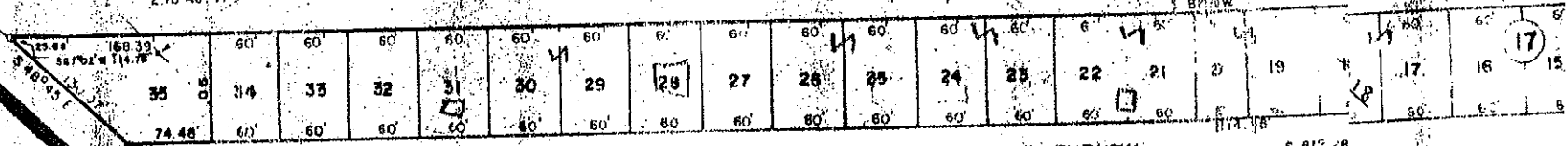
UNIT II "PARADISE ACRES"

A RESORT SUBDIVISION OF 53343 ACRES OF LAND
OUT OF THE A.M. DELAJARZA SURVEY, A - 44,
AND BEING THE LAND CONVEYED TO J.W. THOMPSON
& BEN F. MOSS, 49.99 AC. TR. VOL. 230 PG. 156, 2.87 AC.
TR. VOL. 230 PG. 156, AND 0.483 AC. TR. VOL. PG.,
OF THE DEED RECORDS, POLK COUNTY, TEXAS.

8 BLOCKS ————— 289 LOTS

This Plat is recorded in Vol. 3, Pg. 57 - Polk County Pl

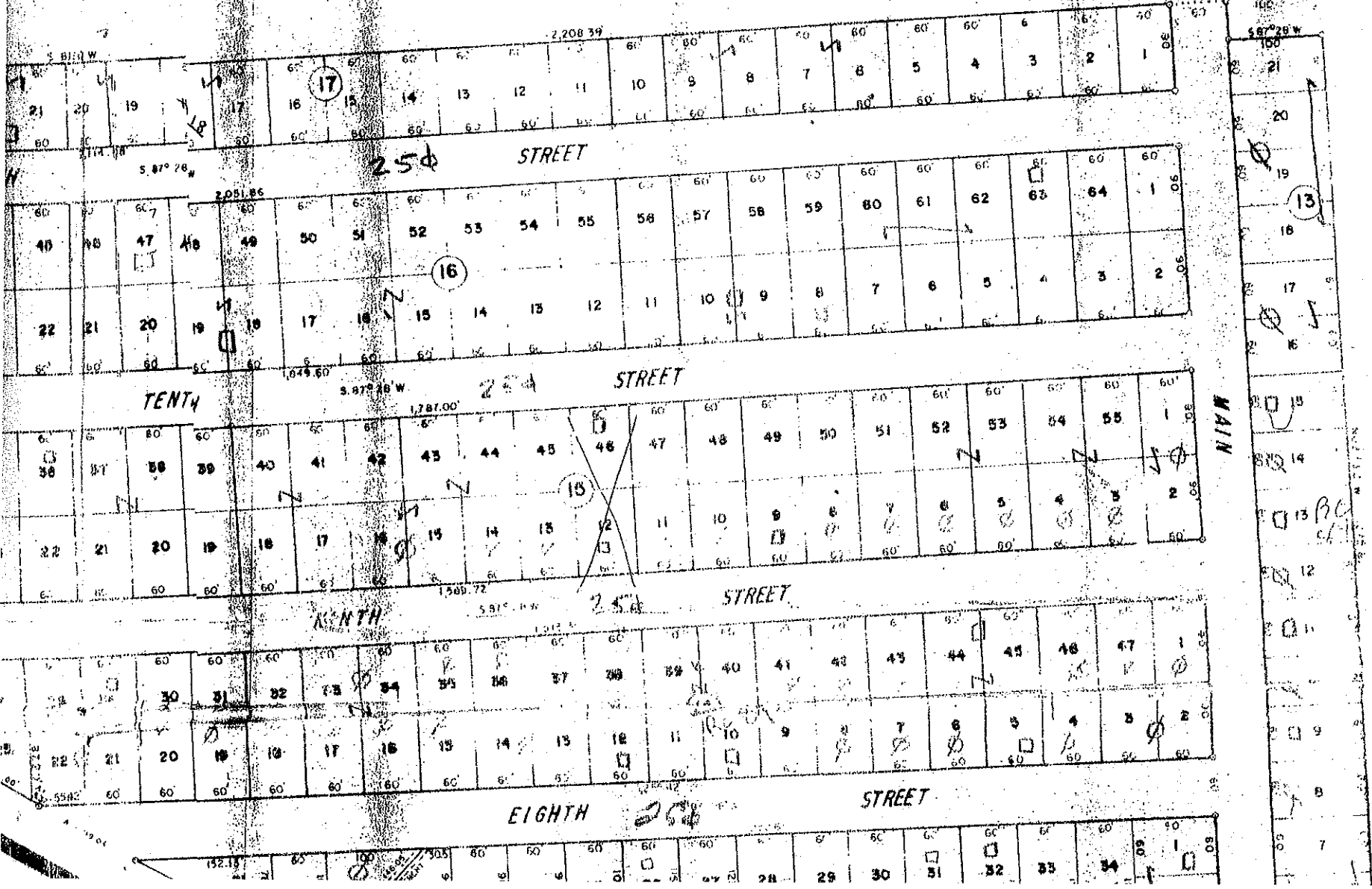
POINT OF BEGINNING
2.10 AC. TR.



5000th STD
504

RESERVED FOR FUTURE DEVELOPMENT

N.E. CORNER 49.99 A. 78
 B. POINT OF BEGINNING
 IF 0.483 AC. TR.



Before 1881
 1881-1882
 1882-1883
 1883-1884
 1884-1885
 1885-1886
 1886-1887
 1887-1888
 1888-1889
 1889-1890
 1890-1891
 1891-1892
 1892-1893
 1893-1894
 1894-1895
 1895-1896
 1896-1897
 1897-1898
 1898-1899
 1899-1900
 1900-1901
 1901-1902
 1902-1903
 1903-1904
 1904-1905
 1905-1906
 1906-1907
 1907-1908
 1908-1909
 1909-1910
 1910-1911
 1911-1912
 1912-1913
 1913-1914
 1914-1915
 1915-1916
 1916-1917
 1917-1918
 1918-1919
 1919-1920
 1920-1921
 1921-1922
 1922-1923
 1923-1924
 1924-1925
 1925-1926
 1926-1927
 1927-1928
 1928-1929
 1929-1930
 1930-1931
 1931-1932
 1932-1933
 1933-1934
 1934-1935
 1935-1936
 1936-1937
 1937-1938
 1938-1939
 1939-1940
 1940-1941
 1941-1942
 1942-1943
 1943-1944
 1944-1945
 1945-1946
 1946-1947
 1947-1948
 1948-1949
 1949-1950
 1950-1951
 1951-1952
 1952-1953
 1953-1954
 1954-1955
 1955-1956
 1956-1957
 1957-1958
 1958-1959
 1959-1960
 1960-1961
 1961-1962
 1962-1963
 1963-1964
 1964-1965
 1965-1966
 1966-1967
 1967-1968
 1968-1969
 1969-1970
 1970-1971
 1971-1972
 1972-1973
 1973-1974
 1974-1975
 1975-1976
 1976-1977
 1977-1978
 1978-1979
 1979-1980
 1980-1981
 1981-1982
 1982-1983
 1983-1984
 1984-1985
 1985-1986
 1986-1987
 1987-1988
 1988-1989
 1989-1990
 1990-1991
 1991-1992
 1992-1993
 1993-1994
 1994-1995
 1995-1996
 1996-1997
 1997-1998
 1998-1999
 1999-2000
 2000-2001
 2001-2002
 2002-2003
 2003-2004
 2004-2005
 2005-2006
 2006-2007
 2007-2008
 2008-2009
 2009-2010
 2010-2011
 2011-2012
 2012-2013
 2013-2014
 2014-2015
 2015-2016
 2016-2017
 2017-2018
 2018-2019
 2019-2020
 2020-2021
 2021-2022
 2022-2023
 2023-2024
 2024-2025
 2025-2026
 2026-2027
 2027-2028
 2028-2029
 2029-2030
 2030-2031
 2031-2032
 2032-2033
 2033-2034
 2034-2035
 2035-2036
 2036-2037
 2037-2038
 2038-2039
 2039-2040
 2040-2041
 2041-2042
 2042-2043
 2043-2044
 2044-2045
 2045-2046
 2046-2047
 2047-2048
 2048-2049
 2049-2050
 2050-2051
 2051-2052
 2052-2053
 2053-2054
 2054-2055
 2055-2056
 2056-2057
 2057-2058
 2058-2059
 2059-2060
 2060-2061
 2061-2062
 2062-2063
 2063-2064
 2064-2065
 2065-2066
 2066-2067
 2067-2068
 2068-2069
 2069-2070
 2070-2071
 2071-2072
 2072-2073
 2073-2074
 2074-2075
 2075-2076
 2076-2077
 2077-2078
 2078-2079
 2079-2080
 2080-2081
 2081-2082
 2082-2083
 2083-2084
 2084-2085
 2085-2086
 2086-2087
 2087-2088
 2088-2089
 2089-2090
 2090-2091
 2091-2092
 2092-2093
 2093-2094
 2094-2095
 2095-2096
 2096-2097
 2097-2098
 2098-2099
 2099-2100

APPROVE.
 POLK COU
 AUGUST 1

Handwritten signature and date

Handwritten text at the bottom right

