

I, JOE A. FULLER, Registered Professional Land Surveyor, do hereby certify that this plat represents a survey made on the ground under my supervision and that all monuments and appurtenances are as shown hereon.

Signed *Joe A. Fuller*

JOE A. FULLER
 F.P.L.S. No. 4066
 October 4, 1994

Glen Dale Cougot
 Vol. 279, Pg. 632, D.R.
 Call 44.0 acres

Point in easement
 Fnd 1 1/2" iron rod
 Fnd 15' 0" N40°45' E - 45.1'
 Fnd 15' 0" N107°5' W - 66.0'
 Fnd 15' 0" S19°45' E - 45.1'
 Fnd 15' 0" S89°E - 95.3' - 98'

Deanna G. Gideon
 Vol. 83, Pg. 703, O.R.
 Part of call 9.47 acres

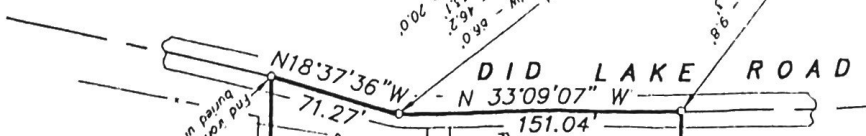
KAY ANNE... MOREK
 Vol. 199, Pg. 254, O.R.
 Call 1.23 acres
 (Tract 9)

Deanna G. Gideon
 Vol. 83, Pg. 703, O.R.
 Part of call 9.47 acres

LORRY G. WOODS
 Vol. 213, Pg. 513, O.R.
 Call 0.99 acre

Deanna G. Gideon
 Vol. 83, Pg. 703, O.R.
 Part of call 9.47 acres

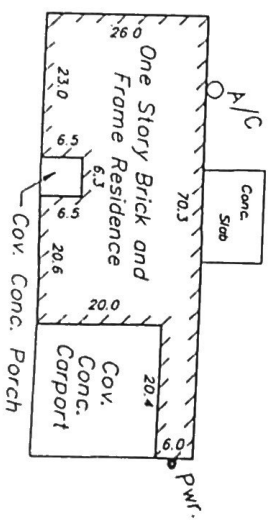
Jack Eastham
 Vol. 169, Pg. 133, O.R.
 Call 250.0 acres



Vol. 192, Pg. 679, O.R.
 S 58°09'38" W - 998.60'

SURVEYED --- 5.00 ACRES

John D. Fisher
 Vol. 323, Pg. 156, D.R.
 Call 5.00 acres



Scale: 1" = 30 Feet

--- D E T A I L ---

PLAT OF SURVEY OF

JOHN D. FISHER
 5.00 ACRE TRACT

In the G. A. LAMB SURVEY, A-326
 Walker County, Texas

October, 1994

Scale: 1" = 100 Feet

FULLER and ASSOCIATES
 1023 Sam Houston Avenue
 Huntsville, Texas
 FILE: FISHER (1994)