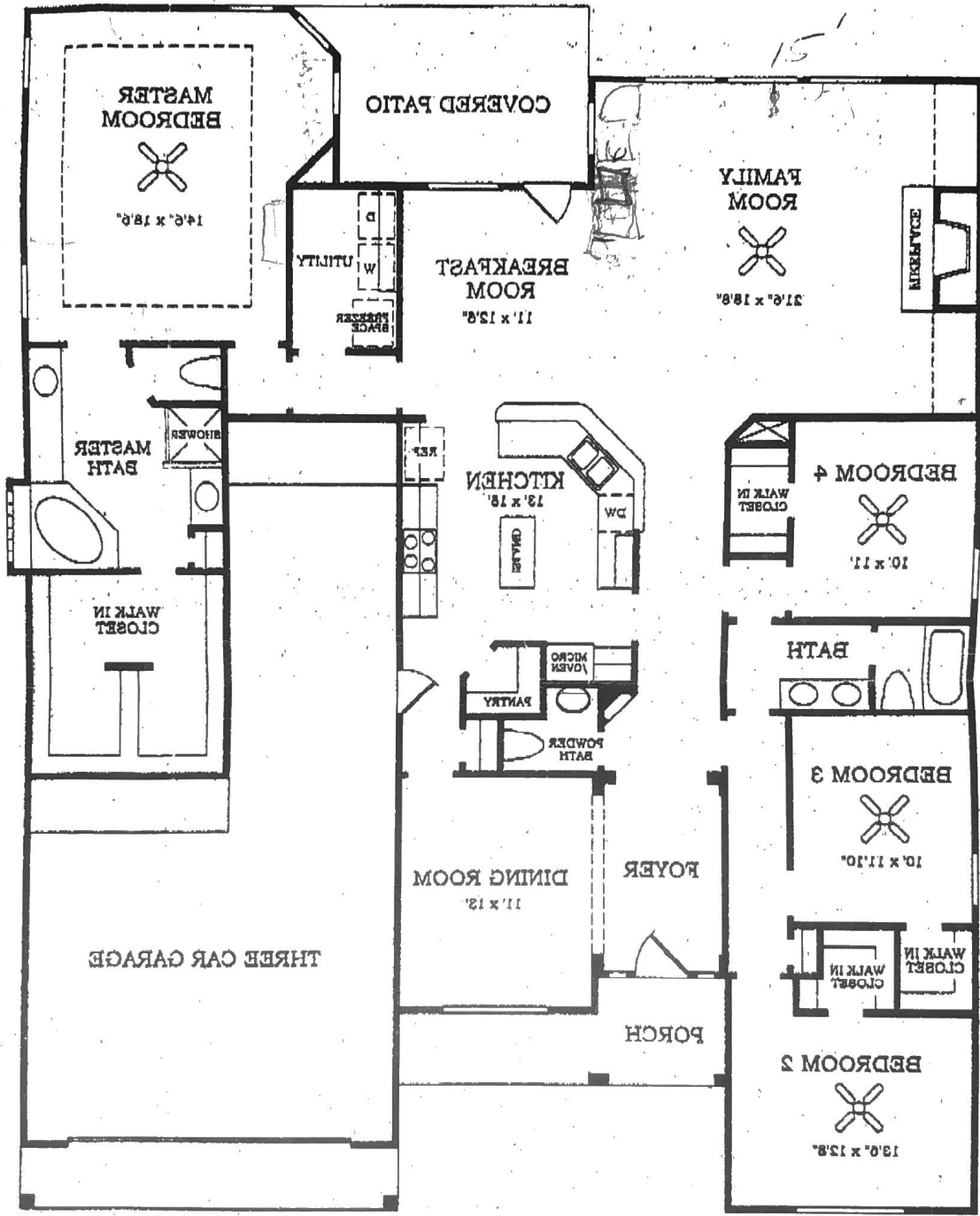


The Baywood

MODEL #8100
 FOUR BEDROOMS, TWO AND ONE HALF BATHS, SPLIT BEDROOM DESIGN, FORMAL DINING ROOM, ISLAND KITCHEN WITH
 COUNTER BAR LOOKING OUT ONTO LARGE FAMILY ROOM, MASTER SUITE WITH LARGE WALK-IN CLOSET AND COVERED FRONT
 AND REAR PATIOS. APPROXIMATELY 2821 SQ. FT.



All dimensions are approximate. Layout may be revised. Landscaping shown is for conceptual purposes only. In our continuing efforts to improve our product, Lennar Homes reserves the right to revise specifications and dimensions without notice.

