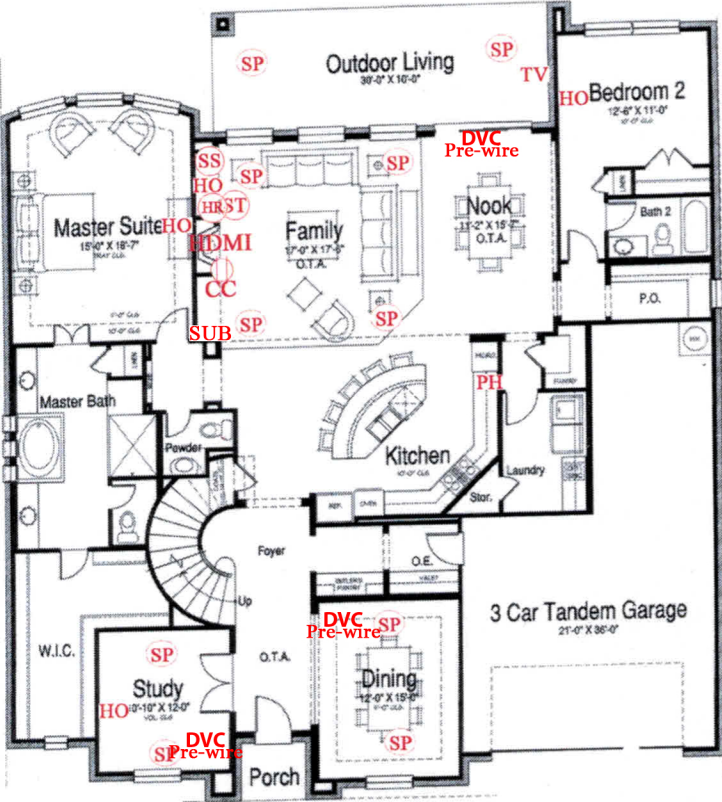




# 5510 Pecan Leaf



- TV = TV Location (rg6)
- PH = Phone Location (cat5e)
- ENT = Home Entertainment Location (1 cat5e/2 rg6)
- HO = Home Office Location (2 cat5e/1 rg6)
- UNV = Universal Outlet Location (2 cat5e/2 rg6)
- DAT = Data Location (cat5e)
- NO = Network Office (3 cat5e/1 rg6)
- SUB = Subwoofer Prewire Location
- SS = Surround Sound Homerun
- DVC = Digital Volume Control **Pre-wire Only**
- ST = Stereo Speaker Prewire Homerun
- HDMI = HDMI Bundle (2 HDMI, 2 Cat5e (Trimmed), Conduit) at 5'5" unless otherwise noted
- Ⓜ = HDMI Bundle Homerun
- PROJ = Projector Bundle (2 HDMI, 2 Cat5e (Trimmed), Conduit)
- PR = Projector Bundle Homerun
- IR = Infrared Prewire
- Ⓧ = Electrical Outlet Location 110v
- INT = Intercom Station Prewire Location
- int = Intercom Master Unit Prewirer
- CAM = Camera Location (All cameras Homerun to SWP unless otherwise noted)
- Ⓛ = Camera DVR Homerun **Cannot Install Cameras over 12ft**
- Ⓥ = Vertical FlexTube at 5'5" unless otherwise noted
- Ⓢ = Vertical FlexTube w/HDMI
- Ⓟ = 5 runs of Cat5e Bundle
- Ⓠ = 5 runs of Cat5e, HomeRun
- SWP = Structured Wiring Panel
- MD = Monitored Motion Detector
- KP = Security Keypad
- SD = Monitored Smoke Detector (Location to be determined by tech on site)
- GB = Glass Break Detector
- SAT = Satellite Prewire (4 rg6)
- SP = In-Wall Speaker Prewire (at 5ft 6in unless noted by consultant)
- Ⓢ = In-Ceiling Speaker Prewire **Cannot Install Speakers over 12ft**
- CC = Center Channel (at 2ft 6in unless noted by consultant)
- LZ = Lighting Zone Prewire
- AP = Automation Panel Prewire

