

Trophy Homes

Signature Series

Exterior and Design Features

- **Boral or other Clay-Fired Brick @ Front 1st Floor with 5' wrap at sides**
- **Cemplank fiber-cement siding w/25 year limited warranty**
- **Cemplank fiber-cement soffit, fascia, and trim**
- Fully sodded front and side yards up to cedar fence
- Landscape package with 1 hardwood tree in front yard
- Low maintenance Six-Panel insulated Composite front door
- Six foot Cedar fenced back yard with 3' gate on garage side
- **24 Professionally designed Brick Colors with Two-Tone Trim color combinations to choose from**
- 3'x 3' back patio
- Quality composition shingles with 20-year manufacturer's warranty
- Flat-panel textured interior doors
- Distinctive interior **Archways** (per plan) with 8' Ceilings heights
- Custom **Rounded Sheetrock Corners throughout entire home including windows**
- 25.5 ounce spun Carpet over 3/8" rebond pad
- Vinyl Entry
- **Design Center appointment (2 hours) with Professional Decorator**
- **Open floor plans, Big Rooms, Big Closets** (per plan)
- Every home has a "livability walk-thru" done prior to finish of design
- Partial Gutters

Kitchen Features

- **GE Appliance package** includes free-standing gas range, dishwasher and vent hood
- One-third Horsepower Disposal Unit
- Dual bowl Stainless steel sink
- **Timberlake 30" Kitchen Cabinets**
- **Bright White Staron solid surface countertops**
- **Ceramic Tile Backsplash (12x12 in size)**
- Large kitchens with open concept to breakfast and Texas Room (per plan)
- Vinyl flooring at kitchen/breakfast
- Ice-maker connection

Master Bedroom and Bath

- Texas-sized master bedrooms and bathrooms with huge closets (per plan)
- **Trophy Homes "SUPERSHOWER" sm glass slider doors, low maintenance fiberglass shower with 2-heads (one valve) and two-seats**
- **White or Ivory Staron solid surface vanity tops with drop-in bowls**
- **Delta high-quality plumbing fixtures**
- **Timberlake bath cabinets match kitchen**
- **Medicine Cabinet with Mirror**
- Privacy "jump duct" or transfer grilles for ventilation at bedrooms
- Full Vinyl flooring in bathroom
- Chrome towel bars and paper holders

Secondary Baths

- Low maintenance fiberglass tub and surround in Secondary Baths
- **White or Ivory Staron solid surface vanity tops with drop-in bowls**
- **Delta high-quality plumbing fixtures**
- **Timberlake bath cabinets match kitchen**
- **Medicine Cabinet with Mirror**
- Vinyl flooring
- Chrome towel bars and paper holders

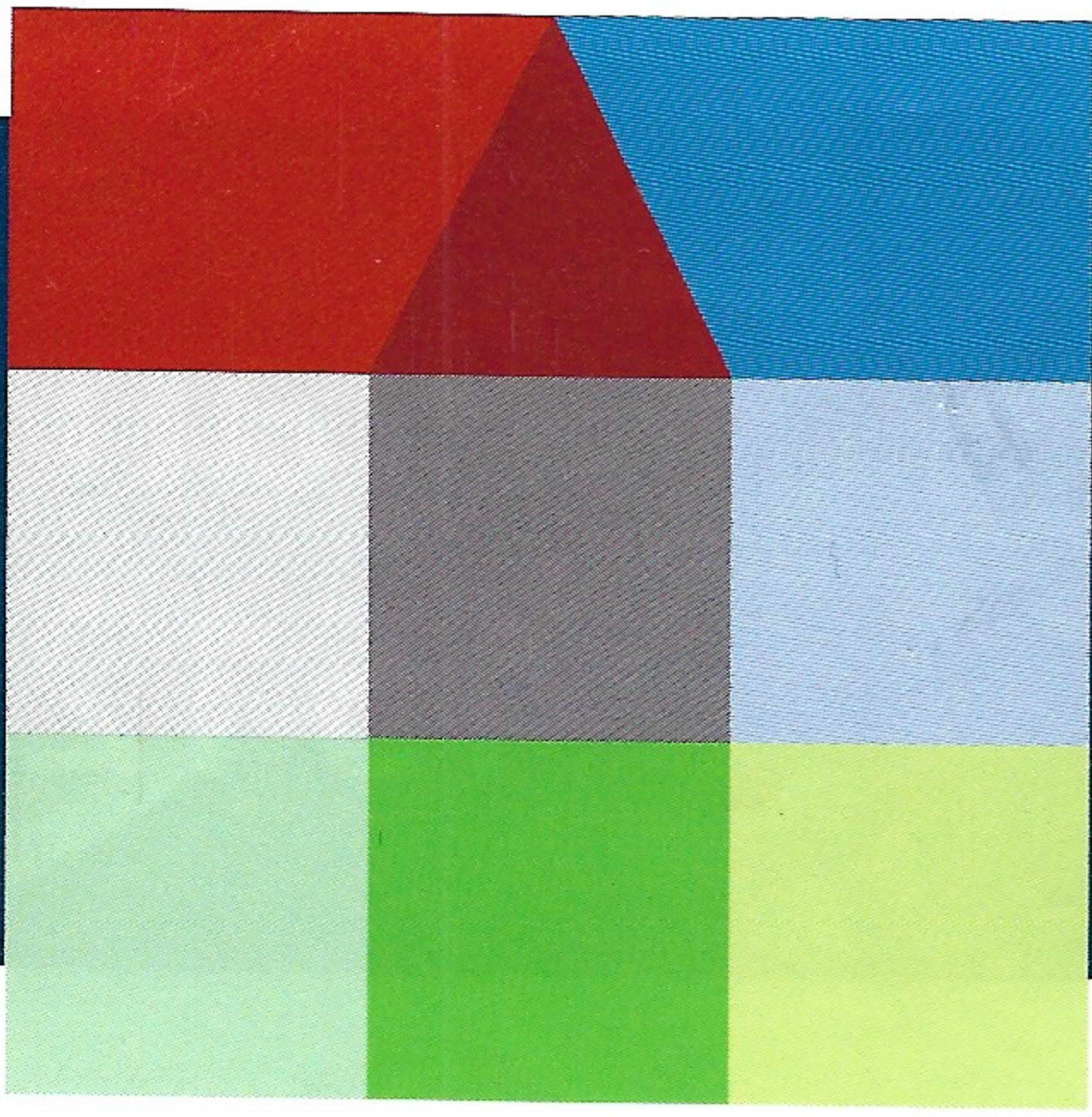
Energy Efficient Features

- **Rheem 12 SEER A/C units**
- **Champion Double Pane Low-E Thermally Efficient Windows**
- Digital Thermostat
- High efficiency gas furnace
- Efficient electric water heater in Garage
- **R-14 Exterior Walls (Dow R-3 Styrofoam Sheathing + R-11 Batts)**
- R-30 blow insulation in the attic; R-22 batts any sloped areas
- Polyfoam sealant around all windows, doors, outlets, and sole plate
- Attic vented with Air Hawks and Ridge Vents (per plan)
- R-6 Insulated ductwork

Safety, Engineering, and Electrical Features

- Professionally engineered post-tension stressed cable foundation; specifically designed by community
- **Professionally engineered frame design** vs. competitors who allow frame crew to "engineer" on-site
- Smoke Detectors per specification
- **Pre-Wired for 3 phone jacks & 3 cable outlets**
- 220 Outlet for electric dryer
- PWC 10-Year Owner's Warranty Program
- **BF Goodrich Flow Guard Gold CPVC non-corrosive plumbing system**
- GFI guarded outlets per specification
- Raised panel metal overhead garage door
- **Pre-Wired for Garage Door Opener**
- **Pre-Wired for Security System (1st floor doors and windows)**
- **Pre-Wired for Ceiling Fans in Texas-sized Family Room, Master Bedroom and Game Room**

*****Trophy Homes reserves the right to change specifications, prices, or plans without prior notification*****

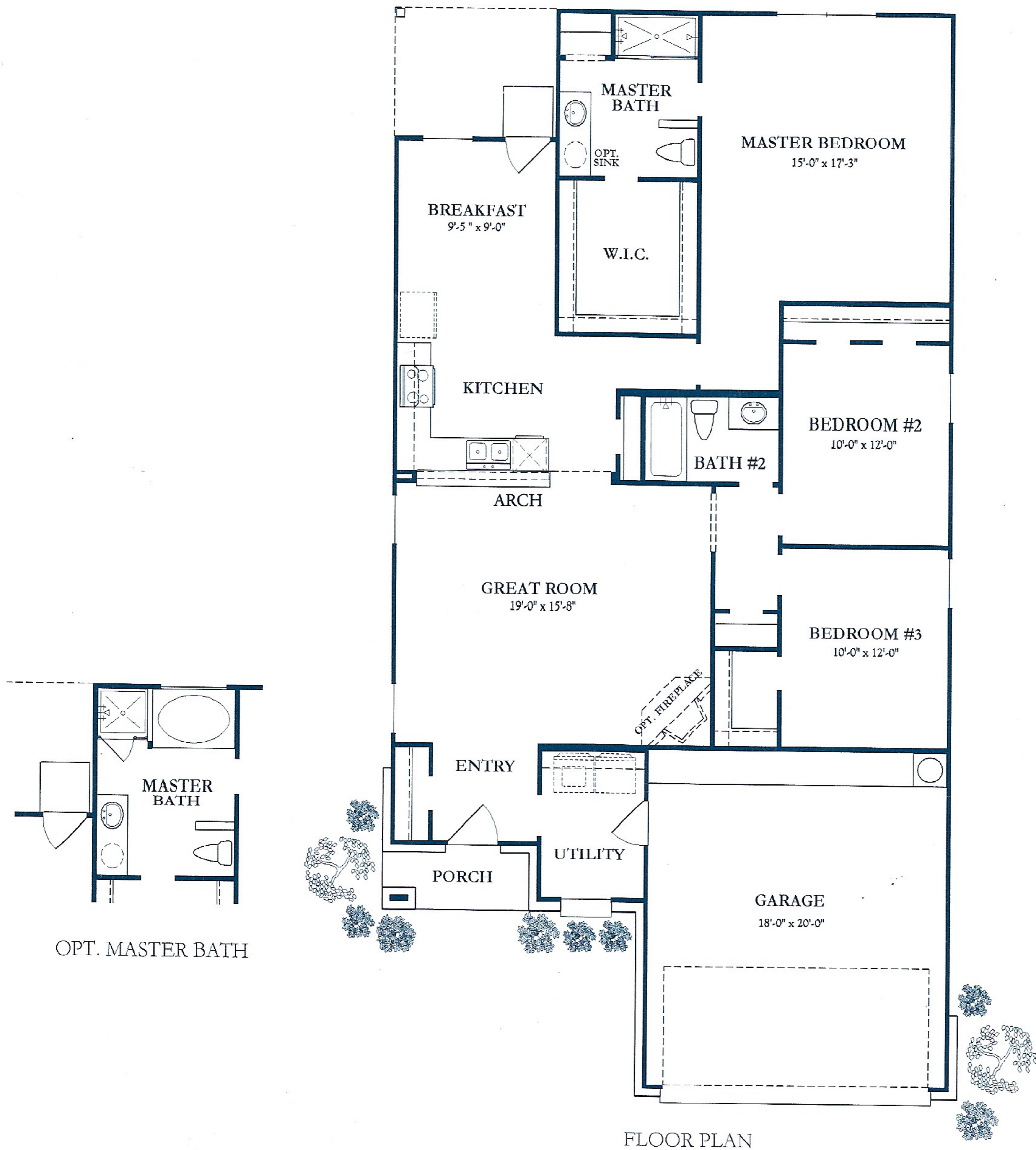


Floorplan

Plan 4512

1558 square feet

Trophy Homes



www.trophyhomes-tx.com

Plans, prices, specifications and square footages are approximate and subject to change without notice.

