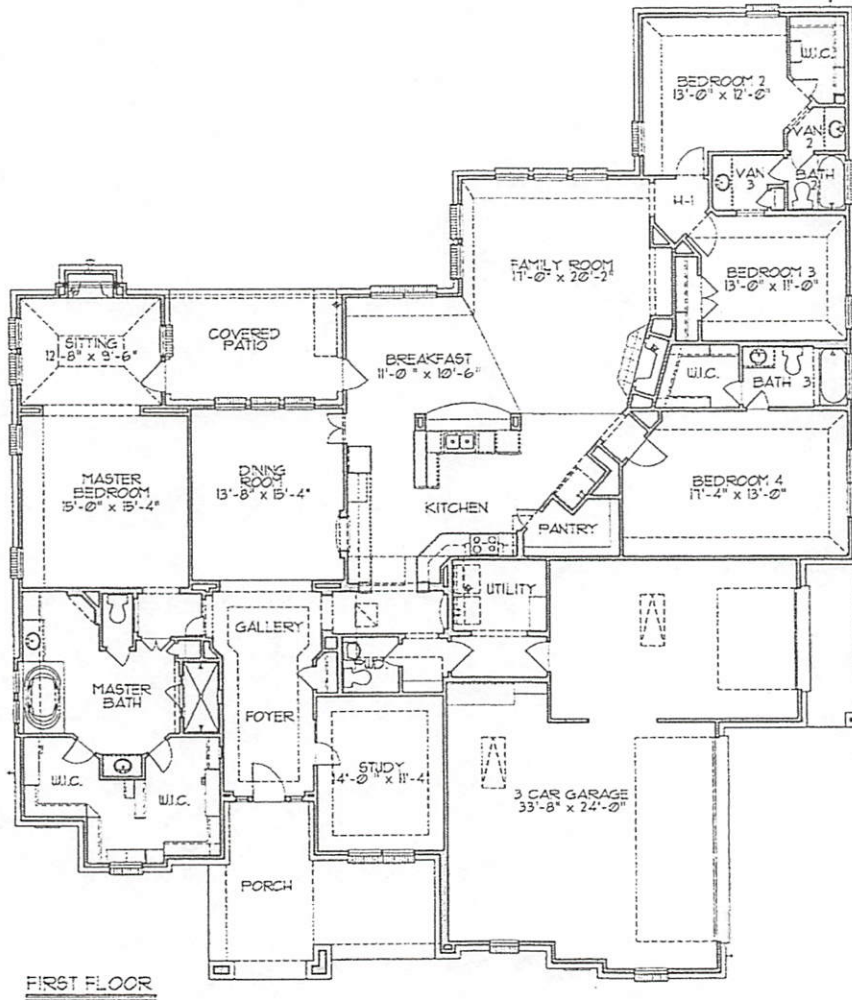


PLAN - S'30 - 3,445 sq.ft.

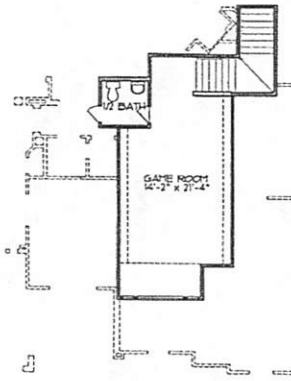


In an effort to constantly improve our plans, homes started in the future and some recently started homes under construction may have substantial differences from existing Trendmaker homes, including models, that may already be built in communities. Square footage is approximate and may vary per elevation.

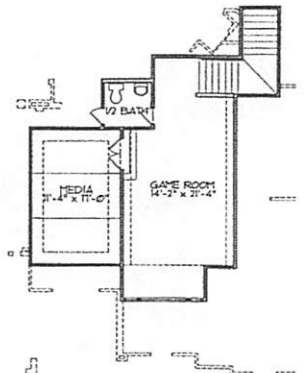
03.05.20'3

PLAN - S130 - 3,445 sq.ft.

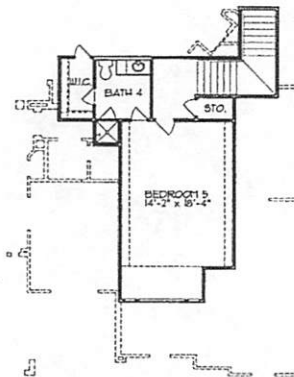
OPTIONS



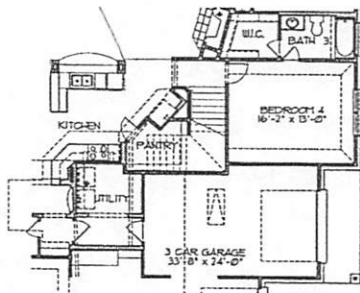
OPT. #2694  
GAMEROOM/1/2 BATH



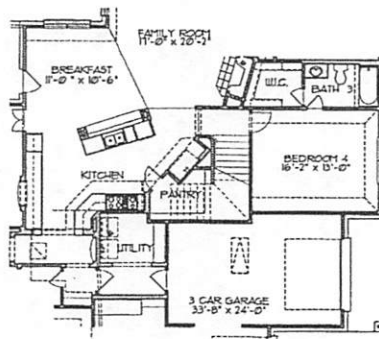
OPT. #2695  
GAMEROOM/MEDIA ROOM



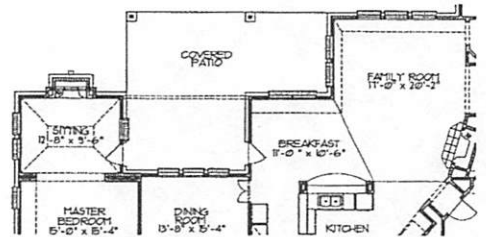
OPT. #2784  
BEDROOM 5/BATH 4



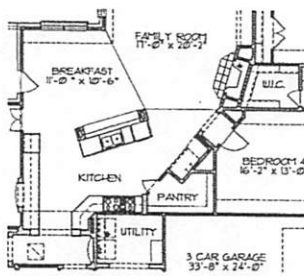
OPT. #2694/2695/2784  
STAIRS TO 2ND FLOOR



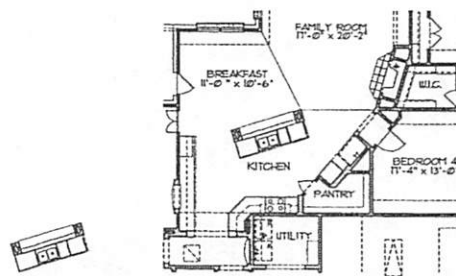
OPTION #2101 KITCHEN w/  
LVL. 6A GOURMET KITCHEN w/  
1 OPT. #2694/2695/2784



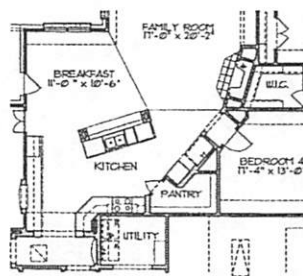
OPTION #2155  
EXT. COVERED PATIO



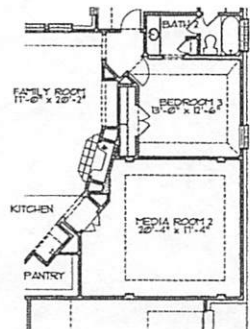
LVL. 6A GOURMET KITCHEN  
w/ OPT. #2101



OPTION #2332  
36" HIGH D.W.



OPTION #2101  
KITCHEN



OPTION #2635  
MEDIA ROOM 2

In an effort to constantly improve our plans, homes started in the future and some recently started homes under construction may have substantial differences from existing Trendmaker homes, including models, that may already be built in communities. Square footage is approximate and may vary per elevation.