



## Heartland Collection Features - Southern Trails

### ENERGY STAR® RATED BUILDER/ENERGY EFFICIENCY:

- Energy Star Ratings Performed to Environmental Protection Agency's Energy Star® Guidelines
- Exterior Air Filtration Damper
- Programmable Thermostat with Humidity Control
- 16-SEER Air Conditioning System
- Radiant Barrier Roof Decking
- (2) 40-Gallon High Efficiency Water Heaters in Homes with 3 or More Baths (per plan)
- R-38 Insulation in Flat Ceilings (where accessible)
- R-22 Insulation on Sloped Ceilings and Attic Walls
- R-13 Insulation and R-3 Sheathing on Exterior Walls (where applicable)
- Poly Seal Insulation Throughout to Minimize Air Infiltration and Ensure Energy Efficiency
- High Performance Multi-Layer Low E Insulated Windows for Added Energy Efficiency
- Tilt-out Sash on All Operable Windows
- Vinyl Window Frames in Tan Color

### CONSTRUCTION:

- Garage Door Opener with (2) Remotes
- Structured Wiring System to Meet or Exceed Development Specifications
- Wiring for Cable, Data, and Phone Outlets in All Bedrooms, Family Room, Study, Game Room, and Planning Center (per plan)
- Branch-and-Tee Plumbing System
- 3000-PSI, Post-Tension Foundation Certified by an Independent Engineer
- 3/4-Inch Tongue-and-Groove Subflooring Secured with Screws and Adhesive on Two-Story Homes
- Thorough Inspection Process Conducted at Critical Stages of Construction
- Quality Assurance Inspection Prior to New Home Orientation

### OUTSIDE YOUR NEW VILLAGE BUILDERS HOME:

- Weatherproof Fiber-Cement Siding with 30-Year Warranty
- Fully Fenced Rear Yard with One Walk Gate (per community guidelines)
- Full Sod in Front and Rear Yards
- Fully Automatic Irrigation System
- Full Gutters (per plan)
- 8' Mahogany Front Door with Insulated Leaded Glass Insert
- 8' Full Lite Back Patio Door
- Brick Front Porch
- 30-Year High Quality Dimensional Shingles
- Ridge Vents and Air Hawks with Continuous Soffit Vents
- Designer Coach Light at Entry and Garage (per plan)
- Hose Bibbs at Front and Rear of Home
- Genuine Fired Clay Brick
- Masonry Address Block
- Covered Concrete Patio with Ceiling Fan (per plan)
- Deadbolt Locks on all Exterior Doors
- Weatherproof Exterior Outlets at Front and Rear of Home
- Design Enhanced Steel Overhead Garage Door

### INTERIOR DESIGN CONSULTATION:

- All customers buying at pre-construction receive a complimentary (2) hour design consultation with a professional designer at the Village Builders Design Studio.

DESIGN  
STUDIO

681 Greens Pkwy, Ste. 200, Houston, TX 77067

VILLAGEBUILDERS.COM

The specific features in a home may vary from home to home and from one community to another. We reserve the right to substitute equipment, materials, appliances and brand names with items of equal or higher, in our sole opinion, value. Color and size variations may occur. The prices of our homes, included features, and available locations are subject to change without notice. Please see the actual home purchase agreement for additional information, disclosures, and disclaimers relating to the home and its features. Void where prohibited by law. Copyright © 2016, Lennar Corporation. Village Builders and the Village Builders logo are service marks of Lennar Corporation and/or its subsidiaries. 05/16.





## Heartland Collection Features - Southern Trails

### KITCHEN:

- Built-In Appliance Package
  - Stainless Steel Dishwasher
  - 30" Stainless Steel Self-Cleaning Oven
  - 36" Stainless Steel Gas Cooktop with Sealed Burners
  - Stainless Steel Microwave with Soft Touch Panel
- Designer Tile in Kitchen and Breakfast Area
- 42" Stained Cabinets
- Granite Countertops with Choice of Edge
- Natural Stone Backsplash
- Deep Dual-Basin Stainless Steel Undermount Sink
- Oil-Rubbed Bronze Gourmet Pull-out Faucet
- Insulated Garbage Disposal
- Recessed LED Lighting in Kitchen and Breakfast Area
- Pendant Lighting at Bar (per plan)
- Under-cabinet lighting
- Walk-In Pantry (per plan)
- Water Purification System at Sink; Filters Installed After Closing

### MASTER BATH:

- Designer Tile on Bath Floor, Shower Walls, and Tub Surround
- Recessed Shower with Mesh Tile Flooring
- Oval Garden Tub
- Opaque Rain Glass Window at Tub (per plan)
- Climate-Controlled Master Closet
- High-High Stained Vanity Cabinets
- Dual Cultured Marble Vanity Tops
- Coordinating Medicine Cabinet (per plan)
- Oil-Rubbed Bronze Washerless Faucets
- Oil-Rubbed Bronze Plumbing Accessories
- Elongated Commode

### SECONDARY BATHS:

- Designer Tile on Bath Floors and Shower Surrounds
- Stained Vanity Cabinets
- Cultured Marble Vanity Tops
- Coordinating Medicine Cabinet (per plan)
- Oil-Rubbed Bronze Washerless Faucets
- Oil-Rubbed Bronze Plumbing Accessories
- Elongated Commode

### POWDER ROOM:

- Designer Tile Flooring
- Porcelain Pedestal Sink
- Oil-Rubbed Bronze Wide Spread Washerless Faucet
- Oil-Rubbed Bronze Plumbing Accessories
- Elongated Commode
- Decorative Mirror

### UTILITY ROOM:

- Designer Tile Flooring
- Overhead Rod and Shelf for Storage
- Electric and Gas Dryer Connections
- Freezer Space (per plan)

### INSIDE YOUR NEW VILLAGE BUILDERS HOME:

- Stylish Hardware on all Operable cabinets Throughout the Home
- Designer Tile in Foyer
- Automated Keyless Deadbolt Entry
- Oil-Rubbed Bronze Door Hardware
- Continuous-Filament Carpet with Stainguard
- 1/2-Inch, 6-Pound Rebond Carpet Pad
- Crown Moulding in Master Bedroom, Family Room, Kitchen/Breakfast, Dining Room, Study and Foyer (per plan)
- 5 1/4-Inch Base Boards Throughout First Floor Living Area
- Chair Rail in Dining Room
- 5-Blade Ceiling Fan with Light Kit in Master Bedroom, Secondary Bedrooms, Family Room, Study and Game Room
- Direct Vent Fireplace with gas logs and Remote Control
- Cast Stone Fireplace Surround
- Divided Lite Windows to Complement Front Elevations
- Rounded Drywall Corners Throughout Home (excludes window returns)
- Monterrey Drag Textured Walls and Ceilings
- 8' Raised-panel Interior Doors on First Floor
- V-Groove Full Lite French Doors at Study (per plan)
- Iron Stair Balusters (per plan)
- Stained Starter Step
- Designer Light Fixtures Throughout Home
- Decora® Rocker Switches Throughout Home
- Dimmer Switch at Dining Room
- Security System with Motion Detector, 2 Keypads and Sensors at First Floor Windows and Exterior Doors
- Recessed LED Lighting Throughout Home

DESIGN  
STUDIO

681 Greens Pkwy, Ste. 200, Houston, TX 77067

VILLAGEBUILDERS.COM

# Bristol 4632

Heardland Collection

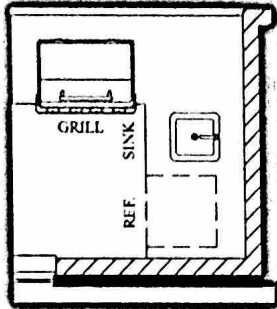
3135 Sq. Ft.

4 Bedrooms

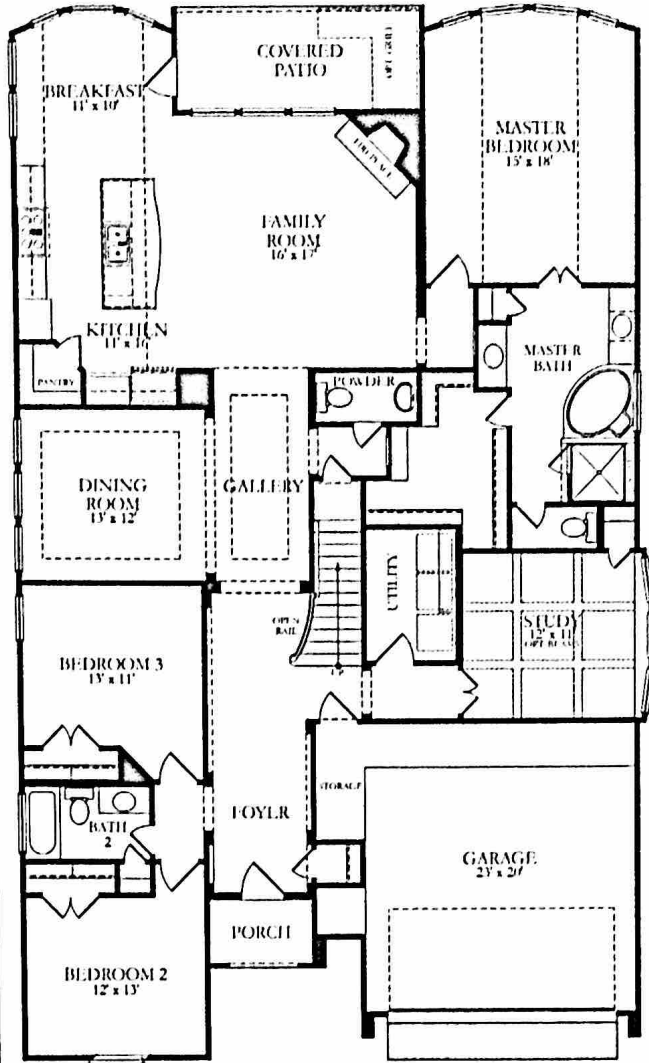
3.5 Bathrooms

2 Car Garage

Options:

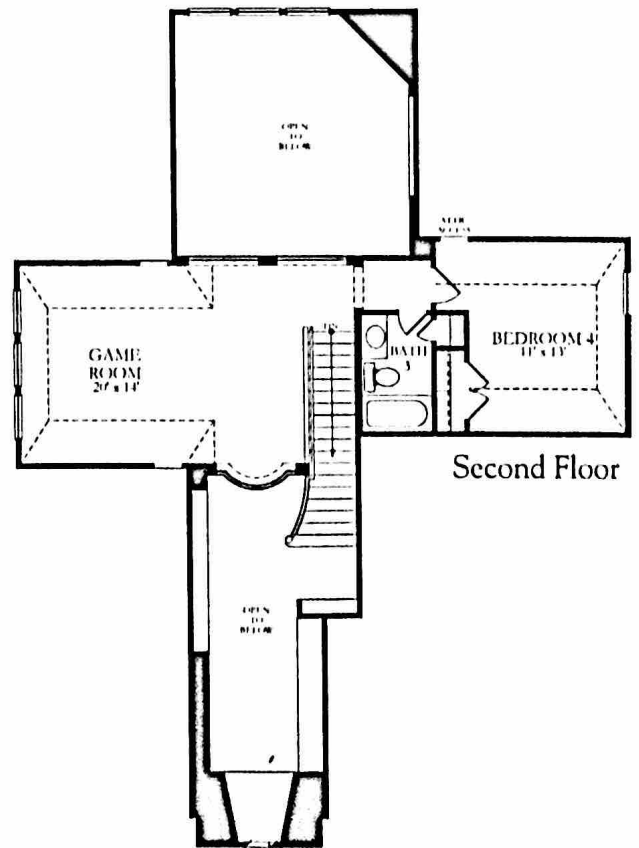


## First Floor



VILLAGEBUILDERS.COM

THIS FLOOR PLAN/DESCRIPTIONS ARE ARTIST'S CONCEPTS AND MAY NOT REPRESENT THE ACTUAL CONSTRUCTION. THESE DIMENSIONS ARE APPROXIMATE AND SHOULD NOT BE USED AS A BASIS FOR CONSTRUCTION. GARAGE DIMENSIONS VARY FROM HOME TO HOME AND MAY NOT ACCOMMODATE ALL VEHICLES. STATED DIMENSIONS AND SQUARE FOOTAGE ARE APPROXIMATE AND SHOULD NOT BE USED AS REPRESENTATION OF THE HOME'S PRESENT OR ACTUAL SIZE. ANY DIMENSIONS OR SQUARE FOOTAGE SHOULD BE VERIFIED BY A PROFESSIONAL SURVEYOR. THIS DESCRIPTION OF MODEL IS NOT A CONTRACT. GARAGE OR ANY HOME OR OTHER DESCRIPTION OF THE MODEL IN WHICH THE SQUARE FOOTAGE WAS ESTIMATED AND SHOULD NOT BE CONSIDERED TO INDICATE EXACTLY WHAT IS SUPPLIED. VOID WHERE PROHIBITED BY LAW. Copyright © 2010 Village Builders Corporation. All rights reserved. Village Builders and Village Builders logo are registered service marks of Village Builders Corporation and/or its subsidiaries. (622) 761-2316



## Second Floor