



EAST END ON THE BAYOU, PHASE 3



PHASE 3



2757 FREUND (CASTELLO PLAN)

MEDITERRANEAN INSPIRED HOMES BROUGHT TO YOU BY DORADO BUILDERS WITHIN THE EAST END ON THE BAYOU MASTER PLANNED URBAN DEVELOPMENT, LOCATED ON THE SOUTH BANK OF HOUSTON'S HISTORIC BUFFALO BAYOU LESS THAN ONE MILE FROM THE CENTRAL BUSINESS DISTRICT, SPORTS STADIUMS, & ENTERTAINMENT.

- EXCELLENT CONSTRUCTION QUALITY AND ENERGY EFFICIENT
- GREAT VIEWS OF DOWNTOWN
- HUGE ROOFTOP TERRACE
- CONVENIENT LOCATION TO WORK & PLAY
- CONNECTED TO BUFFALO BAYOU HIKE AND BIKE TRAILS (ACROSS THE BAYOU FROM THE EAST RIVER PROJECT)
- FIBEROPTIC INTERNET/"SMART" HOMES

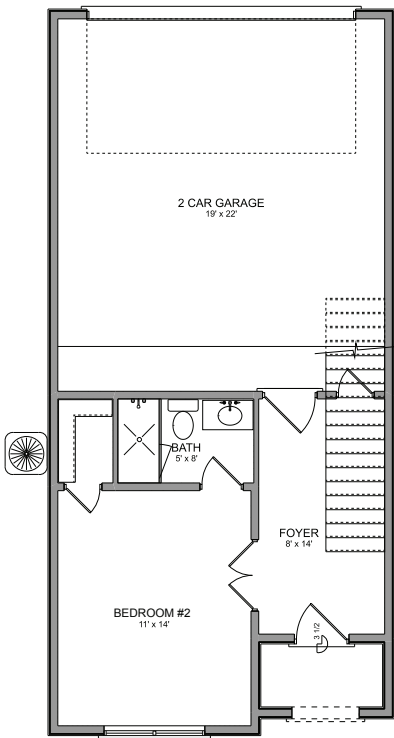


(713) 840-1051 | info@dorado-builders.com

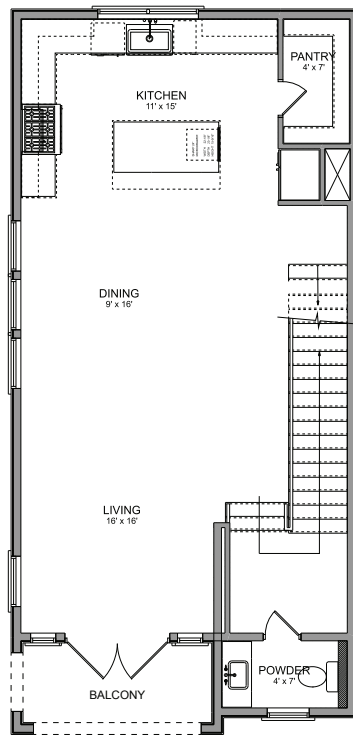
CASTELLO FLOORPLAN

2757 FREUND

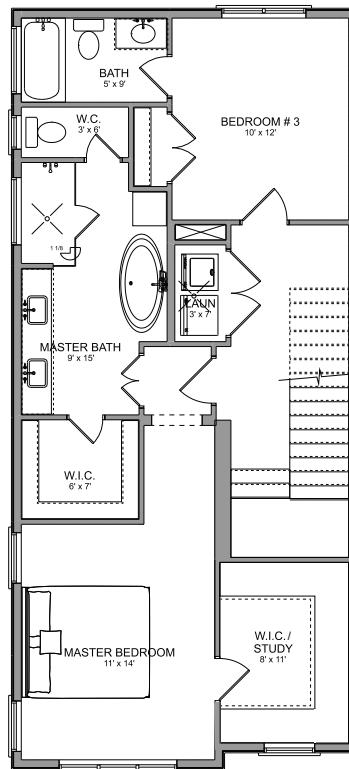
4-STORY, 3 BEDROOMS, 3 1/2 BATHS, 2-CAR GARAGE, HUGE ROOFTOP TERRACE,
2218 SQ FT LIVING SPACE & 500+ SQ FT EXTERIOR SPACE



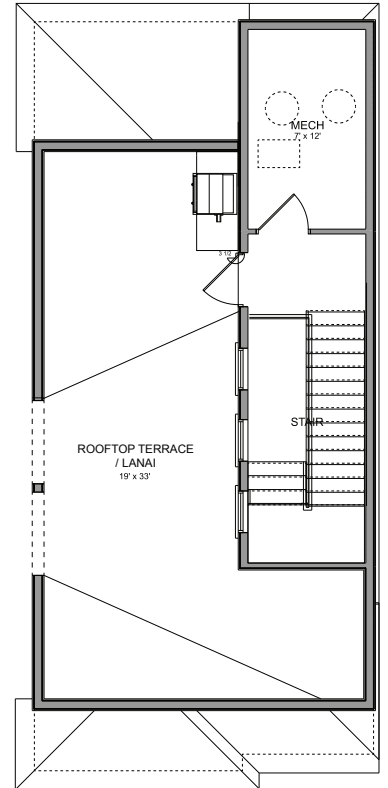
2757 FREUND FIRST FLOOR



2757 FREUND SECOND FLOOR



2757 FREUND THIRD FLOOR



2757 FREUND ROOF TOP TERRACE



No guarantee is made that the features, amenities, layouts, views, materials and facilities depicted by photos, renderings and/or sketches or otherwise described herein will be provided, or, if provided, will be of the same type, size or nature as depicted or described, and you shall not rely on the information contained herein. Renderings, photos and sketches may be inaccurate. The Developer may make modifications and changes to the project and information provided herein without notice.