

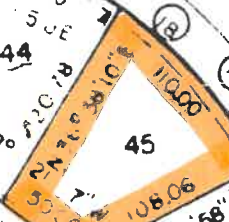
ROYALE

GREENS

ST. ANDREWS PLACE

LOOP

CAPE



Map containing numerous bearings and distances for various lots, including: N 65° 12' 12" W, S 74° 0' 27" W, N 33° 29' 14" E, N 80° 20' 33" E, N 57° 19' 5" E, N 37° 32' 16" E, N 9° 30' 00" E, N 16° 07' 30" E, N 48° 06' 06" E, N 84° 49' 00" E, N 53° 24' 15" E, N 45° 30' 00" W, N 49° 20' 00" E, N 49° 30' 00" E, N 49° 26' 10" E, N 65° 25' 27" E, N 29° 14' 02" E, N 76° 23' 45" E, N 76° 50' 22" E, N 76° 53' 58" E, N 26° 30' 10" W, N 22° 08' 54" E, N 37° 27' 19" E, N 37° 20' 48" E, N 37° 24' 22" E, N 36° 25' E, N 54° 24' 15" E, N 45° 30' 00" W, N 49° 20' 00" E, N 49° 30' 00" E, N 49° 26' 10" E, N 65° 25' 27" E, N 29° 14' 02" E, N 76° 23' 45" E, N 76° 50' 22" E, N 76° 53' 58" E, N 26° 30' 10" W, N 22° 08' 54" E, N 37° 27' 19" E, N 37° 20' 48" E, N 37° 24' 22" E, N 36° 25' E, N 54° 24' 15" E.