



# 2823 Fairway Drive

Being Lot Ten (10), in Block Two (2), of Amended Final Plat of Windsor Estates, Section Two (2), a subdivision in Galveston County, Texas, according to the Map or Plat thereof recorded in Volume 18, Pages 986 and 987 in the Office of the County Clerk of Galveston County, Texas.

## stewart title

Real partners. Real possibilities.™



### LEGEND

- 1/2" ROD FOUND
- ⊗ 1/2" ROD SET
- 1" PIPE FOUND
- ⊗ "X" FOUND/SET
- ⊗ 5/8" ROD FOUND
- ⊕ POINT FOR CORNER
- FENCE POST FOR CORNER
- CM CONTROLLING MONUMENT
- AC AIR CONDITIONER
- PE POOL EQUIPMENT
- TE TRANSFORMER PAD
- COLUMN
- POWER POLE
- ▲ UNDERGROUND ELECTRIC
- △ OVERHEAD ELECTRIC
- OHP— OVERHEAD ELECTRIC POWER
- OES— OVERHEAD ELECTRIC SERVICE
- CHAIN LINK
- WOOD FENCE 0.5' WIDE TYPICAL
- |— IRON FENCE
- X— BARBED WIRE
- DOUBLE SIDED WOOD FENCE
- //— EDGE OF ASPHALT
- ▲— EDGE OF GRAVEL
- ▨ CONCRETE
- ▨ COVERED AREA

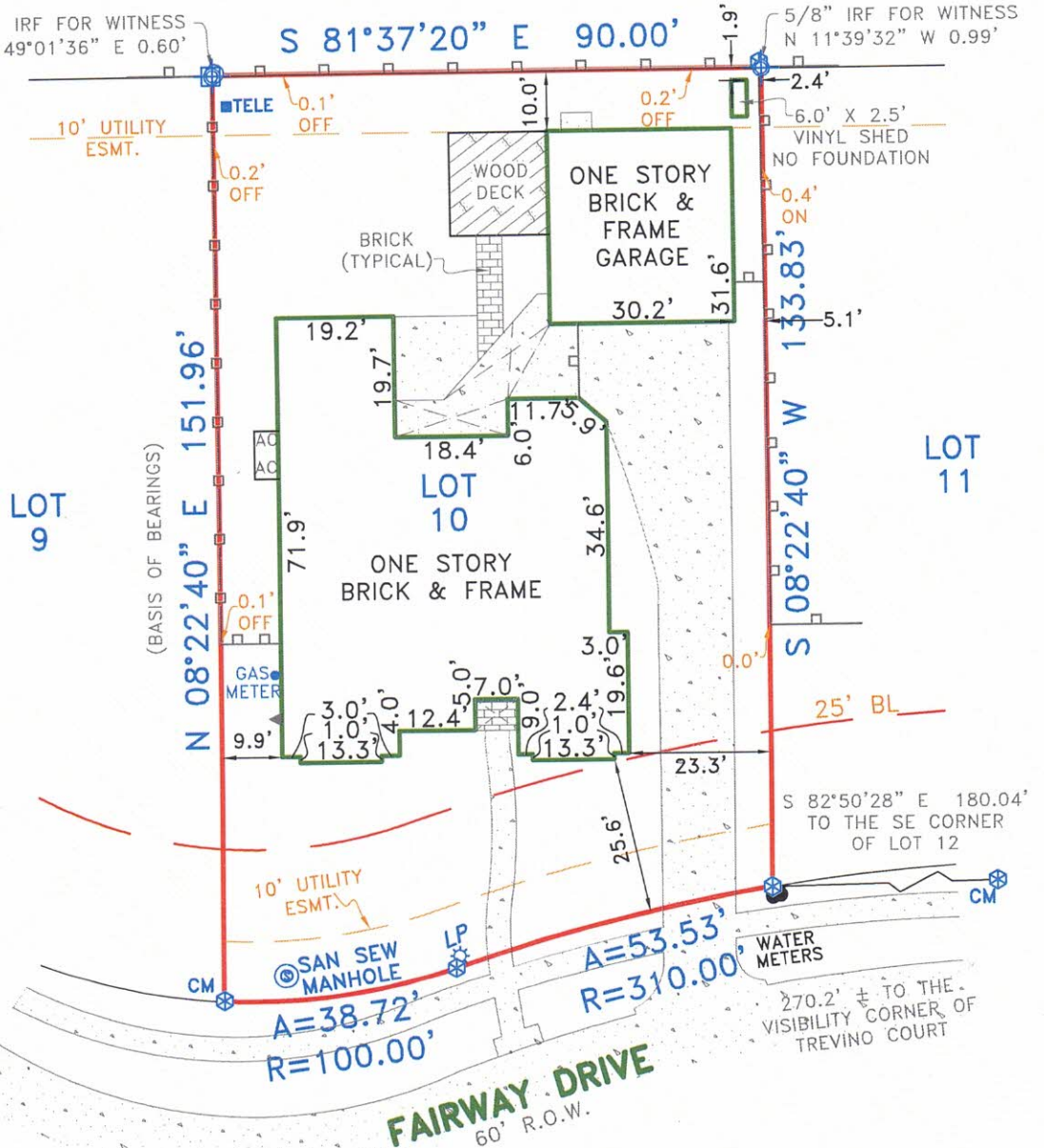


15' AMOCO PIPELINE EASMENT  
BOOK 1881, PAGES 232-234

1/2" IRF FOR WITNESS  
N 49°01'36" E 0.60'

S 81°37'20" E 90.00'

5/8" IRF FOR WITNESS  
N 11°39'32" W 0.99'



EXCEPTIONS:

### NOTES:

NOTE: BEARINGS, EASEMENTS AND BUILDING LINES ARE BY RECORDED PLAT UNLESS OTHERWISE NOTED.