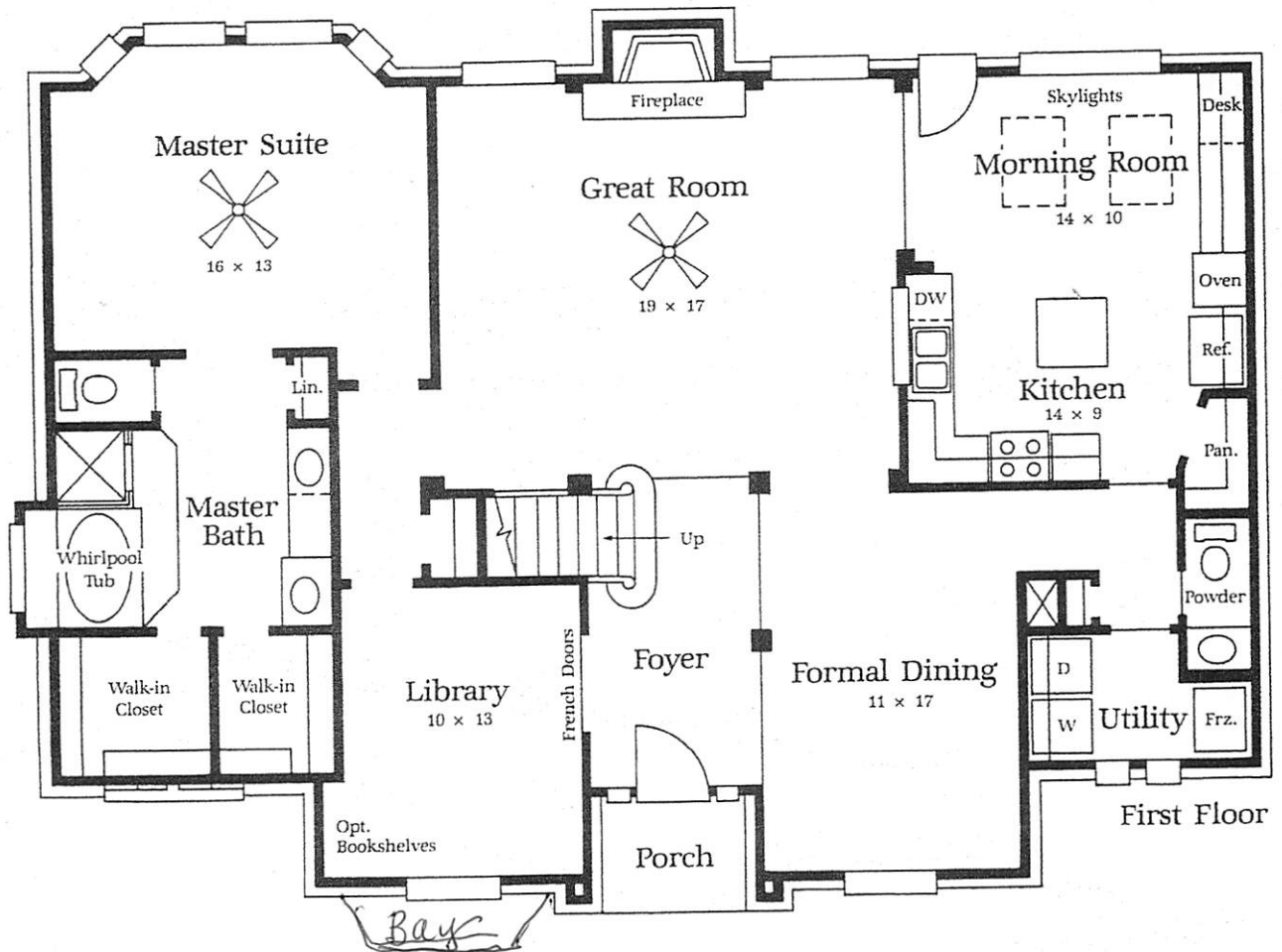


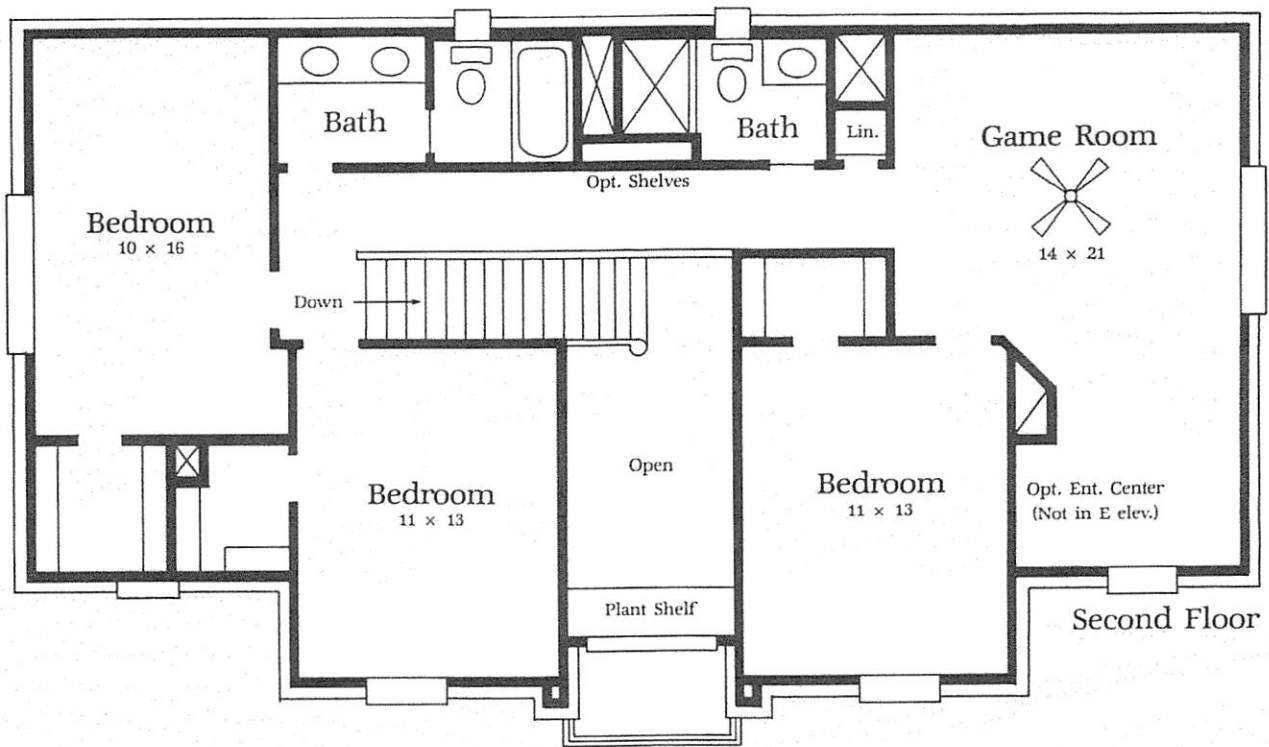
MUNICH

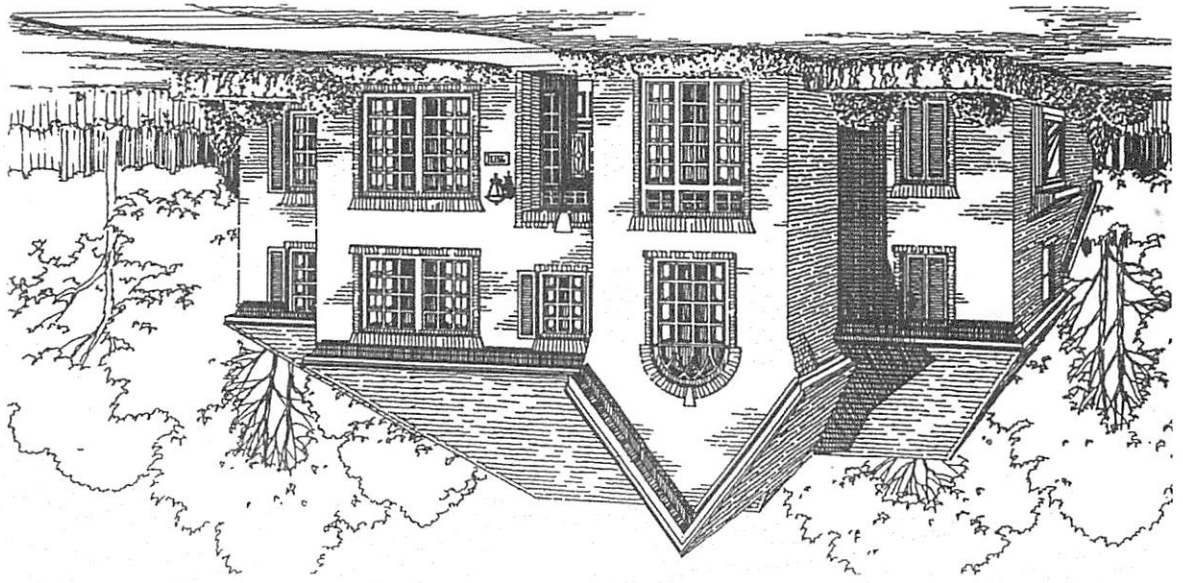
PLAN 366 • 3000 SQ. FT.

- Dramatic two-story foyer.
- Gourmet kitchen features island workspace, desk, walk-in pantry and skylights.
- Cozy library with French doors and optional bookshelves.
- Spacious master suite is highlighted by a bay window sitting area.
- Luxurious master bath features box-out window at tub, high/low vanities, his and hers walk-in closets and make-up desk.
- Three upstairs bedrooms all feature walk-in closets.

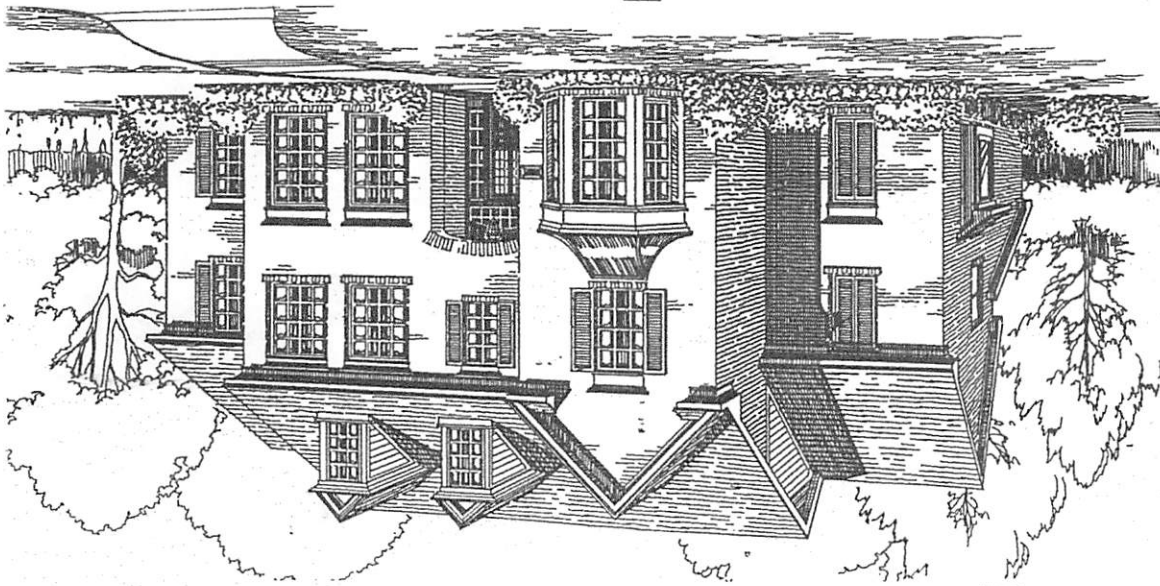


Window placement, roof line and porches may vary by elevation. Square footage and room dimensions are approximate. Variances in square footage may occur in different elevations or when different exterior materials are used. Plans, specifications and special features are subject to change without notice.

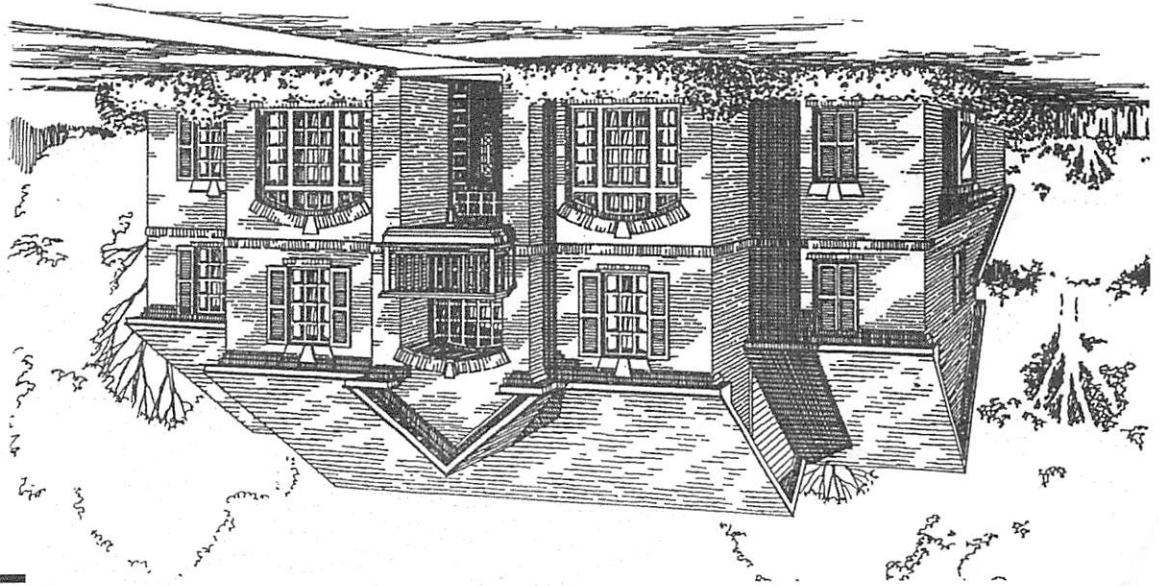




E



F



PLAN 366 • 3000 SQ. FT.

VILLAGE BUILDERS

MUNICH