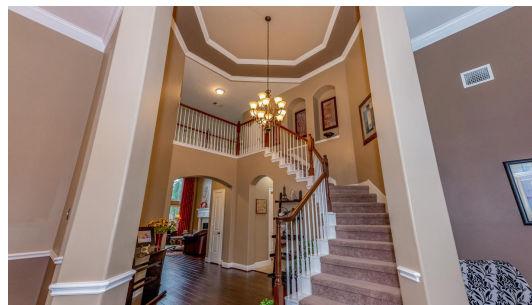


12505 PEPPER CREEK LN
PEARLAND, TEXAS 77584



Magnificent entry with rotunda ceiling and quality and detail craftsmanship throughout! Come home to this 4 bed, 3/1 bath, formal dining and den/study, gameroom, media room, covered patio with a huge backyard and rare 3 side-by-side car garage. 1st floor with hardwood floors and cozy carpet in the bedrooms and entire second floor. Large and open kitchen with miles of cabinets and granite countertops, island, breakfast bar, under cabinet lighting, stainless steel appliances and deep walk-in pantry. Master bedroom with bay windows and spa-like en-suite bath. All bedrooms with walk-in/double wide closets, ceilings fans. Luxurious Southern Trails community with clubhouse, fitness center, 8000 sq ft pool, miles of hike and bike trails, glistening lakes. Zoned to Alvin ISD's coveted schools: Brothers Elem, McNair Junior, football state champs -Shadow Creek High. Build your family's memories right here, a home and community you can grow into. Superior location-min from Btwy 8, 288, PTC, TMC! For more information, photos and 24/7 Open House 3D Virtual Tour, go to www.12505PepperCreekLn.com.

4 BEDROOMS | 3/1 BATHROOMS | 3199 SQFT. | \$350,000



GINA TRAN
832-721-8193

OFFICE: 281-310-0SDR
GINA.TRAN@SDRSELLS.COM
WWW.SOLDBYGINA.US



THE SONS &
DAUGHTERS TEAM

CENTURY 21
EXCLUSIVE PROPERTIES