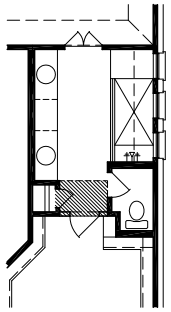
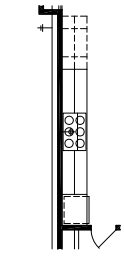


The Cabot 3499

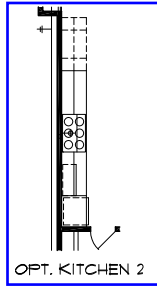
3434 Sq Ft



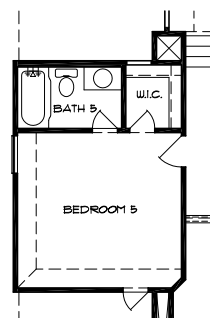
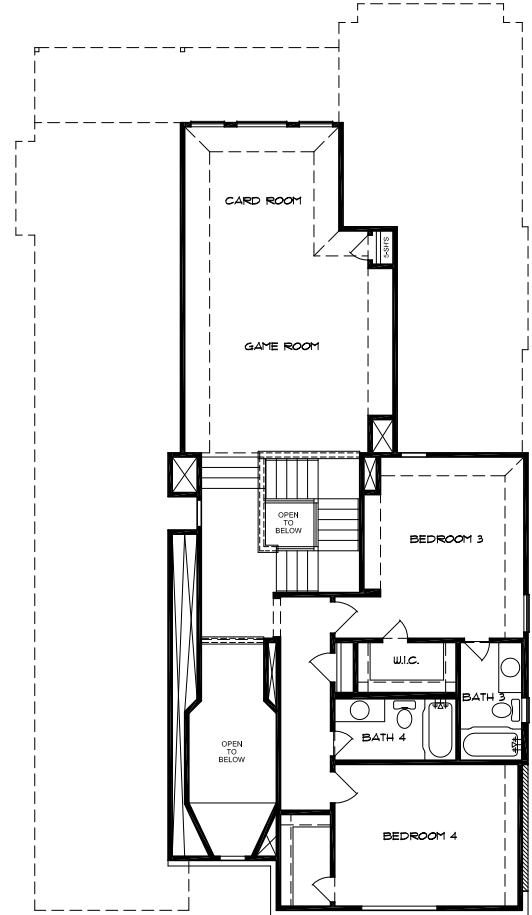
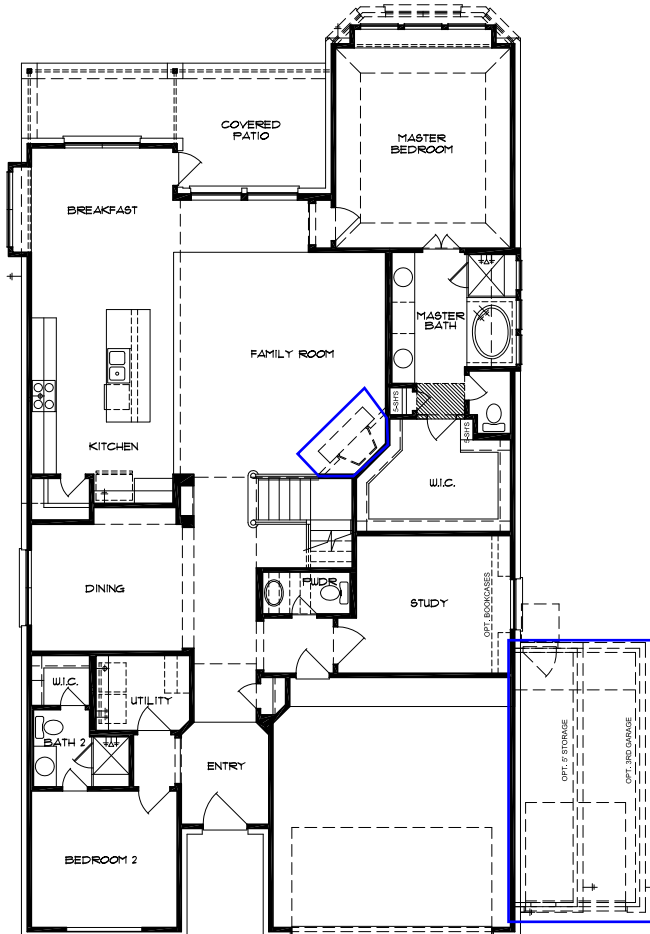
OPT. WALK-IN SHOWER AT MASTER BATH



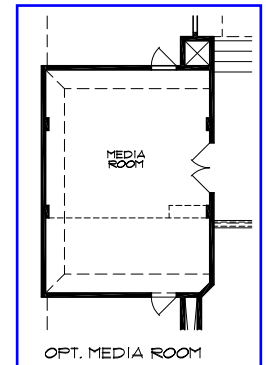
OPT. KITCHEN 1



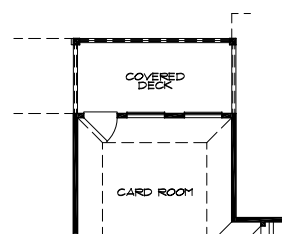
OPT. KITCHEN 2



OPT. BEDROOM 5/ BATH 5



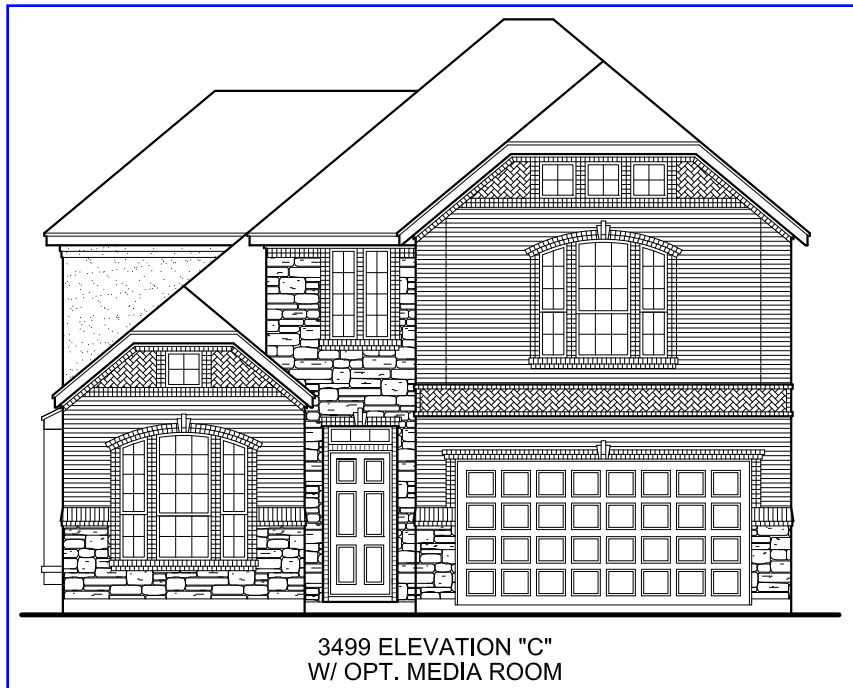
OPT. MEDIA ROOM



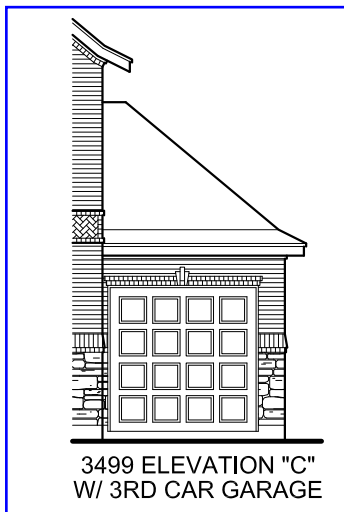
OPT. COVERED DECK



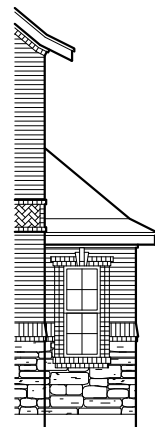
3499 ELEVATION "C"



3499 ELEVATION "C"
W/ OPT. MEDIA ROOM



3499 ELEVATION "C"
W/ 3RD CAR GARAGE



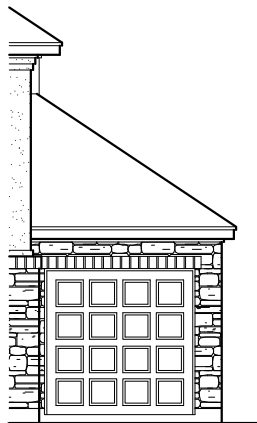
3499 ELEVATION "C"
W/ 5' STORAGE



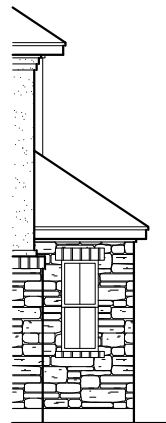
3499 ELEVATION "D"



3499 ELEVATION "D"
W/ OPT. MEDIA ROOM



3499 ELEVATION "D"
W/ 3RD CAR GARAGE



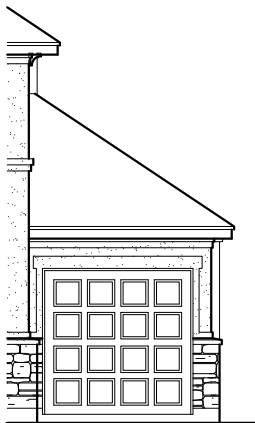
3499 ELEVATION "D"
W/ 5' STORAGE



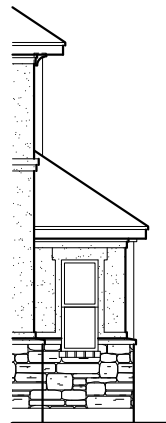
3499 ELEVATION "E"



3499 ELEVATION "E"
W/ OPT. MEDIA ROOM



3499 ELEVATION "E"
W/ 3RD CAR GARAGE



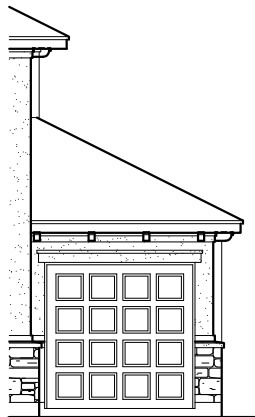
3499 ELEVATION "E"
W/ 5' STORAGE



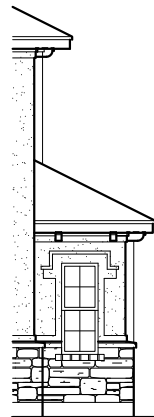
3499 ELEVATION "F"



3499 ELEVATION "F"
W/ OPT. MEDIA ROOM



3499 ELEVATION "F"
W/ 3RD CAR GARAGE



3499 ELEVATION "F"
W/ 5' STORAGE