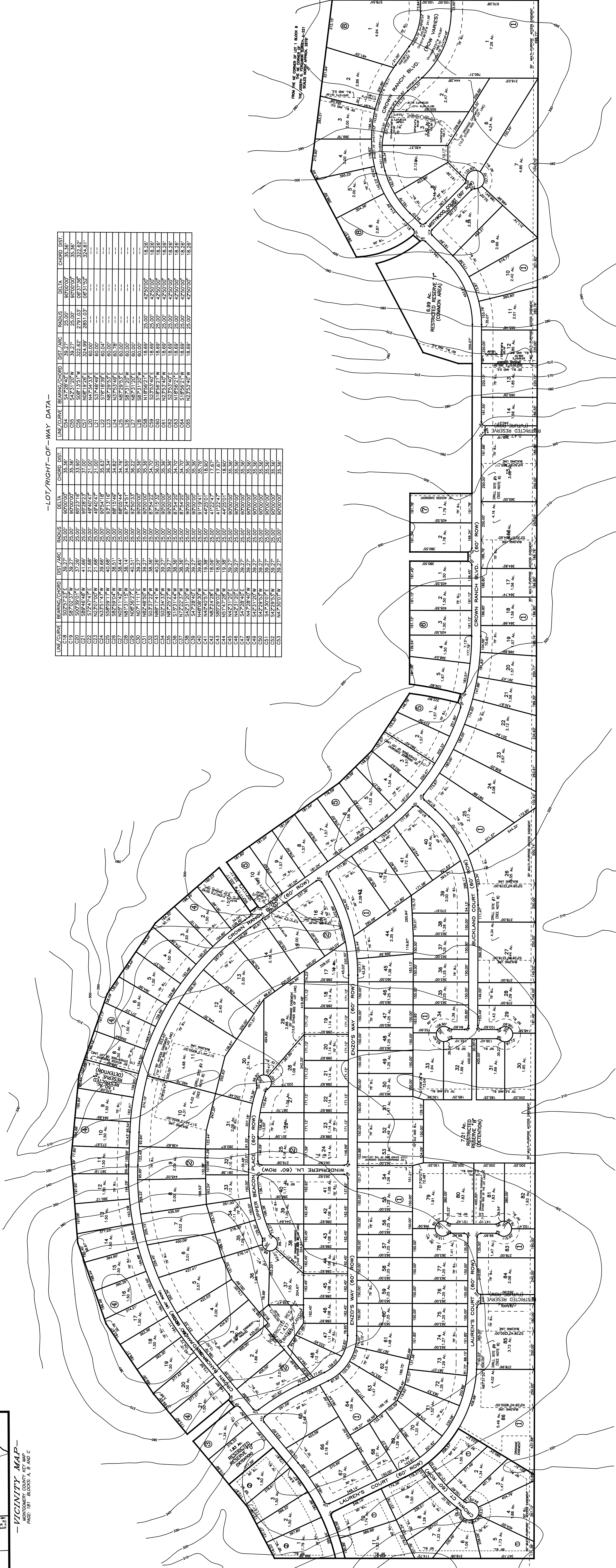


— VICINITY MAP —
MONTAGUE COUNTY, TEXAS
PAGE: 181 BLOCKS A, B AND C

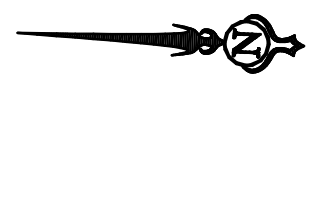
— LOT/RIGHT-OF-WAY DATA —

LINE/CURVE	BEARING/CURVE	DIST. / ARC.	RADIUS	DELTA	CHORD	CHORD DIST.
C18	S87°57'23"E	39.27	25.00	97°00'00"	35.36	35.36
C19	S87°57'23"E	39.27	25.00	97°00'00"	35.36	35.36
C20	S87°57'23"E	39.27	25.00	97°00'00"	35.36	35.36
C21	S87°57'23"E	39.27	25.00	97°00'00"	35.36	35.36
C22	S87°57'23"E	39.27	25.00	97°00'00"	35.36	35.36
C23	S87°57'23"E	39.27	25.00	97°00'00"	35.36	35.36
C24	S87°57'23"E	39.27	25.00	97°00'00"	35.36	35.36
C25	S87°57'23"E	39.27	25.00	97°00'00"	35.36	35.36
C26	S87°57'23"E	39.27	25.00	97°00'00"	35.36	35.36
C27	S87°57'23"E	39.27	25.00	97°00'00"	35.36	35.36
C28	S87°57'23"E	39.27	25.00	97°00'00"	35.36	35.36
C29	S87°57'23"E	39.27	25.00	97°00'00"	35.36	35.36
C30	S87°57'23"E	39.27	25.00	97°00'00"	35.36	35.36
C31	S87°57'23"E	39.27	25.00	97°00'00"	35.36	35.36
C32	S87°57'23"E	39.27	25.00	97°00'00"	35.36	35.36
C33	S87°57'23"E	39.27	25.00	97°00'00"	35.36	35.36
C34	S87°57'23"E	39.27	25.00	97°00'00"	35.36	35.36
C35	S87°57'23"E	39.27	25.00	97°00'00"	35.36	35.36
C36	S87°57'23"E	39.27	25.00	97°00'00"	35.36	35.36
C37	S87°57'23"E	39.27	25.00	97°00'00"	35.36	35.36
C38	S87°57'23"E	39.27	25.00	97°00'00"	35.36	35.36
C39	S87°57'23"E	39.27	25.00	97°00'00"	35.36	35.36
C40	S87°57'23"E	39.27	25.00	97°00'00"	35.36	35.36
C41	S87°57'23"E	39.27	25.00	97°00'00"	35.36	35.36
C42	S87°57'23"E	39.27	25.00	97°00'00"	35.36	35.36
C43	S87°57'23"E	39.27	25.00	97°00'00"	35.36	35.36
C44	S87°57'23"E	39.27	25.00	97°00'00"	35.36	35.36
C45	S87°57'23"E	39.27	25.00	97°00'00"	35.36	35.36
C46	S87°57'23"E	39.27	25.00	97°00'00"	35.36	35.36
C47	S87°57'23"E	39.27	25.00	97°00'00"	35.36	35.36
C48	S87°57'23"E	39.27	25.00	97°00'00"	35.36	35.36
C49	S87°57'23"E	39.27	25.00	97°00'00"	35.36	35.36
C50	S87°57'23"E	39.27	25.00	97°00'00"	35.36	35.36
C51	S87°57'23"E	39.27	25.00	97°00'00"	35.36	35.36
C52	S87°57'23"E	39.27	25.00	97°00'00"	35.36	35.36
C53	S87°57'23"E	39.27	25.00	97°00'00"	35.36	35.36

LINE/CURVE	BEARING/CURVE	DIST. / ARC.	RADIUS	DELTA	CHORD	CHORD DIST.
C54	S42°51'20"E	39.27	25.00	97°00'00"	35.36	35.36
C55	S42°51'20"E	39.27	25.00	97°00'00"	35.36	35.36
C56	S42°51'20"E	39.27	25.00	97°00'00"	35.36	35.36
C57	S42°51'20"E	39.27	25.00	97°00'00"	35.36	35.36
C58	S42°51'20"E	39.27	25.00	97°00'00"	35.36	35.36
C59	S42°51'20"E	39.27	25.00	97°00'00"	35.36	35.36
C60	S42°51'20"E	39.27	25.00	97°00'00"	35.36	35.36
C61	S42°51'20"E	39.27	25.00	97°00'00"	35.36	35.36
C62	S42°51'20"E	39.27	25.00	97°00'00"	35.36	35.36
C63	S42°51'20"E	39.27	25.00	97°00'00"	35.36	35.36
C64	S42°51'20"E	39.27	25.00	97°00'00"	35.36	35.36
C65	S42°51'20"E	39.27	25.00	97°00'00"	35.36	35.36



CONTOURS WERE GENERATED USING USGS QUAD MAPS
AND ARE NOT FIELD VERIFIED.



SCALE: 1"=300'
DATE: 10/25/06

— SALES PLAT —
— CROWN RANCH —
SECTION 1 AND 1A