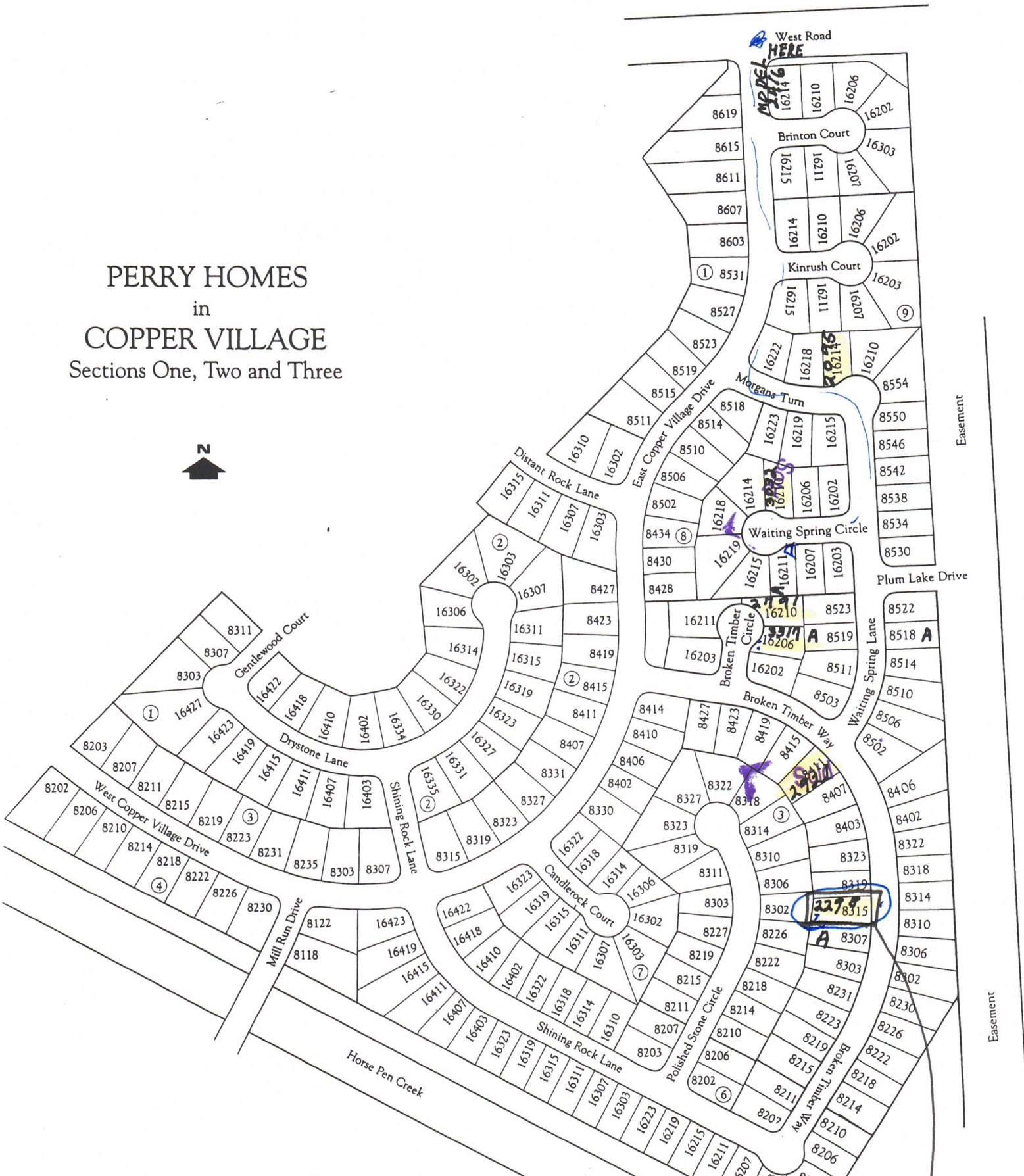


PERRY HOMES

in

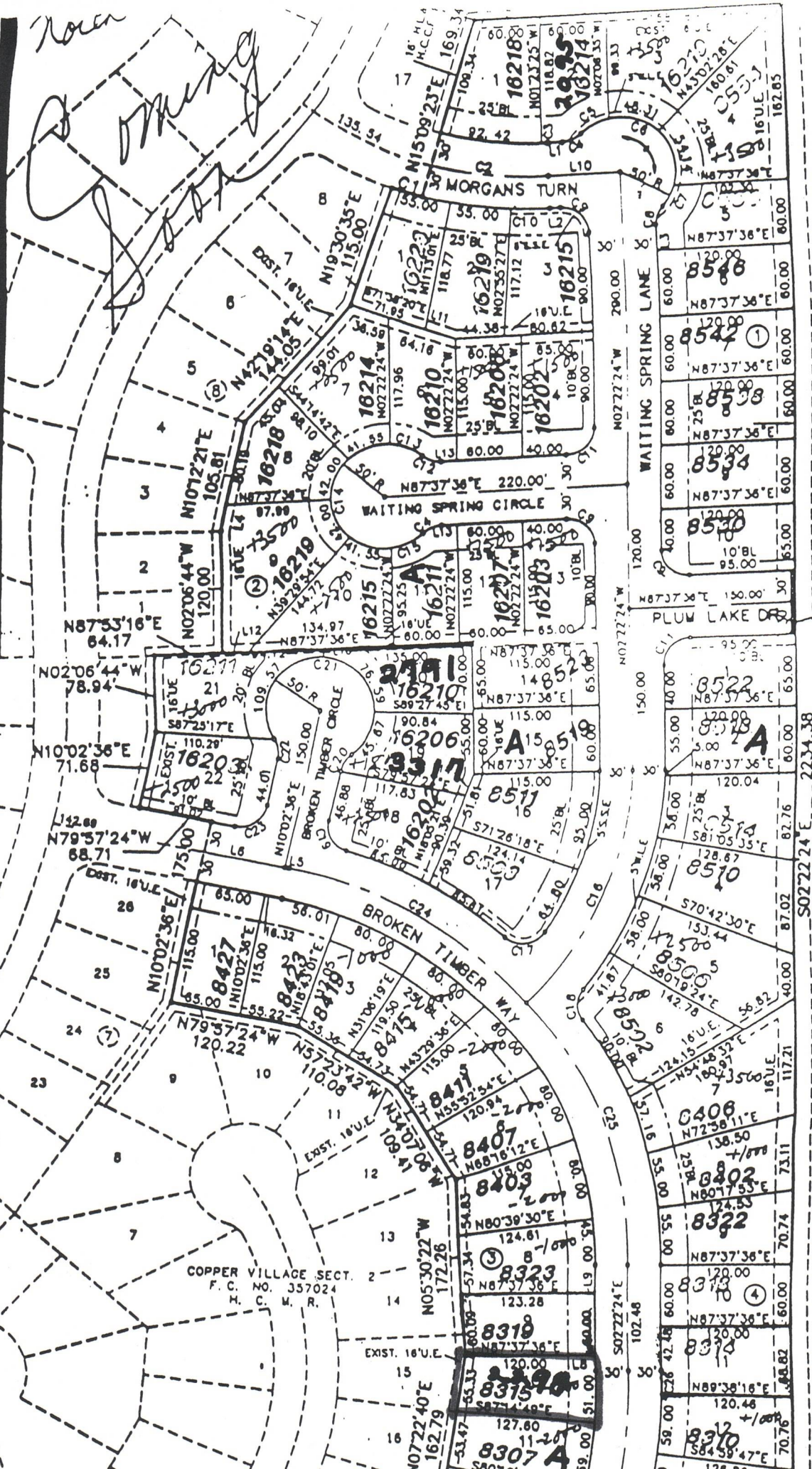
COPPER VILLAGE

Sections One, Two and Three



Notes

Handwritten signature/initials



HIGH BANK
150' FEE STRIP

S02722'24\"/>

Section 3

COPPER VILLAGE SECT. 2
F. C. NO. 357024
H. C. F. R.

Handwritten mark

N87°53'16\"/>

N79°57'24\"/>

N10°02'36\"/>

N79°57'24\"/>

N57°22'42\"/>

N05°30'22\"/>

N07°22'40\"/>

N19°30'35\"/>

N42°19'14\"/>

N107°22'16\"/>

N02°06'44\"/>

N107°02'36\"/>

N107°02'36\"/>

N107°02'36\"/>

N79°57'24\"/>

N57°22'42\"/>

N05°30'22\"/>

N07°22'40\"/>

N15°09'23\"/>

N19°30'35\"/>

N07°22'24\"/>

N07°22'24\"/>

N07°22'24\"/>

N07°22'24\"/>

N07°22'24\"/>

N07°22'24\"/>

N07°22'24\"/>

N07°22'24\"/>

N07°22'24\"/>

N07°22'24\"/>

N07°22'24\"/>

N07°22'24\"/>

N07°22'24\"/>

N07°22'24\"/>

N07°22'24\"/>

N07°22'24\"/>

N07°22'24\"/>

N07°22'24\"/>

N07°22'24\"/>

N07°22'24\"/>

N87°37'36\"/>

N87°37'36\"/>

N87°37'36\"/>

N87°37'36\"/>

N87°37'36\"/>

N87°37'36\"/>

N87°37'36\"/>

N87°37'36\"/>

N87°37'36\"/>

N87°37'36\"/>

N87°37'36\"/>