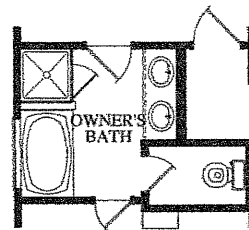
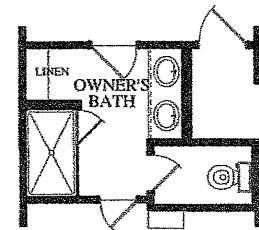


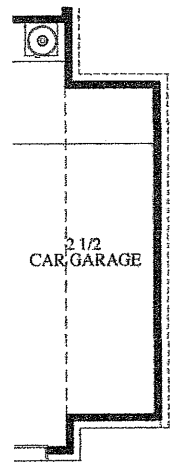
SECOND FLOOR PLAN



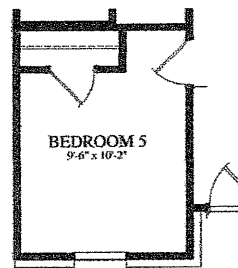
OWNER'S BATH  
LUXURY OPTION



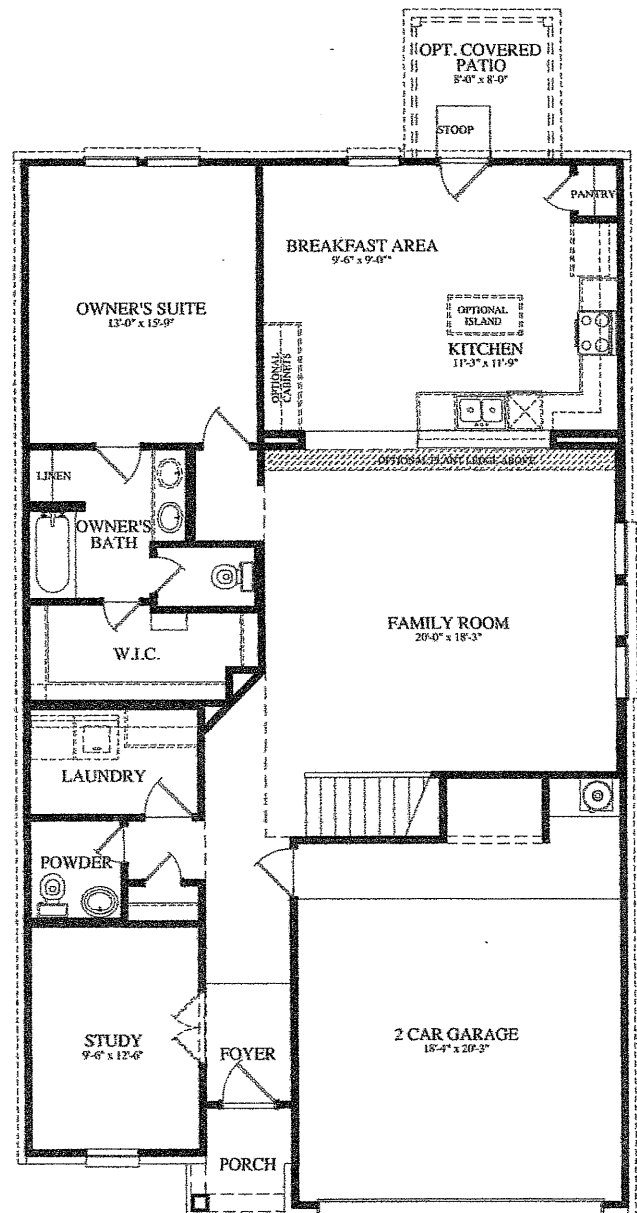
OWNER'S BATH  
SHOWER OPTION



2 1/2 CAR OPTION



BEDROOM 5 OPT.



FIRST FLOOR PLAN

# TRINITY - 2513

Prices, features, dimensions and availability are subject to change without notice. Square footages and images are approximations.



# CASTLEROCK COMMUNITIES



## INCLUDED FEATURES

### Cobalt Series Homes

#### EXTERIOR FEATURES

- Beautifully designed elevations with 6:12 roof pitches
- Brick on front elevation per plan
- Upgrade elevations available
- 25-year weather wood shingles
- Energy Efficient 9800 Series Vinyl Windows with LoE366 Cardinal glass
- Cementitious fiber cement siding, fascia, soffit & trim
- Insulated raised-panel fiberglass entry door
- Steel garage door with pre-wire for automatic opener
- 3X3 broom finished concrete rear patio
- 16 foot driveway with 3 foot privacy walk to entry
- Decorative black address numbers

#### INTERIOR FEATURES

- 9 foot ceiling heights in primary living areas and master per plan
- Rounded sheetrock corners throughout
- Raised panel interior doors with decorative casing
- Nickel finish door hardware
- Stomped ceiling texture; spray wall texture
- Choice of one color interior with Kwal paint
- Decorative wood base throughout home
- Nickel finish ceiling fan with light kit and oak-colored blades in family room

#### KITCHEN FEATURES

- Flat panel birch cabinets with 30 inch uppers
- GE slide in gas range, dishwasher and space saving external venting microwave
- Fluorescent lighting
- Wilsonart laminate kitchen countertops with ceramic tile backsplash
- Stainless steel dual bowl sink
- Chrome double lever Delta faucet
- Garbage disposal at kitchen sink

#### LUXURIOUS BATHS

- Round water saver commodes
- Bath cabinetry will match kitchen selection
- Wilsonart white laminate bath countertops
- White drop-in vanity sinks at bath per plan
- Shower/tub enclosure in owners bath
- Shower/tub enclosure in secondary bath
- Chrome bath faucets and tissue holders
- White pedestal sink and decorative mirror at powder per plan

\*\*Super shower option or luxury bath option available

#### FLOORING FEATURES

- Choice of ceramic tile at entry, kitchen/breakfast, baths and utility
- Carpet over 3/8 inch pad
- Professionally designed color palates in several combinations with additional options and upgrades for your customization

#### ENERGY EFFICIENCY FEATURES

- National energy code- third party verified
- 15 SEER Rheem HVAC system with environmentally friendly 410A refrigerant
- Gas-fired water heater
- Ridge vent, soffit vent and air hawk attic ventilation per plan
- Poly seal on all base plate and wood penetrations to exterior
- Dual-pane LowE366 windows with double locks
- Radiant barrier roof decking
- Electric washer/dryer connections

#### ENGINEERING AND SAFETY FEATURES

- Guardian certified ([www.guardiancertifiedhome.com](http://www.guardiancertifiedhome.com))
- Professionally engineered and designed post-tension foundations
- Engineered framing designs
- Smoke detectors in bedrooms and halls with battery back-up
- CPVC water distribution system with main water shut-off access
- Copper wiring with protective housing on exterior GFCI outlets
- Phone jack in kitchen
- Cable TV pre-wired in family, master and gameroom per plan
- Lighted front entry doorbell
- Fluorescent lighting at utility room per plan

#### LANDSCAPING PACKAGE

- Eight 5-gallon shrubs in front yard
- One 3 inch caliper pine tree
- 6 foot privacy fence at rear yard with one gate
- Fully sodded front and side yards to fence
- Rain diverters at exterior doors per plan
- Two exterior hose bibs with anti-siphoning device

#### CUSTOMER SERVICE FEATURES

- Two-year warranty for materials and workmanship (see warranty)
- Ten-year structural component warranty (see warranty)
- Pre-start meeting with our team
- Pre-sheetrock meeting with our team
- Pre-move in orientation meeting with construction manager

\*\*Indicates Optional Feature

3.13.14

Homebuyer initials.....