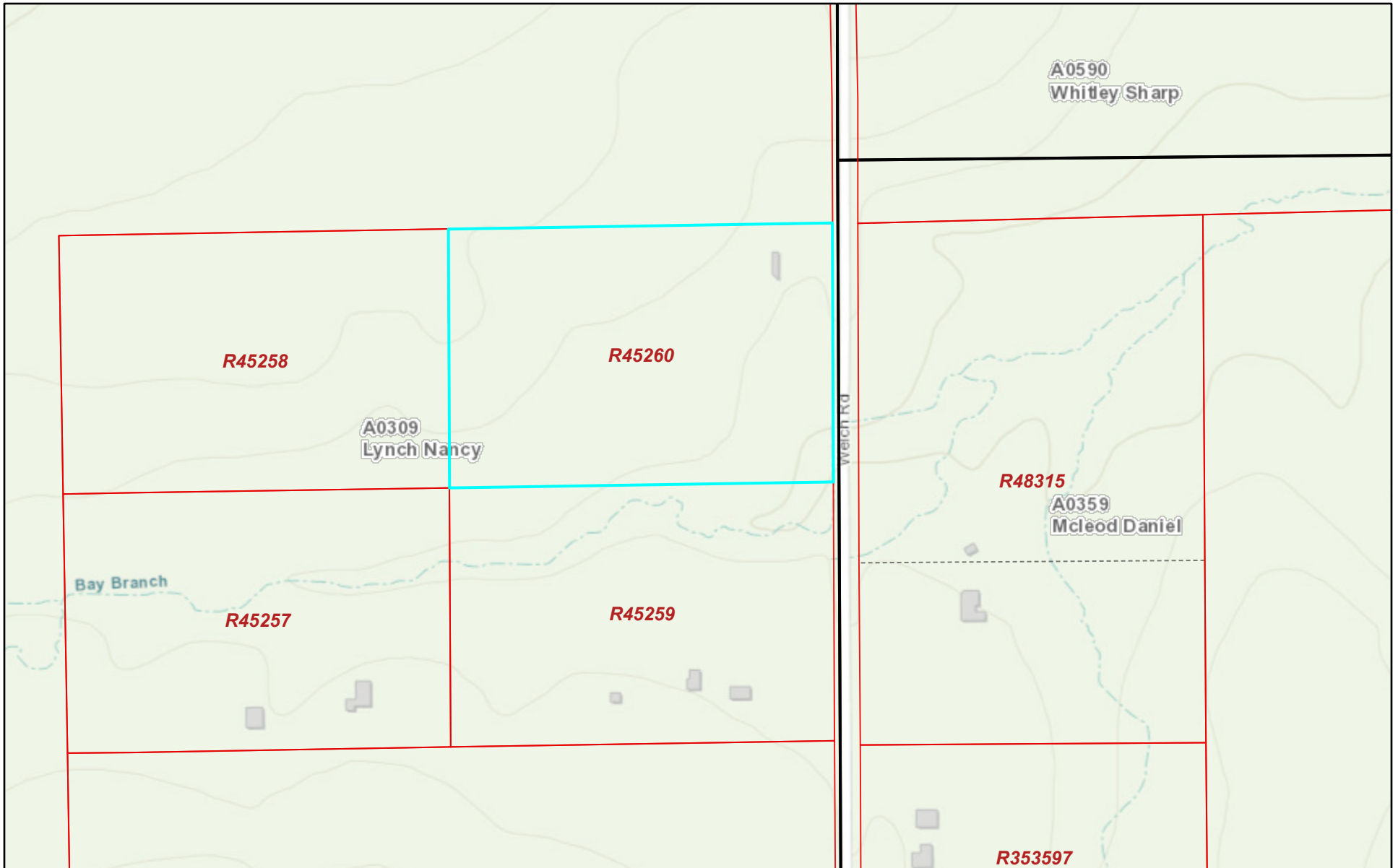


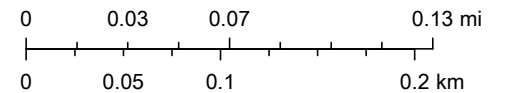
20793 Welch Rd Topo



8/5/2020, 11:17:21 AM

Abstracts Parcels Lot Lines

1:4,514



Sources: Esri, HERE, Garmin, Intermap, increment P Corp., GEBCO, USGS,

Montgomery County Appraisal District, BIS Consulting -

Disclaimer: This product is for informational purposes only and has not been prepared for or be suitable for legal, engineering, or surveying purposes. It does not represent an on-the-ground survey and represents only the approximate relative location of boundaries.