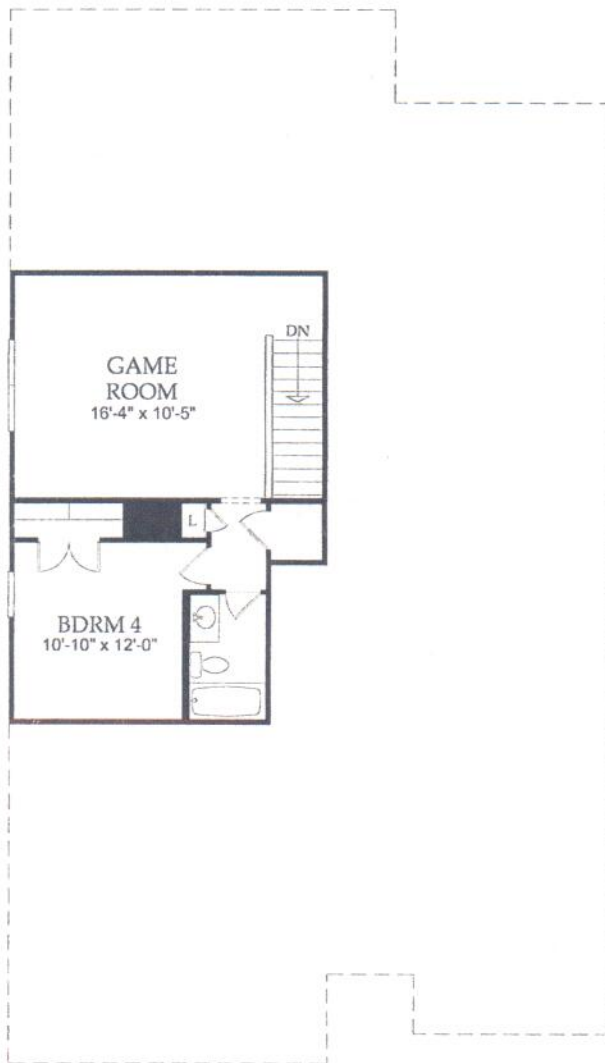
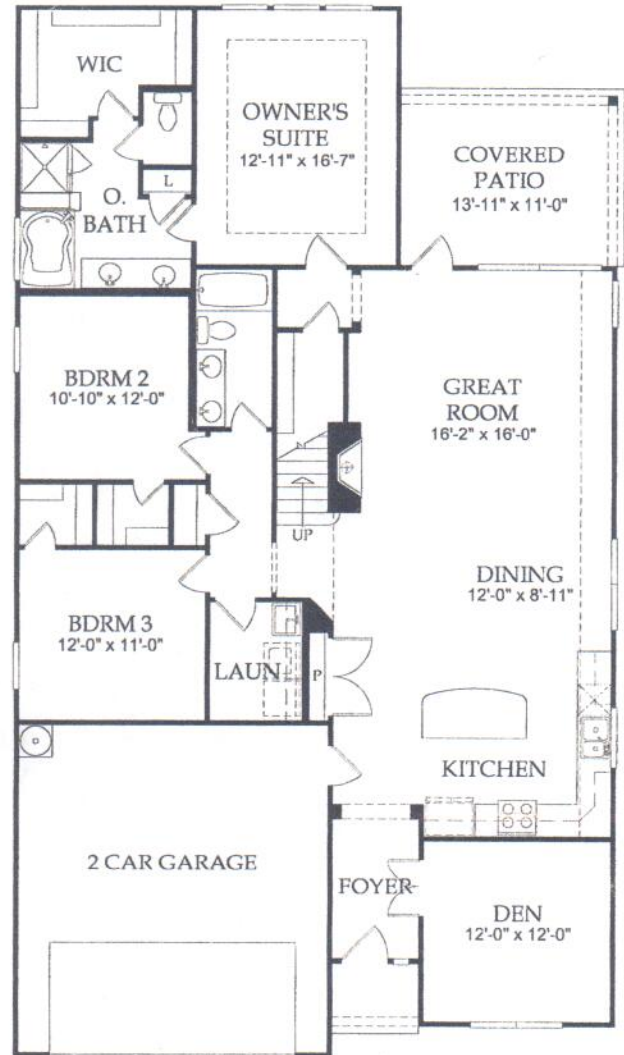




## Braxton



### Second Floor



### First Floor



## Cinco Ranch 50'

### Energy Star

- Lennox 14 Seer Condenser
- R 13 Friction Batt Insulation Installed in wall with Zero
- R22 Fiberglass Insulation in Sloped Ceilings
- R30 Fiberglass Insulation in Attic
- DOW Poly-Foam Sealant Around Doors, Windows, Exterior Penetrations, and Foundation to Reduce Air Infiltration
- 50 Gallon Energy Efficient Gas Water Heater
- Gas and Electric Dryer Hook Ups with Outside Vent
- DOW Weathermate™ Total Housewrap Package
- LoE2 Dual Pane Windows with Screens
- HONEYWELL Programmable Thermostat
- LP TechShield® Radiant Barrier

### Exterior Features

- Covered Back Patios with Block and Prewire for Ceiling Fan
- Full Sod in Front, Back, and Side Yards
- Professional Landscape Package in Front Yard
- Full Guttering and Downspouts Surrounding Entire Home
- Three Sides ACME American Made Clay Brick on First Floor of One-Story Homes (100 Year Guarantee)
- Four Sides ACME American Made Clay Brick on First Floor of Two-Story Homes (100 Year Guarantee)
- SHERWIN WILLIAMS® A-100 Gloss Acrylic Exterior Paint
- CLOPAY® Cottage-Style Garage Door w/Windows
- LIFTMASTER® ½ HP Garage Doors w/Windows
- Full Sheetrock and Paint inside Garage
- Coach Light on Garage
- Convenient Outdoor Faucets and Electrical Outlets
- 6' Cedar Privacy Fence
- Cast Stone Engrave Address Block
- ThermaTru® Insulated Front Door

### Interior Features

- HEATILATOR® Direct-Vent Fireplace with Gas Logs, Glass Enclosure and Remote Control
- MOHAWK®/DAL TILE® Ceramic or Porcelain 12" Tile in Foyer and Laundry Room
- Utility Sink w/Granite Countertop in Laundry Room (per plan)
- Rounded Sheetrock corners
- Crown Molding in Foyer and Formals (Den and Dining Rooms)
- Family Room, Master Bedroom, Game Room, Patio, and Secondary Bedrooms Blocked and Prewired for Ceiling Fans
- Phone (Cat5E) and Cable (RG6) Outlets in Family, Kitchen, Den, Game, and all Bedrooms
- Surround Sound Pre-Wire (4 speakers and 1 subwoofer) in Game Room or in Family Room for Plans without Game Room
- MOHAWK Upgraded Carpet with ½ inch, 8 lb. Carpet Pad
- Sea Gull Lighting® Fixtures
- Recessed Can lighting
- Exclusive SCHLAGE® Chrome Lever Door Hardware
- Bright Chrome Exposed Door Hinges
- Rocker Switches
- SHERWIN WILLIAMS Washable Interior Paint
- Raised Panel Doors
- Spindle Stair Railing (per plan)

### Kitchen Features

- 2 cm. Granite Countertops with Demi Edge
- KOHLER® Overmountmount Stainless Steel Sink
- GENERAL ELECTRIC® Appliance Package – Features GE™ Self Cleaning Gas Over, Vented Microwave, and Dishwasher
- 36" Birch Cabinetry with Crown Moulding
- 4" Granite Backsplash
- MOHAWK/DAL TILE Ceramic or Porcelain 12" Tile in Kitchen and Breakfast Nook
- MOEN® INTEGRA Single Handle Faucet with Hand Spray
- Recessed Can Lights
- INSINKERATOR Garbage Disposal

### Bath Features

- Deluxe Master Bath with Separate Glass Enclosed Shower and KOHLER Garden Tub
- MOHAWK/DAL TILE 12" Tile Shower Surround in Master Bath
- Cultured Marble Vanities w/Integrated Sinks in all Baths
- 36" Elevated Dual Master Bath vanities
- Birch Cabinetry (Matching Kitchen)
- Pedestal Sink in Power Room
- MOHAWK/DAL TILE Ceramic or Porcelain 12" Tile Flooring
- KOHLER/STERLING Elongated Toilets, including Comfort Height Feature in Master and Powder Bath
- Polished Chrome MOEN Fixtures

### Security Features

- Double Locks on All Windows
- Front and Rear Door Lighting
- SCHLAGE® Single Cylinder Deadbolt Lock on All Exterior Doors
- Security System Including Alarm Keypad and Motion Detector
- Smoke Detectors with Battery Backup

### Quality Construction Features

- Home Team Pest Defense® "Tubes in the Wall" System
- Home Team Boric Acid Termite Pretreatment
- 125 AMP Service with Interior Copper Wiring
- CertainTeed™ Engineered Dimensional Roof Shingles
- Divided Light Windows on Front of Home (per plan)
- Engineered Framing System
- Engineered Dimensional Roof Shingles
- Engineered Post-Tension Foundations
- Tongue-in-groove Subflooring, screwed and glued
- ZURN PEX® Freeze-Tolerant Plumbing

### Award Winning Customer Service

- Onsite Customer Relations Team Dedicated to Cinco Ranch Homeowners – No Third Party Warranty Coverage
- Scheduled Meetings throughout Critical Stages of Construction plus Post-Closing Visits during First Year of Home Ownership
- 24 Hour Access to Customer Relations Resources

Pulte Homes of Texas, L.P. reserves the right to revise included features, specifications and prices without notice. 4/2/2010



## Energy Efficient Homebuilding: A Smart Choice for Savings and Sustainability

Until recently, the average new home buyer probably thought of "green building" as a noble concept – but one found only in custom homes bought by millionaires. It would be great to embrace a home made from environmentally sensitive materials, with exceptional attention to energy use and the comfort and health of the home's inhabitants, but who could afford this in the "real world?"

Thanks to innovative efforts underway at Pulte Homes, the answer is becoming "everyone!"

Pulte Homes incorporates many energy efficient practices and "green" products in our new home communities across the country. For new home buyers of all types, greater energy efficiency translates into lasting savings, a comfortable home environment, and smart use of natural resources.

Here's a sampling of what Pulte Homes is doing in various markets across the U.S. to create a better-performing home that embraces both sustainability and cost-savings:



**Right-sized HVAC** (Heating, Ventilation and Air Conditioning) systems are designed specifically for the size and layout of your home. Properly sized HVAC equipment will run for longer periods of time at a lower rate of energy consumption, keeping your home at a more consistent, comfortable temperature and extending the life of your HVAC equipment. The HVAC system's return air grilles and multiple air ducts help to lower humidity, stimulate fresh air ventilation and reduce energy usage.



An **overall tight building envelope** could be considered the "skin" of your home. Air sealing helps reduce energy loss, which in turn lowers your energy use. Pulte uses Dow's WEATHERMATE Plus housewrap on many homes, which acts as a kind of protective "jacket" to defend the home against moisture intrusion and air infiltration.



**Low-E (low emissivity) windows** feature a metallic coating between two panels of glass that helps to block out unwanted ultraviolet (UV) light and the sun's heat – reducing energy use, condensation and minimizing the sun's damage to the upholstery and carpet fabrics in your home.

Homes that earn the government's **ENERGY STAR**<sup>®</sup> label meet strict guidelines for energy efficiency set by the U.S. Environmental Protection Agency (EPA). Pulte Homes' ENERGY STAR qualified homes are at least 15% more energy efficient than standard homes.



Many Pulte Homes communities now feature **ENERGY STAR appliances** as a standard in every home. As certified by the U.S. Environmental Protection Agency and the Department of Energy, all ENERGY STAR appliances use 10-50% less energy and water than standard models.<sup>1</sup> According to the DOE, appliances and lighting account for more than one-third of the average homeowner's utility bill,<sup>2</sup> so incorporating energy-efficient appliances can translate into significant savings.

While many Pulte Homes markets around the country are bringing savings and sustainability to new homebuyers with these and other "high performance" building initiatives, Pulte Homes' communities in Texas are finding that new home buyers are looking for even more "green" practices and energy efficient products. In addition to the examples above, select Pulte Homes communities in Texas include programmable thermostats as well as the Hunter ET System for irrigation which can provide dramatic savings in water use and on water bills.

As Pulte Homes is proving, "green building" is no longer a concept of the future or a practice reserved for custom homebuyers. Pulte homebuyers across the country are realizing significant energy savings and enjoying more comfortable homes with their families as we continue to research and implement innovative products and practices for smart, sustainable communities.

1 - [www.energystar.gov](http://www.energystar.gov)

2 - U.S. Department of Energy 2005 Buildings Energy Data Book

