

# M MODERN

RICE MILITARY



713-868-7226

5023 Washington Avenue  
Houston, Texas 77007



ModernRiceMilitary.com

## Features



- Roof terrace with views
- Energy Star and Green Built Gulf Coast Bronze homes
- Sleek contemporary finishes
- Close proximity to Memorial Park & the Washington Corridor



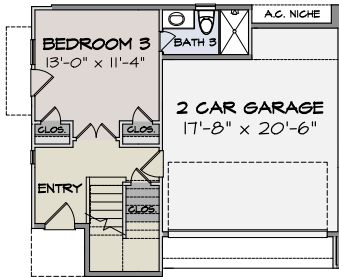
  
**ENTERRA**  
HOMES



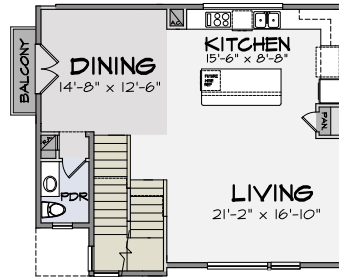
# Floorplan



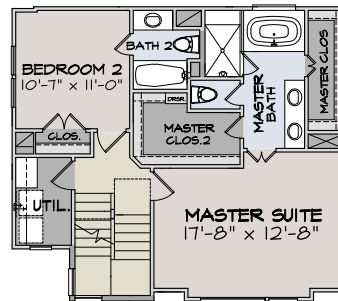
A, B, & D



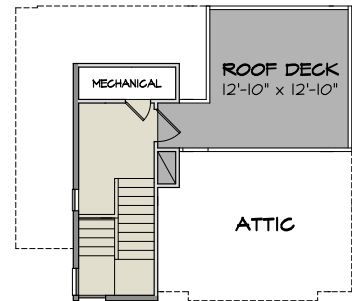
first floor



second floor

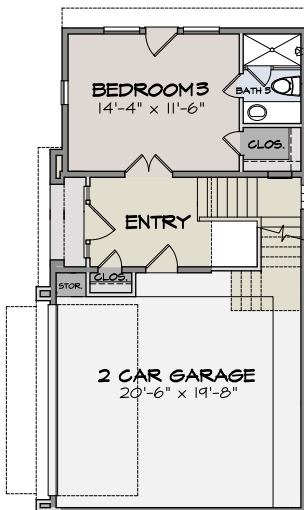


third floor

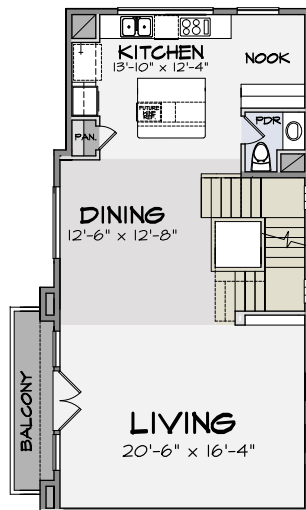


roof terrace

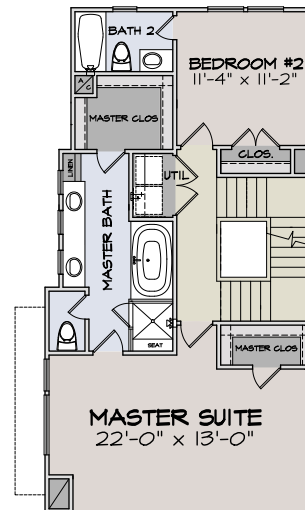
C



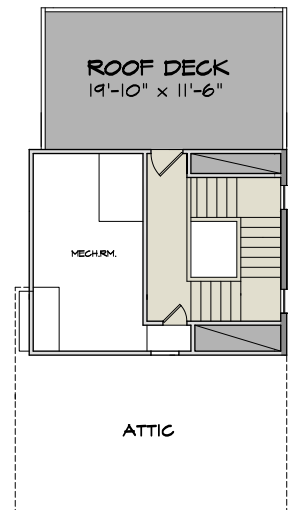
first floor



second floor



third floor



roof terrace



## Available Homes



## Neighborhood



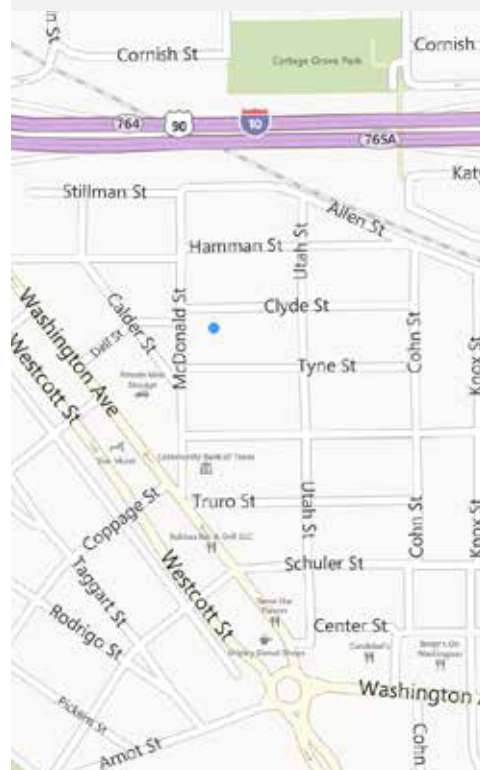
### RICE MILITARY

Rice Military is less than 8 minutes from Downtown and 8 minutes from the Galleria. Rice Military is Houston's hot spot for places to live, located perfectly between River Oaks and I-10. Washington avenue, or "Restaurant Row" is home to some of Houston's latest and greatest restaurants. Rice Military is only minutes away from Memorial Park and is a great place to call home.

## Developer



Enterra Homes is one of Houston's leading builders of urban townhomes and condominiums. Each of the company's projects are thoughtfully designed to maximize style and value. Enterra Homes offers a variety of styles, locations, and price levels of homes throughout Houston's fastest growing urban areas surrounding Downtown.



713-868-7226

5023 Washington Avenue  
Houston, Texas 77007



ModernRiceMilitary.com