

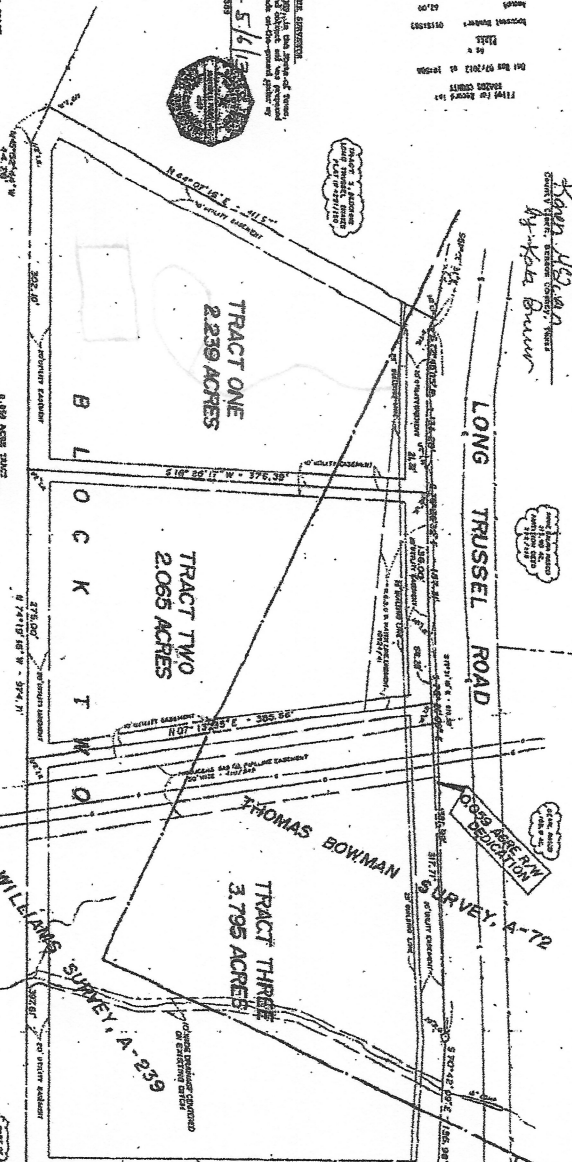
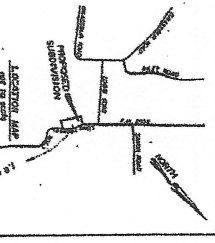
STATE OF TEXAS
 COUNTY OF BRAZOS
 CLERK OF COURTS
 My Comm. Expires 07/2013
 My No. 072013
 I have verified this plat and find it correct in accordance with the laws of this State and the Official Public Records Act.

1. JOHN WILLIAMS, Creator of John Williams Survey, A-239, as his heirs and assigns, do hereby certify that the plat hereon is a true and correct copy of the original plat on file in the Office of the Clerk of Courts, Brazos County, Texas.

REGISTERED BY THE COUNTY CLERK

THIS APPLICATION WAS FILED IN THE OFFICE OF THE COUNTY CLERK OF BRAZOS COUNTY, TEXAS, ON THE 21ST DAY OF MAY, 2013, AT 10:00 AM. THE DAY OF FILING WAS THE 21ST DAY OF MAY, 2013.

- THESE NOTES:
- (1) The plat hereon was prepared by the Applicant, and the Applicant warrants that the same is a true and correct copy of the original plat on file in the Office of the Clerk of Courts, Brazos County, Texas.
 - (2) The Applicant warrants that the same is a true and correct copy of the original plat on file in the Office of the Clerk of Courts, Brazos County, Texas.
 - (3) The Applicant warrants that the same is a true and correct copy of the original plat on file in the Office of the Clerk of Courts, Brazos County, Texas.
 - (4) The Applicant warrants that the same is a true and correct copy of the original plat on file in the Office of the Clerk of Courts, Brazos County, Texas.
 - (5) The Applicant warrants that the same is a true and correct copy of the original plat on file in the Office of the Clerk of Courts, Brazos County, Texas.
 - (6) The Applicant warrants that the same is a true and correct copy of the original plat on file in the Office of the Clerk of Courts, Brazos County, Texas.
 - (7) The Applicant warrants that the same is a true and correct copy of the original plat on file in the Office of the Clerk of Courts, Brazos County, Texas.
 - (8) The Applicant warrants that the same is a true and correct copy of the original plat on file in the Office of the Clerk of Courts, Brazos County, Texas.
 - (9) The Applicant warrants that the same is a true and correct copy of the original plat on file in the Office of the Clerk of Courts, Brazos County, Texas.
 - (10) The Applicant warrants that the same is a true and correct copy of the original plat on file in the Office of the Clerk of Courts, Brazos County, Texas.



TRACT ONE
 2,239 ACRES
 B L O C K T W O

TRACT TWO
 2,065 ACRES

TRACT THREE
 3,795 ACRES

JOHN WILLIAMS SURVEY, A-239

W.M. VESS SURVEY, A-233

FINAL PLAT
 LONG TRUSSEL ESTATES
 PHASE TWO
 8,158 ACRES
 ONE BLOCK
 JOHN WILLIAMS SURVEY, A-239
 THOMAS BOWMAN SURVEY, A-72
 BRAZOS COUNTY, TEXAS

Prepared by: *William Gilman*
 Surveyor
 My Comm. Expires 07/2013
 My No. 072013

Vol. 11320 Pg. 70

1154580