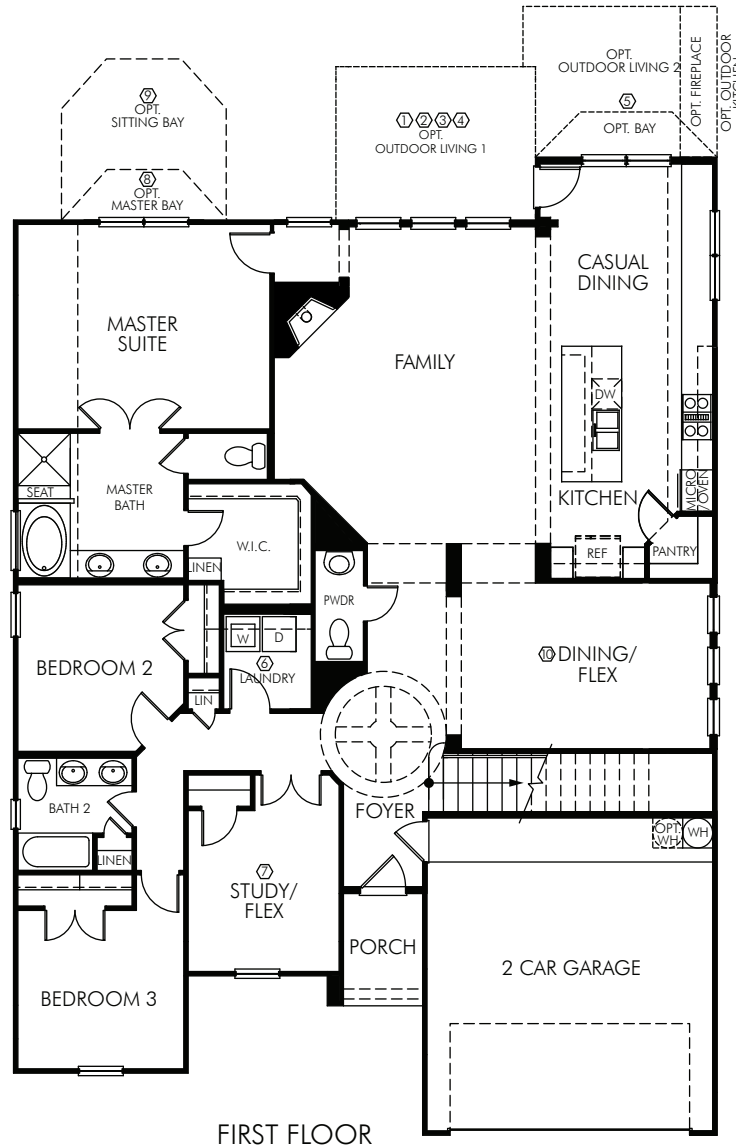


# Hyacinth II



## THE HYACINTH II • PLAN 5300

3,055 sq ft. • 1.5 Story • 3 Bedroom • 2.5 Bath • Dining • Study • Flex Living • Bonus Room • Family Room • 2 Car Garage

**FLEX LIVING OPTIONS:** Up to 3,203 sq ft. • Sitting Bay at Master • Bay at Master • Bay at Casual Dining • Study • Bedroom 4 • Game Room with Flex and Powder • Game Room with Bedroom 5 & Bath 3 • Outdoor Living • Outdoor Kitchen

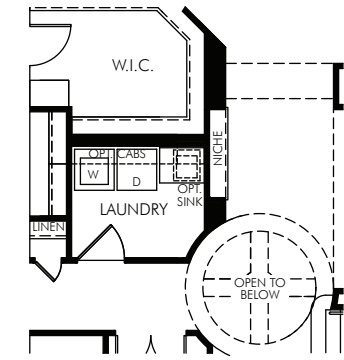
**MeritageHomes**® 877-Ask-Meritage (275.6374) | [meritagehomes.com](http://meritagehomes.com)

Floorplan rendering is an artist's conceptual rendering intended to provide a general overview. It does not constitute actual plans and specifications for any home and may depict elevations, options, upgrades, features, and amenities that are not included as part of the home and/or may not be available for all lots and/or in all communities. The floorplan rendering may not be drawn to scale. Any dimensions on the floorplan rendering are approximate and actual dimensions may vary. Plans and specifications are subject to change without notice. Homes may be constructed with a floorplan that is the reverse of the floorplan rendering. Plans are copyrighted and/or otherwise subject to intellectual property rights of Meritage and/or others and cannot be reproduced or copied without Meritage's prior written consent.

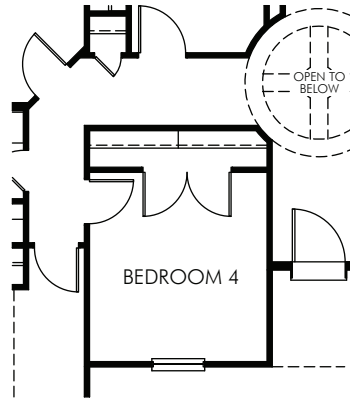
REV. 12/13  
5300/OTR VE



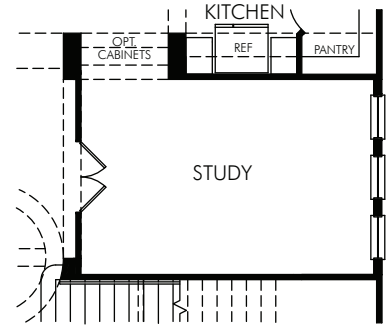
# Hyacinth II



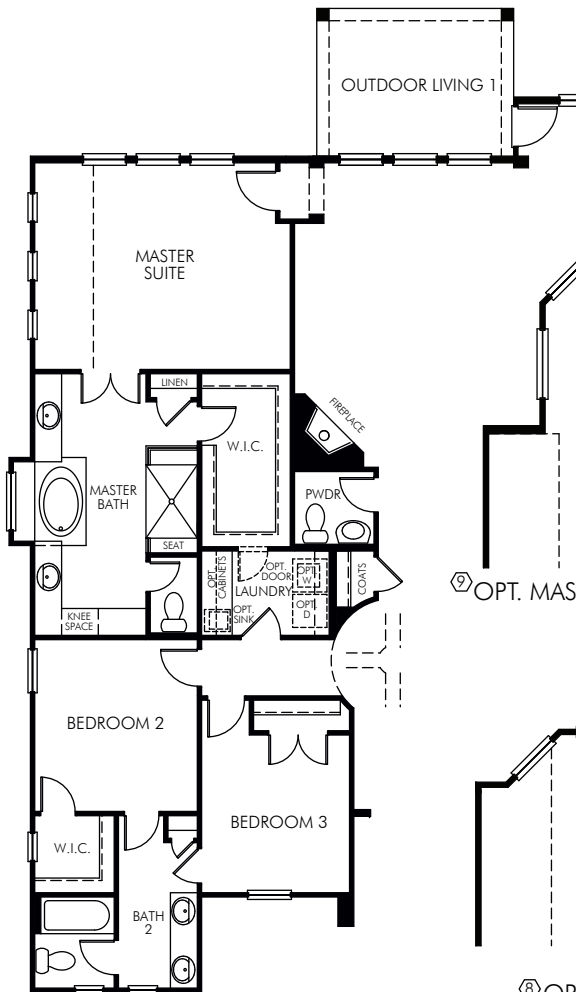
⑥ OPT. EXPANDED LAUNDRY  
LAU1050



⑦ OPT. BEDROOM 4  
BED0400

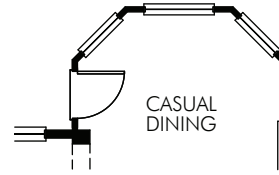


⑩ OPT. STUDY  
RMO0015

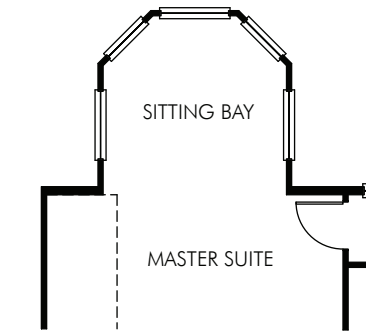


⑫ OPT. SUPER MASTER SUITE RMO0029

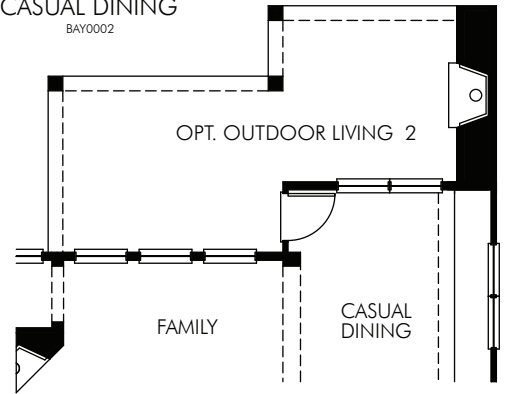
⑪ OPT. OUTDOOR LIVING



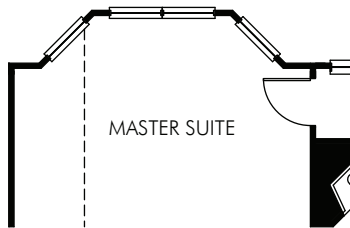
⑤ OPT. BAY AT CASUAL DINING  
BAY0002



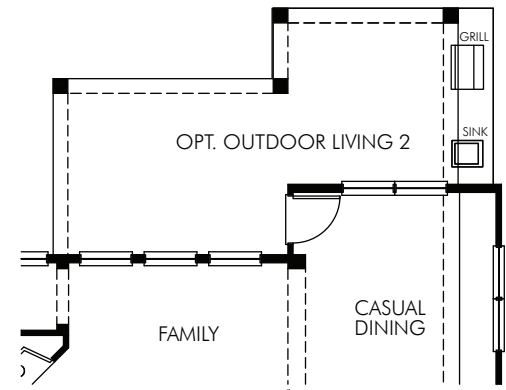
② OPT. MASTER SUITE SITTING BAY  
RMO0023



④ OPT. OUTDOOR LIVING 2 W/FIREPLACE  
FPO0130



⑧ OPT. MASTER BAY  
BAY0005

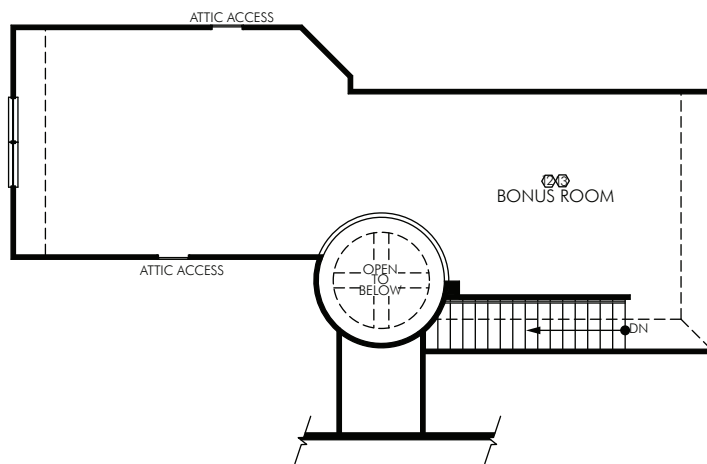


③ OPT. OUTDOOR LIVING 2  
OUT2810

② OPT. OUTDOOR KITCHEN  
KIT0001

## OPTIONS FOR THE HYACINTH II • FIRST FLOOR

# Hyacinth II



SECOND FLOOR

## THE HYACINTH II • SECOND FLOOR

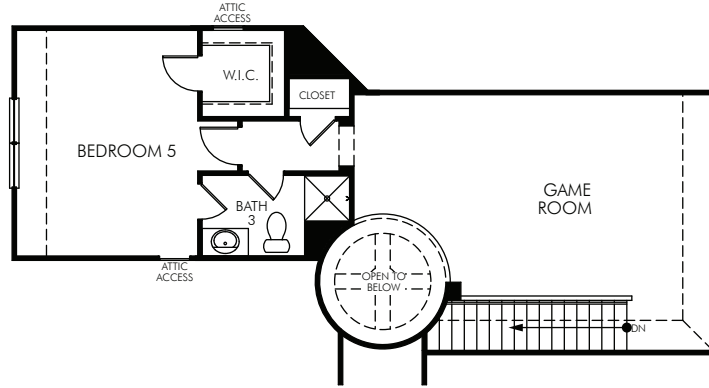
**MeritageHomes**® 877-Ask-Meritage (275.6374) | [meritagehomes.com](http://meritagehomes.com)

Floorplan rendering is an artist's conceptual rendering intended to provide a general overview. It does not constitute actual plans and specifications for any home and may depict elevations, options, upgrades, features, and amenities that are not included as part of the home and/or may not be available for all lots and/or in all communities. The floorplan rendering may not be drawn to scale. Any dimensions on the floorplan rendering are approximate and actual dimensions may vary. Plans and specifications are subject to change without notice. Homes may be constructed with a floorplan that is the reverse of the floorplan rendering. Plans are copyrighted and/or otherwise subject to intellectual property rights of Meritage and/or others and cannot be reproduced or copied without Meritage's prior written consent.

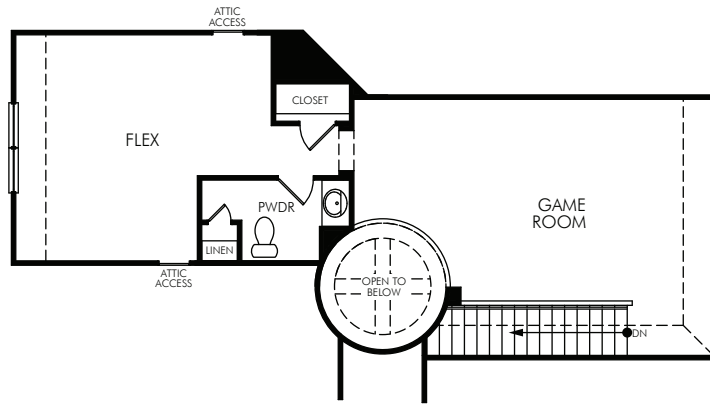
REV. 12/13  
5300/ OTR VE



# Hyacinth II



Ⓞ OPT. BEDROOM 5 WITH BATH 3  
RMO0052



Ⓞ OPT. GAME ROOM WITH FLEX/POWDER  
RMO0053

## OPTIONS FOR THE HYACINTH II • SECOND FLOOR

**MeritageHomes**® 877-Ask-Meritage (275.6374) | [meritagehomes.com](http://meritagehomes.com)

Floorplan rendering is an artist's conceptual rendering intended to provide a general overview. It does not constitute actual plans and specifications for any home and may depict elevations, options, upgrades, features, and amenities that are not included as part of the home and/or may not be available for all lots and/or in all communities. The floorplan rendering may not be drawn to scale. Any dimensions on the floorplan rendering are approximate and actual dimensions may vary. Plans and specifications are subject to change without notice. Homes may be constructed with a floorplan that is the reverse of the floorplan rendering. Plans are copyrighted and/or otherwise subject to intellectual property rights of Meritage and/or others and cannot be reproduced or copied without Meritage's prior written consent.

REV. 12/13  
5300/ OTR VE

