

PLAS
S
668
D RECORDS

T 3
1 Ac.

12'00" E
18.48

TRACT 4
6.820 Ac.

TRACT 6
4.000 Ac.

TRACT 5
4.968 Ac.

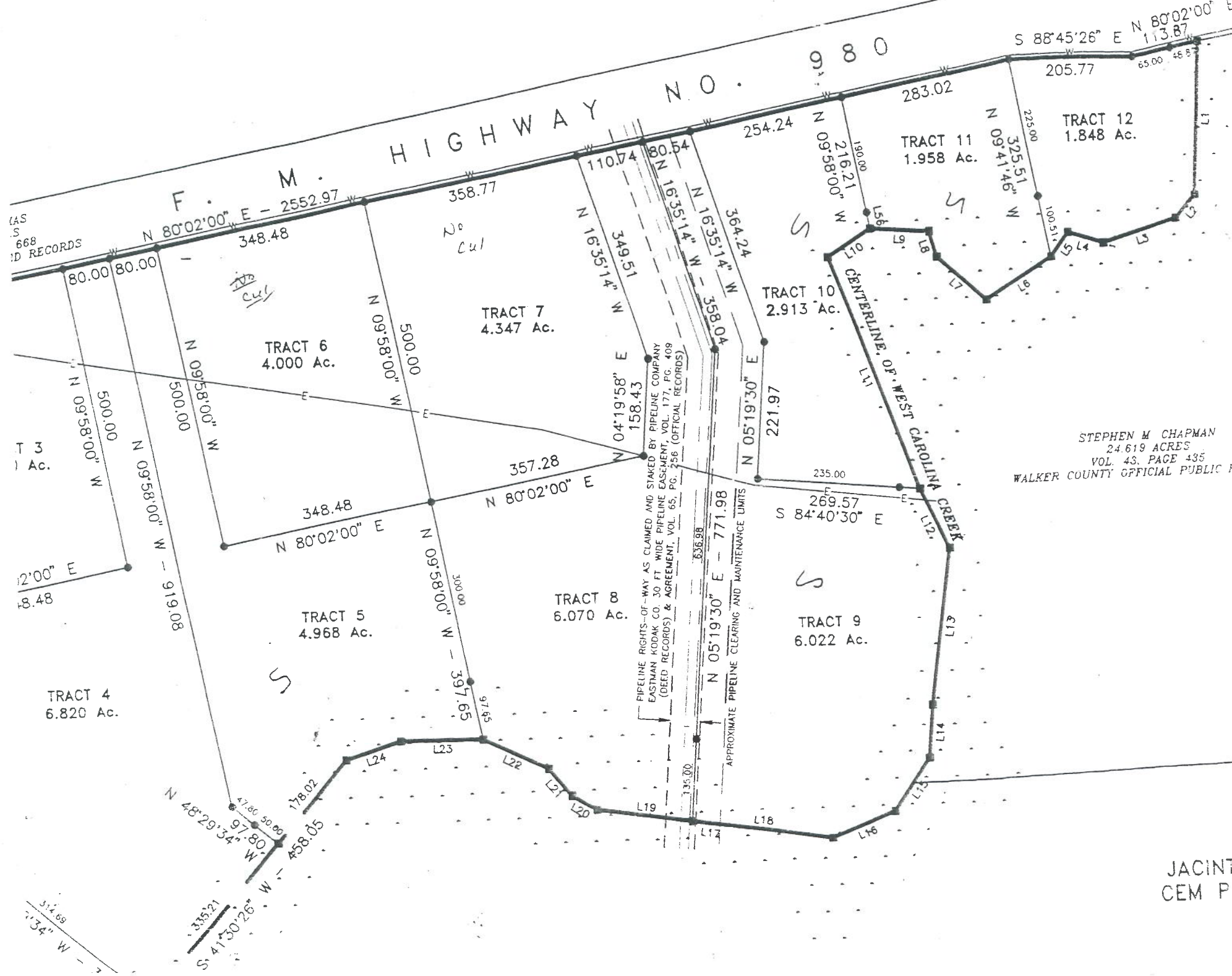
TRACT 7
4.347 Ac.

TRACT 8
6.070 Ac.

TRACT 10
2.913 Ac.

TRACT 11
1.958 Ac.

TRACT 12
1.848 Ac.



STEPHEN W CHAPMAN
24.619 ACRES
VOL. 43, PAGE 435
WALKER COUNTY OFFICIAL PUBLIC REC

JACINTO
CEM PRO