

# COTTONWOOD



## AMENITIES

### Exterior Detailing

- HardiTrim® and Cemplank® Fiber Cement Trim and Siding with 25-Year Manufacturer Warranty
- Sherwin-Williams® Dura-Craft Acrylic Exterior Paint
- Aluminum Divided Light Windows on Front of Home with Half-Screens on all Operable Windows
- 6'8" Therma-Tru® Insulated Textured 6-Panel Front Door
- Schlage® Stainless Steel Single Cylinder Deadbolt Lock
- Full Sod in Front and Side Yards
- Windsor® Durable Embossed Metal Garage Door
- 16-foot Wide 2-Car Driveway with 3-foot Wide Private Walkway from Porch to Driveway
- 2-Hose Bibs on Exterior of Home
- 3X3-inch Broom Finish Rear Step Out
- Broom Finish Front Porches
- 25-yr Asphalt Architectural Shingles
- 6-foot Wood Privacy Fence with Gate

### Energy Efficiency

- Lennox® 14 SEER High Efficiency HVAC with Environmentally Friendly 410A Refrigerant and R6 Rated Duct System
- Insulation Package Includes:
  - R-13 Batt Insulation Installed in wall with Zero Tolerance Application
  - R-22 Fiberglass Insulation in Sloped Ceilings
  - R-30 Fiberglass Insulation in Attic
- HardiTrim® Board Exterior Window Trim Product
- Aluminum LowE3 Glass Windows
- Energy Efficient Electric Water Heater
- Radiant Barrier Roof Decking
- Programmable Honeywell™ Thermostat
- Electric Dryer Hookups with Outside Vent
- Roof Vents for Added Ventilation

### Designer Kitchens

- Quality Cabinets® Oak 30" Flat Panel
- Whirlpool® Appliance Package – Features Free Standing Gas Range, Range Hood, and Energy Efficient Dishwasher
- Icemaker Connection for Refrigerator
- Formica® Laminate Countertops with 4" Laminate Backsplash
- InSinkErator® Garbage Disposal
- Sterling® Stainless Steel Sink with 6" Depth
- Moen® Chrome Single Handle Faucet

### Inside Your Home

- Armstrong® Vinyl Flooring in Entry, Bathrooms, Kitchen, Nook and Utility Room
- Mohawk® Carpet with 5 pound Carpet Pad
- Rounded Drywall Corners with Textured Walls and Ceilings
- Sherwin-Williams® Interior Paint
- All Bedrooms Braced for Ceiling Fans
- Decorative Light Fixture Package
- Decorative Chrome Bathroom Vanity Light Fixtures
- White Ceiling Mount Light Fixtures at Laundry Room & Walk in Closets
- Raised 3- Panel Textured Interior Doors
- Privacy Locks on Owner's Suite and all Bathroom Doors
- Schlage® Chrome Interior Knob Door Hardware
- Dual Phone (Cat-5e) and Cable (RG6) Outlets (locations per plan)
- 8 foot Ceiling Heights
- 3" Colonial Baseboards with 2" Door Casing
- Wood Closet Rods and Shelving

### Luxurious Baths

- Quality Cabinets® Oak Cabinetry
- Standard Height Vanity at Owner's and Secondary Baths
- Formica® Laminate countertop vanities in Owner's and Secondary Baths
- Moen® Chrome Lavatory Faucets and Bath Accessories
- Gerber® Round Standard Height Toilets
- Sterling® Tub/Shower Combo with Fiberglass Wall Surround and Moen® Chrome Faucets in all Baths
- Amerisink® White Pedestal Sink in Powder Room (per plan)

### Protection Plan

- Cable and Rebar Slab per Engineered Drawing with 2500 PSI Concrete
- Borate Treatment on Frame Exterior Walls and Slab Penetrations with TAEXX® "Tubes in Wall" Pest Defense System
- Professionally Engineered frame designs
- Post Close ADT Wireless Security Package
- GFCI Receptacles Located on Home Exterior and in Garage
- Professionally conducted Third Party Inspections at Foundation, Frame, and Final Stages
- 1-year limited warranty
- 2-year mechanical warranty
- 5-year water intrusion warranty
- 10-year structural warranty
- Builder Serviced Warranty



put yourself in a better place®



# Cottonwood

DR  
RGW

DR  
cfr

## ADAMS

1,207 Square Feet

- 3 Bedrooms
- 2 Baths
- 2-Car Garage

### OPTIONAL:

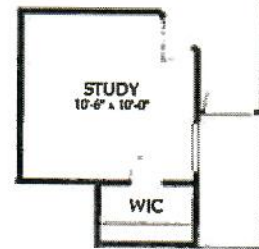
- Study in lieu of Bedroom 3
- Covered Patio
- Kitchen Island
- Owner's Bath:
  - Shower



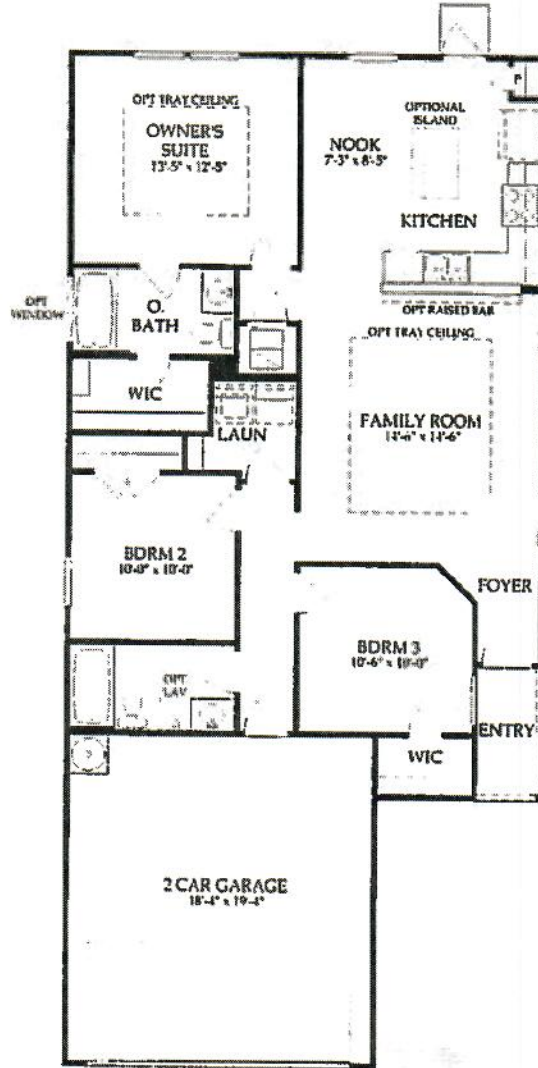
Optional Covered Patio



Optional Owner's Bath Shower



Optional Study in lieu of Bedroom 3



First Floor

5A1023.100 00-ADAMS\_12.12.12

put yourself in  
a better place<sup>SM</sup>



