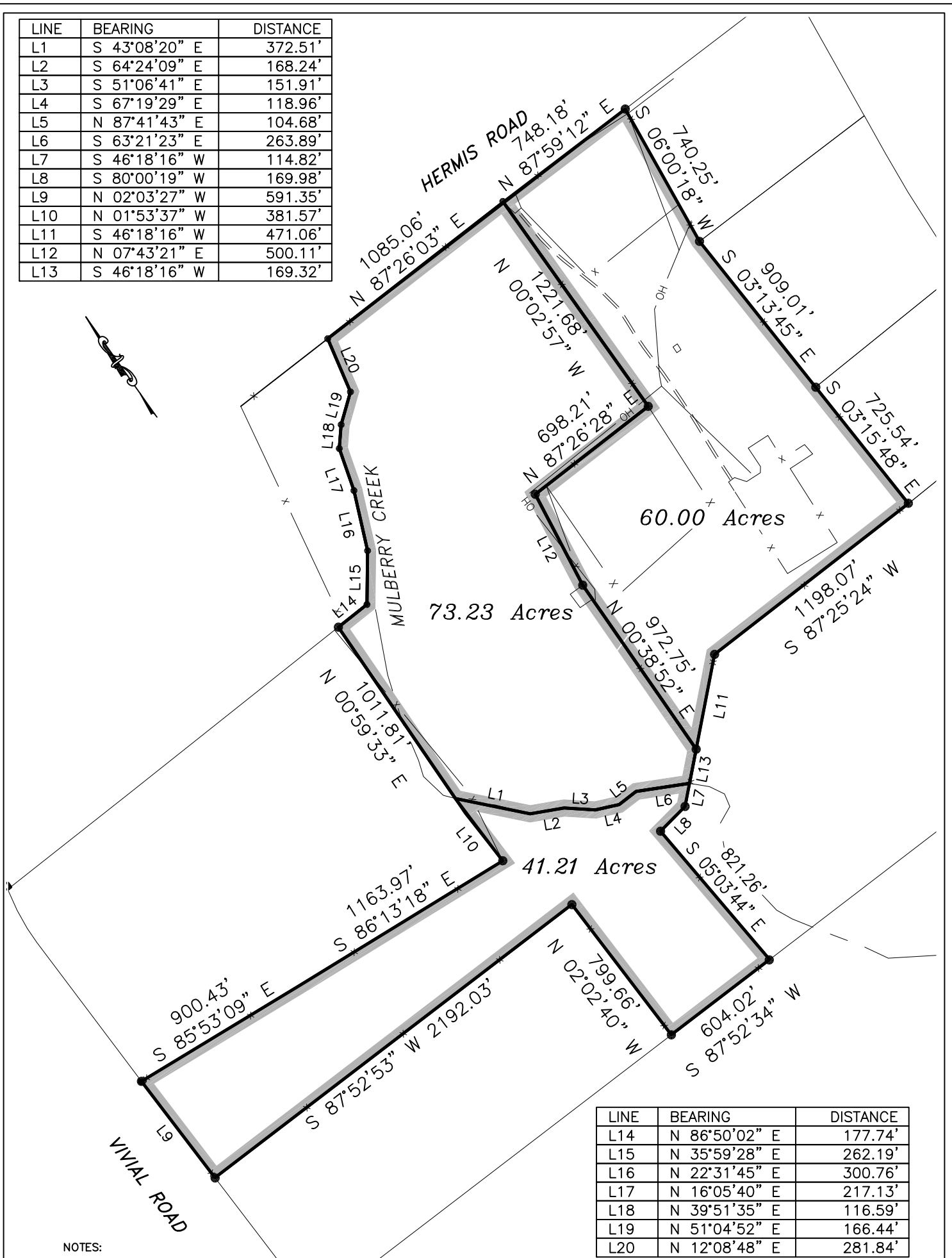


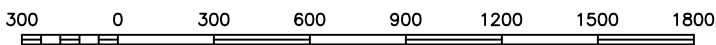
LINE	BEARING	DISTANCE
L1	S 43°08'20" E	372.51'
L2	S 64°24'09" E	168.24'
L3	S 51°06'41" E	151.91'
L4	S 67°19'29" E	118.96'
L5	N 87°41'43" E	104.68'
L6	S 63°21'23" E	263.89'
L7	S 46°18'16" W	114.82'
L8	S 80°00'19" W	169.98'
L9	N 02°03'27" W	591.35'
L10	N 01°53'37" W	381.57'
L11	S 46°18'16" W	471.06'
L12	N 07°43'21" E	500.11'
L13	S 46°18'16" W	169.32'



LINE	BEARING	DISTANCE
L14	N 86°50'02" E	177.74'
L15	N 35°59'28" E	262.19'
L16	N 22°31'45" E	300.76'
L17	N 16°05'40" E	217.13'
L18	N 39°51'35" E	116.59'
L19	N 51°04'52" E	166.44'
L20	N 12°08'48" E	281.84'

NOTES:

1. BEARINGS SHOWN HEREON ARE BASED ON THE TEXAS COORDINATE SYSTEM OF 1983, (NAD83) SOUTH CENTRAL ZONE, PER GPS OBSERVATIONS.
2. (BEARING DISTANCE) INDICATES RECORD BEARING AND DISTANCE.



SCALE: 1" = 600 FEET

I HEREBY STATE THAT THIS PLAT SHOWS THE SUBJECT LOCATION AS SURVEYED ON THE GROUND 06/17/20. THIS PLAT IS TRUE AND CORRECT TO THE BEST OF MY KNOWLEDGE.

PRELIMINARY

COLE E. BARTON
 REGISTERED PROFESSIONAL LAND SURVEYOR
 LICENSE NO. 6368



BARTON & ASSOCIATES
 LAND SURVEYING

2321 TROPICAL WIND DRIVE, CORPUS CHRISTI, TX 78414 | (361) 208-4284
 TEXAS LICENSED SURVEYING FIRM 10194009
 THE INTERSECTION OF QUALITY AND EFFICIENCY

**174.44 ACRE TRACT
 DIVISION**

Completion Date: 7/14/20	File Name: 174AC
Scale: 1"=600'	Surveyed by: LB
Drawn by: AF	Checked by: CB

JOB #: 2006021