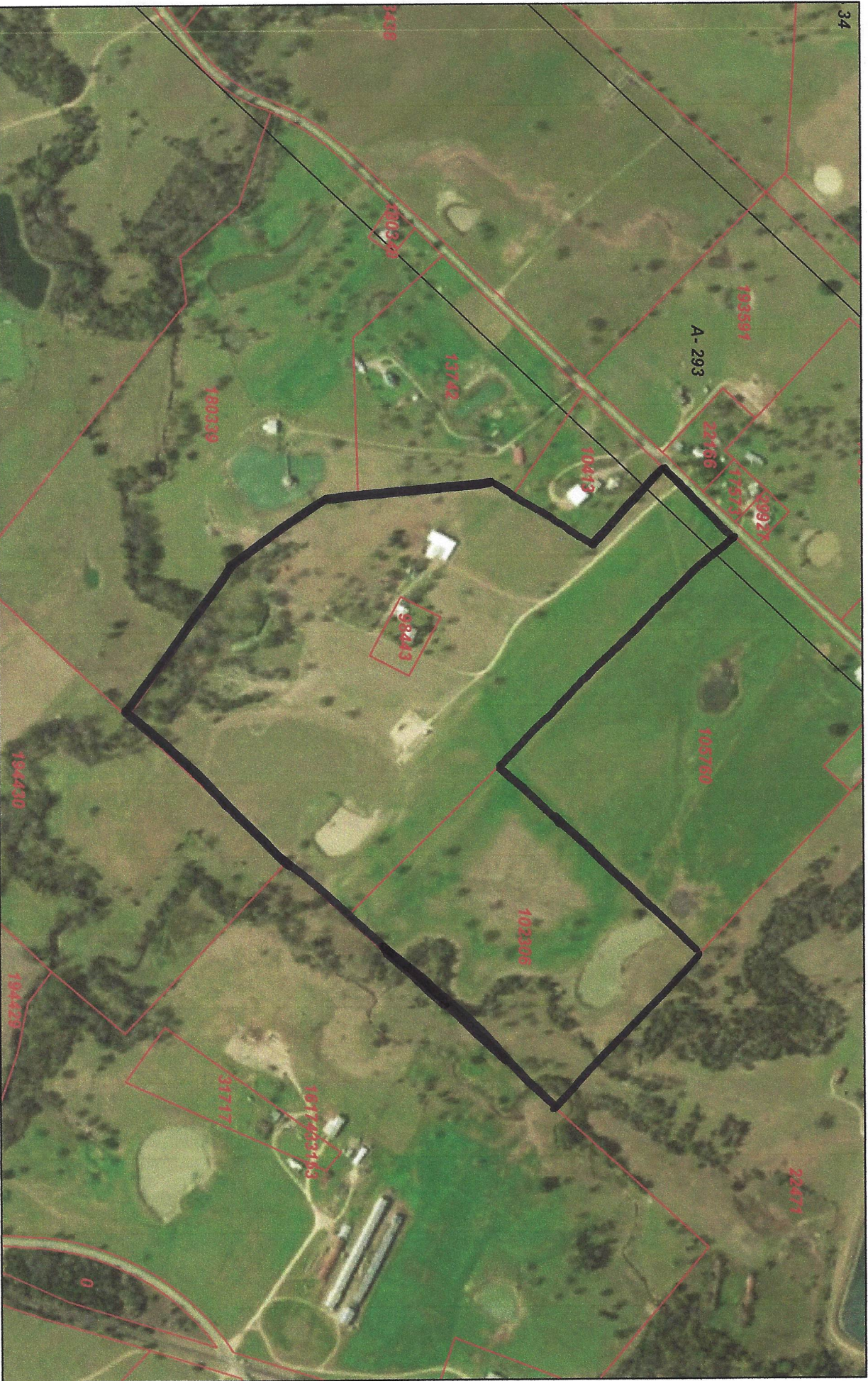


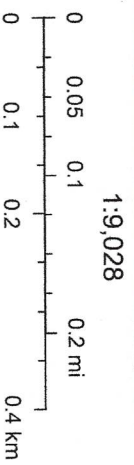


Lee CAD Web Map



9/3/2020, 2:46:00 PM

-  Parcels
-  Abstracts



Source: Esri, Maxar, GeoEye, Earthstar Geographics, CNES/Airbus DS, Lee County Appraisal District, BIS Consulting - www.bisconsulting.com

Disclaimer: This product is for informational purposes only and has not been prepared for or be suitable for legal, engineering, or surveying purposes. It does not represent an on-the-ground survey and represents only the approximate relative location of boundaries.