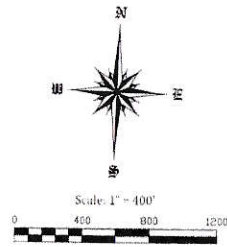


Detail "A"  
Scale: 1" = 100'

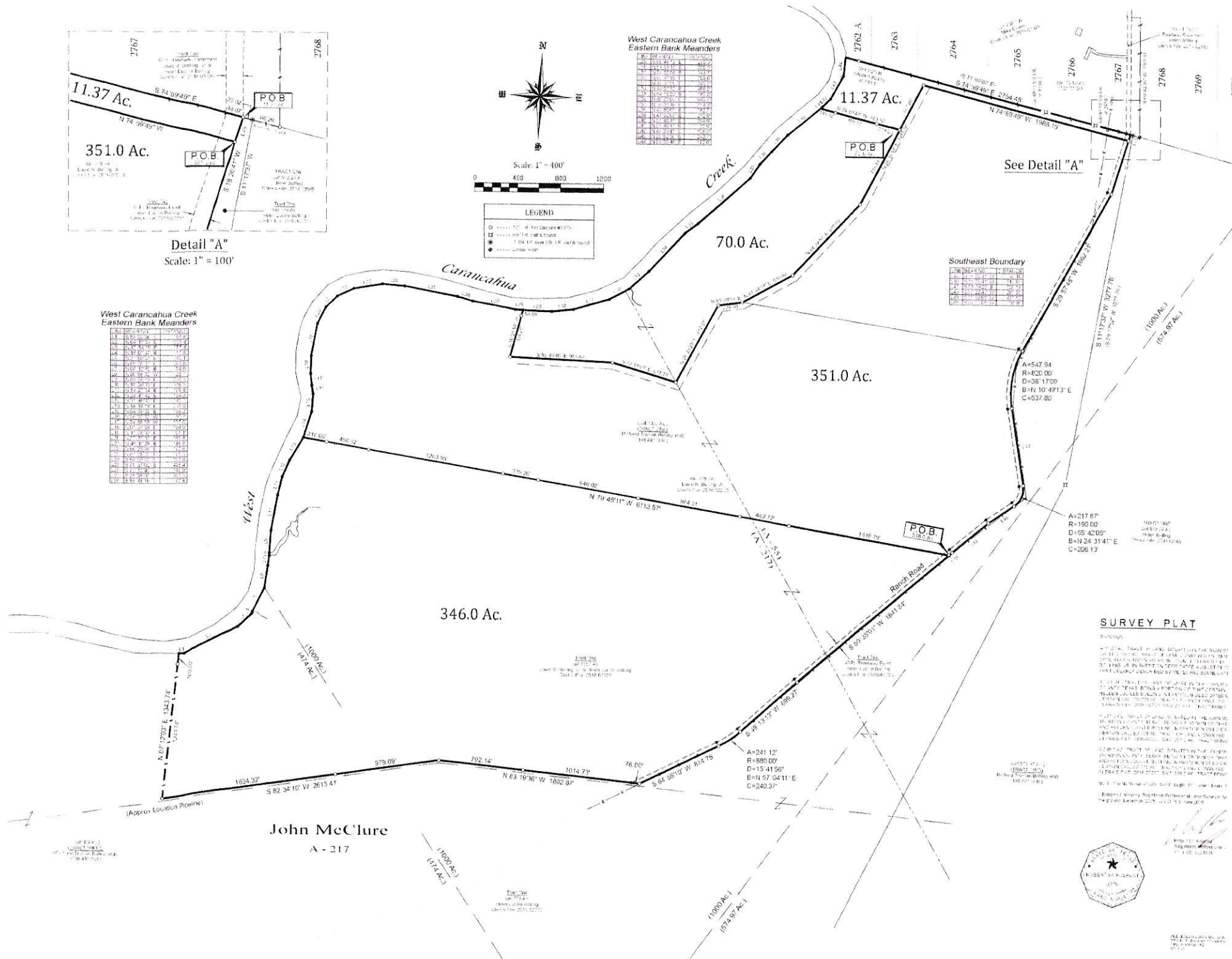


West Carancahua Creek  
Eastern Bank Meanders

| Station | Bearing         | Distance | Station | Bearing         | Distance |
|---------|-----------------|----------|---------|-----------------|----------|
| 1       | N 74° 39' 46" E | 276.45   | 11      | S 74° 39' 46" E | 276.45   |
| 2       | S 74° 39' 46" E | 276.45   | 12      | N 74° 39' 46" W | 276.45   |
| 3       | N 74° 39' 46" W | 276.45   | 13      | S 74° 39' 46" W | 276.45   |
| 4       | S 74° 39' 46" W | 276.45   | 14      | N 74° 39' 46" E | 276.45   |
| 5       | N 74° 39' 46" E | 276.45   | 15      | S 74° 39' 46" E | 276.45   |
| 6       | S 74° 39' 46" E | 276.45   | 16      | N 74° 39' 46" W | 276.45   |
| 7       | N 74° 39' 46" W | 276.45   | 17      | S 74° 39' 46" W | 276.45   |
| 8       | S 74° 39' 46" W | 276.45   | 18      | N 74° 39' 46" E | 276.45   |
| 9       | N 74° 39' 46" E | 276.45   | 19      | S 74° 39' 46" E | 276.45   |
| 10      | S 74° 39' 46" E | 276.45   | 20      | N 74° 39' 46" W | 276.45   |

West Carancahua Creek  
Eastern Bank Meanders

| Station | Bearing         | Distance | Station | Bearing         | Distance |
|---------|-----------------|----------|---------|-----------------|----------|
| 1       | N 74° 39' 46" E | 276.45   | 11      | S 74° 39' 46" E | 276.45   |
| 2       | S 74° 39' 46" E | 276.45   | 12      | N 74° 39' 46" W | 276.45   |
| 3       | N 74° 39' 46" W | 276.45   | 13      | S 74° 39' 46" W | 276.45   |
| 4       | S 74° 39' 46" W | 276.45   | 14      | N 74° 39' 46" E | 276.45   |
| 5       | N 74° 39' 46" E | 276.45   | 15      | S 74° 39' 46" E | 276.45   |
| 6       | S 74° 39' 46" E | 276.45   | 16      | N 74° 39' 46" W | 276.45   |
| 7       | N 74° 39' 46" W | 276.45   | 17      | S 74° 39' 46" W | 276.45   |
| 8       | S 74° 39' 46" W | 276.45   | 18      | N 74° 39' 46" E | 276.45   |
| 9       | N 74° 39' 46" E | 276.45   | 19      | S 74° 39' 46" E | 276.45   |
| 10      | S 74° 39' 46" E | 276.45   | 20      | N 74° 39' 46" W | 276.45   |



Southeast Boundary

| Station | Bearing         | Distance | Station | Bearing         | Distance |
|---------|-----------------|----------|---------|-----------------|----------|
| 1       | N 74° 39' 46" E | 276.45   | 11      | S 74° 39' 46" E | 276.45   |
| 2       | S 74° 39' 46" E | 276.45   | 12      | N 74° 39' 46" W | 276.45   |
| 3       | N 74° 39' 46" W | 276.45   | 13      | S 74° 39' 46" W | 276.45   |
| 4       | S 74° 39' 46" W | 276.45   | 14      | N 74° 39' 46" E | 276.45   |
| 5       | N 74° 39' 46" E | 276.45   | 15      | S 74° 39' 46" E | 276.45   |
| 6       | S 74° 39' 46" E | 276.45   | 16      | N 74° 39' 46" W | 276.45   |
| 7       | N 74° 39' 46" W | 276.45   | 17      | S 74° 39' 46" W | 276.45   |
| 8       | S 74° 39' 46" W | 276.45   | 18      | N 74° 39' 46" E | 276.45   |
| 9       | N 74° 39' 46" E | 276.45   | 19      | S 74° 39' 46" E | 276.45   |
| 10      | S 74° 39' 46" E | 276.45   | 20      | N 74° 39' 46" W | 276.45   |

A=547.94  
R=820.00  
D=38.1709°  
B=N 10° 49' 13" E  
C=437.80

A=217.67  
R=190.00  
D=65.4205°  
B=N 24° 31' 11" E  
C=206.13

**SURVEY PLAT**

ROBERT A. GARCIA  
Surveyor  
No. 1000

THIS SURVEY WAS MADE BY ME OR UNDER MY SUPERVISION AND TO THE BEST OF MY KNOWLEDGE AND BELIEF IT COMES IN ACCORDANCE WITH THE REQUIREMENTS OF THE SURVEYING ACT OF 1967, AS AMENDED.

DATE: 10/15/2010

PROJECT: JOHN McCURE A-217

SECTION: 10

TOWNSHIP: 36 N

RANGE: 10 W

COUNTY: TARRANT

STATE: TEXAS



John McClure  
A - 217

10/15/2010

10/15/2010

10/15/2010