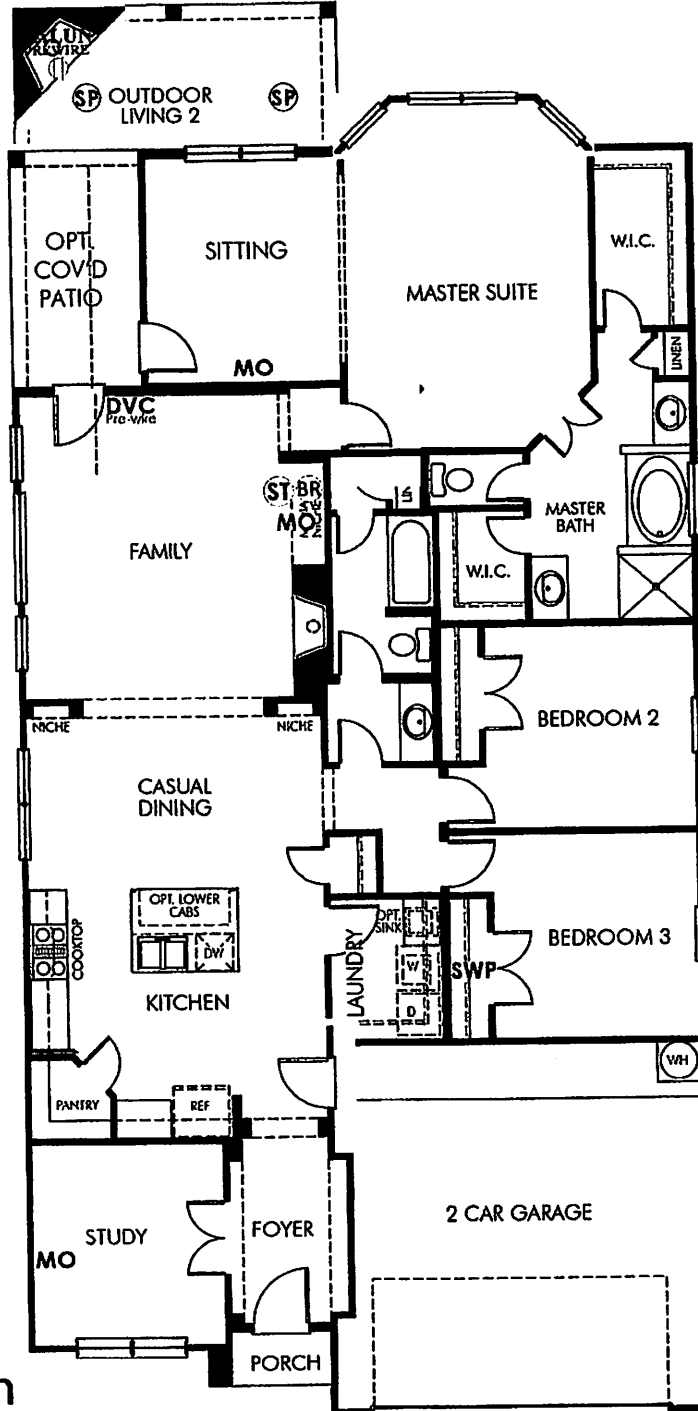


Lot 21 Block 1 Tract 5



JA
2/22/16

2 CAT5 per balun

WILL NEED TO SUPPLY
BALUNS x JA

- TV - TV Location (1 RG6)
- CAT - Phone or DATA (1 CAT5e)
- ENT - Home Entertainment (1 CAT5e/ 2 RG6)
- HO - Home Outlet(2 CAT5e/1 RG6)
- UNV - Universal Outlet (2 CAT5e/2 RG6)
- NO - Network Outlet (3 CAT5e/ 1 RG6)
- SP - Speaker Prewire
- SP - In-Ceiling Speaker
- SW - In-Wall Speaker
- AS - Atmos Speaker Prewire

- SUB - Subwoofer (1 RG6)
- SS - Surround Sound Prewire Homerun
- DVC - Digital Volume Control Prewire Only
- ST - Stereo Speaker Prewire Homerun
- HDMI - HDMI Bundle (2 HDMI/2 CAT5e Trimmed)(Conduit)
- ⊙ - HDMI Bundle Homerun Location
- PROJ - Projector Bundle (2 HDMI/ 2 CAT5e Trimmed)(Conduit)
- SWP - Structured Wiring Panel
- FR - Projector Bundle Homerun
- ⌋ - Electrical Outlet (110 Volt)

- CAM - Camera Location
- nt - Camera NVR Homerun
- Ⓢ - Conduit (installed next to electrical)
- Ⓢ - Conduit Homerun
- Ⓢ - 5 Runs of Cat5e Bundled
- Ⓢ - 5 Runs of Cat5e Homerun
- MD - Motion Detector
- KP - Keypad
- GB - Glass Break Detector
- LZ - Lighting Zone (1 Light switch)
- AP - Home Automation Panel Prewire

- WAP - Wireless Access Point Prewire (1 CAT5e)
- VAC - Central Vac Master Location
- INT - Intercom Station Prewire
- INT - Intercom Master Unit
- as - Rock Speaker
- IR - IR Control
- OH - Overhead Garage Switch
- HH - Hammer Height
- SWP2 - Structured Wiring Panel 2
- DAT - DATA for automation use